

PDF hosted at the Radboud Repository of the Radboud University Nijmegen

The following full text is a publisher's version.

For additional information about this publication click this link.

<https://hdl.handle.net/2066/219390>

Please be advised that this information was generated on 2020-10-23 and may be subject to change.

RESEARCH ARTICLE

Open Access



Preparing for an orthopedic consultation using an eHealth tool: a randomized controlled trial in patients with hip and knee osteoarthritis

Aniek A. O. M. Claassen^{1*} , Henk J. Schers², Vincent J. J. F. Busch³, Petra J. C. Heesterbeek⁴, Frank H. J. van den Hoogen^{1,5}, Thea P. M. Vliet Vlieland⁶ and Cornelia H. M. van den Ende^{1,5}

Abstract

Background: To evaluate the effect of a stand-alone mobile and web-based educational intervention (eHealth tool) compared to usual preparation of a first orthopedic consultation of patients with hip or knee osteoarthritis (OA) on patients' satisfaction.

Methods: A two-armed randomized controlled trial involving 286 patients with (suspicion of) hip or knee OA, randomly allocated to either receiving an educational eHealth tool to prepare their upcoming consultation ($n = 144$) or usual care ($n = 142$). Satisfaction with the consultation on three subscales (range 1–4) of the Consumer Quality Index (CQI - primary outcome) and knowledge (assessed using 22 statements on OA, range 0–22), treatment beliefs (assessed by the Treatment beliefs in OsteoArthritis questionnaire, range 1–5), assessment of patient's involvement in consultation by the surgeon (assessed on a 5-point Likert scale) and patient satisfaction with the outcome of the consultation (numeric rating scale), were assessed.

Results: No differences between groups were observed on the 3 subscales of the CQI (group difference (95% CI): communication 0.009 (–0.10, 0.12), conduct –0.02 (–0.12, 0.07) and information provision 0.02 (–0.18, 0.21)). Between group differences (95% CI) were in favor of the intervention group for knowledge (1.4 (0.6, 2.2)), negative beliefs regarding physical activities (–0.19 (–0.37, –0.002) and pain medication (–0.30 (–0.49, –0.01)). We found no differences on other secondary outcomes.

Conclusions: An educational eHealth tool to prepare a first orthopedic consultation for hip or knee OA does not result in higher patient satisfaction with the consultation, but it does influence cognitions about osteoarthritis.

Trial registration: Dutch Trial Register (trial number [NTR6262](https://www.trialregister.nl/trial/record/NTR6262)). Registered 30 January 2017.

Keywords: Hip and knee osteoarthritis, eHealth, Consultation, Preparation, Education

* Correspondence: a.claassen@maartenskliniek.nl

¹Department of Rheumatology, Sint Maartenskliniek, PO Box 9011, Nijmegen, GM 6500, The Netherlands

Full list of author information is available at the end of the article



© The Author(s). 2020 **Open Access** This article is licensed under a Creative Commons Attribution 4.0 International License, which permits use, sharing, adaptation, distribution and reproduction in any medium or format, as long as you give appropriate credit to the original author(s) and the source, provide a link to the Creative Commons licence, and indicate if changes were made. The images or other third party material in this article are included in the article's Creative Commons licence, unless indicated otherwise in a credit line to the material. If material is not included in the article's Creative Commons licence and your intended use is not permitted by statutory regulation or exceeds the permitted use, you will need to obtain permission directly from the copyright holder. To view a copy of this licence, visit <http://creativecommons.org/licenses/by/4.0/>. The Creative Commons Public Domain Dedication waiver (<http://creativecommons.org/publicdomain/zero/1.0/>) applies to the data made available in this article, unless otherwise stated in a credit line to the data.

Background

Non-surgical treatments like lifestyle education, exercise therapy, weight loss and pain medication are recommended as a primary approach to manage hip or knee osteoarthritis (OA) in an early stage and can be organized in primary care [1, 2]. Once these conservative treatment options have been tried adequately and have failed, or in case of diagnostic uncertainty, referral to an orthopedic surgeon should be considered for further evaluation and consideration of surgical interventions, e.g. a total joint replacement (TJR) [2]. Among medical, economic and healthcare professionals' factors, patient-related factors may influence the choice for a TJR [3]. To actively participate in the consideration of different treatment options, patients need to be informed of benefits and possible disadvantages of available treatment options [4].

Currently, half to two-third of patients referred to an orthopedic surgeon are considered not (yet) eligible for a TJR [5, 6]. This is in contrast with the observation that patients with hip or knee OA who are referred for a first orthopedic consultation often expect action to be taken [7], in particular the planning of a TJR. It is conceivable that expectations for some patients are not met, resulting in patients being dissatisfied [8].

An appropriate preparation of the consultation is likely to streamline the patients' expectations and increase their satisfaction, irrespective of whether the outcome is consideration of surgery or not. This hypothesis is supported by the literature where, in general, patients who are more knowledgeable, skilled and proactive prior to a consultation are more satisfied with received care because it is more likely that needs are met [9]. Interventions aimed at supporting patients to prepare for a consultation were found to improve self-efficacy in older patients [10]. Moreover, educational tools have high satisfaction rates and positive effects on patient knowledge, decision making, self-efficacy and number of questions asked during consultation [11, 12].

An educational eHealth application may be suitable to prepare patients for their consultation because of the easy accessibility and the possibility to provide information that suits individual preferences and needs. Moreover, eHealth interventions have shown to enhance and supplement the communication between patients and healthcare providers and seem effective at providing information, enhancing information exchange, and promoting self-management in older adults [13, 14]. Recently it was concluded that the use of an educational website for patients with hip and knee OA improve important aspects of quality of care (i.e. self-management, lifestyle and physical activity) [15]. However, these results were based on an observational study and to our knowledge good quality randomized controlled trials

evaluating educational eHealth tools with interactive parts are not available.

The aim of the present study was to evaluate the effect of a stand-alone mobile and web-based educational intervention (educational eHealth tool) compared to usual preparation of a first orthopedic consultation of patients with hip or knee OA on satisfaction with the consultation. Secondary outcomes were knowledge, treatment beliefs and measures on the consultation from the patient and surgeon's perspective.

Methods

Design and setting

This study was reported according to the CONSORT guidelines [16]. A two-armed unblinded randomized controlled trial was conducted. The study was performed at the outpatient departments of Orthopaedic surgery of the Sint Maartenskliniek Nijmegen and Boxmeer, the Netherlands from March 2017 to May 2018. The need for ethics approval was waived. The local Medical Research Ethics Committee, region Arnhem-Nijmegen (study no. 2016–3096) provided a waiver, as this type of study does not require approval from an ethics committee in the Netherlands according to the Central Committee on Research involving Human Subjects. The study was registered in the Dutch Trial Register (trial number NTR6262). All participants gave informed consent prior to the baseline data collection.

Participants

Patient with hip or knee OA with a scheduled first-time visit for a new diagnosis at the outpatient department of Orthopaedic surgery of the Sint Maartenskliniek were checked for eligibility. Patients were invited for participation when: 1) 18 years or older; 2) diagnosis or suspicion of OA in the knee or hip in the referral letter; and 3) no previous visit to the outpatient department of Orthopaedic surgery of the Sint Maartenskliniek for a complaint of the index joint. Exclusion criteria were: 1) unable to read and understand the Dutch language; 2) not possessing a smartphone, computer or tablet; or 3) no e-mail address.

Interventions

The **intervention** and **control** group received the usual hospital procedure. Participants received a confirmation letter of their scheduled consultation along with a flyer named "Going prepared to the outpatient department of Orthopaedic surgery". This flyer provides brief information on how to prepare for the consultation in addition to practical information regarding the visit to the hospital.

The **intervention** group also received a login to access the educational eHealth tool no more than two weeks

before their consultation. The educational eHealth tool was developed following an iterative method of persuasive design in collaboration with OA patients [17]. Pilot-testing of the developed tool was done among patients and healthcare professionals. The tool could be consulted using a smartphone, a tablet or computer. The tool contained the following functionalities: (1) information on OA and treatment modalities, based on a stepped-care strategy for OA [18]; (2) preparation for the upcoming consultation consisting of predefined questions to answer, and space to record questions the patient would like to ask the orthopedic surgeon; (3) the option to monitor pain and fatigue during 1 week prior to the consultation; (4) list medication use with the option to set reminders for intake; and (5) the option to create a visual timeline with the scheduled consultation, assessments and preparation. Further specifications and the developmental process of the tool are described elsewhere [19].

Procedures

Eligible patients received an information letter to participate. Patients were invited based on the referral letter of the general practitioner or referring specialist, which was screened by a research assistant on confirmed diagnosis or suspicion of knee or hip OA. Patients willing to participate were asked to contact the involved researcher. After registering for the study, participants received information about the study by e-mail, along with a hyperlink to an online consent form and questionnaire for baseline assessment (T0). Once the questionnaire was completed, participants were allocated to the intervention or control group (concealed allocation ratio 1:1, stratified by main OA-location hip or knee, using randomly varied block sizes (4 to 8)). Randomization was performed using an electronic data capture and management program; Castor EDC (www.castoredc.com). Participants were informed of the allocation through email, intervention group participants also received access to the educational eHealth tool. One day after the consultation all participants received the second questionnaire (T1) through email. Non-responding participants received a reminder after 1 week. The timeline for participants is illustrated in Fig. 1. Participants who did not attend the consultation were excluded. Diagnosis of all

participants was checked in the patient information system post-consultation. Directly following the consultation the orthopedic surgeon rated the degree of involvement of the patient. All data were collected or processed in Castor EDC.

Measurements and outcomes

Data on demographic (gender, age, BMI, level of education, work status) and clinical (OA index joint, number of painful joints, duration of symptoms, pain and function) characteristics were collected at baseline (T0), 2–5 weeks prior to the consultation. To assess pain and function the Western Ontario and McMaster Universities Osteoarthritis Index (WOMAC) was used [20], with standardized scores being presented (0–100, higher scores indicating more pain and worse function). Primary and secondary outcome measures were collected during the week after the consultation (T1).

Primary outcome measure

The primary outcome was satisfaction with the consultation measured with an adapted version of the Consumer Quality Index (CQI), the Dutch standard for measuring patient experience with health care providers and health plans [21]. Because the CQI is available for several curative services, but not specifically for OA or a visit to an orthopedic surgeon, we adapted three subscales of the CQI, 1) The subscale “physician-patient communication” from the ‘CQI-general practitioner care’ with the addition of 2 items from the ‘CQI-outpatient clinic’. 2) the subscale “conduct physician” from the ‘CQI-Rheumatoid Arthritis’ supplemented with two items from the ‘CQI-general practitioner care’ and 3) the subscale “Information provision by the physician” from CQI-outpatient clinic’. The three subscales are independently validated for the three mentioned CQI-indices [22–24]. For each subscale an indicator score can be calculated ranging from 1 to 4 (higher score indication higher satisfaction with care).

Secondary outcome measures

To evaluate the consultation several self-administered questions were used. *Treatment strategy after the consultation* was asked by means of the question: “What did you and the doctor agreed on to do next?” (the doctor

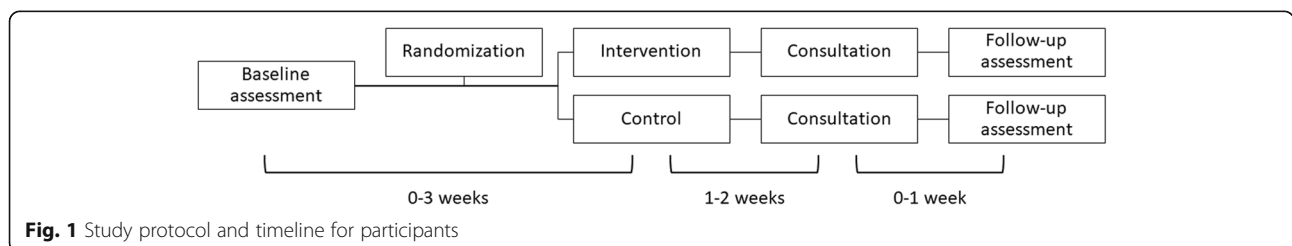


Fig. 1 Study protocol and timeline for participants

referred me to another healthcare professional, namely ... / I'm getting surgery / the doctor described pain medication / I don't know / We did not agree on a next step / wait and see / other, namely...). Referrals to other healthcare professionals (e.g. physiotherapists or dieticians) as well as answers in the "other"-category that comprised recommendations on physical exercise or dieting were categorized as "conservative treatment strategy". *Satisfaction* with the consultation and the policy after the consultation could be scored on a Numeric Rating Scale (NRS) (0–10).

Based on frequently asked questions on OA in a previous study [25], 22 statements were self-administered to assess *knowledge* of participants on OA (treatment) at baseline (T0) and follow-up (T1). Total score ranged from 0 to 22, with higher scores indicating more knowledge. To assess patients' thoughts and expectations regarding treatment options (physical activities, pain medication and joint replacement surgery) the Treatment beliefs in OsteoArthritis questionnaire (TOA) was used [26]. Positive and negative *treatment beliefs* were measured at baseline (T0) and follow-up (T1). To facilitate interpretation mean subscale scores were divided by the number of items per scale, resulting in a standardized score ranging from 1 to 5 (1 = less positive, 5 = more positive [positive subscales] and 1 = less negative, 5 = more negative [negative subscales]). The TOA shows good internal consistency and reliability [26].

Orthopedic surgeons were asked to score two statements about the consultation on a 5-point Likert scale (1 "completely disagree" – 5 "completely agree"): 1) "the patient showed to be well prepared for the consultation" and 2) "The patient had an active role in the consultation".

For the purpose of a usability study on the educational eHealth tool, participants in the intervention group were asked to fill in several additional questions in the follow-up measure [19].

Statistical analysis

Based on previous research [27] and collected unpublished data on the CQI in the Sint Maartenskliniek an a-priori sample size estimate indicated that 286 participants (143 per group) would provide 80% power at 5% level of significance (two-sided) to detect a treatment difference of at least 0.15 points on the CQI subscales between the two groups assuming a SD of 0.45. Accounting for 25% loss of follow up we aimed to include 382 patients.

Data were analyzed using Stata 13.1. Primary analysis were done according to the intention-to-treat (ITT) principle. Secondary analyses included per-protocol analysis excluding protocol violators (i.e.

patients who did not open the educational eHealth tool, based on log-file analysis). Additionally, we analyzed differences in satisfaction between patients of whom the outcome of the consultation was surgery and patients with a different outcome of the consultation.

Post-intervention differences between groups were analyzed using linear regression analyses, Chi-squared test and Mann-Whitney U test where appropriate. Data on knowledge and treatment beliefs were analyzed with linear regression analyses, using follow-up scores as dependent variable and group (intervention/control) and baseline value as covariate. All linear regression analyses were corrected for outcome of consultation (surgery or not). Differences between groups and 95% CI were reported.

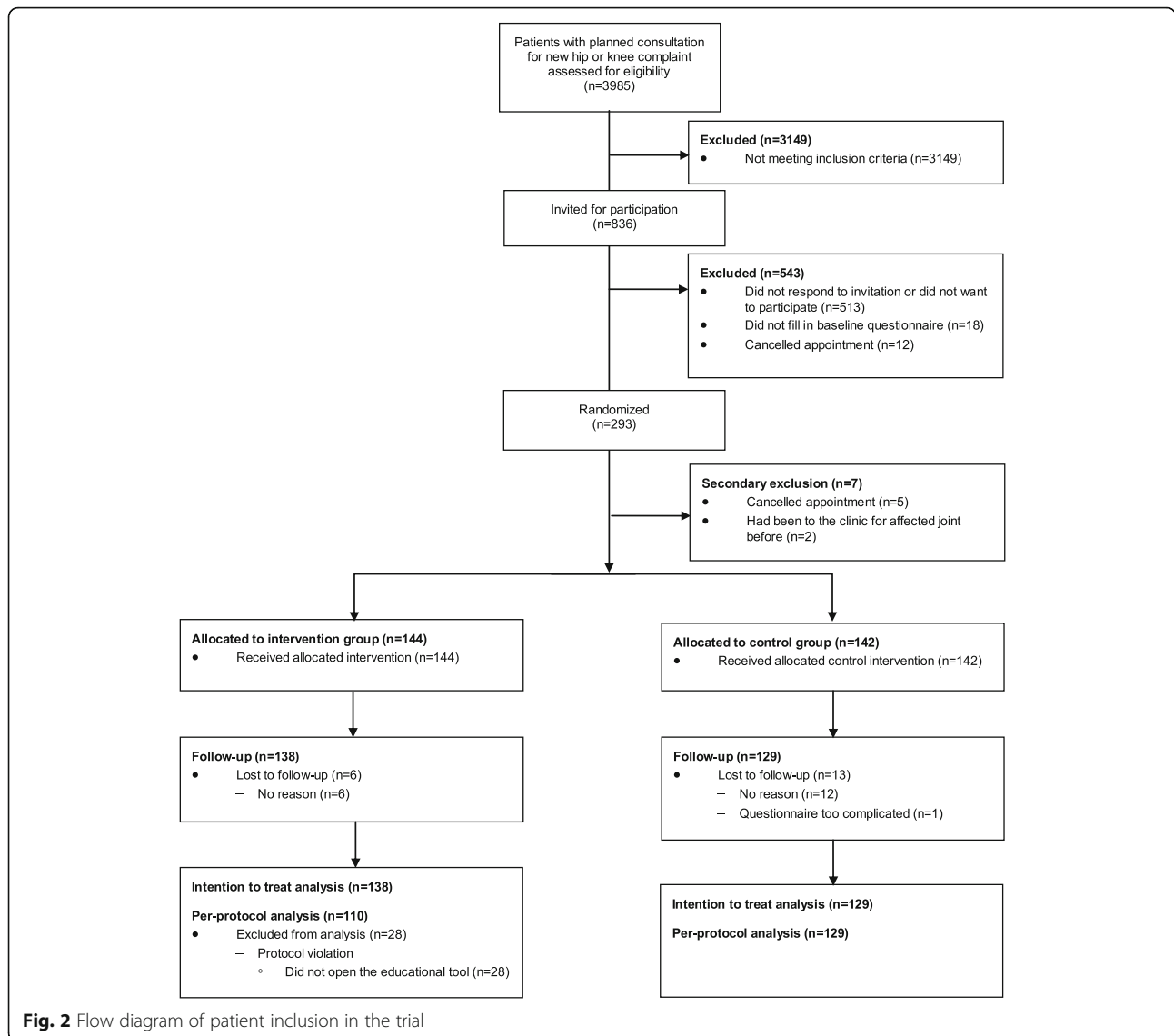
Results

Between March 2017 and March 2018, 836 individuals were invited to participate. A total of 293 (35%) participants filled in the first questionnaire and were randomized. No differences were found between the invited patients who did not participate and the study population with regard to age (P -value = 0.08) and sex (P -value = 0.61). Due to time constraints inclusion was stopped after 293 out of the targeted 382 patients were enrolled. Data of 7 (2%) participants was excluded because they did not fulfil the inclusion criteria; 5 participants cancelled their appointment and 2 participants were wrongly included as it turned out they already had been to the clinic before for OA complaints in the same joint. Two hundred eighty-six participants were allocated to either the intervention ($n = 144$) or control ($n = 142$) group. Nineteen (7%) participants were lost to follow-up leaving data of 267 participants for the ITT analysis. Twenty-eight participants in the intervention group did not open the application and were considered protocol-violators and excluded in the per-protocol analysis (Fig. 2).

Baseline characteristics of the study population are shown in Table 1. The majority of patients was female (58%), around 80% of patients had a consultation with regard to complaints on the knee and more than half experienced their first symptoms in the previous 5 years.

Primary outcome

No relevant or significant differences between the intervention and control group were found on consultation satisfaction, as measured with all three subscales (communication, conduct and information provision) of the CQI (Table 2).



Secondary outcomes

About one-fourth of the patients were put up for joint replacement surgery (Table 3). Twenty-two percent of patients in the intervention group and 29% in the control group were referred to or received a conservative treatment option (physiotherapy, dietary therapy, pain medication, brace, etc.). In another one-third it was decided to abide further symptom development.

Knowledge significantly improved in the intervention group compared to the control group (mean group difference (95% CI): 1.4 (0.6, 2.2)) (Table 4). Also, significant differences were found in negative beliefs regarding physical activities and pain medication between intervention and control group, with the intervention group having less negative beliefs (mean group difference (95% CI): -0.19 (-0.37, -0.002) and -0.30 (-0.49, -0.12)

respectively). No other differences were found in any of the secondary outcome measures.

Secondary analysis

The per-protocol analysis was performed excluding 28 patients from the intervention group, all whom did not open the application. Experience with the consultation in the intervention group was found not to be significantly different than in the control group on all three CQI subscales. Only small differences were found on secondary outcomes compared to the ITT-analysis. The decrease of negative beliefs regarding physical activities in favor of the intervention group was not found statistically significant any longer (mean group difference (95% CI): -0.17 (-0.36, 0.03)) and positive beliefs about total joint replacement surgery decreased in those who had used the

Table 1 Baseline characteristics of participants allocated to the intervention and control group

	Intervention group (n = 144)	Control group (n = 142)
<i>Social-demographic characteristics</i>		
Female; n (%)	81 (57)	85 (60.7)
Age, years; mean (S.D.)	61.7 (10.4)	63.3 (10.1)
BMI, kg/m ² ; mean (S.D.)	27.9 (4.4)	29.0 (5.1)
< 12 years education; n (%)	57 (40)	56 (39.7)
Paid work; n (%)	58 (43)	47 (35.6)
<i>Clinical characteristics</i>		
Index joint knee; n (%)	115 (80)	112 (78.9)
Number of painful joints (0–10); median (IQR)	2 (1–3.5)	2 (1–4)
Duration of symptoms; n (%)		
< 1 year	14 (10)	19 (14)
1–5 years	69 (49)	64 (46)
5–10 years	20 (14)	22 (15)
> 10 years	39 (27)	35 (25)
Pain, WOMAC (0–100); mean (S.D.)	50.9 (19.8)	47.6 (19.1)
Function, WOMAC (0–100); mean (S.D.)	55.0 (21.1)	48.5 (20.5)

intervention, compared to the control group (mean group difference (95% CI: - 0.12 (- 0.24, 0.001)).

Secondary analysis on satisfaction outcomes between patients scheduled for surgery versus those with a different treatment strategy revealed that patients scheduled for surgery were more satisfied as measured with the CQI subscales ‘Conduct’ and ‘Information provision’ (mean group difference (95% CI): 0.18 (- 0.29, - 0.07) and - 0.32 (- 0.53, - 0.11), respectively). Also, satisfaction with the treatment strategy and the consultation as measured on NRS (0–10) was significantly higher in patients scheduled for surgery (mean group difference (95% CI): - 1.1 (- 1.8, - 0.3) and - 1.1 (- 1.8, - 0.5) respectively).

Discussion

The results of this study show that preparing a first orthopedics consultation for hip or knee OA using an educational eHealth tool does not result in higher satisfaction of the consultation. Participants using the eHealth tool did have more knowledge and less negative beliefs about physical activities and pain medication as

compared to usual care. No other significant differences between intervention and control group were found regarding treatment strategy (surgery versus other strategies), or treatment beliefs about TJR. Neither were there differences between groups regarding the evaluation by the orthopedic surgeon on preparation and active participation of the consultation.

We hypothesized that patients are more satisfied with their consultation regardless of the chosen treatment when they are well prepared using an educational eHealth tool. The results do not confirm our hypothesis, but are in line with a recently published RCT demonstrating no improvement in the appreciation of the first orthopedic consultation, after the use of an educational smartphone app [28]. However, secondary analysis showed that patients with a TJR planned as result of the consultation were significantly more satisfied than patients who had a different outcome, irrespective of the use of the tool. This confirms findings from previous qualitative studies that patients want action to be taken [6] and prefer TJR as treatment [29]. Previous research shows that expectations of TJR are often high and not

Table 2 Follow-up indicator scores and differences between groups on the subscales of the Consumer Quality Index

	Intervention group		Control group		Group difference Δ (95% CI) ^a
	n	Mean (S.D.)	n	Mean (S.D.)	
Communication, CQI ^b (1–4)	129	3.69 (0.47)	118	3.66 (0.45)	0.009 (- 0.10, 0.12)
Conduct, CQI ^b (1–4)	133	3.78 (0.40)	124	3.76 (0.41)	- 0.02 (- 0.12, 0.07)
Information provision, CQI ^b (1–4)	80	3.59 (0.69)	90	3.58 (0.65)	0.02 (- 0.18, 0.21)

^a Adjusted for treatment strategy (surgery or not). ^b Adapted version. CQI: Consumer Quality Index

Table 3 Differences on secondary outcomes of the consultation for the intervention group and control group

	Intervention group n = 138	Control group n = 129	P-value
<i>Patients' outcomes</i>			
Able to ask what I wanted; n (%)	121 (88)	104 (81)	0.12 ^a
Number of questions asked, median (IQR)	2 (1–3)	2 (1–3)	0.31 ^b
Treatment strategy after consultation, n (%)			0.47 ^a
Conservative	30 (22)	37 (29)	
Surgery	37 (27)	34 (26)	
Wait and see	46 (33)	34 (26)	
Other diagnosis	16 (12)	17 (13)	
Satisfaction with policy (0–10), mean (S.D.)	7.5 (2.7)	7.9 (2.2)	−0.4 (−1.1, 0.2) ^c
Satisfaction with consultation (0–10), mean (S.D.)	8.0 (2.3)	8.3 (2.0)	−0.2 (−0.8, 0.4) ^c
<i>Surgeons' outcomes</i>			
Preparedness of patient (1–5), median (IQR)	5 (4–5)	4 (4–5)	0.51 ^b
Participation of patient (1–5), median (IQR)	5 (4–5)	5 (4–5)	0.82 ^b

^a Chi-squared test. ^b Mann-Whitney U test. ^c Linear regression analysis, adjusted for treatment strategy (surgery or not), mean difference (95% CI)

always realistic [30, 31], but are a key determinant of treatment satisfaction after TJR [32–34]. Also, patients' beliefs about conservative and surgical treatments options are an important aspect in the choice for a treatment [3, 35]. Our results are in line with recent findings showing that educational tools used either during or in preparation for the consultation improve knowledge and risk perception [28, 36]. However, effects of improvement in knowledge and risk perception on fulfilment of expectations and ultimately satisfaction still has to be investigated [37].

The lack of positive effects of the tool on satisfaction may have several explanations. First, it may indicate that our intervention was not comprehensive enough to sufficiently change patients' expectations towards other treatment options in order to improve their satisfaction. Although fulfilment of expectations is an important aspect of satisfaction [8, 33], healthcare professional

related aspects like trust, empathy, communication and relatedness, contact time and waiting time are important for satisfaction with the consultation as well [8]. These aspects were not specifically targeted in our intervention. Second, in hindsight our choice for using the CQI as outcome measure may be questioned for several reasons. Because of missing values we could not calculate indicator scores for all participants. Moreover, it should be noted that satisfaction was high in all patients. Scores found in our study were even higher than previously reported CQI scores in orthopedics setting (3.3 (hospital stay) and 3.5 (information at discharge)) [27]. Moreover, > 15% of participants scored the highest possible CQI scores indicating a ceiling effect on our primary outcome [38]. The primary focus of the eHealth tool was to target patient expectations. Fulfilment of expectations was not reflected in the CQI and as such not measured. A validated sensitive questionnaire to assess satisfaction

Table 4 Differences in knowledge and treatment beliefs for the intervention group and control group

	Intervention group		Control group		Group difference (95% CI) ^a
	Baseline mean (S.D.)	Follow-up mean (S.D.)	Baseline mean (S.D.)	Follow-up mean (S.D.)	
Knowledge (0–22)	11.2 (3.7)	12.9 (4.1)	11.2 (3.7)	11.6 (4.3)	1.4 (0.6, 2.2)*
Treatment beliefs, TOA (1–5)					
Positive – PA	3.63 (0.84)	3.88 (0.79)	3.46 (0.85)	3.77 (0.83)	0.004 (−0.16, 0.17)
Negative – PA	2.78 (1.00)	2.55 (0.92)	2.94 (0.98)	2.78 (0.91)	−0.19 (−0.37, −0.002)*
Positive – PM	3.35 (0.99)	3.63 (1.03)	3.24 (1.03)	3.58 (0.92)	−0.01 (−0.16, 0.18)
Negative – PM	3.59 (0.81)	3.22 (0.82)	3.71 (0.74)	3.59 (0.66)	−0.30 (−0.49, −0.12)*
Positive – TJR	3.98 (0.70)	3.94 (0.68)	4.06 (0.65)	4.10 (0.63)	−0.10 (−0.21, 0.01)
Negative – TJR	3.75 (0.79)	3.90 (0.73)	3.66 (0.84)	3.94 (0.73)	−0.08 (−0.23, 0.06)

^a adjusted for baseline score of outcome (i.e. knowledge, TOA) and treatment strategy (surgery or not). *Significant for P < 0.05. TOA: Treatment Beliefs in Osteoarthritis questionnaire; PA: physical activities; PM: pain medication; TJR: joint replacement surgery

incorporating fulfilment of patient expectations about the consultations and its outcomes is needed, but currently unavailable.

Based on the positive effects on knowledge and beliefs found in this study, further implementation of the educational eHealth tool may be valuable for clinical practice. More guidance on the use of our educational eHealth tool and instruction for the orthopedic surgeon to discuss preparing the consultation may result in better outcomes [39] and should be a focus of further implementation. However, an advantage of eHealth interventions is that they can be used irrespective of time and place, without involvement of a healthcare professional. If the ultimate aim is to routinely use the educational eHealth tool, costs and benefits with regard to what is effective and what is practical should be weighted and further studied. Additionally, our intervention is already suited for preparation for consultation with other healthcare professionals (e.g. physiotherapist or general practitioner). It may therefore also be implemented in primary care, where it is likely that beliefs and expectations regarding treatment strategy are initially formed and where use of the tool can contribute to providing consistent education throughout the treatment process for OA patients.

There are several limitations of this study that need to be addressed. First, we included fewer patients than intended which impacted statistical power. The number of patients visiting our clinic with (suspicion) of OA was lower than expected which resulted in a slower inclusion rate. Due to time constraints inclusion was closed after 293 out of 382 intended patients were enrolled. Although loss to follow-up rates were lower than expected (7 and 25%, respectively), the final number of participants of whom data could be analyzed was slightly lower ($n = 267$ instead of $n = 286$) than aimed for based on sample size calculation. Considering the small differences found, it is not likely that we failed to detect an effect that was present (Type II error). Second, because the entire study was web-based we created bias against eHealth illiterate participants and may have excluded a relevant group of patients [40]. We did not systematically examine reasons for not participating because of practical reasons. Although gender and age of responders did not differ significantly from non-responders, further research into factors associated with participating in eHealth studies and use of the educational eHealth tool could provide starting points for improvement of the application [10, 39]. Last, we did not ask participants to discuss the tool with the specialist, but we cannot rule out that participants brought up the intervention during their consultations. Therefore, the orthopedic surgeons were not blinded in this trial, which

might have changed the specialists' behavior, outshining the effect of the educational eHealth tool.

Conclusions

In this randomized controlled trial we demonstrated that an educational eHealth tool did not result in higher satisfaction with a first consultation in orthopedics outpatient clinic setting for patients with possible hip or knee OA. The eHealth tool did have small effects on knowledge and treatment beliefs. Future research is needed to evaluate if improving the educational eHealth tool and optimizing implementation in different care settings result in better outcomes.

Abbreviations

OA: Osteoarthritis; TJR: Total joint replacement; BMI: Body mass index; WOMAC: Western Ontario and McMaster Universities Osteoarthritis Index; CQI: Consumer Quality Index; TOA: Treatment beliefs in OsteoArthritis questionnaire; CI: Confidence interval; IQR: Inter quartile range; SD: Standard deviation; PA: Physical activity; PM: Pain medication

Acknowledgements

The authors would like to thank research assistants Nadia Koster and Anje Post for their efforts in patient recruitment and data collection, and Jolanda Rubrech-van As for data management. The authors would also like to thank all patients and healthcare professionals who participated in the different stages of the development of the intervention.

Authors' contributions

AAOMC, HJS, WJJFB, PJCH, FHJH, TPMVW and CHME together decided upon the design of the study. AAOMC, CHME and WJJFB participated in the development of the intervention. AAOMC carried out the data collection, with assistance of three colleagues who are mentioned in the Acknowledgements section. AAOMC and CHME analysed the data and results were discussed by AAOMC, HJS, WJJFB, PJCH, FHJH, TPMVW and CHME. AAOMC and CHME were responsible for drafting the article, which was then revised for intellection content and structure by HJS, WJJFB, PJCH, FHJH and TPMVW. All authors approved the final version of the manuscript.

Funding

The Stichting Landelijk Katholiek Reumacentrum, Netherlands funded this research. The funder of the study had no role in study design, data collection, data analysis, data interpretation, or writing of the report. The corresponding author had full access to all the data in the study and had final responsibility for the decision to submit for publication.

Availability of data and materials

The dataset analyzed during the current study is available on the DANS repository (<https://doi.org/10.17026/dans-xjy-cuyw>). In order to access the research data, researchers can register and login to the repository and put in a request to the authors. This article was written as part of a doctoral dissertation which can be found at <https://repository.ubn.ru.nl/handle/2066/206304> [41].

Ethics approval and consent to participate

This study was performed in accordance with the Declaration of Helsinki. The need for ethics approval was waived. The local Medical Research Ethics Committee, region Arnhem-Nijmegen (study no. 2016–3096) provided an exemption, as this type of study does not require approval from an ethics committee in the Netherlands according to the Central Committee on Research involving Human Subjects. All participants gave their informed consent to participate in the present study by ticking several boxes on an online form confirming that they read the provided information and that their data could be used for the research purposes. The ethics committee approved this procedure.

Consent for publication

Not applicable.

Competing interests

The authors declare that they have no competing interests.

Author details

¹Department of Rheumatology, Sint Maartenskliniek, PO Box 9011, Nijmegen, GM 6500, The Netherlands. ²Department of Primary and Community Care, Radboud University Medical Center, Nijmegen, The Netherlands. ³Department of Orthopaedic Surgery, Sint Maartenskliniek, Nijmegen, The Netherlands. ⁴Sint Maartenskliniek Research, Sint Maartenskliniek, Nijmegen, The Netherlands. ⁵Department of Rheumatology, Radboud University Medical Center, Nijmegen, The Netherlands. ⁶Department of Orthopaedics, Rehabilitation and Physical Therapy, Leiden University Medical Center, Leiden, The Netherlands.

Received: 7 January 2020 Accepted: 7 May 2020

Published online: 15 May 2020

References

1. Fernandes L, Hagen KB, Bijlsma JW, Andreaassen O, Christensen P, Conaghan PG, et al. EULAR recommendations for the non-pharmacological core management of hip and knee osteoarthritis. *Ann Rheum Dis.* 2013;72(7):1125–35.
2. Bennell KL, Hunter DJ, Hinman RS. Management of osteoarthritis of the knee. *BMJ.* 2012;345:e4934.
3. Selten EMH, Geenen R, Schers HJ, van den Hoogen FHJ, van der Meulen-Dilling RG, van der Laan WH, et al. Treatment beliefs underlying intended treatment choices in knee and hip osteoarthritis. *Int J Behav Med.* 2018;25(2):198–206.
4. du LJ HM, Vuijk D, Rakic A, Haverkamp D. Facing the decision about the treatment of hip or knee osteoarthritis: what are patients' needs? *Knee Surg Sports Traumatol Arthrosc.* 2016;24(5):1710–6.
5. Barten DJ, Smink A, Swinkels IC, Veenhof C, Schers HJ, Vliet Vlieland TP, et al. Factors associated with referral to secondary Care in Patients with Osteoarthritis of the hip or knee after implementation of a stepped-care strategy. *Arthritis Care Res (Hoboken).* 2017;69(2):216–25.
6. McHugh GA, Campbell M, Luker KA. GP referral of patients with osteoarthritis for consideration of total joint replacement: a longitudinal study. *Br J Gen Pract.* 2011;61(589):e459–68.
7. Samsson KS, Bernhardsson S, Larsson ME. "Take me seriously and do something!" - a qualitative study exploring patients' perceptions and expectations of an upcoming orthopaedic consultation. *BMC Musculoskelet Disord.* 2017;18(1):367.
8. Waters S, Edmondston SJ, Yates PJ, Gucciardi DF. Identification of factors influencing patient satisfaction with orthopaedic outpatient clinic consultation: a qualitative study. *Man Ther.* 2016;25:48–55.
9. Greene J, Hibbard JH, Sacks R, Overton V. When seeing the same physician, highly activated patients have better care experiences than less activated patients. *Health Aff (Millwood).* 2013;32(7):1299–305.
10. Wetzels R, Harmsen M, Van WC, Grol R, Wensing M. Interventions for improving older patients' involvement in primary care episodes. *Cochrane Database Syst Rev.* 2007;1:CD004273.
11. Belkora J, Volz S, Loth M, Teng A, Zarin-Pass M, Moore D, et al. Coaching patients in the use of decision and communication aids: RE-AIM evaluation of a patient support program. *BMC Health Serv Res.* 2015;15:209.
12. Shue J, Karia RJ, Cardone D, Samuels J, Shah M, Slover JD. A randomized controlled trial of two distinct shared decision-making aids for hip and knee osteoarthritis in an ethnically diverse patient population. *Value Health.* 2016;19(4):487–93.
13. Demiris G, Afrin LB, Speedie S, Courtney KL, Sondhi M, Vimarlund V, et al. Patient-centered applications: use of information technology to promote disease management and wellness. A white paper by the AMIA knowledge in motion working group. *J Am Med Inform Assoc.* 2008;15(1):8–13.
14. Bolle S, van Weert JC, Daams JG, Loos EF, de Haes HC, Smets EM. Online health information tool effectiveness for older patients: a systematic review of the literature. *J Health Commun.* 2015;20(9):1067–83.
15. Umapathy H, Bennell K, Dickson C, Dobson F, Fransen M, Jones G, et al. The web-based osteoarthritis management resource my joint pain improves

- quality of care: a quasi-experimental study. *J Med Internet Res.* 2015;17(7):e167.
16. Schulz KF, Altman DG, Moher D. CONSORT Group. CONSORT 2010 Statement: updated guidelines for reporting parallel group randomised trials. *Trials.* 2010;11:32.
17. Kelders SM, Kok RN, Ossebaard HC, Van Gemert-Pijnen JE. Persuasive system design does matter: a systematic review of adherence to web-based interventions. *J Med Internet Res.* 2012;14(6):e152.
18. Smink AJ, van den Ende CH, Vliet Vlieland TP, Swierstra BA, Kortland JH, Bijlsma JW, et al. "Beating osteoARthritis": development of a stepped care strategy to optimize utilization and timing of non-surgical treatment modalities for patients with hip or knee osteoarthritis. *Clin Rheumatol.* 2011;30(12):1623–9.
19. Claassen AAOM, Vliet Vlieland TPM, Busch VJF, Schers HJ, van den Hoogen FHJ, van den Ende CHM. An electronic health tool to prepare for the first orthopedic consultation: use and usability study. *JMIR Form Res.* 2019;3(4):e13577.
20. Roorda LD, Jones CA, Waltz M, Lankhorst GJ, Bouter LM, van der Eijken JW, et al. Satisfactory cross cultural equivalence of the Dutch WOMAC in patients with hip osteoarthritis waiting for arthroplasty. *Ann Rheum Dis.* 2004;63(1):36–42.
21. Delnoij DM, Rademakers JJ, Groenewegen PP. The Dutch consumer quality index: an example of stakeholder involvement in indicator development. *BMC Health Serv Res.* 2010;10:88.
22. Zuidgeest M, Sixma H, Rademakers J. Measuring patients' experiences with rheumatic care: the consumer quality index rheumatoid arthritis. *Rheumatol Int.* 2009;30(2):159–67.
23. Linschoten CP, Barf HA, Moorer P, Spoorenberg S. CQ-index Poliklinische Ziekenhuiszorg: meetinstrumentontwikkeling. ARGO Rijksuniversiteit Groningen BV; 2011.
24. Meuwissen LE, de Bakker DH. 'Consumer quality'-index 'General practice care' measures patients' experiences and compares general practices with each other. *Ned Tijdschr Geneesk.* 2009;153:A180.
25. Claassen AAOM, Kremers-van de Hei K, van den FHJ H, van der Laan WH, WHC R, Koeter S, et al. The most important frequently asked questions of patients with hip or knee osteoarthritis: a best-worst scaling exercise. *Arthritis Care Res (Hoboken).* 2018.
26. Selten EMH, Vriezekolk JE, Schers HJ, Nijhof MW, van der Laan WH, van der Meulen-Dilling RG, et al. Development of the "treatment beliefs in knee and hip OsteoArthritis (TOA)" questionnaire. *BMC Musculoskelet Disord.* 2017;18(1):402.
27. Krol MW, De BD, Sixma H, van der Hoek L, Rademakers JJ, Delnoij DM. Patient experiegerances of inpatient hospital care: a department matter and a hospital matter. *Int J Qual Health Care.* 2015;27(1):17–25.
28. Timmers T, Janssen L, Pronk Y, van der Zwaard BC, Koeter S, van OD, et al. Assessing the Efficacy of an Educational Smartphone or Tablet App With Subdivided and Interactive Content to Increase Patients' Medical Knowledge: Randomized Controlled Trial. *JMIR Mhealth Uhealth.* 2018;6(12):e10742.
29. Smith TO, Purdy R, Lister S, Salter C, Fleetcroft R, Conaghan PG. Attitudes of people with osteoarthritis towards their conservative management: a systematic review and meta-ethnography. *Rheumatol Int.* 2014;34(3):299–313.
30. Mannion AF, Kampfen S, Munzinger U, Kramers-de QI. The role of patient expectations in predicting outcome after total knee arthroplasty. *Arthritis Res Ther.* 2009;11(5):R139.
31. Niilsdotter AK, Toksvig-Larsen S, Roos EM. Knee arthroplasty: are patients' expectations fulfilled? A prospective study of pain and function in 102 patients with 5-year follow-up. *Acta Orthop.* 2009;80(1):55–61.
32. Hamilton DF, Lane JV, Gaston P, Patton JT, Macdonald D, Simpson AH, et al. What determines patient satisfaction with surgery? A prospective cohort study of 4709 patients following total joint replacement. *BMJ Open.* 2013;3(4).
33. Noble PC, Conditt MA, Cook KF, Mathis KB. The John Insall award: patient expectations affect satisfaction with total knee arthroplasty. *Clin Orthop Relat Res.* 2006;452:35–43.
34. Dunbar MJ, Richardson G, Robertsson O. I can't get no satisfaction after my total knee replacement: rhymes and reasons. *Bone Joint J.* 2013;95-B(11 Suppl A):148–52.
35. Frankel L, Sanmartin C, Conner-Spady B, Marshall DA, Freeman-Collins L, Wall A, et al. Osteoarthritis patients' perceptions of "appropriateness" for total joint replacement surgery. *Osteoarthr Cartil.* 2012;20(9):967–73.
36. Stacey D, Legare F, Col NF, Bennett CL, Barry MJ, Eden KB, et al. Decision aids for people facing health treatment or screening decisions. *Cochrane Database Syst Rev.* 2014 Jan 28;1:CD001431.

37. Tolk JJ, Janssen RPA, Haanstra TM, Bierma-Zeinstra SMA, Reijman M. The EKSPECT study: the influence of expectation modification in knee arthroplasty on satisfaction of PatiEnts: study protocol for a randomized controlled trial. *Trials*. 2018;19(1):437.
38. Terwee CB, Bot SD, de Boer MR, van der Windt DA, Knol DL, Dekker J, et al. Quality criteria were proposed for measurement properties of health status questionnaires. *J Clin Epidemiol*. 2007;60(1):34–42.
39. Harrington J, Noble LM, Newman SP. Improving patients' communication with doctors: a systematic review of intervention studies. *Patient Educ Couns*. 2004;52(1):7–16.
40. Simblett S, Greer B, Matcham F, Curtis H, Polhemus A, Ferrao J, et al. Barriers to and facilitators of engagement with remote measurement Technology for Managing Health: systematic review and content analysis of findings. *J Med Internet Res*. 2018;20(7):e10480.
41. Classen AAOM. Strategies for patient education in rheumatic diseases (doctoral dissertation). Retrieved from: <https://repository.uhn.ru.nl/handle/2066/206304>.

Publisher's Note

Springer Nature remains neutral with regard to jurisdictional claims in published maps and institutional affiliations.

Ready to submit your research? Choose BMC and benefit from:

- fast, convenient online submission
- thorough peer review by experienced researchers in your field
- rapid publication on acceptance
- support for research data, including large and complex data types
- gold Open Access which fosters wider collaboration and increased citations
- maximum visibility for your research: over 100M website views per year

At BMC, research is always in progress.

Learn more biomedcentral.com/submissions

