

## THE WIDESPREAD OCCURENCE OF WATER VAPOR IN THE CIRCUMSTELLAR ENVELOPES OF CARBON-RICH AGB STARS: FIRST RESULTS FROM A SURVEY WITH HERSCHEL\*/HIFI

D. A. NEUFELD<sup>1</sup>, E. GONZÁLEZ-ALFONSO<sup>2</sup>, G. MELNICK<sup>3</sup>, R. SZCZERBA<sup>4</sup>, M. SCHMIDT<sup>4</sup>, L. DECIN<sup>5,6</sup>, J. ALCOLEA<sup>7</sup>,  
A. DE KOTER<sup>6,8</sup>, F. L. SCHÖIER<sup>9</sup>, V. BUJARRABAL<sup>10</sup>, J. CERNICHARO<sup>11</sup>, C. DOMINIK<sup>6,12</sup>, K. JUSTTANONT<sup>9</sup>,  
A. P. MARSTON<sup>13</sup>, K. MENTEN<sup>14</sup>, H. OLOFSSON<sup>9,15</sup>, P. PLANESAS<sup>10,16</sup>, D. TEYSSIER<sup>11</sup> AND L. B. F. M. WATERS<sup>17,6</sup>

*Draft version December 17, 2010*

### ABSTRACT

We report the preliminary results of a survey for water vapor in a sample of eight C stars with large mid-IR continuum fluxes: V384 Per, CIT 6, V Hya, Y CVn, IRAS 15194-5115, V Cyg, S Cep, and IRC+40540. This survey, performed using the HIFI instrument on board the *Herschel Space Observatory*, entailed observations of the lowest transitions of both ortho- and para-water: the 556.936 GHz  $1_{10} - 1_{01}$  and 1113.343 GHz  $1_{11} - 0_{00}$  transitions, respectively. Water vapor was unequivocally detected in all eight of the target stars. Prior to this survey, IRC+10216 was the only carbon-rich AGB star from which thermal water emissions had been discovered, in that case with the use of the *Submillimeter Wave Astronomy Satellite (SWAS)*. Our results indicate that IRC+10216 is not unusual, except insofar as its proximity to Earth leads to a large line flux that was detectable with *SWAS*. The water spectral line widths are typically similar to those of CO rotational lines, arguing against the vaporization of a Kuiper belt analog (Ford & Neufeld 2001) being the *general* explanation for water vapor in carbon-rich AGB stars. There is no apparent correlation between the ratio of the integrated water line fluxes to the 6.3 micron continuum flux – a ratio which measures the water outflow rate – and the total mass-loss rate for the stars in our sample.

*Subject headings:* circumstellar matter — stars: AGB and post-AGB — stars: abundances — submillimeter: stars

### 1. INTRODUCTION

Over the past two decades, observations of the envelopes of AGB (asymptotic giant branch) stars have revealed a molecular composition that is still not entirely understood. In early models for the chemistry within the circumstellar envelopes of AGB stars, the inner envelope was assumed to possess a composition determined by thermochemical equilibrium (TE) within the stellar

photosphere, while the outer envelope, exposed to the interstellar radiation field, exhibits a time-dependent gas-phase chemistry that is driven by the photodissociative effects of ultraviolet radiation (e.g. Glassgold 1996). In TE, the carbon-to-oxygen ratio is crucial in determining the photospheric composition; cool oxygen-rich stars, with  $C/O < 1$ , are expected to have photospheres that are dominated by CO and H<sub>2</sub>O, while those of carbon-rich stars will be dominated by CO and C<sub>2</sub>H<sub>2</sub>. However, a variety of observations have revealed anomalous abundances for several molecules that cannot be explained by models in which the inner envelope entirely reflects the photospheric abundances in TE and the ensuing chemistry proceeds in the gas phase. More recent models involving shocks (Willacy & Cherchneff 1998; Cherchneff 2006), grain surface reactions (e.g. Willacy 2004), the vaporization of orbiting objects (Ford & Neufeld 2001), or the penetration of UV radiation through a clumpy outflow to the inner envelope (Decin et al. 2010) have been variously invoked to explain the observed abundances of such species as CO, HCN, SiO, CS, H<sub>2</sub>CO, OH and H<sub>2</sub>O in the envelopes of both O-rich and C-rich AGB stars.

While most of the principal circumstellar molecules are easily detected by means of ground-based observations, water has been more elusive. Although water maser emissions from oxygen-rich stars can be detected from the ground, thermal water emissions are detectable only with satellite observatories. As expected, the *Infrared Space Observatory (ISO)* detected luminous water emissions from a variety of oxygen-rich AGB stars (e.g. Barlow 1999, Neufeld et al. 1999). More surprisingly, later observations performed (Melnick et al. 2001) with the *Submillimeter Wave Astronomy Satellite (SWAS)* – and subsequently confirmed with the ODIN satellite

\* Herschel is an ESA space observatory with science instruments provided by European-led Principal Investigator consortia and with important participation from NASA

<sup>1</sup> The Johns Hopkins University, Baltimore, MD 21218, USA

<sup>2</sup> Departamento de Física, Universidad de Alcalá de Henares, Campus Universitario, E-28871 Alcalá de Henares, Madrid, Spain

<sup>3</sup> Harvard-Smithsonian CfA, Cambridge, MA 02138, USA

<sup>4</sup> N. Copernicus Astronomical Center, Toruń, Poland

<sup>5</sup> Instituut voor Sterrenkunde, K. U. Leuven, Belgium

<sup>6</sup> Sterrenkundig Instituut Anton Pannekoek, University of Amsterdam, The Netherlands

<sup>7</sup> Observatorio Astronómico Nacional (IGN), Madrid, Spain

<sup>8</sup> Astronomical Institute, Utrecht University, The Netherlands

<sup>9</sup> Onsala Space Observatory, Dept. of Radio and Space Science, Chalmers University of Technology, SE-43992 Onsala, Sweden

<sup>10</sup> Observatorio Astronómico Nacional (IGN), Alcalá de Henares, Spain

<sup>11</sup> CAB, INTA-CSIC, Ctra de Torrejón a Ajalvir, Madrid, Spain

<sup>12</sup> Department of Astrophysics/IMAPP, Radboud University Nijmegen, The Netherlands

<sup>13</sup> European Space Astronomy Centre, Villanueva de la Cañada, Madrid, Spain

<sup>14</sup> MPI für Radioastronomie, Bonn, Germany

<sup>15</sup> Department of Astronomy, Stockholm University, Sweden

<sup>16</sup> Joint ALMA Observatory, Santiago, Chile

<sup>17</sup> SRON Netherlands Institute for Space Research, Utrecht, The Netherlands

TABLE 1  
SAMPLE OF C STARS SURVEYED FOR WATER VAPOR

Star	R.A.		Dec.		D (pc)	$\dot{M}$ (a)	$v_{\text{sys}}$ (b)	Date (2010)		Duration (s)		Noise (mK) <sup>f</sup>	
	(J2000)		(J2000)					557 GHz	1113 GHz	557 GHz	1113 GHz	557 GHz	1113 GHz
V384 Per	03 26 29.5	+47 31 50	740	5.5	-16.2	Sep 1	Sep 2	3972 <sup>d</sup>	987	2.4	14		
IRC+10216 <sup>c</sup>	09 47 57.4	+13 16 44	110	15	-25.5	May 4,11	May 11	3150 <sup>d</sup>	3200 <sup>a</sup>	2.7	14		
CIT 6 <sup>c</sup>	10 16 02.2	+30 34 19	320	1.9	-1.6	May 11	May 11	4719	987	1.9	16		
V Hya	10 51 37.2	-21 15 00	600	2.1	-17.0	Jun 23	Jun 9	3972 <sup>d</sup>	987	3.4	15		
Y CVn	12 45 07.8	+45 26 25	220	0.15	21.1	Jun 23	Jun 9	3972 <sup>d</sup>	987	2.2	16		
IRAS 15194-5115	15 23 04.9	-51 25 59	590	18	-15.0	Aug 2	N/A <sup>e</sup>	3972 <sup>d</sup>	N/A <sup>e</sup>	2.1	N/A <sup>e</sup>		
V Cyg	20 41 18.3	+48 08 29	530	2.5	14.3	Jun 23	Mar 5	3972 <sup>d</sup>	987	2.6	16		
S Cep	21 35 12.8	+78 37 28	720	3.4	-15.5	N/A <sup>e</sup>	May 12	N/A <sup>e</sup>	987	N/A <sup>e</sup>	13		
IRC+40540 <sup>c</sup>	23 34 27.7	+43 33 02	780	7.0	-17.0	Jun 23	Jun 9	3972 <sup>d</sup>	987	2.5	15		

<sup>a</sup> Mass loss rate in units of  $10^{-6} M_{\odot} \text{ yr}^{-1}$

<sup>b</sup> Systemic velocity in  $\text{km s}^{-1}$  relative to the local standard of rest

<sup>c</sup> IRC+10216, CIT6, and IRC+40540 are known also as CW Leo, RW LMi, and LP And respectively.

<sup>d</sup> Divided into two observations of equal duration with slightly different LO settings (see text)

<sup>e</sup> N/A = not available; planned observation not yet carried out

<sup>f</sup> R.m.s. in a  $1 \text{ km s}^{-1}$  bandwidth

(Hasegawa et al. 2006) – have led to the discovery of water vapor in the envelope of the nearest carbon-rich AGB star with a massive envelope, IRC+10216. Prior to the recent launch of the *Herschel Space Observatory* (Pilbratt et al. 2010), this detection of the lowest,  $1_{10} - 1_{01}$ , rotational transition of ortho-water at 556.936 GHz by SWAS and ODIN remained the only case in which thermal water vapor emission had been detected from a C star.

The *Herschel Space Observatory* presents an opportunity to search for water vapor in C stars with unprecedented sensitivity; with a primary mirror of collecting area  $\sim 30$  times that of the SWAS mirror, and with its Heterodyne Instrument for the Far Infrared (HIFI; de Graauw et al. 2010) employing cryogenic mixers of much lower noise temperature than those flown on SWAS, *Herschel* makes it feasible to search for water in AGB stars considerably more distant than IRC+10216. In addition, *Herschel* provides access to multiple transitions of water vapor. As part of the HIFISTARS Key Program, we carried out a survey for water vapor in a sample comprising eight C stars in addition to IRC+10216 – V384 Per, CIT 6, V Hya, Y CVn, IRAS 15194-5115, V Cyg, S Cep, and IRC+40540 – with the goal of determining whether IRC+10216 is unusual (in addition to being nearby), or whether water vapor is widely detectable in the envelopes of C stars. Our survey involves observations of the lowest transitions of both ortho- and para-water, the 556.936 GHz  $1_{10} - 1_{01}$  and 1113.343 GHz  $1_{11} - 0_{00}$  transitions respectively, toward a selection of C stars with large mid-IR continuum fluxes. Table 1 lists the sources in our sample, together with estimates of their distances,  $D$ , mass-loss rates,  $\dot{M}$ , and systemic velocities relative to the local standard of rest. Although the quantity  $\dot{M}/D^2$  is fairly well constrained, uncertainties in  $D$  make both parameters quite uncertain – a fact that is demonstrated by the wide dispersion of estimates given in the literature – but in the interest of uniformity we adopt the values tabulated by Groenewegen et al. (2002), supplemented by those of Schöier & Olafsson (2001) for the case of Y CVn (for which estimates were not given by Groenewegen et al. 2002). With the exception of Y CVn, which is

classified as a J-type variable carbon star of spectral type CV5J (with V indicating variability and J indicating a large  $^{13}\text{C}/^{12}\text{C}$  ratio), all the stars in the sample are of spectral type CV6 or CV7. V Hya is also of a somewhat different character than the other sources; it is a semi-regular variable (SRa), quite probably a binary (Sahai et al. 2003), and possesses a high velocity outflow and bipolar symmetry that suggests it is in an early stage of *post*-AGB evolution (Kahane et al. 1996, Knapp et al. 1997). The mass-loss rate given in Table 1 is for the component with outflow speed  $\sim 15 \text{ km s}^{-1}$  (identified as the “normal slow wind” by Knapp et al. 1997).

In this *Letter*, we report preliminary results of this survey, based on the observations performed to date toward the eight target stars. The detection of the  $1_{11} - 0_{00}$  water transition toward V Cygni in the very first observation performed in this survey has been reported previously (Neufeld et al. 2010). The data acquisition and reduction are described in §2, and the results are presented in §3. In §4, the results are discussed with reference to various scenarios that have been proposed for the origin for water vapor around C stars.

## 2. OBSERVATIONS AND DATA REDUCTION

The observations reported here were carried out during the period March – September 2010 as part of the HIFISTARS Key Program. We used the HIFI instrument in dual beam switch (DBS) mode to observe two rotational transitions of water vapor towards each source listed in Table 1. The 556.936 GHz  $1_{10} - 1_{01}$  and 1113.343 GHz  $1_{11} - 0_{00}$  transitions were targeted respectively in lower and upper sidebands of Bands 1b and 4b of the HIFI instrument. The telescope beam was centered at the coordinates listed in Table 1, with the reference positions located at offsets of  $3'$  on either side of each source. The beam sizes were  $38''$  and  $19''$  (half power beam width) respectively for the 556.936 GHz and 1113.343 GHz transitions. The data were acquired using the Wide Band Spectrometer (WBS), which provides a spectral resolution of 1.1 MHz and a simultaneous bandwidth of  $\sim 4$  GHz. For each observation, the date and total duration are given in Table 1, together with the r.m.s.

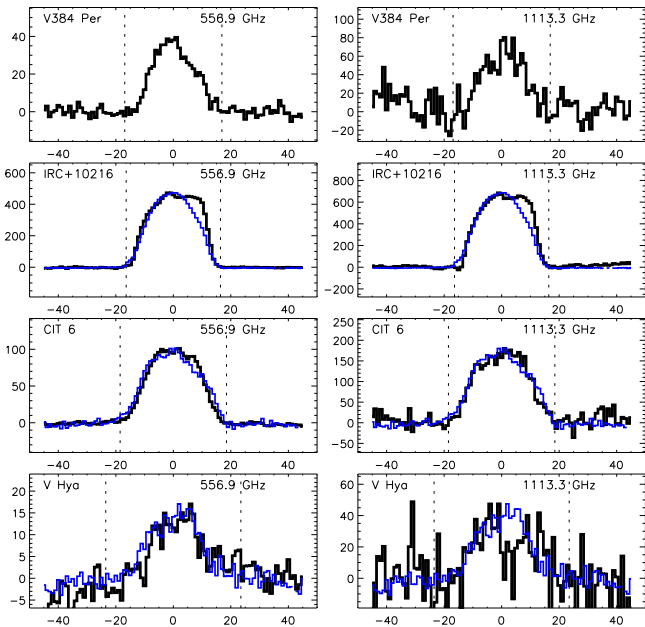


FIG. 1.— Black histogram: Herschel/HIFI spectra of the  $1_{10} - 1_{01}$  556.936 GHz transition of ortho- $\text{H}_2\text{O}$  (left) and the  $1_{11} - 0_{00}$  1113.343 GHz transition of para- $\text{H}_2\text{O}$  (right) observed toward V384 Per, IRC+10216, CIT6, and V Hya. Blue histogram: analogous spectra for CO  $J = 10 - 9$ , where available, scaled to the same peak antenna temperature. The spectra have been continuum-subtracted and rebinned to a spectral resolution of  $1 \text{ km s}^{-1}$ . Doppler velocities are expressed in  $\text{km s}^{-1}$  relative to the systemic velocity of the source, and antenna temperatures (vertical axis) are shown in mK. Dotted lines indicate expansion velocities from the literature (Groenewegen et al. 2002).

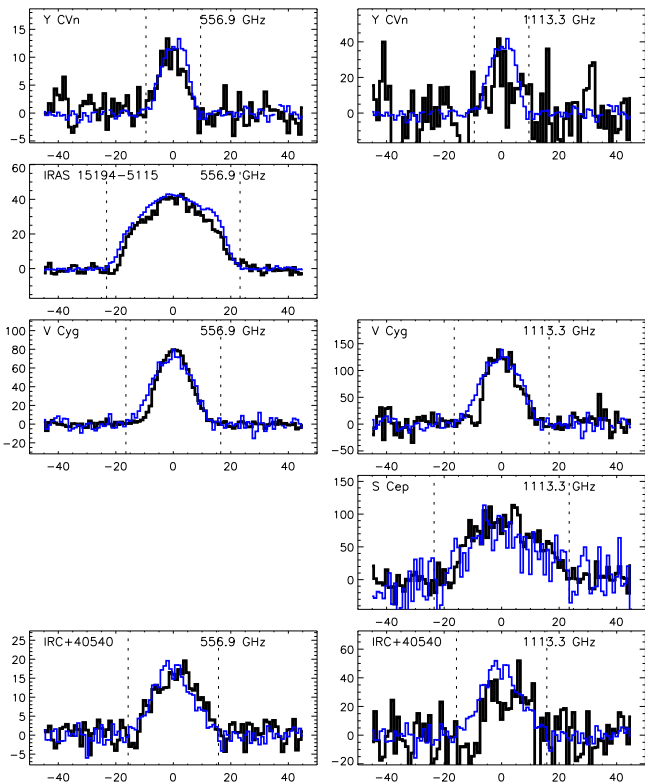


FIG. 2.— Same as Fig. 1, for Y CVn, IRAS-15194, V Cyg, S Cep and IRC+40540. For Y CVn and IRAS-15194 the blue histogram shows CO  $J = 6 - 5$  instead of  $J = 10 - 9$

noise achieved in a  $1 \text{ km s}^{-1}$  bandwidth. As discussed in Neufeld et al. (2011), the data were processed using the standard HIFI pipeline to Level 2, providing fully calibrated spectra with the intensities expressed as antenna temperature and the frequencies in the frame of the Local Standard of Rest (LSR). For several observations, we used a pair of local oscillator (LO) frequencies, separated by a small offset, to confirm the assignment of any observed spectral feature to either the upper or lower sideband of the (double side band) HIFI receivers. The resultant spectra were coadded so as to recover the signal-to-noise ratio that would have been obtained at a single LO setting. Spectra obtained for the horizontal and vertical polarizations were found to be very similar in their appearance and noise characteristics and were likewise coadded.

### 3. RESULTS

Figures 1 and 2 show the continuum-subtracted spectra obtained from each of the observations listed in Table 1, with the water spectra plotted in black. To improve the signal-to-noise ratio, each spectrum has been rebinned to a spectral resolution of  $1 \text{ km s}^{-1}$ . In each case, the velocity scale is relative to the systemic velocity of the source (Table 1, as given by Knapp et al. 1998 for Y CVn and Groenewegen et al. 2002 for the other stars.) The blue histograms show, for comparison, the CO  $J = 6 - 5$  (in the case of IRAS 15194-5115 and Y CVn) or CO  $J = 10 - 9$  (other stars) spectra obtained with HIFI, scaled to have the same peak antenna temperature as the water spectra. No HIFI spectra of CO are yet available for V384 Per. Water vapor is clearly detected in each of the eight target stars by means of one or both of the observed transitions. As predicted by excitation models that we performed in anticipation of *Herschel* (González-Alfonso, Neufeld, & Melnick 2007; hereafter GNM), and given the sensitivity of *Herschel* as a function of frequency, the  $1_{10} - 1_{01}$  transition provides the most sensitive probe of water in C stars (although in the single case of S Cep, the detection of water vapor was obtained through observations of the  $1_{11} - 0_{00}$  transition alone, the  $1_{10} - 1_{01}$  having not yet been observed.) In Table 2, we list the integrated antenna temperatures and line fluxes for each transition, together with the  $6.3 \mu\text{m}$  continuum flux obtained from the *ISO* observations of Sloan et al. (2003) or – in the cases of CIT6, V Hya and IRAS 15194-5115 – estimated from the  $8.8 \mu\text{m}$  fluxes reported by Monnier, Geballe & Danchi (1998). The absolute flux calibration for *ISO* spectroscopy was accurate to within  $\sim 30\%$ . The continuum flux is of particular interest because theoretical models for the excitation of water in C stars (Agúndez & Cernicharo 2006; GNM) indicate that the observed  $1_{10} - 1_{01}$  and  $1_{11} - 0_{00}$  rotational emissions are excited primarily by radiative pumping through the  $\nu_2$  vibrational band at  $6.3 \mu\text{m}$ .

### 4. DISCUSSION

Although there are real differences between the  $\text{H}_2\text{O}$  and CO line profiles for some of the spectra shown in Figures 1 and 2 (most notably for the IRC+10216 spectra which have the highest signal-to-noise ratio), the line widths are typically quite similar. In particular, the half width at zero intensity is typically close to literature estimates of the expansion velocity (outer dotted vertical

TABLE 2  
WATER LINE INTENSITIES AND FLUXES

Star	$\int T_A dv$		Line flux <sup>a</sup>		$F_{6.3}$ ( $10^3$ Jy)
	(K km s <sup>-1</sup> )		(10 <sup>-17</sup> W m <sup>-2</sup> )		
	557 GHz	1113 GHz	557 GHz	1113 GHz	
V384 Per	0.64	1.12	0.55	1.95	0.46
IRC+10216	10.3	14.6	8.70	25.22	22.3
CIT 6	2.17	3.81	1.86	6.62	4.00
V Hya	0.28	0.65	0.24	1.13	1.70
Y CVn	0.11	0.27	0.09	0.47	0.37
IRAS 15194-5115	1.12	N/A <sup>b</sup>	0.96	N/A <sup>b</sup>	1.00
V Cyg	1.10	1.74	0.94	3.02	1.04
S Cep	N/A <sup>b</sup>	2.54	N/A <sup>b</sup>	4.41	0.94
IRC+40540	0.29	0.37	0.25	0.64	0.40

<sup>a</sup> We conservatively estimate the typical flux uncertainty as better than 15%, except for V Hya, Y CVn, and IRC+40540. In these sources, the 1113 GHz flux uncertainties are dominated by noise; we estimate them as 20%, 30%, and 25% ( $1\sigma$ ) respectively.

<sup>b</sup> Planned observation not yet carried out

lines in each panel). This feature of the spectra indicates that water-emitting gas is typically present over a wide range of outflow directions, including streamlines directed close to the line-of-sight, and argues strongly against the vaporization of a Kuiper belt analog (Ford & Neufeld 2001) being the *general* explanation for water vapor in carbon-rich AGB stars. Any collection of orbiting icy objects with a flattened structure (like the Kuiper belt) would release water that would be entrained in the outflow and carried along streamlines with small inclinations to the equatorial plane of the structure. Viewed nearly edge-on, such an anisotropic distribution of water vapor could indeed yield a spectral line of width comparable to that of the CO lines; but viewed nearly face-on, the water lines would be considerably narrower. Thus, while the vaporization of a Kuiper belt might account for the water line profile observed in any *individual* source, the statistical ensemble now available from our survey is not consistent with Kuiper belt vaporization as a general explanation for water vapor. (Note, however, that based upon multitransition observations available for IRC+10216 but not for the other sources in our sample, Decin et al. 2010, and subsequently Neufeld et al. 2011, have argued that the distribution of water vapor in that source is inconsistent with the vaporization of small icy objects on circular orbits being the source of the water in that source.)

Detailed calculations by GNM predict luminosities for the  $1_{10} - 1_{01}$  and  $1_{11} - 0_{00}$  transitions that are roughly proportional to the  $6.3\ \mu\text{m}$  continuum luminosity, and that the ratio of integrated line flux to  $6.3\ \mu\text{m}$  continuum flux is an increasing function of the water mass-loss rate. Because collisional excitation is negligible except in the densest CSEs, the line fluxes show almost no dependence upon the gas density; thus the ratio of integrated line flux,  $F_l$ , to continuum flux,  $F_{6.3}$ , is nearly independent of the total mass-loss rate. In Figure 3, we plot the  $F_l/F_{6.3}$  ratio for each star as a function of the total mass-loss rate,  $\dot{M}$ . Here, we used the results tabulated in Table 2, with integrated line fluxes in units of  $10^{-17}$  W m<sup>-2</sup>, and the  $6.3\ \mu\text{m}$  continuum fluxes are in units of  $10^3$  Jy; thus the plotted ratio has units of MHz. The plotted values of  $\dot{M}$  are the literature estimates tabu-

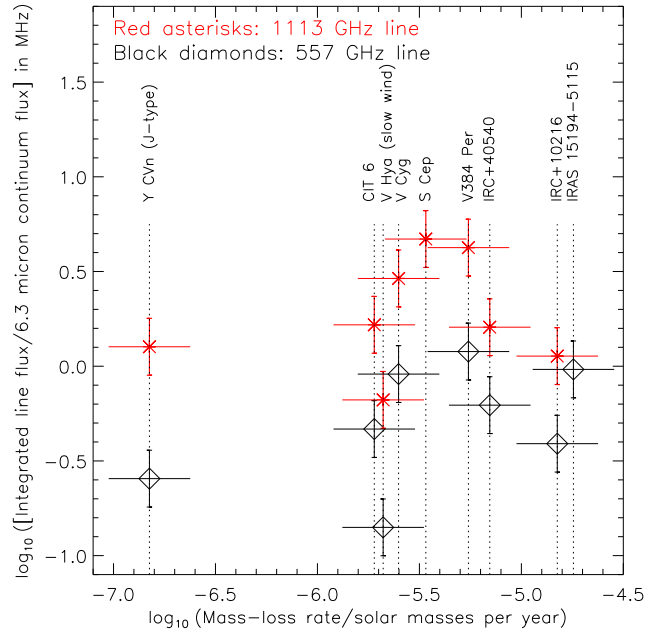


FIG. 3.— Ratio of integrated line flux to  $6.3\ \mu\text{m}$  continuum flux for the 557 GHz (black diamonds) and 1113 GHz (red asterisks) water lines, as a function of the estimated total mass-loss rate (Table 1)

lated in Table 1, with error bars indicating an estimated uncertainty of 0.2 dex. If the water vapor present in these CSEs is produced by chemical means within the outflow with some universal  $\text{H}_2\text{O}/\text{H}_2$  ratio, the  $F_l/F_{6.3}$  ratio (measuring water outflow rate) and the total mass-loss rate would show a positive correlation. There is no discernible correlation in Figure 3, suggesting that stars with larger mass outflow rates tend to have smaller water *abundances* (although it remains unclear whether this tendency indicates a *causative* relationship). Quantitative estimates of the water outflow rates and abundances will require detailed modeling that will be the subject of a future paper (and that we hope to constrain further with future *Herschel* observations.) For the two sources that have been studied in detail to date, V Cyg (Neufeld et al. 2010) and IRC+10216 (GNM; Neufeld et al. 2011), the derived water outflow rates support the lack of positive correlation suggested by Figure 3. While IRC+10216 has a total mass-loss rate  $\sim 10$  times that of V Cyg, it shows a water outflow rate that is only  $\sim$  one-third as large; the inferred  $\text{H}_2\text{O}/\text{H}_2$  abundance ratio in the CSE of V Cyg ( $2 \times 10^{-6}$ ) is therefore  $\sim 25$  times larger than that inferred for IRC+10216 ( $8 \times 10^{-8}$ ).

HIFI has been designed and built by a consortium of institutes and university departments from across Europe, Canada and the United States under the leadership of SRON Netherlands Institute for Space Research, Groningen, The Netherlands and with major contributions from Germany, France and the US. Consortium members are: Canada: CSA, U. Waterloo; France: CESR, LAB, LERMA, IRAM; Germany: KOSMA, MPIfR, MPS; Ireland, NUI Maynooth; Italy: ASI, IFSI-INAF, Osservatorio Astrofisico di Arcetri- INAF; Netherlands: SRON, TUD; Poland: CAMK, CBK; Spain: Observatorio Astronómico Nacional (IGN), Centro de Astrobiología

(CSIC-INTA). Sweden: Chalmers University of Technology - MC2, RSS & GARD; Onsala Space Observatory; Swedish National Space Board, Stockholm University - Stockholm Observatory; Switzerland: ETH Zurich, FHNW; USA: Caltech, JPL, NHSC.

This research was performed, in part, through a

JPL contract funded by the National Aeronautics and Space Administration. E.G-A is a Research Associate at the Harvard-Smithsonian Center for Astrophysics. R. Sz. and M. Sch. acknowledge support from grant N 203 581040. J.A. and V.B. have been supported by grant "ASTROMOL" (CSD2009-00038).

## REFERENCES

- Agúndez, M., & Cernicharo, J. 2006, *ApJ*, 650, 374  
 Barlow, M. J., 1999, *IAU Symposium* 191, eds. T. Le Bertre, A. Lebre, and C. Waelkens., p. 353  
 Cherchneff, I. 2006, *A&A*, 456, 1001  
 Decin, L., et al. 2010, *Nature*, 467, 64  
 de Graauw, T., et al. 2010, *A&A*, 518, L6  
 Ford, K. E., & Neufeld, D. A. 2001, *ApJ*, 557, L113  
 Glassgold, A. E. 1996, *ARA&A*, 34, 241  
 González-Alfonso, E., Neufeld, D. A., & Melnick, G. J. 2007, *ApJ*, 669, 412 (GNM)  
 Groenewegen, M. A. T., Sevenster, M., Spoon, H. W. W., & Pérez, I. 2002, *A&A*, 390, 511  
 Kahane, C., Audinos, P., Barnbaum, C., & Morris, M. 1996, *A&A*, 314, 871  
 Knapp, G. R., Jorissen, A., & Young, K. 1997, *A&A*, 326, 318  
 Knapp, G. R., Young, K., Lee, E., & Jorissen, A. 1998, *ApJS*, 117, 209  
 Melnick, G. J., Neufeld, D. A., Ford, K. E. S., Hollenbach, D. J., & Ashby, M. L. N. 2001, *Nature*, 412, 160  
 Monnier, J. D., Geballe, T. R., & Danchi, W. C. 1998, *ApJ*, 502, 833  
 Neufeld, D. A., Feuchtgruber, H., Harwit, M., & Melnick, G. J. 1999, *ApJ*, 517, L147  
 Neufeld, D. A., et al. 2010, *A&A*, 521, L5  
 Neufeld, D. A., et al. 2011, *ApJL*, in press (arXiv: 1012.1854)  
 Pilbratt, G. L., et al. 2010, *A&A*, 518, L1  
 Sahai, R., Morris, M., Knapp, G. R., Young, K., & Barnbaum, C. 2003, *Nature*, 426, 261  
 Schöier, F. L., & Olofsson, H. 2001, *A&A*, 368, 969  
 Sloan, G. C., Kraemer, K. E., Price, S. D., & Shipman, R. F. 2003, *ApJS*, 147, 379  
 Willacy, K. 2004, *ApJ*, 600, L87  
 Willacy, K., & Cherchneff, I. 1998, *A&A*, 330, 676