

## PDF hosted at the Radboud Repository of the Radboud University Nijmegen

The following full text is a publisher's version.

For additional information about this publication click this link.

<http://hdl.handle.net/2066/79857>

Please be advised that this information was generated on 2021-06-24 and may be subject to change.

# Adequate Patient Characterization in COPD: Reasons to Go Beyond GOLD Classification

Tewe L. Verhage, Yvonne F. Heijdra, Johan Molema, Leonie Daudey, P.N. Richard Dekhuijzen and Jan H. Vercoulen\*



Departments of Pulmonary Diseases and Medical Psychology, Radboud University Nijmegen Medical Centre, Nijmegen, The Netherlands

**Abstract:** The Global Initiative for Chronic Obstructive Lung Disease (GOLD) serves as a guide to treat and manage different severity classes of patients with COPD. It was suggested that the five categories of FEV<sub>1</sub> % predicted (GOLD 0–4), can be applied for selecting different therapeutic approaches. However, validation of these selective properties is very poor. To determine the relevance of the GOLD staging system for estimating the severity of clinical problems, GOLD 2 (n=70) and GOLD 3 (n=65) patients were drawn from a prospective cohort of patients with COPD and evaluated cross-sectionally by a newly developed Nijmegen Integral Assessment Framework (NIAF). The NIAF is a detailed assessment of a wide range of aspects of health status (HS). Significant, though small, differences were found in Static Lung Volumes, Exercise Capacity, Subjective Pulmonary Complaints, Subjective Impairment, and Health-Related QoL, besides Airflow of course. Moreover, overlap between scores of these five HS sub-domains was substantial, indicating small clinical relevance for discernment. No significant differences were found in nine other aspects of HS. It is concluded that GOLD stages do not discriminate in any aspect of HS other than airflow obstruction, and therefore do not help the clinician in deciding which treatment modalities are appropriate.

## INTRODUCTION

The GOLD classification for chronic obstructive pulmonary disease (COPD) has been introduced in order to facilitate comparability of clinical studies, by stratifying patients according to severity of airflow limitation, measured as forced expiratory volume in 1 second as percentage of predicted (FEV<sub>1</sub>%) [1,2]. Severity classes of COPD can be used to tailor diagnostic and therapeutic interventions in the management of this large patient group.

Clearly, airflow obstruction is only one aspect of COPD. Other key pathophysiological aspects include hyperinflation, diminished exercise capacity, malnourishment, and decreased muscle strength. In addition, there are clinical manifestations such as dyspnoea, functional impairment in daily life, and quality of life. All these aspects are key components of health status (HS) [3-5].

It is unclear to what extent GOLD stages discriminate in aspects of health status, other than airflow obstruction. One study showed a statistically significant difference only in St. George's Respiratory Questionnaire (SGRQ) section impact and total score between GOLD 2 and 3 (previously designated as stages 2a and 2b), but not in the sections symptoms and activities [6]. Another study found higher exacerbation rates with increasing COPD severity stage (0-IV), but the correlation was weak ( $r=0.29$ ) [7]. Other relationships between GOLD stages and aspects of health status have not been reported.

In studies on the relationship between health status and GOLD staging, to date, only few aspects of health status were measured. The SGRQ is most frequently used, but as this instrument contains only three sections, at best three aspects of health status are measured. In a previous study we have developed and validated a conceptual framework of health status, the Nijmegen Integral Assessment Framework (NIAF) [8]. This framework provides a much more detailed definition of health status, and is much more formulated in terms of empirical observations than definitions found in the literature. The NIAF covers the following main domains of health status: Physiological Functioning, Complaints, Functional Impairment, and Quality of Life. These four main domains were found to be subdivided into 15 more concrete and relatively independent sub-domains. In addition, the NIAF provides an integration of many existing tests and instruments, by indicating which aspect of health status is measured by each instrument.

The purpose of the present study was to evaluate the relevance of the GOLD classification in COPD to a broad spectrum of aspects of health status, as measured by the NIAF. We focused on GOLD stages 2 and 3, as these stages make up the major part of patients seen in primary and secondary care, and because previous studies have shown that GOLD stages discriminated in aspects of health status between these two stages, and not between other consecutive stages.

## METHODS

### Study Design and Recruitment of Patients

Cross-sectional data were collected from a prospective cohort of patients with COPD, who visited three outpatient pulmonary clinics for respiratory complaints. The clinics

\*Address correspondence to this author at the Departments of Medical Psychology and Pulmonary Diseases, Radboud University Nijmegen Medical Centre, 6561 KE Groesbeek, The Netherlands; Tel: 00 31 24 6859554; Fax: 00 31 24 6859290; E-mail: J.Vercoulen@ULC.umcn.nl

consisted of one University Hospital (Radboud University Nijmegen Medical Centre, location Dekkerswald), a non-academic teaching hospital (Rijnstate Hospital), and a smaller city-hospital (Maas Hospital). Patients were seen by pulmonologists, whether for reasons of follow-up or new referrals. All patients with an established diagnosis of COPD within GOLD stages 2 and 3 ( $FEV_1$  post-bronchodilation between 30-80% predicted), and in a stable condition, were selected by examination of the medical records by one of the authors (JM). Exclusion criteria were: co-morbidity (e.g. cardiac, neurological, oncological, or diabetes mellitus), acute exacerbation of COPD within six weeks before enrolment, participation in a pulmonary rehabilitation program within the last six months, or inability to speak Dutch.

The recruitment procedure resulted in 361 eligible patients (Fig. 1). Of them, 316 (88%) gave permission for a telephone call by one of the investigators (LD). One-hundred-and-forty-eight patients did not consent with the study protocol for a variety of reasons, e.g. refusing cycle ergometry, travel problems, being too busy at work or at home, feeling too old. Of the remaining 168 patients, all of whom had given written informed consent, 156 belonged to GOLD stages 2 and 3. Twelve patients had to be classified into GOLD 1 or 4 on the basis of their baseline post-bronchodilator spirometry (shortly after enrolment), which differed slightly from spirometric values observed during the

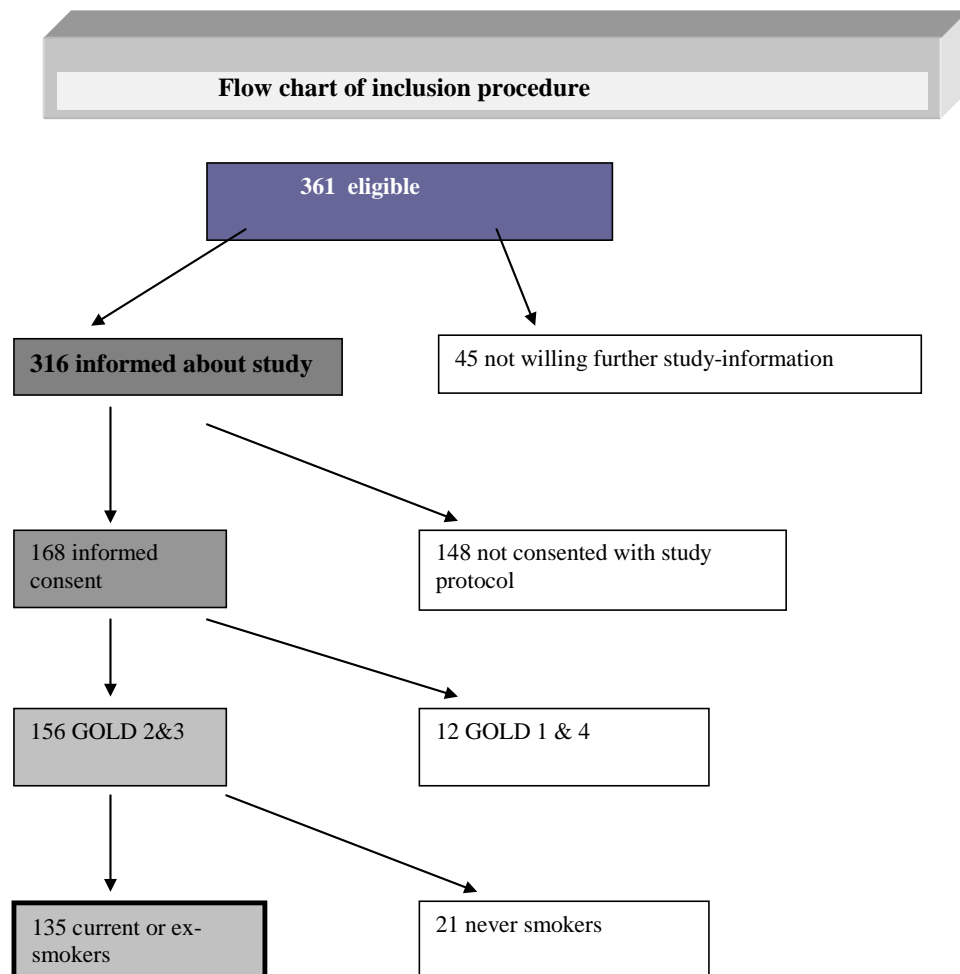
recruitment procedure. Finally, 21 non-smokers, all with a clear history of asthma extending from childhood, were excluded, resulting in 135 smoking-related COPD patients. Subgroup analysis of these never smoking chronic asthmatics revealed neither significant differences in scores of the sub-domains of health status, nor in demographic variables, as compared to the total group (results not shown).

### Measurements

Health Status was assessed by the Nijmegen Integral Assessment Framework, developed and validated in a previous study of our research group [8]. This framework covers the following main domains of Health Status: (I) Physiological functioning, (II) Complaints, (III) Functional Impairment and (IV) Quality of Life. These main domains were shown to be subdivided into 15 different sub-domains. Each sub-domain is measured by different existing tests and instruments, and for each sub-domain a Sub-domainTotalScore was calculated. Reliability of the different sub-domains of the framework was adequate to excellent. See Appendix for details on instruments used for each sub-domain.

#### I. Main Domain Physiological Functioning

Routine pulmonary function tests were performed including transfer capacity for carbon monoxide (CO), maximal exercise capacity, respiratory and skeletal muscle function, and indices of body composition. Various parameters were



**Fig. (1).** Flow chart of inclusion procedure of patient recruitment, with list of reasons for non-participation.

incorporated into one of the following six sub-domains: Airflow, Static lung volumes, Exercise capacity, Gas Exchange, Muscle Force, and Body Composition. Maximal ergometry consisted of a symptom limited, incremental bicycle test. Patients cycled at a rate of 60 rpm. After a 3 minute reference phase, workload was increased each minute by 10% of estimated maximum work capacity. Whenever major abnormalities developed during the test in ECG or O<sub>2</sub> saturations at pulse-oxymetry, the test was ended by the attending physician. The quadriceps leg pressure dynamometer was used to measure quadriceps force. Fat free mass index (FFMI) was derived from the standard formula using bioelectrical impedance measurement (Bodystat 1997).

## II. Main Domain Complaints

The sub-domains were measured by specific subscales of the following self-reported questionnaires: Physical Activity Rating Scale-Dyspnoea (PARS-D) [9], Dyspnoea Emotions Questionnaire (DEQ) [8], and Quality of Life for Respiratory Illness Questionnaire (QoLRIQ) [10].

## III. Main Domain Functional Impairment

The following questionnaires were used: Sickness Impact Profile (SIP) [11, 12], Global Impairment (measuring general subjective experienced functional impairment) [9], and Quality of Life for Respiratory Illness Questionnaire (QoLRIQ). In addition, an accelerometer was used to measure actual physical activity level in daily life [9]. This small electronic device is worn at the ankle for 10 consecutive days, 24 hours per day (except when taking a bath or when swimming).

## IV. Main Domain Quality of Life

The Satisfaction with Life Scale (SWLS) [13, 14], Symptom Check List (SCL) [15], Beck Depression Inventory (BDI) [16], and specific questions concerning satisfaction with physical functioning, future, spouse, and social functioning [8] were used.

## Statistical Analyses

Differences between GOLD 2 and 3 with respect to nominal variables were tested by  $\chi^2$  test. Differences in the Sub-domainTotalScores of the Nijmegen Integral Assessment Framework between GOLD stages 2 and 3 were analyzed by t-tests. To avoid Type I error due to the large number of tests, the p-value was set at < 0.01 for all analyses. For Sub-domainTotalScores that reached significance, box-plots were produced to test the clinical relevance of the statistical difference found between GOLD stages 2 and 3. The larger the overlap between both stages, the less the clinical relevance. As the GOLD classification represents a categorical system, with relatively arbitrary boundaries, additional analyses were performed using the non-categorized FEV<sub>1</sub>% predicted. For this purpose, Pearson correlation coefficients of FEV<sub>1</sub>% predicted with the Sub-domainTotalScores were calculated.

## RESULTS

### Patient Characteristics

The main characteristics describing the patient sample are presented in Table 1. No significant differences were found between patients in GOLD 2 and 3 concerning age,

sex, body mass index (BMI), smoking status, and duration of a self-reported diagnosis of COPD. The same was true for inspiratory vital capacity (IVC)% predicted, TLC% predicted, and PaCO<sub>2</sub>% predicted. TLCO% predicted was significantly different between the two GOLD stages. Obviously, FEV<sub>1</sub>% predicted and Tiffeneau index were significantly different, because the division into different GOLD stages is based on FEV<sub>1</sub>% predicted. The number of patients in each group was equally distributed.

**Table 1. Anthropometric, Basic Pulmonary Function, and Demographic Data of the Study Sample**

Variable	(N=70) GOLD 2	GOLD 3 (N=65)
Sex Male	57	54
Age yrs	64.3 (10.2)	64.7 (8.3)
BMI kg/m <sup>2</sup>	26.5 (3.8)	24.8 (4.0)
IVC %pred	94.5 (15.2)	90.1 (14.2)
FEV <sub>1</sub> %pred	61.0 (7.1)	40.9 (5.2)
Tiffeneau %pred	50.0 (8.0)	35.0 (8.0)
TLC %pred	100.9 (16.6)	106.0 (14.7)
TLCO %pred	73.7 (21.5)	59.4 (22.3)
PaO <sub>2</sub> rest, kPa	11.1 (1.3)	10.6 (1.3)
PaCO <sub>2</sub> rest, kPa	5.1 (0.5)	5.2 (0.5)
Smoking status		
current smoking	22	18
quit	48	47
Self-reported COPD diagnosis, yrs.		
< 1yr.	12	5
1 – 10 yrs.	28	30
> 10 yrs.	30	30

Note: BMI= body mass index; IVC %pred= inspiratory vital capacity as percentage of predicted; FEV<sub>1</sub> %pred= forced expiratory volume in one second as percentage of predicted; Tiffeneau %pred= FEV<sub>1</sub>/IVC as percentage of predicted. TLC %pred= total lung capacity as percentage of predicted; TLCO %pred= lung transfer capacity for carbon monoxide as percentage of predicted. Data are presented as N, or mean (SD).

### Sub-Domains of Health Status in Relation to GOLD 2 and 3

Data of pulmonary function at rest and during maximal cycle ergometry, muscle function, and body composition are summarized by the six sub-domains of Physiological Functioning, and are shown in Table 2. Regarding FFMI, all values were in the normal range (> 16 kg/m<sup>2</sup> for males and > 15 kg/m<sup>2</sup> for females), although the mean value of females in GOLD 3 hardly exceeded the lower limit of normal. Results on the sub-domains of the main domains Complaints, Functional Impairment, and Quality of Life are presented in Table 3.

Though a clear difference existed between GOLD 2 and 3 regarding the sub-domain Airflow, differences in the other Sub-domainTotalScores were small or absent. Statistical significant differences were only found in five out of the other 14 sub-domains: Static lung volumes, Exercise capacity, Subjective Pulmonary Complaints, Subjective Impair-

ment, and Health-Related QoL. The sub-domain Gas Exchange (Table 2) lacks a Sub-domainTotalScore, as the two composing variables were not linear in distribution. Box-plots (Fig. 2) show that considerable overlap existed between GOLD stage 2 and 3 for all five sub-domains that reached statistical significance.

**Table 2. Health Status Main Domain (I) Physiological Functioning. Sub-Domain Total Scores (Mean (SD)) are Presented with p-Values for Difference Between GOLD Stage 2 and 3 and Values of Individual Parameters Composing Each Sub-Domain. Higher Scores of Sub-Domain Total Scores Indicate Worse Condition**

	GOLD 2	GOLD 3	p-Value T-Test
	Mean (SD)	Mean (SD)	
<i>Airflow</i>	<b>762.7 (22.8)</b>	<b>812.7 (21.8)</b>	<b>&lt; .001</b>
FEV <sub>1</sub> %pred	61.0 (7.1)	40.9 (5.2)	
MEF <sub>50</sub> %pred	24.7 (9.7)	13.1 (5.2)	
VE max %pred	80.0 (15.7)	93.2 (22.1)	
<i>Static lung volumes</i>	<b>145.6 (28.4)</b>	<b>159.8 (26.3)</b>	<b>.003</b>
TLC %pred	100.9 (16.6)	106.0 (14.7)	
RV %pred	120.3 (33.0)	142.6 (33.2)	
<i>Exercise Capacity</i>	<b>444.5 (42.7)</b>	<b>478.5 (34.2)</b>	<b>&lt; .001</b>
HR <sub>max</sub> %pred	86.2 (13.8)	82.0 (11.9)	
V <sub>O2max</sub> %pred	77.9 (19.1)	63.2 (13.0)	
TLCO %pred	73.7 (21.5)	59.4 (22.3)	
Delta BE (kPa)	-7.0 (2.8)	-5.5 (2.2)	
<i>Gas Exchange:</i>			
Δ (A-a) <sub>DO2</sub> (kPa)	0.96 (1.4)	1.14 (1.2)	.417
Δ Pa <sub>CO2</sub> (kPa)	0.32 (0.5)	0.52 (0.5)	.017
<i>Muscle Force</i>	<b>208.2 (34.0)</b>	<b>210.6 (33.7)</b>	.675
Pi max %pred	114.9 (35.6)	107.9 (32.0)	
Pe max %pred	79.1 (23.2)	80.2 (23.8)	
Leg force %pred	83.4 (23.4)	83.2 (24.5)	
<i>Body Composition</i>	<b>861.9 (27.2)</b>	<b>872.2 (28.0)</b>	.032
BMI (kg/m <sup>2</sup> )	26.5 (3.8)	24.8 (4.0)	
FFMI (kg/m <sup>2</sup> )			
males	18.29 (1.8)	17.69 (1.8)	
females	15.88 (1.9)	15.08 (1.5)	

Note: Delta BE= change in Base Excess during exercise test; Δ (A-a)<sub>DO2</sub> (kPa)= change in (A-a)<sub>DO2</sub> during exercise test; ΔPa<sub>CO2</sub> (kPa): change in Pa<sub>CO2</sub> during exercise test calculated as value at maximum exercise minus value at rest; FFMI : fat free mass index; values for males and females separately, taking into account different lower limits of normal. p < .01 is considered statistically significant and is displayed in bold.

### Sub-Domains of Health Status in Relation to FEV<sub>1</sub>% Predicted

Correlations between Sub-domainTotalScores and FEV<sub>1</sub>% predicted are presented in Table 4. Significant correlations were found only for Airflow, Exercise capacity, and an index of Gas Exchange (Δ Pa<sub>CO2</sub>).

### DISCUSSION

This is the first study that evaluated the relevance of the GOLD classification in relation to a broad range of aspects of health status in COPD. In the present study it was shown

that the GOLD classification has no clinical relevance in aspects of health status other than airflow obstruction.

The relevance of GOLD stages with respect to different aspects of health status (HS) was evaluated using the recently developed Nijmegen Integral Assessment Framework (NIAF) of health status in COPD [8]. Most existing instruments contain only three to five subscales, and thus measure only few aspects of HS. An integral assessment of HS therefore requires the use of multiple instruments. However, an evidence-based integration of existing instruments is lacking [17]. The NIAF covers the main domains Physiological Functioning, Complaints, Functional Impairment, and Quality of Life. We found that these four main domains were conceptually distinct, and were shown to be further subdivided into 15 more concrete and homogeneous sub-domains. The NIAF has four key characteristics. First, it covers a broad range of aspects of health status relevant to COPD. Second, it integrates existing instruments by indicating which instruments measure the same sub-domain of HS, and it provides information on the validity of these instruments by indicating which sub-domain is actually measured. Third, all 15 sub-domains were shown to be relatively independent, which means that each sub-domain represents a unique aspect of the patient's health status. Fourth, the sub-domains are measured by existing tests and instruments and for each sub-domain a single score is calculated. Taken together, the NIAF provides an empirical and detailed definition of health status, and allows a valid and integral assessment of 15 relatively unrelated and therefore unique aspects of health status in COPD, expressed in only 15 scores.

We found significant differences between GOLD stage 2 and stage 3 in only five of 15 sub-domains, other than airflow obstruction. These were Static lung volumes, Exercise Capacity, Subjective Pulmonary Complaints, Subjective Impairment, and Health-Related QoL. Considering the large overlap in the scores of these five sub-domains between both stages, the clinical relevance of these differences is small. With respect to the sub-domain Exercise Capacity, significant but minor correlations with FEV<sub>1</sub>% predicted were reported by several authors, based mostly on maximal oxygen consumption (V<sub>O2max</sub>), varying between .22 and .44 [18-20]. In the present study the sub-domain Exercise Capacity contained three other factors in addition to V<sub>O2max</sub>, but we found a similar correlation with FEV<sub>1</sub>% predicted (r= .38). Hyperinflation commonly occurs in conjunction with decreasing FEV<sub>1</sub>, but empirical studies on this issue are lacking. The correlation of the sub-domains Static Lung Volumes and FEV<sub>1</sub>% predicted was low (r=-.22) and not statistically significant, indicating low shared variance. With respect to the main domain Complaints, there was a significant difference between both stages in sub-domain Subjective Pulmonary Complaints, but not in the sub-domains Dyspnoea Emotions and Dyspnoea Expected. With respect to the main domain Functional Impairment, GOLD discriminated in the sub-domain Subjective Impairment, but not in the sub-domains Behavioural Impairment and Actual Physical Activity. Concerning the main domain Quality of Life, GOLD stages discriminated only in the sub-domain Health-Related QoL.

Poor associations between airflow obstruction and other pathophysiological parameters, complaints, functional impairment, and quality of life have been reported by many

**Table 3. Health Status (HS) Main Domains II Complaints, III Functional Impairment and IV Quality of Life. Sub-Domain Total Scores Mean (SD) for GOLD 2 and 3 and p-Values for Differences from T-Tests. Detailed Information on the Instruments that Constitute these Sub-Domains is Available in Appendix 1**

	GOLD 2	GOLD 3	Diff. GOLD 2 vs 3. (T-Test)
	Mean (SD)	Mean (SD)	p Value
<i>II Complaints</i>			
subjective pulmonary complaints	57.3 (19.2)	69.2 (20.5)	<b>.001</b>
dyspnoea emotions	40.1 (13.2)	45.2 (12.1)	.023
dyspnoea expected	2.1 (0.9)	2.5 (1.0)	.032
<i>III Functional Impairment</i>			
actual physical activity	177.3 (27.1)	182.4 (30.3)	.305
behavioural impairment	21.3 (16.2)	27.8 (16.4)	.023
subjective impairment	98.3 (22.9)	111.4 (24.7)	<b>.002</b>
<i>IV Quality of Life</i>			
general wellbeing	53.7 (12.1)	56.4 (11.7)	.190
Health-Related QoL	19.1 (8.0)	23.2 (9.1)	<b>.006</b>
satisfaction in social relations	9.6 (8.1)	10.1 (8.9)	.703

Note: Significant p-values are depicted in bold.

studies [17, 20-27], but little research has been done on the clinical relevance of the GOLD classification system in relation to these different aspects of health status. A low correlation ( $r=0.29$ ) was reported between GOLD staging and number of hospital readmissions for exacerbations [7]. Antonelli-Incalzi *et al.* [6] found significant differences between GOLD stages regarding the St. George's Respiratory Questionnaire (SGRQ). However, no significant differences were found for the 6-minute walk distance, quality of sleep, and cognitive and affective status. Also, the differences in the SGRQ scores were only found for some subscales of the SGRQ, and only between stages 2 and 3 (previously stages 2a and 2b). Similar to the present study, the authors found large variability within all GOLD stages, resulting in major overlap in scores between consecutive stages. Strikingly, this study also demonstrated substantial problems in health status in patients with COPD with GOLD stage 0 and stage 1. The authors concluded that health status cannot be inferred from GOLD stage.

Two studies used criteria for disease staging similar to GOLD. Ferrer and colleagues [28] found low to moderate correlations of the SGRQ subscales with COPD stages according to the American Thoracic Society (ATS) guidelines ( $r=.27$  to  $.51$ ). This relationship was stronger in patients without co-morbidity, as compared to patients with co-morbidity ( $r=.68$  versus  $.40$ , respectively). These authors also reported a large overlap in scores between the ATS stages and substantial health status problems in patients with mild disease severity. Hajiro *et al.* used British Thoracic Society (BTS) staging criteria [29]. They found significant differences between moderate and severe COPD on all subscales of the SGRQ and  $V_{O2max}$ . Between mild and moderate COPD they only found significant differences on the subscale activity and the total score of the SGRQ. Several pulmonary function parameters, dyspnoea, anxiety, and depression were not significantly different between any stage.

Results of the present study and previous studies show that a classification system based on the severity of airflow

obstruction has no relevance with respect to aspects of health status other than airflow obstruction. In only a few aspects of health status significant relationships were found, but considering the major overlap in scores between consecutive stages these differences have little clinical relevance. We explicitly would discard staging systems based on only one aspect of health status in favour of assessment incorporating multiple aspects of health status.

This conclusion is not surprising, because many studies have shown that airflow obstruction (the parameter on which the GOLD stages are based) is poorly related to other pathophysiological processes, functional impairment, complaints, and quality of life. In addition, previously, we found that the 15 sub-domains of HS represented by the NIAF are relatively independent [8]. This means that scores on a particular sub-domain, such as airflow, do not predict scores on other sub-domains.

Some methodological considerations should be discussed. First, we focused on patients with GOLD stages 2 and 3, as these patients constitute the most part of patients seen in medical care, and because in a previous study it was shown that GOLD stages discriminated in aspects of health status between these stages, and not between other consecutive stages [6]. Second, we excluded primary co-morbidity to exclude its confounding effect, which was reported in a study on the relationship between ATS classification and health status [28]. In that study, also a relationship between disease stage and the SGRQ was found. This relationship was most pronounced in patients without co-morbidity. Thus, if any differences between GOLD stages are present, these would have been found in the present sample where co-morbidity was excluded.

The present findings have important implications for clinical practice and research. The GOLD classification was designed to create more homogeneous subgroups for research purposes, and it was expected that this classification could guide diagnosis and treatment of COPD [1, 2]. Our findings show that GOLD staging is only clinically meaning-

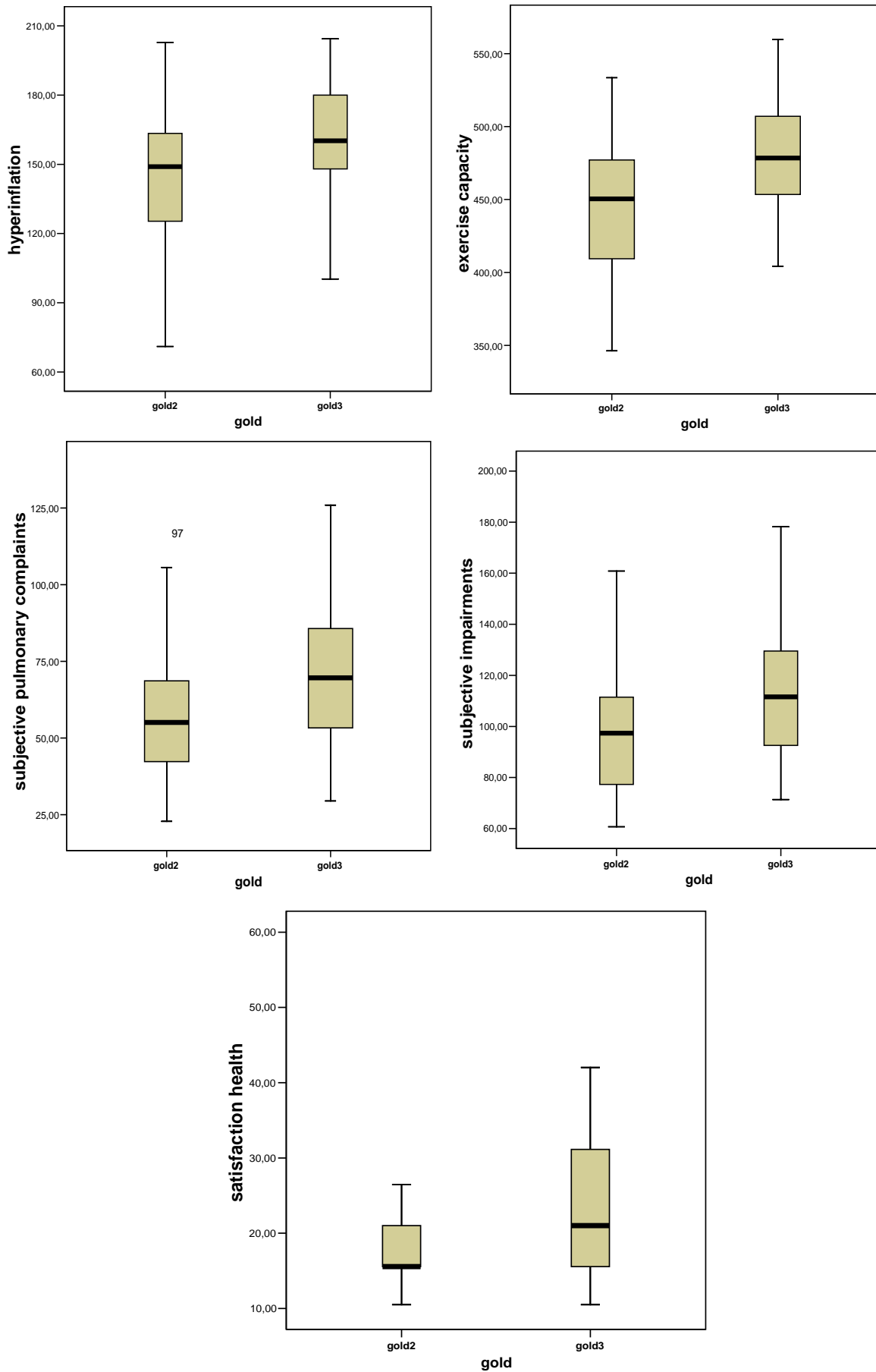


Fig. (2). Box plots of Sub-domainTotalScores (y-axis) which were significant in t-test, split by GOLD stage (x-axis).

**Table 4. Pearson Correlations of Subdomains of Health Status (HS) Main Domains Physiological Functioning, Complaints, Functional Impairment, and Quality of Life (QoL) with FEV<sub>1</sub>% Predicted and p-Value**

Sub-Domains of Main Domains	Pearson Corr. with FEV <sub>1</sub> % pred.	p-Value
<i>Main domain Physiological Functioning</i>		
Airflow	-.88	<0.001
Static Lung Volumes	-.22	.011
Exercise Capacity	-.41	<.001
Gas Exchange:		
$\Delta (A-a)_{\text{pO}_2}$	-.16	.068
$\Delta \text{PaCO}_2$	-.27	.002
Muscle Strength	-.03	.755
Body Composition	-.20	.018
<i>Main domain Complaints</i>		
Subjective	-.20	.019
Dyspnoea Emotions	-.05	.607
Dyspnoea Expected	-.13	.144
<i>Main domain Functional Impairment</i>		
Actual Physical Activity	-.08	.371
Behavioural	-.16	.065
Subjective	-.19	.032
<i>Main domain Quality of Life</i>		
General Quality of Life	-.02	.835
Health-Related QoL	-.18	.042
Satisfaction with relationships	.02	.850

ful with respect to airway obstruction, but not to any other aspect of health status, such as other physiological processes, complaints, functional impairment in daily life, and quality of life. The relative independence of the different subdomains of health status implies that treatment directed at only one aspect of HS, for example airflow obstruction, does not result in improvement in other aspects. Integral diagnosis, treatment, and management of COPD therefore should go beyond staging and management of airway obstruction alone, and should include additional and specific interventions aimed at improving other aspects of health status as well. In order to tailor treatment to the needs of an individual patient, GOLD staging proves to be inadequate. What is needed is an integral assessment of all aspects of health status.

The key characteristic of the NIAF is that multiple, and relatively unique aspects of health status are integrated, which produces a more complete picture of the patient with COPD. The recently developed BODE index also is an approach in which different aspects of COPD are combined to yield a more complete picture of the patient. The BODE index (Body Mass Index, airway obstruction, dyspnoea, and exercise capacity) significantly better predicted mortality [30] and hospitalization [31], as compared to FEV<sub>1</sub> alone. The difference between the BODE index and the NIAF is,

that the former combines the different aspects into a single parameter. The NIAF, in contrast, produces 15 different scores. In clinical practice, this has the advantage of obtaining a detailed picture of an individual patient, with respect to which aspects of health status are problematic, and which aspects are not. This enables the clinician to fine-tune treatment to the needs of an individual patient.

In conclusion, GOLD staging only has clinical relevance with respect to airflow obstruction, and not to any other subdomain of HS. Therefore, the GOLD classification system is not useful in guiding treatment and management of COPD. Integral assessment of different aspects of health status is needed. The NIAF provides clinicians with a detailed picture of the patient's health status, and therefore a guide to tailor treatment to the needs of the individual patient.

#### ACKNOWLEDGEMENTS

We are indebted to Dr. F van den Elshout (pulmonologist, Rijnstate Hospital, Arnhem) and Dr. R Bunnik (pulmonologist, Maas Hospital, Boxmeer) for their contribution in the patient recruitment. The study was supported by grants of the Dutch Asthma Foundation, GlaxoSmithKline, and the Department of Medical Psychology and the Department of Pulmonary Diseases, Radboud University Nijmegen Medical Centre.



## Appendix 1

List of instruments used to measure the HS main domains and sub-domains with description of included subscales.

Main domain (bold) Sub-domains (plain)	Parameters	
<b>Physiological Functioning</b>		
Airflow Hyperinflation Exercise capacity Gas Exchange  Muscle Force Body Composition	FEV <sub>1</sub> %, MEF50%, VE% TLC%, RV% V <sub>O2</sub> %, TLCO%, BE-Delta, HRmax% $\Delta (A-a)_{DO_2}$ $\Delta Pa_{CO_2}$ Pi max %, Pe max %, Leg force % BMI kg/m <sup>2</sup> , FFMI kg/m <sup>2</sup>	
	Instrument	Subscale
<b>Complaints</b>		
Subjective Pulmonary Complaints	Physical activity rating scale- Dyspnoea  Dyspnoea Emotions Questionnaire Quality of Life for Respiratory Illness questionnaire	global activities global burden specific activities dyspnoea subjective breathing problems
Dyspnoea Emotions	Dyspnoea Emotions Questionnaire	frustration mood anxiety
Expected Dyspnoea	Physical activity rating scale- Dyspnoea	expected dyspnoea
<b>Functional impairment</b>		
Actual physical activity	Accelerometer	
Behavioural impairment	Sickness impact profile	body care & move- ments home management mobility ambulation
Subjective impairment	Quality of Life for Respiratory Illness questionnaire Global Impairment Sickness impact profile	general activities social activities total burden social interaction
<b>Quality of life</b>		
General QoL	Satisfaction With Life Scale Symptom Checklist Beck Depression Inventory	total anxiety primary care
Satisfaction Health	Satisfaction-Physical Satisfaction-Future	
Satisfaction Relations	Satisfaction-Spouse Satisfaction-Social	

## REFERENCES

- [1] Pauwels RA, Buist AS, Calverley PM, Jenkins CR, Hurd SS. Global strategy for the diagnosis, management, and prevention of chronic obstructive pulmonary disease. NHLBI/WHO Global Initiative for Chronic Obstructive Lung Disease (GOLD) Workshop summary. *Am J Respir Crit Care Med* 2001; 163(5): 1256-76.
- [2] Celli BR, MacNee W. Standards for the diagnosis and treatment of patients with COPD: a summary of the ATS/ERS position paper. *Eur Respir J* 2004; 23(6): 932-46.
- [3] Bowling A. Health-related quality of life: Conceptual meaning, use and measurement. *Measuring Disease: A review of disease-specific quality of life measurement scales*. Second ed. Buckingham - Philadelphia: Open University Press; 2001.
- [4] Taillefer M, Dupuis G, Roberge M, Le May S. Health-related quality of life models: Systematic review of the literature. *Soc Indic Res* 2003; 64: 293-323.
- [5] Wilson IB, Cleary PD. Linking clinical variables with health-related quality of life. A conceptual model of patient outcomes. *JAMA* 1995; 273(1): 59-65.
- [6] Antonelli-Inc, Imperiale C, Bellia V, *et al*. Do GOLD stages of COPD severity really correspond to differences in health status? *Eur Respir J* 2003; 22(3): 444-9.
- [7] Tsumakidou M, Tzanakis N, Voulgaraki O, *et al*. Is there any correlation between the ATS, BTS, ERS and GOLD COPD's severity scales and the frequency of hospital admissions? *Respir Med* 2004; 98(2): 178-183.
- [8] Vercoulen JH, Daudey LD, Molema J, *et al*. An Integral Assessment Framework of Health Status in Chronic Obstructive Pulmonary Disease (COPD). *Int J Behav Med* 2008; 15: 263-79.
- [9] Vercoulen JHMM, Bazelmans E, Swanink CMA, *et al*. Physical activity in chronic fatigue syndrome: assessment and its role in fatigue. *J Psychiat Res* 1997; 31(6): 661-73.
- [10] Maillé AR, Koning CJ, Zwinderman AH, Willems LN, Dijkman JH, Kaptein AA. The development of the 'Quality-of-life for Respiratory Illness Questionnaire (QOL-RIQ)': a disease-specific quality-of-life questionnaire for patients with mild to moderate chronic non-specific lung disease. *Respir Med* 1997; 91(5): 297-309.
- [11] Bergner M, Bobbitt RA, Carter WB, Gilson BS. The Sickness Impact Profile: development and final revision of a health status measure. *Med Care* 1981; 19(8): 787-805.
- [12] Jacobs HM, Luttik A, Touw-Otten FWMM, De Melker RA. De 'sickness impact profile': resultaten van een valideringsonderzoek van de Nederlandse versie. *Ned Tijdschr Geneesk* 1990; 134(40): 1950-4.
- [13] Diener E, Emmons RA, Larsen RJ, Griffin S. The satisfaction with life scale. *J Pers Assess* 1985; 49(1): 71-5.
- [14] Arrindell WA, Heesink J, Feij JA. The Satisfaction With Life Scale (SWLS): appraisal with 1700 healthy young adults in The Netherlands. *Pers Individ Diff* 1999; 26: 815-26.
- [15] Arrindell WA, Ettema JHM. SCL-90: Handleiding bij een multidimensionale psychopathologie-indicator. Lisse: Swets & Zeitlinger 1986.
- [16] Beck AT, Guth D, Steer RA, Ball R. Screening for major depression disorders in medical inpatients with the Beck Depression Inventory for Primary Care. *Behav Res Ther* 1997; 35(8): 785-91.
- [17] Cullen DL. Measures of functional status and quality of life in chronic pulmonary disease. *Monaldi Arch Chest Dis* 1999; 54(2): 183-5.
- [18] Curtis JR, Deyo RA, Hudson LD. Pulmonary rehabilitation in chronic respiratory insufficiency. 7. Health-related quality of life among patients with chronic obstructive pulmonary disease. *Thorax* 1994; 49(2): 162-70.
- [19] Schols AM, Mostert R, Soeters PB, Wouters EF. Body composition and exercise performance in patients with chronic obstructive pulmonary disease. *Thorax* 1991; 46(10): 695-9.
- [20] Heijdra YF, Pinto-Plata V, Frants R, Rassulo J, Kenney L, Celli BR. Muscle strength and exercise kinetics in COPD patients with a normal fat-free mass index are comparable to control subjects. *Chest* 2003; 124(1): 75-82.
- [21] Hajiro T, Nishimura K, Tsukino M, Ikeda A, Oga T, Izumi T. A comparison of the level of dyspnea vs disease severity in indicating the health-related quality of life of patients with COPD. *Chest* 1999; 116(6): 1632-7.
- [22] ZuWallack RL, Haggerty MC, Jones P. Clinically meaningful outcomes in patients with chronic obstructive pulmonary disease. *Am J Med* 2004; 20; 117 Suppl 12A: 49S-59S.
- [23] Moody L, McCormick K, Williams A. Disease and symptom severity, functional status, and quality of life in chronic bronchitis and emphysema (CBE). *J Behav Med* 1990; 13(3): 297-306.
- [24] Gonzalez E, Herrejon A, Inchaurrega I, Blanquer R. Determinants of health-related quality of life inpatients with pulmonary emphysema. *Respir Med* 2005; 99(5): 638-44.
- [25] Wijnhoven HA, Kriegsman DM, Hesselink AE, Penninx BW, de Haan M. Determinants of different dimensions of disease severity in asthma and COPD: pulmonary function and health-related quality of life. *Chest* 2001; 119(4): 1034-42.
- [26] Schlecht NF, Schwartzman K, Bourbeau J. Dyspnea as clinical indicator in patients with chronic obstructive pulmonary disease. *Chron Respir Dis* 2005; 2(4): 183-91.
- [27] Rutten-van Molken MP, Oostenbrink JB, Tashkin DP, Burkhart D, Monz BU. Does quality of life of COPD patients as measured by the generic EuroQol five-dimension questionnaire differentiate between COPD severity stages? *Chest* 2006; 130(4): 1117-28.
- [28] Ferrer M, Alonso J, Morera J, *et al*. Chronic obstructive pulmonary disease stage and health-related quality of life. The Quality of Life of Chronic Obstructive Pulmonary Disease Study Group. *Ann Intern Med* 1997; 127(12): 1072-9.
- [29] Hajiro T, Nishimura K, Tsukino M, Ikeda A, Oga T. Stages of disease severity and factors that affect the health status of patients with chronic obstructive pulmonary disease. *Respir Med* 2000; 94(9): 841-6.
- [30] Celli BR, Cote CG, Marin JM, *et al*. The body-mass index, airflow obstruction, dyspnea, and exercise capacity index in chronic obstructive pulmonary disease. *N Engl J Med* 2004; 350(10): 1005-12.
- [31] Ong KC, Earnest A, Lu SJ. A multidimensional grading system (BODE index) as predictor of hospitalization for COPD. *Chest* 2005; 128(6): 3810-16.

Received: November 24, 2008

Revised: December 14, 2008

Accepted: January 2, 2009

© Verhage *et al.*; Licensee Bentham Open.This is an open access article licensed under the terms of the Creative Commons Attribution Non-Commercial License (<http://creativecommons.org/licenses/by-nc/3.0/>) which permits unrestricted, non-commercial use, distribution and reproduction in any medium, provided the work is properly cited.