

## PDF hosted at the Radboud Repository of the Radboud University Nijmegen

The following full text is a publisher's version.

For additional information about this publication click this link.

<http://hdl.handle.net/2066/49701>

Please be advised that this information was generated on 2021-09-20 and may be subject to change.

# Platelet-Rich Plasma: Quantification of Growth Factor Levels and the Effect on Growth and Differentiation of Rat Bone Marrow Cells

JULIETTE VAN DEN DOLDER, Ph.D.,<sup>1</sup> ROB MOOREN, D.D.S., M.D.,<sup>2</sup>  
ANNELIES P.G. VLOON, B.Sc.,<sup>1</sup> PAUL J.W. STOELINGA, D.D.S., M.D., Ph.D.,<sup>2</sup>  
and JOHN A. JANSEN, D.D.S., Ph.D.<sup>1</sup>

## ABSTRACT

Platelet-rich plasma (PRP) is a new application of tissue engineering and a developing area for clinicians and researchers. It is a storage vehicle of growth factors (GFs) such as platelet-derived growth factor (PDGF)-AA, -BB, -AB; transforming growth factor (TGF)- $\beta$ 1 and -2; platelet-derived epidermal growth factor (PDEGF); platelet-derived angiogenesis factor (PDAF); insulin growth factor-1 (IGF-1); and platelet factor-4 (PF-4), which are known to influence bone regeneration. However, animal and clinical studies reveal different results with the use of PRP and its effect on bone healing. This could be due to the differences between species, that is, differences between species in GF concentrations or variation in presence of GFs between the various PRPs. In this study, rat bone marrow cells were cultured in PRP-coated wells or in uncoated wells for 16 days in osteogenic medium, and analyzed on cell growth (DNA content) and cell differentiation (alkaline phosphatase [ALP] activity, calcium content, scanning electron microscopy, and QPCR). The concentrations of TGF- $\beta$ 1, PDGF-AA, PDGF-AB, and PDGF-BB in rat, goat, and human PRP were subsequently determined. The results showed that PRP stimulated initial cell growth and had no effect on ALP activity. The calcium measurements showed a significant increase in calcium at days 8, 12, and 16. The real-time PCR results showed that PRP upregulated osteocalcin at day 1 and collagen type I at day 8. Overall, the immunoassays revealed that human PRP contained higher concentrations of growth factors per platelet compared to rat and goat PRP. Goat PRP showed higher concentrations of growth factors per platelet as compared to rat PRP except for PDGF-BB, which had a higher concentration in rat PRP. TGF- $\beta$ 1 was the most abundant growth factor in all 3 PRPs. On the basis of our results, we conclude that platelet-rich plasma contains osteo-inductive growth factors, which are probably species related. However, we cannot generalize the results because of large intraspecies variations. Further, we conclude that rat PRP gel stimulates initial growth and differentiation of rat bone marrow cells *in vitro*.

## INTRODUCTION

**A**UTOLOGOUS BONE OR BONE DERIVATIVES and substitutes for jaw and periodontal reconstruction have significant limitations in terms of availability, morbidity, efficacy, immunologic reaction, and disease transmission. Therefore, tissue engineering is an alternative approach, which in-

cludes, among others, the use of a synthetic material for the delivery of osteogenic (osteoinductive) morphogens.

Platelet-rich plasma (PRP) as a storage vehicle of growth factors (GFs) is a new application of tissue engineering and a developing area for clinicians and researchers. The GFs, such as platelet-derived growth factor (PDGF [AA, BB, AB]), transforming growth factor- $\beta$ 1 and - $\beta$ 2, platelet-derived epidermal

<sup>1</sup>Department of Periodontology and Biomaterials and <sup>2</sup> Department of Oral Maxillofacial Surgery, Radboud University Nijmegen Medical Center, Nijmegen, the Netherlands.

growth factor (PDEGF), platelet-derived angiogenesis factor (PDAF), insulin growth factor-1 (IGF-1), and platelet factor-4 (PF-4) are known to influence bone regeneration. In addition, some authors have reported the presence of basic fibroblast growth factor (bFGF), epithelial cell growth factor (ECGF), interleukin-1 (cytokine), and osteonectin (major protein in mineralized bone) in the  $\alpha$ -granules of the platelets.<sup>1-4</sup> All of this implies that platelet concentrates might influence bone formation through a variety of pathways.

The effects of PRP on osteoblast lineage have been confirmed by a few *in vitro* studies. Weibrich *et al.*<sup>5</sup> observed mitogenic effects of PRP on osteoblast-like cells. Annunziata *et al.*<sup>6</sup> and Lucarelli *et al.*<sup>7</sup> showed an increase in growth and differentiation of PRP-treated periodontal ligament cells and stromal stem cells as indicated by alkaline phosphatase (ALP) activity and collagen type I gene expression. Additional studies revealed that PRP stimulated the mitogenic response of bone cells derived from human trabecular<sup>8</sup> and rat bone marrow.<sup>9</sup> Yet, it is still unknown whether the stimulatory effects of PRP is related to the GFs present or to other microparticles from the cytoplasm or cell membrane that are released from activated platelets.<sup>8</sup>

The action mechanism of GFs is very complex, because each GF may have a different effect on the signal transduction of bone matrix mineralization. GFs may also interact with each other and consequently may form a cascade of different signal proteins with multiple pathways, which will ultimately lead to activation of gene expression followed by protein production. This specific characteristic of PRP, having multiple GFs, acting on multiple pathways, distinguishes PRP from single recombinant GFs that focus on a single signal transduction pathway.<sup>10,11</sup>

However, the number of *in vitro* studies is very limited and additional questions need to be answered. For example, animal and clinical studies reveal different results with the use of PRP and its effect on bone healing. Some researchers reported an additional effect on bone regeneration by using PRP in combination with bone grafts;<sup>12,13</sup> others revealed no differences.<sup>14,15</sup> This could be due to the differences between species, that is, differences in GF concentrations between species or variation in the presence of GFs between the various PRPs.

Therefore, the aim of this study was to examine the presence and the concentrations of GFs in rat, goat, and human PRP. We examined the effect of rat PRP gel on rat bone marrow cells.

## MATERIALS AND METHODS

### PRP preparation

Rat PRP was obtained by drawing the whole blood of 4 male Wistar rats via cardiac puncture into tubes containing 3.8% sodium citrate. PRP was obtained from this anticoagulated blood after centrifugation at 800 rpm for 15 min at

25°C. Three milliliters of blood resulted in 150  $\mu$ L of PRP. The platelets present in the whole blood and in PRP were counted automatically using a hematology analyzer. The concentration of platelets obtained in the PRP was 3 times higher than the baseline. This PRP was used to obtain a PRP gel. The platelet concentrate was activated with a 10% calcium chloride solution and 300 IU of bovine thrombin. One hundred and fifty microliters of PRP was mixed with 25  $\mu$ L of thrombin (300 IU) (Fibriquik™ Thrombin, Bio-Merieux, Durham, NC) together with 25  $\mu$ L of 10% CaCl<sub>2</sub>. Goat PRP and human PRP (1 patient) were obtained from the Sanquin Bloodbank, Nijmegen, Regio Zuid-oost. The PRP fraction was obtained from venous blood of 1 goat. For this reason, 250 cm<sup>3</sup> of blood was drawn and centrifuged at a transfusion laboratory (Sanquin, Nijmegen, Netherlands) in various cycles (Clemmons *et al.*, 1983). Finally, 10–15 mL of PRP suspension was obtained. The platelet concentration was also counted (platelet count exceeding 1200  $\times$  10<sup>6</sup>/mL).

### Quantitative sandwich enzyme immunoassay

A quantitative sandwich enzyme immunoassay (Quantikine, R&D Systems Europe Ltd., Abingdon, UK) was used for examining the amount of TGF- $\beta$ 1, PDGF-AA, PDGF-AB, and PDGF-BB in rat, goat, and human PRP. The samples were activated by adding 0.1 mL of 2.5 N acetic acid/10 M urea to 0.1 mL of plasma. After 10 min of incubation at room temperature, the samples were neutralized by adding 0.1 mL 2.7 N NaOH/1 M N,N'-2-hydroxyethylpiperazine-N'-2-ethanesulfonic acid (HEPES). The immunoassays were performed following the manufacturer's instructions.

### Cell isolation

Rat bone marrow (RBM) cells were isolated and cultured using the method described by Maniopoulos *et al.*<sup>16</sup> Femora of male Wistar rats were washed in culture medium  $\alpha$ -minimum essential medium ( $\alpha$ -MEM, Gibco BRL, Life Technologies B.V. Breda, The Netherlands) with 0.5 mg/mL of gentamicin and 3  $\mu$ g/mL of Fungizone (Sigma-Aldrich, St. Louis, MO). Epiphyses were cut off and diaphyses flushed out with 15 mL of osteogenic culture medium  $\alpha$ -MEM, supplemented with 10% fetal calf serum (FCS, Gibco BRL, Life Technologies B.V. Breda, The Netherlands), 50  $\mu$ g/mL of ascorbic acid, 50  $\mu$ g/mL of gentamicin, 10 mM sodium  $\beta$ -glycerophosphate, and 10<sup>-8</sup> M dexamethasone (Sigma-Aldrich). The cells were incubated in a humidified atmosphere of 95% air, 5% CO<sub>2</sub> at 37°C for 7 days. The medium was changed every 2 or 3 days.

### Cell seeding

After 7 days of primary culture in osteogenic medium, the pre-osteoblast-like cells were harvested and seeded in 24-well plates at a concentration of 10,000 cells/well. The tissue culture polystyrene (TCPS) wells were first precoated with an PRP gel (150  $\mu$ L of PRP mixed with 25  $\mu$ L of

thrombin (300 IU) and mixed with 25  $\mu\text{L}$  of 10%  $\text{CaCl}_2$  per well) or left uncoated. Cells were cultured for 16 days in the presence of osteogenic medium and incubated in a humidified atmosphere of 95% air, 5%  $\text{CO}_2$  at 37°C. The medium was changed every 2 or 3 days.

#### *DNA analysis*

After 2, 4, 8, and 12 days samples were used for DNA analysis. Medium was removed and cell layers were washed twice with phosphate-buffered saline (PBS). One milliliter of MilliQ was added to each sample. The samples were frozen and thawed repeatedly. DNA standard curve was made with  $\lambda$  DNA. One hundred microliters of sample or standard was added to 100  $\mu\text{L}$  of Picogreen working solution (Molecular Probes, Leiden, Netherlands) and the samples were incubated for 10 min at room temperature in the dark. After incubation, DNA was measured using a fluorescence microplate reader (Bio-Tek instruments, Abcoude, Netherlands) with excitation filter 365 nm and emission filter 450 nm. The same samples were also used for the ALP activity assay.

#### *ALP activity*

ALP activity was measured at days 4, 8, and 12. For the assay (Sigma-Aldrich), 96-well plates were used. Eighty microliters of sample and 20  $\mu\text{L}$  of buffer solution (5 mM  $\text{MgCl}_2$ , 0.5 M 2-amino-2-methyl-1-propanol) were added to the wells. Subsequently, 100  $\mu\text{L}$  of substrate solution (5 mM *p*-nitrophenylphosphate) was added to the wells and the plate was incubated for 1 h at 37°C. The reaction was stopped by adding 100  $\mu\text{L}$  of stop solution (0.3 M NaOH). For the standard curve, serial dilutions of 4-nitrophenol were added to final concentrations of 0–25 nM. The plate was read in an enzyme-linked immunosorbent assay (ELISA) reader (Bio-Tek instruments, Abcoude, Netherlands) at 405 nm.

#### *Calcium content*

Calcium content in the samples was measured by the ortho-cresolphthalein complexone (OCPC) method (Sigma-Aldrich). Calcium content was examined at 8, 12, and 16 days of incubation. Cell layers were washed twice in PBS. Five hundred microliters of 0.5 N acetic acid was added to the wells and the samples were incubated overnight. Samples were frozen at  $-20^\circ\text{C}$  until use.

OCPC solution was prepared as follows: Eighty milligrams of OCPC was added to 75 mL of demineralized  $\text{H}_2\text{O}$  with 0.5 mL of 1 M KOH, 0.5 mL of 0.5 N acetic acid. To prepare sample solution, 5 mL of OCPC solution was added to 5 mL of 14.8 M ethanolamine/boric acid buffer (pH 11), 2 mL of 8-hydroxyquinoline (5 g in 100 mL of 95% ethanol), and 88 mL of demineralized water. Three hundred microliters of sample solution was added to 10  $\mu\text{L}$  of sample. To

generate a standard curve, serial dilutions of  $\text{CaCl}_2$  were made (1–200  $\mu\text{g}/\text{mL}$ ). The plate was incubated at room temperature for 10 min and then read at 575 nm.

#### *RNA isolation*

RNA was isolated from the cells with the aid of a RNA isolation kit (RNeasy kit, QIAGEN, Venlo, Netherlands). The cells were then disrupted by adding 350  $\mu\text{L}$  of RLT lysis buffer. The samples were stored at  $-70^\circ\text{C}$  until use. The immunoassays were performed following the manufacturer's instructions.

The RNA obtained was quantified by adding 1  $\mu\text{L}$  of sample to 49  $\mu\text{L}$  of RNase-free water and the absorbance was measured in a spectrophotometer (Bio-Rad Laboratories, Veenendaal, Netherlands) at 260 nm.

#### *Reverse transcriptase polymerase chain reaction (RT-PCR)*

After isolation of the RNA, the RT reaction was performed. One microgram of total RNA, 1  $\mu\text{L}$  of 100 ng of random primers, 1  $\mu\text{L}$  of dNTP mix (10 mM each), and 10  $\mu\text{L}$  of distilled water was added to a nuclease-free microcentrifuge tube. The mixture was heated to 65°C for 5 min and quickly chilled on ice. The contents of the tube were collected by brief centrifugation. Four microliters of 5 $\times$ first-strand buffer (250 mM Tris-Cl, pH 8.3; 375 mM KCl; 15 mM  $\text{MgCl}_2$ ) and 2  $\mu\text{L}$  of 0.1M dithiothreitol (DDT) were added. This was incubated at 25°C for 10 min, and the contents of the tube were mixed gently and incubated at 42°C for 2 min. Finally, 1  $\mu\text{L}$  (200 U) of Superscript II (Invitrogen, Breda, Netherlands) was added and the mixture incubated at 42°C for 50 min. The reaction was inactivated by heating the mixture at 70°C for 15 min. The obtained cDNA was used as a template in the PCR.

#### *Quantitative PCR*

The cDNA from the RT reaction was used as a template in PCR. To perform quantitative PCR, 4.5  $\mu\text{L}$  of RNase-free water, 12.5  $\mu\text{L}$  of SYBR<sup>®</sup> Green MasterMix (Eurogentec, Liege, Belgium), 5  $\mu\text{L}$  of cDNA, 1.5  $\mu\text{L}$  of reverse primer, and 1.5  $\mu\text{L}$  of forward primer were added to a QRT-PCR 96-well plate. This plate was sealed, and the Q-PCR run was performed with the MyiQ Single-Color Real-Time Detection System for quantification with SYBR Green and melting curve analysis (Bio-Rad, Richmond, CA). DNA was PCR-amplified under the following conditions: 2 min at 50°C and 10 min at 95°C, followed by 40 cycles of 15 s at 95°C and 1 min at 60°C, with data collection in the last 30 s. The reference household gene used to normalize the amount of mRNA in the cultures was GAPDH ( $\Delta C_T = C_{T,\text{gene of interest}} - C_{T,\text{GAPDH}}$  [1]). Gene expression was measured relative to the gene expression of cultures on the relevant substrates (PRP gel-coated or uncoated TCPS) that had not received antibodies,

after day 1 of culture ( $\Delta\Delta C_T = \Delta C_{T,\text{sample}} - \Delta C_{T,\text{control}}$  [2]). The fold change in gene expression relative to the control was calculated via  $2^{-\Delta\Delta C_T}$  (3).<sup>17</sup>

### Statistical analysis

This study was performed using 2 separate runs of experiments. In each run, samples were present in quadruple. In the Results section, data of both runs are described but only the first run is presented in the figures. Statistical analysis was performed for each run by using an unpaired *t*-test (GraphPad Software, San Diego, CA).

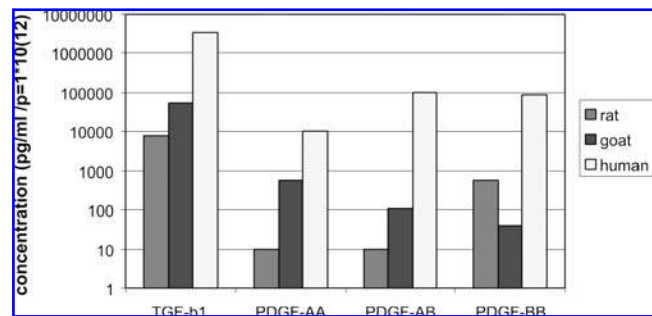
## RESULTS

### Presence and quantification of GFs in rat, goat and human PRP

The concentrations of GFs—TGF- $\beta$ 1, PDGF-AA, PDGF-BB, and PDGF-AB—in rat, goat, and human PRP were examined. Rat PRP was prepared by 1 centrifugation step and resulted in a 3-fold increase of platelets above baseline (rat PRP =  $3000 \times 10^6/\text{mL}$ ). Human and goat PRP were prepared in 2 centrifugation steps and resulted also in a 3-fold increase for goat and 6-fold increase for human in platelets above baseline (goat and human PRP =  $1200 \times 10^6/\text{mL}$ ). As shown in Table 1 and Fig. 1, various GFs were tested and different concentrations of GFs were obtained in rat, goat, and human PRP. For TGF- $\beta$ 1, 7.8 ng/mL was detected in rat PRP, 53 ng/mL was detected in goat PRP, and 2.6  $\mu\text{g}/\text{mL}$  was detected in human PRP. For PDGF-AA, 9.7 pg/mL was detected in rat PRP, 561 pg/mL was detected in goat PRP, and 7.9 ng/mL was detected in human PRP. For PDGF AB, 10 pg/mL was detected in rat PRP, 108 pg/mL was detected in goat PRP, and 76.4 ng/mL was detected in human PRP. For PDGF-BB, 590 pg/mL was detected in rat PRP, 39 pg/mL was detected in goat PRP, and 66 ng/mL was detected in human PRP.

**TABLE 1. CONCENTRATIONS OF THE GFs TGF- $\beta$ 1, PDGF-AA, -AB, AND -BB IN RAT, GOAT, AND HUMAN PRP**

Growth factor	PRP	Concentration	Concentration (pg/mL)/ $p = 1000 * 10^6$
TGF- $\beta$ 1	Rat	23.3 ng/mL	7767
	Goat	63.5 ng/mL	52,917
	Human	3.1 mg/mL	2,580,000
PDGF-AA	Rat	29.2 pg/mL	9.73
	Goat	673.5 pg/mL	561
	Human	9.5 ng/mL	7916
PDGF-AB	Rat	30.2 pg/mL	10
	Goat	129.2 pg/mL	108
	Human	91.7 ng/mL	76,417
PDGF-BB	Rat	1.77 ng/mL	590
	Goat	47 pg/mL	39
	Human	79.3 ng/mL	66,083



**FIG. 1.** Concentration of the GFs TGF- $\beta$ 1, PDGF-AA, -AB and -BB in rat, goat, and human PRP.

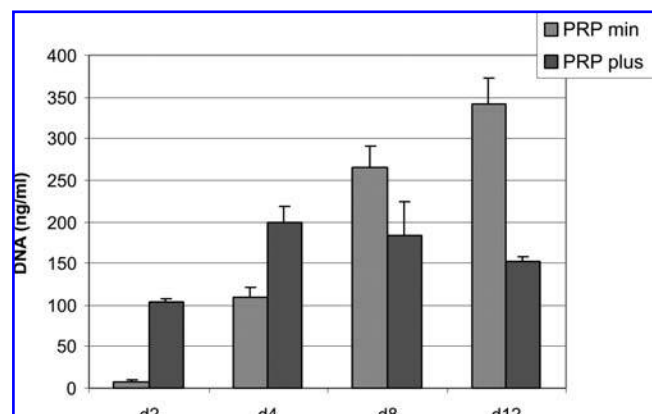
### Effect of rat PRP gel on rat bone marrow cells

The DNA results showed that PRP stimulated the initial cell growth significantly at days 2 and 4 ( $p < 0.05$ ). A linear growth curve for uncoated control samples was observed. In contrast, the coated samples showed a linear growth from day 2 to 4, a steady state from day 4 to 8, and a decrease in DNA from day 8 to 12 (Fig. 2).

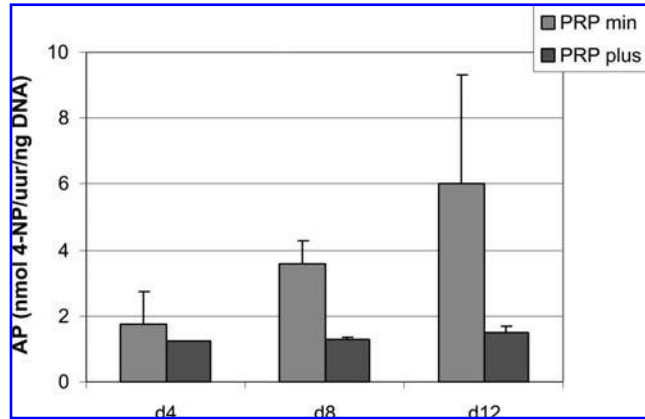
A negative effect of PRP on the ALP activity could be observed at days 4, 8, and 12. The ALP activity of the control samples showed an increase of activity from day 4 to 8 to 12 while the PRP-coated samples showed an ALP activity at a constant low level (Fig. 3).

A significant increase in calcium content was found at days 8, 12, and 16 for the samples coated with PRP compared to the uncoated samples ( $p < 0.05$ ). The uncoated samples showed only a low amount of calcium at day 16 (Fig. 4).

Real-time PCR was performed to get some additional data about the gene expression of certain osteogenic markers. The results showed that PRP downregulated ALP and bone sialoprotein at days 1 and 8. It downregulated osteocalcin at day 8 and downregulated collagen type I at day 1. However, PRP upregulated osteocalcin at day 1 and upregulated collagen type I at day 8 (Fig. 5).



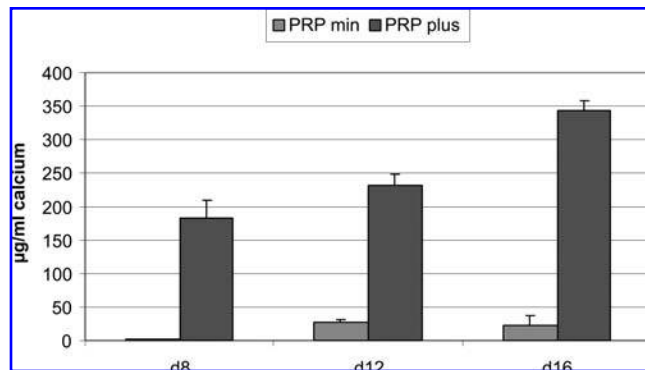
**FIG. 2.** Cell growth of rat bone marrow cells cultured on PRP-coated and noncoated wells (1st run).



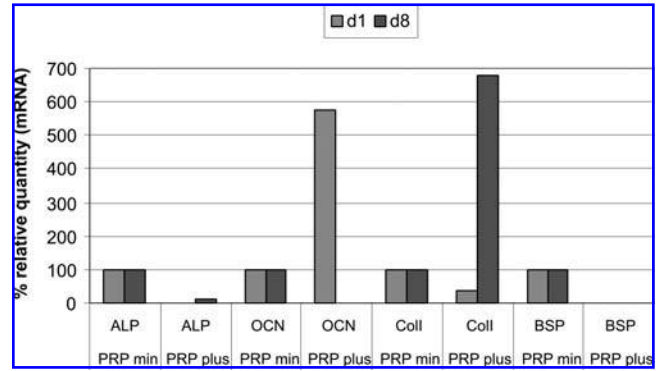
**FIG. 3.** ALP activity of rat bone marrow cells cultured on PRP-coated and noncoated wells (1st run).

**DISCUSSION**

The results of our immunoassays revealed that human PRP contained higher concentrations of GFs per platelet as compared to rat and goat PRP. Goat PRP showed also higher concentrations of GFs per platelet compared to rat PRP except for PDGF-BB, which had a higher concentration in rat PRP. TGF-β1 was the most abundant GF in all 3 PRPs. As of yet no data are available about the differences among rat, goat, and human PRP. Apart from animal studies with successful outcomes for PRP, there are also contradictory results in which no benefit of PRP was found.<sup>3,18</sup> The present results can probably explain why it is currently very difficult to obtain a beneficial effect of PRP in experimental animal studies. The PRP applied was always prepared from blood of the experimental animals, while no data were available about the amount of platelets that need to be used in the studies. This could be species-related because of the differences in concentrations of the GFs in PRPs obtained from rat, goat, and human. Only a few studies have reported on the synergistic effects of multiple GFs in a defective site.



**FIG. 4.** Calcium content of rat bone marrow cells cultured on PRP-coated and noncoated wells (1st run).



**FIG. 5.** Relative quantity of mRNA (%) of ALP (alkaline phosphatase), OCN (osteocalcin), Coll (collagen type I), and BSP (bone sialoprotein). The so-called  $2^{-\Delta\Delta CT}$  method was used to evaluate the differences in gene expression between uncoated (PRP min) and PRP-coated samples (PRP plus). All  $C_T$  values were normalized to the  $C_T$  values of the housekeeping gene GAPDH. Second, the  $\Delta C_T$  values of PRP were normalized to the  $\Delta C_T$  values of the control group, the uncoated samples. Finally, the  $2^{-\Delta\Delta CT}$  values of the control group were called 100% while the  $2^{-\Delta\Delta CT}$  values of the PRP-coated groups were multiplied by 100%.

There are still many questions to be answered before the exact mechanism of the action of PRP can be fully explained.

According to Marx *et al.*,<sup>1</sup> human PRP is an autologous concentration of human platelets above baseline in a small volume of plasma. Normal platelet counts in human blood range between  $150 \times 10^6/\text{mL}$  and  $350 \times 10^6/\text{mL}$  with an average of about  $200 \times 10^6/\text{mL}$ . A concentration of  $1000 \times 10^6/\text{mL}$  in a 5-mL volume of plasma could be the working definition of human PRP. Platelet concentrations of less than  $1000 \times 10^6/\text{mL}$  were not reliable to enhance wound healing, whereas higher concentrations did not show further enhancement of wound healing.<sup>19</sup> Weibrich *et al.*<sup>20</sup> examined the platelet concentration among different human donors and discovered that the platelet concentration of the human PRP, prepared in a blood bank, correlated with the platelet count in the donor whole blood. They found also a significant influence of gender on platelet concentration, but no influence of age. On the other hand, Paques *et al.*<sup>21</sup> demonstrated that the concentrations of the GFs present in human platelet lysates were not related to donor origin. Regarding the required platelet concentration for PRP efficiency, Haynesworth *et al.*<sup>22</sup> showed that the proliferation and differentiation of adult mesenchymal stem cells were directly related to the platelet concentration. They showed a dose-response curve indicating that a sufficient cellular response to platelet concentrations first began when a 4- to 5-fold increase over baseline platelet numbers was achieved. Platelet concentrations ranged from  $800$  to  $1200 \times 10^6$  platelets/mL have been proposed to be effective by Weibrich *et al.* and Fennis *et al.*<sup>23,24</sup> As most individuals have a baseline blood platelet count of  $200 \pm 75 \times 10^6/\text{mL}$ , a platelet count of  $1000 \times 10^6/\text{mL}$  as

measured in a volume of 5 mL plasma can be the “therapeutic dose” of PRP.<sup>2,25</sup> The PRP formulations that were used in our study had a 3-fold increase for rat and goat and a 6-fold increase for human PRP; that is, rat PRP had a concentration of  $3000 \times 10^6/\text{mL}$  (whole blood  $1000 \times 10^6/\text{mL}$ ), goat PRP had a concentration of  $1200 \times 10^6/\text{mL}$  (whole blood  $400 \times 10^6/\text{mL}$ ) and human PRP had a concentration of  $1200 \times 10^6/\text{mL}$  (whole blood  $200 \times 10^6/\text{mL}$ ).

The present study revealed that PRP had a stimulating effect on the initial cell growth and matrix mineralization of rat bone marrow cells. This is in agreement with Lucarelli *et al.*<sup>7</sup> and Weibrich *et al.*,<sup>5</sup> who also observed increased cell growth and differentiation with osteoblast-like cells and stromal cells. Soffer *et al.*<sup>26</sup> observed in a study with fetal rat calvarial cells that short-term exposure (24 h) of PRP to the cells stimulated the growth and differentiation of these cells. However, a long-term exposure resulted in a decrease in both ALP activity and mineral formation. Choi *et al.*<sup>27</sup> and Arpornmaeklong *et al.*<sup>28</sup> showed in their study that the viability and proliferation of alveolar bone cells obtained from mongrel dogs and rat bone marrow cells were suppressed by high PRP concentrations, but were stimulated by low PRP concentrations. Arpornmaeklong *et al.*<sup>28</sup> observed also that the cell differentiation of rat bone marrow cells was suppressed with a high concentration of PRP. In the present study, the well plates were coated with a PRP gel. Therefore, the cells probably experienced a short-term exposure of GFs. As known from other studies the life span of a platelet in a wound and the period of direct influence of its GFs is less than 5 days in *in vivo* situations.<sup>29</sup> After the initial burst of GFs, the platelets synthesize and secrete additional GFs for the remaining days of their life span. However, it can be questioned whether this same GF release pattern will occur in an *in vitro* situation. Tsay *et al.*<sup>30</sup> showed in their *in vitro* study that PRP gels had a burst release of 80% of PDGF-AB and 82% of TGF- $\beta$ 1 in the medium after 24 h and a sustained release for another 14 days.

Additional studies revealed that PRP stimulated the mitogenic response of bone cells derived from human trabecular<sup>8</sup> and rat bone marrow.<sup>9</sup> Yet, it is still unknown whether the stimulatory effects of PRP is related to the GFs present or to other microparticles from the cytoplasm or cell membrane that are released from activated platelets.<sup>8</sup> However, our ELISA results and also Soffer *et al.*<sup>26</sup> showed that appropriate amounts of GFs can be detected. Previous *in vitro* studies with single GFs, such as TGF- $\beta$ 1, showed already that concentrations of 5–10 ng/mL in rat bone marrow cell cultures result in increased cell proliferation with no effect on cell differentiation.<sup>31</sup> Other authors reported that the single GFs PDGF-AA and BB enhanced cell proliferation of bone cells (10 ng/mL)<sup>10,32,33</sup> Antibodies against PDGF appeared to decrease the mitogenic activity of human bone cells with PRP.<sup>8</sup>

Real-time PCR results showed a downregulation for the ALP gene when PRP was used as the coating. This is in keeping with our ALP activity results, which showed a de-

crease in activity with PRP, while more calcium content was measured with PRP-coated samples. In accordance with the calcium results, the PCR results showed an upregulation for the genes osteocalcin (as a marker for the osteoblast phenotype) and collagen type I (as a marker for matrix mineralization).

The present study also contains some limitations. Rat PRP was obtained from 6 rats and was used for rat bone marrow cell culture and GF quantification, but the human and goat PRP samples for GF quantification were taken from 1 patient or 1 animal. Therefore, we cannot generalize the results obtained from GF quantification because of the large intraspecies variations.

## CONCLUSION

On the basis of our results, we conclude that PRP contains osteo-inductive GFs, which are probably species related. However, we cannot generalize the results because of the large intraspecies variations. Further, we conclude that rat PRP gel stimulates the initial growth and differentiation of rat bone marrow cells *in vitro*. Evidently, PRP has the potential to be an osteoinductive factor for GF-based tissue engineering.

## ACKNOWLEDGMENTS

This research was financially supported by a VENI grant (NGT6052) of the Dutch Technology Foundation (STW), applied science division of now, and the technology program of the Ministry of Economic Affairs.

We would like to thank the following persons for their contributions to this article: Cees Verhagen and Joyce Curvers, Sanquin Bloodbank, Regio Zuid-Oost, Nijmegen for providing us goat and human PRP and Dolf Lubbers, Department of Hematology, UMC Nijmegen for counting the platelets with a hematology analyzer (Advia 120, Bayer B.V., Mijdrecht, Netherlands).

## REFERENCES

1. Marx, R.E., Carlson, E.R., Eichstaedt, R.M., Schimmele, S.R., Strauss, J.E., and Georgeff, K.R. Platelet rich plasma. *Oral Surg. Oral Med. Oral Pathol.* **85**, 638, 1998.
2. Marx, R.E. Platelet-rich plasma: evidence to support its use. *J. Oral Maxillofac. Surg.* **62**, 489, 2004.
3. Aghaloo, T.L., Moy, P.K., and Freymiller, E.G. Investigation of platelet-rich plasma in rabbit cranial defects: a pilot study. *J. Oral Maxillofac. Surg.* **60**, 1176, 2002.
4. Tözüm, T.F., and Demirapl, B. Platelet-rich plasma: a promising innovation in dentistry. *J. Can. Dent. Assoc.* **69**, 664, 2003.
5. Weibrich, G., Gnoth, S.H., Otto, M., and Wagner, W. Wachstumstimulation von humanen osteoblastenähnlichen zellen

- durch thrombozytenkonzentrate in vitro. Mund. Kiefer. Ge-  
sichts. Chir. **6**, 168, 2002.
6. Annunziata, M., Oliva, A., Buonaiuto, C., Di Feo, A., Di Pasquale, R., Passaro, I., and Guida L. In vitro cell-type specific biological response of human periodontally related cells to platelet-rich plasma. *J. Periodont. Res.* **1**, 2005.
  7. Lucarelli, E., Beccheroni, A., Donati, D., Sangiorgio, L., Cenacchi, A., Del Vento, A.M., Meotti, C., Zambon Bertoja, A., Giardino, R., Fornasari, P.M., Mercuri, M., and Picci, P. Platelet-derived growth factors enhance proliferation of human stromal stem cells. *Biomaterials* **24**, 3095, 2003.
  8. Gruber, R., Varga, F., Fischer, M.B., and Watzek, G. Platelets stimulate proliferation of bone cells: involvement of platelet-derived growth factor, microparticles and membranes. *Clin. Oral Impl. Res.* **13**, 529, 2002.
  9. Oprea, W.E., Karp, J.M., Hosseini, M.M., and Davies, J.E. Effect of platelet releasate on bone cell migration and recruitment in vitro. *J. Craniofac. Surg.* **14**, 292, 2003.
  10. Davidai, G., Lee, A., Schwartz, I., and Hazum, E. PDGF induces tyrosine phosphorylation in osteoblast-like cells: relevance to mitogenesis. *Am. J. Physiol. Endocrinol. Metab.* **263**, E205, 1992.
  11. Sandy, J., Davies, M., Prime, S., and Farndale, R. Signal pathways that transduce growth factor-stimulated mitogenesis in bone cells. *Bone* **23**, 17, 1998.
  12. Ohva, M., Yamada, Y., Ozawa, R., Ito, K., Takahashi, M., and Ueda, M. Sinus floor elevation applied tissue-engineered bone. Comparative study between mesenchymal stem cells/platelet rich plasma (PRP) and autogenous bone with PRP complexes in rabbits. *Clin. Oral Impl. Res.* **16**, 622, 2005.
  13. Mendonca-Caridad, J.J., Juiz-Lopez, P., and Rubio-Rodriguez, J.P. Frontal sinus obliteration and craniofacial reconstruction with platelet rich plasma in a patient with fibrous dysplasia. *Int. J. Oral Maxillofac. Surg.* **35**, 88, 2006.
  14. Sanchez, A.R., Eckert, S.E., Sheridan, P.J., and Weaver, A.L. Influence of platelet rich plasma added to xenogeneic bone grafts on bone mineral density associated with dental implants. *Int. J. Oral Maxillofac. Impl.* **20**, 526, 2005.
  15. Thor, A., Wannfors, K., Sennerby, L., and Rasmusson, L. Reconstruction of the severely resorbed maxilla with autogenous bone, platelet rich plasma, and implants: 1-year results of a controlled prospective 5-year study. *Clin. Impl. Dent. Relat. Res.* **7**, 209, 2005
  16. Maniopoulos, C., Sodek, J., and Melcher, A.H. Bone formation in vitro by stromal cells obtained from bone marrow of young adult rats. *Cell Tissue Res.* **254**, 317, 1988.
  17. Livak, K.J., and Schmittgen, T.D. Analysis of relative gene expression data using real-time quantitative PCR and the  $2^{-\Delta\Delta Ct}$  method. *Methods* **25**, 402, 2001.
  18. Landesberg, R., Roy, M., and Glickman, R.S. Quantification of growth factors levels using a simplified method of platelet rich plasma gel preparation. *J. Oral Maxillofac. Surg.* **58**, 297, 2000.
  19. Marx, R.E. Platelet-rich plasma (PRP): what is PRP and what is not PRP? *Impl. Dent.* **10**, 225, 2001.
  20. Weibrich, G., Kleis, W.K.G., Kunz-Kostomanolaki, M., Loos, A.H., and Wagner, W. Correlation of platelet concentration in platelet rich plasma to the extraction method, age, sex, and platelet count of donor. *Int. J. Oral Maxillofac. Impl.* **16**, 693, 2001.
  21. Paques, M., Chastang, C., Mathis, A., Sahel, J., Massin, P., Dosquet, C., Korobelnik, J.F., Le Gargasson, J.F., and Gaudric, A. Effect of autologous platelet concentrate in surgery for idiopathic macular hole: results of a multicenter, double-masked, randomized trial. Platelets in Macular Hole Surgery Group. *Ophthalmology* **106**, 932, 1999.
  22. Haynesworth, S.E., Kadiyala, S., Liang, L.N., *et al.* Mitogenic stimulation of human mesenchymal stem cells by platelet release suggest a mechanism for enhancement of bone repair by platelet concentrates. Presented at the 48th Meeting of the Orthopedic Research Society, Boston, MA, 2002.
  23. Weibrich, G., Hansen, T., Kleis, W., Buch, R., and Hitzler, W.E. Effect of platelet concentration in platelet-rich plasma on peri-implant bone regeneration. *Bone* **34**, 665, 2004.
  24. Fennis, J.P.M., Stoelinga, P.J.W., and Jansen, J.A. Reconstruction of the mandible with an autogenous irradiated cortical scaffold, autogenous corticocancellous bone-graft and autogenous platelet-rich plasma: an animal experiment. *Int. J. Oral Maxillofac. Surg.* **34**, 158, 2005.
  25. Landesberg, R., Roy, M., and Glickman, R.S. Quantification of growth factors levels using a simplified method of platelet rich plasma gel preparation. *J. Oral Maxillofac. Surg.* **58**, 297, 2000.
  26. Soffer, E., Ouhayoun, J.P., Dosquet, C., Meunier, A., and Anagnostou, F. Effects of platelet lysates on select bone cell functions. *Clin. Oral Impl. Res.* **15**, 581, 2004.
  27. Choi, B.H., Zhu, S.J., Kim, B.Y., Huh, J.Y., Lee, S.H., and Jung, J.H. Effect of platelet-rich plasma (PRP) on the viability and proliferation of alveolar bone cells: an in vitro study. *Int. J. Oral Maxillofac. Surg.* **34**, 420, 2005.
  28. Arpornmaeklong, P., Kochel, M., Depprich, R., Kubler, N.R., and Wurzler, K.K. Influence of platelet-rich plasma (PRP) on osteogenic differentiation of rat bone marrow stromal cells. An in vitro study. *Int. J. Oral Maxillofac. Surg.* **33**, 60, 2004.
  29. Choi, B.H., Im, C.J., Huh, J.Y., Suh, J.J., and Lee, S.H. Effect of platelet-rich plasma (PRP) on bone regeneration in autogenous bone graft. *Int. J. Oral Maxillofac. Surg.* **33**, 56, 2004.
  30. Tsay, R.C., Vo, J., Burke, A., Eisig, S.B., Lu, H.H., and Landesberg, R. Differential growth factor retention by platelet-rich plasma composites. *J. Oral Maxillofac. Surg.* **63**, 521, 2005.
  31. Lu, L., Yaszemski, M.J., and Mikos, A.G. TGF- $\beta$ 1 release from biodegradable polymer microparticles: its effect on marrow stromal osteoblast function. *J. Bone Joint Surg.* **83**, S82, 2005.
  32. Hock, J.M., and Canalis, E. Platelet-derived growth factor enhances bone cell replication but not differentiated function of osteoblasts. *Endocrinology* **134**, 1423, 1994.
  33. Yang, D., Cheng, J., Jing, Z., and Jin, D. Platelet-derived growth factor (PDGF)-AA: a self-imposed cytokine in the proliferation of human fetal osteoblasts. *Cytokine* **12**, 1271, 2000.

Address reprint requests to:

Juliette van den Dolder, Ph.D.  
Radboud University Nijmegen Medical Center  
Department of Periodontology & Biomaterials  
P.O. Box 9101  
6500 HB Nijmegen, the Netherlands

E-mail: j.vandendolder@dent.umcn.nl





**This article has been cited by:**

1. Seung Han Shin, Jeong Joon Yoo, Ha Na Kim, Jinwoo Nam, Hee Joong Kim. 2012. Enhanced Cellular Responses of Human Bone Marrow Stromal Cells Cultured on Pretreated Surface with Allogenic Platelet-Rich Plasma. *Connective Tissue Research* **53**:4, 318-326. [[CrossRef](#)]
2. Bo Chen, Hai-Hua Sun, Han-Guo Wang, Hui Kong, Fa-Ming Chen, Qing Yu. 2012. The effects of human platelet lysate on dental pulp stem cells derived from impacted human third molars. *Biomaterials* **33**:20, 5023-5035. [[CrossRef](#)]
3. Matthew B. Murphy, Daniel Blashki, Rachel M. Buchanan, Iman K. Yazdi, Mauro Ferrari, Paul J. Simmons, Ennio Tasciotti. 2012. Adult and umbilical cord blood-derived platelet-rich plasma for mesenchymal stem cell proliferation, chemotaxis, and cryo-preservation. *Biomaterials* **33**:21, 5308-5316. [[CrossRef](#)]
4. Premjit Arpornmaeklong, Prisana Pripatnanont, Winai Kittidumkerng, Winyou Mitarnun. 2012. Effects of autogenous growth factors on heterotopic bone formation of osteogenic cells in small animal model. *Journal of Cranio-Maxillofacial Surgery* **40**:4, 332-340. [[CrossRef](#)]
5. P. Somers, L. Robyns, E. Nollet, F. Somer, M. Cornelissen, H. Thierens, G. Nooten. 2012. Platelet gel supernatant as a potential tool to repopulate acellular heart valves. *Cell Proliferation* n/a-n/a. [[CrossRef](#)]
6. Vítor E. Santo, Ana Rita C. Duarte, Elena G. Popa, Manuela E. Gomes, João F. Mano, Rui L. Reis. 2012. Enhancement of osteogenic differentiation of human adipose derived stem cells by the controlled release of platelet lysates from hybrid scaffolds produced by supercritical fluid foaming. *Journal of Controlled Release* . [[CrossRef](#)]
7. J. Alsousou, A. Ali, K. Willett, P. Harrison. 2012. The role of platelet-rich plasma in tissue regeneration. *Platelets* 1-10. [[CrossRef](#)]
8. Hye-Rim Lee, Kyung Min Park, Yoon Ki Joung, Ki Dong Park, Sun Hee Do. 2012. Platelet-rich plasma loaded hydrogel scaffold enhances chondrogenic differentiation and maturation with up-regulation of CB1 and CB2. *Journal of Controlled Release* **159**:3, 332-337. [[CrossRef](#)]
9. William P. Clafshenkel, James L. Rutkowski, Rachele N. Palchesko, Jared D. Romeo, Ken A. McGowan, Ellen S. Gawalt, Paula A. Witt-Enderby. 2012. A Novel Calcium Aluminate-Melatonin Scaffold Enhances Bone Regeneration Within A Calvarial Defect. *Journal of Pineal Research* no-no. [[CrossRef](#)]
10. Stefan Hübner, Athina Efthymiadis. 2012. Recent progress in histochemistry and cell biology. *Histochemistry and Cell Biology* . [[CrossRef](#)]
11. Zhiwei Dong, Bei Li, Bin Liu, Shizhu Bai, Guoquan Li, Ao Ding, Jinlong Zhao, Yanpu Liu. 2012. Platelet-Rich Plasma Promotes Angiogenesis of Prefabricated Vascularized Bone Graft. *Journal of Oral and Maxillofacial Surgery* . [[CrossRef](#)]
12. Seung Han Shin, Jeong Joon Yoo, Ha Na Kim, Jinwoo Nam, Hee Joong Kim. 2012. Enhanced Cellular Responses of Human Bone Marrow Stromal Cells Cultured on Pre-treated Surface with Allogenic Platelet-rich Plasma. *Connective Tissue Research* 120119100011003. [[CrossRef](#)]
13. Nesrine Ben Azouna, Faouzi Jenhani, Zohra Regaya, Lamia Berrais, Tarek Ben Othman, Elfi Ducroq, Jorge Domenech. 2012. Phenotypical and functional characteristics of mesenchymal stem cells from bone marrow: comparison of culture using different media supplemented with human platelet lysate or fetal bovine serum. *Stem Cell Research & Therapy* **3**:1, 6. [[CrossRef](#)]
14. Hye-Rim Lee, Kyung Min Park, Yoon Ki Joung, Ki Dong Park, Sun Hee Do. 2012. Platelet-rich plasma loaded in situ-formed hydrogel enhances hyaline cartilage regeneration by CB1 upregulation. *Journal of Biomedical Materials Research Part A* n/a-n/a. [[CrossRef](#)]
15. Yoichi Yamada, Sayaka Nakamura, Minoru Ueda, Kenji Ito. 2011. Osteotome technique with injectable tissue-engineered bone and simultaneous implant placement by cell therapy. *Clinical Oral Implants Research* n/a-n/a. [[CrossRef](#)]
16. Chieh-Fang Cheng, Divya Sahu, Fred Tsen, Zhengwei Zhao, Jianhua Fan, Rosie Kim, Xinyi Wang, Kathryn O'Brien, Yong Li, Yuting Kuang, Mei Chen, David T. Woodley, Wei Li. 2011. A fragment of secreted Hsp90 $\alpha$  carries properties that enable it to accelerate effectively both acute and diabetic wound healing in mice. *Journal of Clinical Investigation* . [[CrossRef](#)]
17. Vijayendran Govindasamy, Veronica Sainik Ronald, Aimi Naim Binti Abdullah, Kavitha R. Ganesan Nathan, Zeti Adura Che Abdul Aziz, Mariam Abdullah, Rosnah Binti Zain, Noor Hayaty Abu Kasim, Sabri Musa, Ramesh R. Bhonde. 2011. Human platelet lysate permits scale-up of dental pulp stromal cells for clinical applications. *Cytotherapy* 1-13. [[CrossRef](#)]
18. Wei Wu , Robert Allen , Jin Gao , Yadong Wang . 2011. Artificial Niche Combining Elastomeric Substrate and Platelets Guides Vascular Differentiation of Bone Marrow Mononuclear Cells. *Tissue Engineering Part A* **17**:15-16, 1979-1992. [[Abstract](#)] [[Full Text HTML](#)] [[Full Text PDF](#)] [[Full Text PDF with Links](#)] [[Supplemental material](#)]

19. Luciana Reichert da Silva Assunção, Renato Colenci, Caril Constante Ferreira do-Amaral, Celso Koogi Sonoda, Suely Regina Mogami Bomfim, Roberta Okamoto, Marjorie de Assis Golim, Elenice Deffune, Célio Percinoto, Sandra Helena Penha de Oliveira. 2011. Periodontal Tissue Engineering After Tooth Replantation. *Journal of Periodontology* **82**:5, 758-766. [[CrossRef](#)]
20. M. Tohidnezhad, D. Varoga, C. J. Wruck, L. O. Brandenburg, A. Seekamp, M. Shakibaei, T. T. Sönmez, Thomas Pufe, S. Lippross. 2011. Platelet-released growth factors can accelerate tenocyte proliferation and activate the anti-oxidant response element. *Histochemistry and Cell Biology* **135**:5, 453-460. [[CrossRef](#)]
21. Jianmin Duan, Wei Kuang, Jiali Tan, Hongtao Li, Yi Zhang, Kikuchi Hirotsuka, Katayama Tadashi. 2011. Differential effects of platelet rich plasma and washed platelets on the proliferation of mouse MSC cells. *Molecular Biology Reports* **38**:4, 2485-2490. [[CrossRef](#)]
22. Lucia Formigli, Susanna Benvenuti, Raffaella Mercatelli, Franco Quercioli, Alessia Tani, Carlo Mirabella, Aida Dama, Riccardo Saccardi, Benedetta Mazzanti, Ilaria Cellai, Sandra Zecchi-Orlandini. 2011. Dermal matrix scaffold engineered with adult mesenchymal stem cells and platelet-rich plasma as a potential tool for tissue repair and regeneration. *Journal of Tissue Engineering and Regenerative Medicine* n/a-n/a. [[CrossRef](#)]
23. Sebastian Lippross, Markus Loibl, Sven Hoppe, Thomas Meury, Lorin Benneker, Mauro Alini, Sophie Verrier. 2010. Platelet released growth factors boost expansion of bone marrow derived CD34 + and CD133 + endothelial progenitor cells for autologous grafting. *Platelets* 1-11. [[CrossRef](#)]
24. Ryushiro Yamaguchi, Hideo Terashima, Satoshi Yoneyama, Sosuke Tadano, Nobuhiro Ohkohchi. 2010. Effects of Platelet-Rich Plasma on Intestinal Anastomotic Healing in Rats: PRP Concentration is a Key Factor. *Journal of Surgical Research* . [[CrossRef](#)]
25. Oscar Ares, Ramon Cugat. 2010. Biological Repair of Knee Injuries in Soccer Players. *Techniques in Knee Surgery* **9**:3, 132-138. [[CrossRef](#)]
26. Yong Feng, Yuan Sun, Weitao Jia, Changqing Zhang. 2010. Platelet-rich plasma and 1,25(OH)<sub>2</sub> vitamin D<sub>3</sub> synergistically stimulate osteogenic differentiation of adult human mesenchymal stem cells. *Biotechnology Letters* **32**:5, 635-642. [[CrossRef](#)]
27. Elisabetta Cenni, Lucia Savarino, Francesca Perut, Caterina Fotia, Sofia Avnet, Giacomo Sabbioni. 2010. Background and rationale of platelet gel in orthopaedic surgery. *MUSCULOSKELETAL SURGERY* **94**:1, 1-8. [[CrossRef](#)]
28. Kumi Sumiyoshi, Satoshi Kubota, Rika A. Furuta, Kazuta Yasui, Eriko Aoyama, Harumi Kawaki, Kazumi Kawata, Toshihiro Ohgawara, Takashi Yamashiro, Masaharu Takigawa. 2010. Thrombopoietic-mesenchymal interaction that may facilitate both endochondral ossification and platelet maturation via CCN2. *Journal of Cell Communication and Signaling* **4**:1, 5-14. [[CrossRef](#)]
29. Vishal Mehta. 2010. Platelet-Rich Plasma: A Review of the Science and Possible Clinical Applications. *Orthopedics* **33**:2, 111-114. [[CrossRef](#)]
30. Patrick Vavken, Fawzy A. Saad, Martha M. Murray. 2010. Age dependence of expression of growth factor receptors in porcine ACL fibroblasts. *Journal of Orthopaedic Research* n/a-n/a. [[CrossRef](#)]
31. Nathalie Chevaller, Fani Anagnostou, Sebastien Zilber, Gwellaouen Bodivit, Sophie Maurin, Aurelie Barrault, Philippe Bierling, Philippe Hernigou, Pierre Layrolle, Helene Rouard. 2010. Osteoblastic differentiation of human mesenchymal stem cells with platelet lysate. *Biomaterials* **31**:2, 270-278. [[CrossRef](#)]
32. Francisco Forriol, Umile Giuseppe Longo, Carlos Concejo, Purificacion Ripalda, Nicola Maffulli, Vincenzo Denaro. 2009. Platelet-rich plasma, rhOP-1® (rhBMP-7) and frozen rib allograft for the reconstruction of bony mandibular defects in sheep. A pilot experimental study. *Injury* **40**, S44-S49. [[CrossRef](#)]
33. A.S. Plachokova, J. van den Dolder, J.J.J.P. van den Beucken, J.A. Jansen. 2009. Bone regenerative properties of rat, goat and human platelet-rich plasma. *International Journal of Oral and Maxillofacial Surgery* **38**:8, 861-869. [[CrossRef](#)]
34. Michail Spyridakis, Gregory Christodoulidis, Constantine Chatzitheofilou, Dimitris Symeonidis, Konstantinos Tepetes. 2009. The Role of the Platelet-Rich Plasma in Accelerating the Wound-Healing Process and Recovery in Patients Being Operated for Pilonidal Sinus Disease: Preliminary Results. *World Journal of Surgery* **33**:8, 1764-1769. [[CrossRef](#)]
35. Manitha B. Nair, H.K. Varma, K.V. Menon, Sachin J. Shenoy, Annie John. 2009. Reconstruction of goat femur segmental defects using triphasic ceramic-coated hydroxyapatite in combination with autologous cells and platelet-rich plasma. *Acta Biomaterialia* **5**:5, 1742-1755. [[CrossRef](#)]
36. Sonja Ellen Lobo, Francisco Henrique Lanna Wykrota, Ana Carolina Marques Barbosa Oliveira, Irina Kerkis, Germán Bohorquez Mahecha, Humberto José Alves. 2009. Quantification of bone mass gain in response to the application of biphasic bioceramics and platelet concentrate in critical-size bone defects. *Journal of Materials Science: Materials in Medicine* **20**:5, 1137-1147. [[CrossRef](#)]

37. Chia-Wen Hsu, Kuo Yuan, Chuen-Chyi Tseng. 2009. The negative effect of platelet-rich plasma on the growth of human cells is associated with secreted thrombospondin-1. *Oral Surgery, Oral Medicine, Oral Pathology, Oral Radiology, and Endodontology* **107**:2, 185-192. [[CrossRef](#)]
38. Z HU, S PEEL, S HO, G SANDOR, C CLOKIE. 2009. Platelet-rich plasma induces mRNA expression of VEGF and PDGF in rat bone marrow stromal cell differentiation. *Oral Surgery, Oral Medicine, Oral Pathology, Oral Radiology, and Endodontology* **107**:1, 43-48. [[CrossRef](#)]
39. S. H. Zaky, A. Ottonello, P. Strada, R. Cancedda, M. Mastrogiacomo. 2008. Platelet lysate favours in vitro expansion of human bone marrow stromal cells for bone and cartilage engineering. *Journal of Tissue Engineering and Regenerative Medicine* **2**:8, 472-481. [[CrossRef](#)]
40. Philip Kasten, Julia Vogel, Florian Geiger, Philipp Niemeyer, Reto Luginbühl, Krisztian Szalay. 2008. The effect of platelet-rich plasma on healing in critical-size long-bone defects. *Biomaterials* **29**:29, 3983-3992. [[CrossRef](#)]
41. Sebastian Aryee, Andreas B. Imhoff, Tim Rose, Thomas Tischer. 2008. Do we need synthetic osteotomy augmentation materials for opening-wedge high tibial osteotomy. *Biomaterials* **29**:26, 3497-3502. [[CrossRef](#)]
42. S. Kazemnejad, A. Allameh, A. Gharehbaghian, M. Soleimani, N. Amirzadeh, M. Jazayeri. 2008. Efficient replacing of fetal bovine serum with human platelet releasate during propagation and differentiation of human bone marrow-derived mesenchymal stem cells to functional hepatocytes-like cells. *Vox Sanguinis* **95**:2, 149-158. [[CrossRef](#)]
43. Harald F. Langer, Meinrad Gawaz. 2008. Platelets in regenerative medicine. *Basic Research in Cardiology* **103**:4, 299-307. [[CrossRef](#)]
44. Dirk Jan F. Moojen, Peter A.M. Everts, Rose-Minke Schure, Ed P. Overdevest, André van Zundert, Johannes T.A. Knape, René M. Castelein, Laura B. Creemers, Wouter J.A. Dhert. 2008. Antimicrobial activity of platelet-leukocyte gel against *Staphylococcus aureus*. *Journal of Orthopaedic Research* **26**:3, 404-410. [[CrossRef](#)]
45. Humberto Filho Cerruti, Irina Kerkis, Alexandre Kerkis, Nelson Hidekazu Tatsui, Adriana da Costa Neves, Daniela Franco Bueno, Marcelo Cavenaghi Pereira da Silva. 2007. Allogeneous Bone Grafts Improved by Bone Marrow Stem Cells and Platelet Growth Factors: Clinical Case Reports. *Artificial Organs* **31**:4, 268-273. [[CrossRef](#)]