



Genetic variations within human gained enhancer elements affect human brain sulcal morphology

Herve Lemaitre^{a,*}, Yann Le Guen^b, Amanda K. Tilot^c, Jason L. Stein^d, Cathy Philippe^b, Jean-François Mangin^b, Simon E. Fisher^{c,e}, Vincent Frouin^b

^a Institut des Maladies Neurodégénératives, CNRS UMR 5293, Université de bordeaux, Centre Broca Nouvelle-Aquitaine, Bordeaux, France

^b Université Paris-Saclay, CEA, CNRS, Neurospin, Baobab UMR 9027, Gif-sur-Yvette, France

^c Language and Genetics Department, Max Planck Institute for Psycholinguistics, Nijmegen, Netherlands

^d Department of Genetics and the UNC Neuroscience Center, UNC-Chapel Hill, Chapel Hill, NC, United States of America

^e Donders Institute for Brain, Cognition and Behaviour, Radboud University, Nijmegen, Netherlands

ARTICLE INFO

Keywords:

Sulcal morphology
Human gained enhancers
Neuroimaging
Genome-wide association
Evolution

ABSTRACT

The expansion of the cerebral cortex is one of the most distinctive changes in the evolution of the human brain. Cortical expansion and related increases in cortical folding may have contributed to emergence of our capacities for high-order cognitive abilities. Molecular analysis of humans, archaic hominins, and non-human primates has allowed identification of chromosomal regions showing evolutionary changes at different points of our phylogenetic history. In this study, we assessed the contributions of genomic annotations spanning 30 million years to human sulcal morphology measured via MRI in more than 18,000 participants from the UK Biobank. We found that variation within brain-expressed human gained enhancers, regulatory genetic elements that emerged since our last common ancestor with Old World monkeys, explained more trait heritability than expected for the left and right callosal-marginal posterior fissures and the right central sulcus. Intriguingly, these are sulci that have been previously linked to the evolution of locomotion in primates and later on bipedalism in our hominin ancestors.

1. Introduction

“Nothing in biology makes sense except in the light of evolution” is one of the most cited declarations in biology (Dobzhansky, 1973) and the brain does not seem to escape this rule. Indeed, one way to better understand the structures and functions of the human brain in its current form is to understand their evolutionary history. Modern human brains were shaped by the cumulative effects of mutation, genetic recombination, and other sources of genetic variation over millions of years of evolution. While genetic variations that shaped the brain across hominin evolution may have facilitated adaptation of humans to their environment, it is thought that some may have also increased the risk for neurodevelopmental and neurodegenerative disorders (Bruner and Jacobs, 2013; Bufill et al., 2011).

Some of the most salient features of human brain evolution have been the expansion of the endocranium and a shift towards a distinctive globular shape (Gunz et al., 2019; Holloway et al., 2009). Increased skull size is thought to be driven in part by an enlargement of the cerebral cortex (Rakic, 2009). The cortex has not expanded uniformly; instead,

specific cortical areas have expanded more than others, which has also influenced cortical folding of nearby regions.

Cortical folding consists of the formations of gyri and their counterparts called sulci. This feature of neuroanatomy has often been considered in regard to evolution and ontogeny, as it varies widely among mammals and originates early during brain development (Zilles et al., 2013). Since cortical folding starts very early in life and occurs in a precise spatio-temporal order (Kersbergen et al., 2016), it has been hypothesized to be under strong genetic control (Le Guen et al., 2018). The central sulcus, one of the most prominent cortical folds, shows changes in surface area, shape and folding patterns during Old World monkey evolution (around 30 million years) until the emergence of anatomically modern humans (Hopkins et al., 2014). Changes in cortical folding patterns may have contributed to the emergence of our capacities for high-order cognitive abilities such as creativity and language. However, specific insights into the evolutionary history of the human brain are lacking due to its fast decomposition after death. Endocasts, as proxies for brain size and shape, provide the only direct evidence of human brain evolution (Dumoncel et al., 2021; Neubauer, 2014). More direct

* Corresponding author.

E-mail addresses: herve.lemaitre@u-bordeaux.fr, herve.lemaitre@u-psud.fr (H. Lemaitre).

<https://doi.org/10.1016/j.neuroimage.2022.119773>.

Received 18 March 2022; Received in revised form 7 October 2022; Accepted 24 November 2022

Available online 25 November 2022.

1053-8119/© 2022 The Authors. Published by Elsevier Inc. This is an open access article under the CC BY-NC-ND license (<http://creativecommons.org/licenses/by-nc-nd/4.0/>)

study has been impossible due to the absence of fossilized brain tissue from our hominin ancestors.

Comparative brain studies with extant primates, related to humans through common ancestors, have provided an indirect way to reconstruct some of the major changes that the brain underwent on the lineage that led to *Homo sapiens* (Heuer et al., 2019). Recent progress in the field of paleogenomics has given opportunities to study human brain evolution from a novel perspective (Pääbo, 2014). Molecular analyses of multiple human and non-human primate populations, along with DNA from fossils of archaic hominins, has made it possible to use comparative genomic and population genetic annotations to identify evolutionarily relevant loci in the human genome across diverse time scales, including: Neanderthal introgression – ≈ 50 kya - (Vernot et al., 2016), selective sweeps – ≈ 250 kya - (Peyrégne et al., 2017), human accelerated regions – ≈ 7 Mya - (Capra et al., 2013; Vermunt et al., 2016) and human gained enhancers – ≈ 30 Mya - (Reilly et al., 2015; Vermunt et al., 2016). Moreover, using neuroimaging genetic approaches, we can now study the relationship between evolutionarily annotated genetic variants and interindividual variability in brain phenotypes in living humans. For example, in one previous study it was proposed that living humans carrying a higher proportion of Neanderthal-derived variants have a skull shape closer to that seen in Neanderthal fossils, and that this is associated with structural brain differences within the visual cortex and the intraparietal sulcus (Gregory et al., 2017). Another study identified associations of particular introgressed Neanderthal fragments with endocranial globularity, influencing expression of genes involved in neurogenesis and myelination (Gunz et al., 2019). At a larger scale, these approaches have been used with success to study surface area and thickness of different cortical regions (Tilot et al., 2021) as well as measures of functional connectivity (Wei et al., 2019). Wei et al., 2019 found an association between human accelerated regions and functional activity within the default mode network in data from 6899 participants from the UK Biobank (Sudlow et al., 2015). Tilot et al., 2021 reported association between human gained enhancers and surface area in several regions, including the inferior frontal gyrus, in a sample of more than 30,000 individuals from the Enigma consortium (Grasby et al., 2020) including data from the UK Biobank.

In the present study, we aimed to expand this understanding of human brain evolution by assessing the relationship of genomic annotations spanning 30 million years with interindividual differences in human sulcal morphology in more than 18,000 participants from the UK Biobank. We hypothesized that genetic variation affecting interindividual differences in sulcal features may be enriched in genomic regions under selective pressure or those which have gained functionality over human evolution, which would demonstrate that variations within these evolutionary elements are important for regulating the areal organization of the human cortex.

2. Methods

2.1. Dataset

The analyses described here were conducted under UK Biobank data application number 25,251. The UK Biobank is a health research resource that aims to improve the prevention, diagnosis, and treatment of a wide range of illnesses. Between the years 2006 and 2010, about 500,000 people aged between 45 and 73 years old were recruited in the general population across Great Britain.

2.2. Genotyping

Genotyping in the UK Biobank was performed using the UK BiLEVE Axiom array by Affymetrix on a subset of 49,950 participants (807,411 markers) and the UK Biobank Axiom array on 438,427 participants (825,927 markers). Arrays are similar and share 95% of common SNP

probes. The imputed genotypes were obtained from the UK Biobank repository and consisted of 93,095,623 autosomal SNPs using the Haplotype Reference Consortium and UK10K + 1000 Genomes reference panels (Bycroft et al., 2018). We limited our analysis to people identified by UK Biobank as belonging to the main white British ancestry subset. Additionally, we relied on the Quality Control carried out by the UK Biobank consortium on the genotyping data which excluded participants with high missingness, high heterozygosity, first degree related individuals or sex mismatches (Bycroft et al., 2018).

2.3. Sulcal extraction

In this work, we used the T1-weighted MRI data of 20,060 participants that were available as of March 2018 and that had passed the imaging quality control performed by UK Biobank (Alfaro-Almagro et al., 2018). The cortical sulci were extracted from T1-weighted images using BrainVISA (<http://brainvisa.info>). Morphologist 2015, an image processing pipeline included in BrainVISA, was used to quantify sulcal parameters. Briefly, the Morphologist 2015 segmentation pipeline extracts left and right hemisphere masks, performs gray and white matter classification, and computes a negative cast of each cortical fold (Mangin et al., 2004). Then, a Bayesian pattern recognition approach relying on a probabilistic atlas is used to label the folds using a nomenclature of 125 sulci (Perrot et al., 2011). The sulcus recognition process combines localization and shape information. The atlas is described in detail and freely accessible here: <http://brainvisa.info/web/morphologist.html> and can be visualized online here: http://brainvisa.info/web/webgl_demo/webgl.html. For each sulcus, sulcal opening and depth features were computed. Sulcal opening was defined as the average distance between both banks of the pial surface. Sulcal depth was defined as the average geodesic distance from the convex hull of the brain to the bottom line of the sulcus medial surface (Mangin et al., 2010). In prior investigations of sulcal opening measures and single-nucleotide polymorphism (SNP) DNA data from the UK Biobank, twenty two main brain sulci were found to show significant SNP-based heritability (Le Guen et al., 2019). We therefore selected those twenty-two sulci for analysis in the current study (Fig. 1). 18,101 participants went through the fully automatic BrainVISA pipeline without error. 1959 participants failed at one of the image preprocessing steps and were excluded from our sample. When the sulcus of a participant was not properly recognized by the algorithm the participant was kept in the analysis, but his or her sulcus-related metrics were discarded. The sulci recognition rate was computed for the 18,101 images left. This metric provides a measure related to BrainVISA's difficulty in labeling a sulcus. The mean recognition rate was $94.20\% \pm 13.21\%$ [23.88%, 100%] for all sulci and $99.86\% \pm 0.4\%$ [98.49%, 100%] for the twenty-two sulci selected in this study (See Supplementary Figure S1). We did not conduct visual quality control to ensure anatomical validity on the sulci labels provided by BrainVISA.

2.4. Genome-Wide association studies

Genome-wide association studies (GWAS) were performed on a final sample of 18,101 participants (8547 females, 62.75 ± 7.45 years) that passed the image processing steps and the genetic criteria filtering. The GWAS assessed association between the filtered imputed genotypes and the sulcal opening and depth of the eleven left and eleven right selected sulci, using PLINK 1.9 (Purcell et al., 2007) with the following thresholds: missing genotypes < 10%, Hardy-Weinberg Equilibrium $p > 10^{-6}$ and minor allele frequency > 1.0% for a total of 8376,022 autosomal SNPs tested. Sex, age and the genotyping array type were added as covariates. The first 10 genetic ancestry principal components provided by UK Biobank were also added as covariates to account for population stratification.

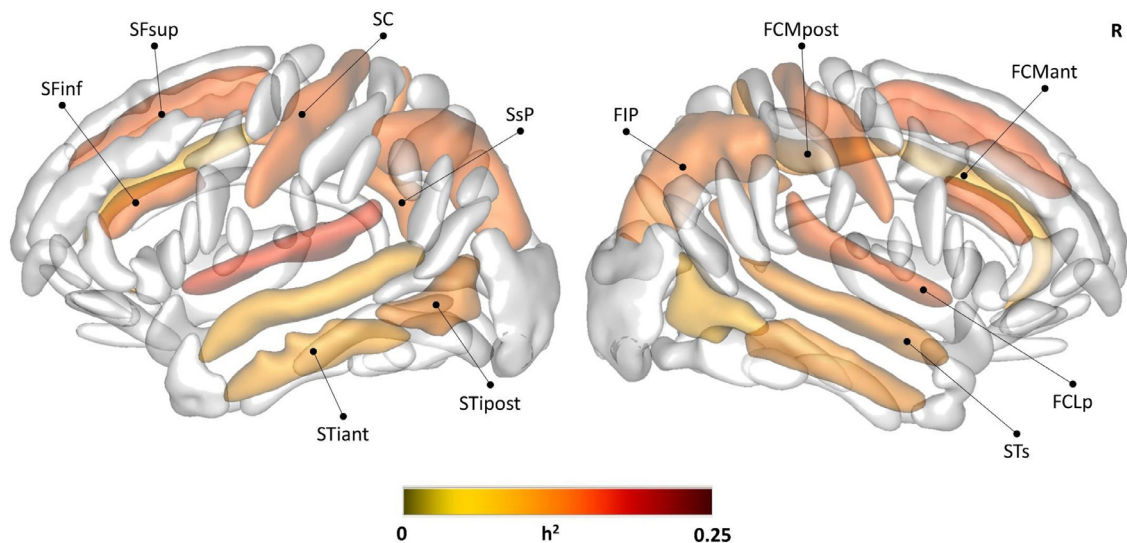


Fig. 1. SNP-based heritability estimates of sulcal opening for the twenty-two sulci. FDR corrected P -value < 0.05 . FCLp: posterior lateral fissure; FCMant: callosomarginal anterior fissure; FCMpost: callosomarginal posterior fissure; FIP: intraparietal sulcus; SC: central sulcus; SFinf: inferior frontal sulcus; SFsup: superior frontal sulcus; STiant: anterior inferior temporal sulcus; STipost: posterior inferior temporal sulcus; STs: superior temporal sulcus; SsP: sub-parietal sulcus. The sulci are displayed using the statistical probability anatomy map (SPAM) representation, which represents the average sulci shape and position on the reference base of the BrainVISA sulci extraction pipeline (Perrot et al., 2011), h^2 : SNP-based heritability, R: Right.

2.5. Partitioning heritability

The contributions of each SNP set (defined based on evolutionary annotations) to the total SNP heritability of each sulcal trait were determined using partitioned heritability analyses from the previously obtained GWAS summary statistics, following methods described in Tilot et al., 2021 and implemented in the LDSC software package (Finucane et al., 2015). Code used to perform analyses is available at <https://bitbucket.org/jasonlouisstein/enigmaevolma6/src/master/>. Genomic regions that underwent rapid change on the human lineage (human accelerated regions, HARs) were combined from several sources (Capra et al., 2013). Other annotations obtained from previous work included BED files listing fetal brain enhancer elements not found in macaques or mice (Reilly et al., 2015), a refined list of SNPs gained through introgression with Neanderthals (Simonti et al., 2016), genomic regions depleted of introgressed Neanderthal DNA (Vernot et al., 2016), and ancient selective sweep regions identified using extended lineage sorting (Peyrégné et al., 2017). A summary of all annotations can be found in Supplementary Table 1. Enrichment of heritability within HARs, selective sweep regions, Neanderthal-introgressed SNPs, and Neanderthal-depleted regions was controlled for the baselineLD v2 model from the original LDSC study (Finucane et al., 2015). Heritability enrichment in fetal brain Human Gained Enhancers (HGE) was controlled for both the baseline model and a set of fetal brain active regulatory elements (E081) from the Epigenomics Roadmap resource. Active regulatory elements were defined using chromHMM (Ernst and Kellis, 2012) marks from the 15 state models including all the following annotations: 1_TssA, 2_TssAFlnk, and 7_Enh, 6_EnhG. Enrichment was defined as the proportion of SNP heritability contained in that category divided by the proportion of SNPs in that category. The p -values for heritability estimates and heritability enrichments were corrected with the Benjamini Hochberg false discovery rate for 198 comparisons: 22 brain sulci and 9 heritability analyses (i.e., total estimate and 8 genomic annotations).

For significant positive enrichments of heritability, we then reported all SNPs that were significant for the GWAS of the sulcal trait (p -value $< 5 \times 10^{-8}$) and that overlapped with the specified genomic annotation.

Genetic correlations were also calculated using LDSC regression (Finucane et al., 2015) between sulcal traits with signifi-

cant positive enrichment and fluid intelligence score, educational achievement, and hand grip strength available in UK Biobank (https://nealelab.github.io/UKBB_ldsc/index.html).

2.6. Data availability

We made the summary statistics file from the GWAS of the sulcal traits available on the NHGRI-EBI Catalog (<https://www.ebi.ac.uk/gwas/home>).

3. Results

We examined the contribution of each set of evolutionary annotations to the SNP-based heritability of the sulcal opening and depth of twenty-two brain sulci. The total SNP-based heritability of sulcal opening was significant for all twenty-two brain sulci ranging from 0.08 to 0.21 (Table 1, Fig. 1).

We found a significant positive enrichment of heritability in sulcal opening in the left (Enrichment = 16.54, FDR corrected P -value = 0.040) and right callosomarginal posterior fissures (Enrichment = 22.44, FDR corrected P -value = 0.040) and in the right central sulcus (Enrichment = 19.33, FDR corrected P -value = 0.034) with Human Gained Enhancers (HGEs) active at 7 weeks postconception (Table 1, Fig. 2). We then looked for genome-wide significant SNPs (p -value $< 5 \times 10^{-8}$) associated with these sulcal traits within this genomic annotation. We found three SNPs associated with the sulcal opening of the right callosomarginal posterior fissure: rs2158694 (GRCh37 chr7:2,863,443, $p = 2.4 \times 10^{-8}$), rs2107964 (GRCh37 chr7:2,863,574, $p = 3.9 \times 10^{-8}$) and rs1182143 (GRCh37 chr7:2,912,928, $p = 4.1 \times 10^{-8}$). Following up, we explored possible genetic overlaps between these sulcal traits and other cognitive and motor functions such as fluid intelligence, education, and hand grip strength. We did not find any significant genetic correlations (See Supplementary Table S17-S19).

We did not find significant positive enrichment of heritability for the sulcal opening or depth of the twenty-two brain sulci for any other evolutionary annotations that we tested: Human Gained Enhancers (active at 8.5 and 12 weeks postconception), human accelerated regions, selective sweeps and Neanderthal introgressed or depleted regions (See Supplementary Tables 2 to 17).

Table 1
SNP-based heritability and enrichment in heritability of sulcal opening for Human Gained Enhancers - 7pcw.

Sulcus	Hemisphere	h ²				Enrichment		
		Estimate	SE	X ²	P-value*	Estimate	SE	P-value*
FCLp	left	0.21	0.027	58.39	4.3e-12	4.38	3.05	0.65
FCLp	right	0.17	0.027	41.02	3e-08	10.04	4.32	0.31
FCMant	left	0.08	0.024	11.75	0.12	8.39	10.03	0.82
FCMant	right	0.09	0.025	12.98	0.062	2.27	8.92	1
FCMpost	left	0.15	0.025	34.85	7.1e-07	16.54	5.03	0.04
FCMpost	right	0.12	0.024	24.49	0.00015	22.44	6.87	0.04
FIP	left	0.16	0.028	32.43	2.4e-06	10.16	5.16	0.41
FIP	right	0.15	0.026	32.73	2.1e-06	8.58	5.27	0.49
SC	left	0.17	0.027	38.37	1.2e-07	17.98	5.55	0.054
SC	right	0.16	0.029	32.18	2.8e-06	19.33	5.50	0.034
SFinf	left	0.16	0.024	48.46	6.7e-10	9.14	4.22	0.4
SFinf	right	0.17	0.025	48.44	6.7e-10	11.26	4.70	0.26
SFsup	left	0.17	0.025	47.57	1.1e-09	11.72	4.09	0.12
SFsup	right	0.18	0.028	39.85	5.4e-08	12.50	4.16	0.069
STiant	left	0.10	0.024	18.55	0.0033	7.13	5.30	0.65
STiant	right	0.12	0.024	25.74	7.7e-05	16.13	9.54	0.46
STipost	left	0.13	0.023	29.74	9.8e-06	-2.37	8.03	0.92
STipost	right	0.08	0.021	15.46	0.017	2.68	6.34	0.99
STs	left	0.09	0.025	14.24	0.032	8.40	5.10	0.47
STs	right	0.12	0.026	20.45	0.0012	11.97	5.23	0.26
SsP	left	0.16	0.026	37.23	2.1e-07	10.22	7.21	0.52
SsP	right	0.14	0.027	26.96	4.1e-05	-0.64	5.86	0.99

* p-value corrected for multiple comparisons with the Benjamini Hochberg false discovery rate. h²: SNP-based heritability, X²: Chi-squared, SE: Standard Error. FCLp: posterior lateral fissure; FCMant: calloso-marginal anterior fissure; FCMpost: calloso-marginal posterior fissure; FIP: intraparietal sulcus; SC: central sulcus; SFinf: inferior frontal sulcus; SFsup: superior frontal sulcus; STiant: anterior inferior temporal sulcus; STipost: posterior inferior temporal sulcus; STs: superior temporal sulcus; SsP: sub-parietal sulcus.

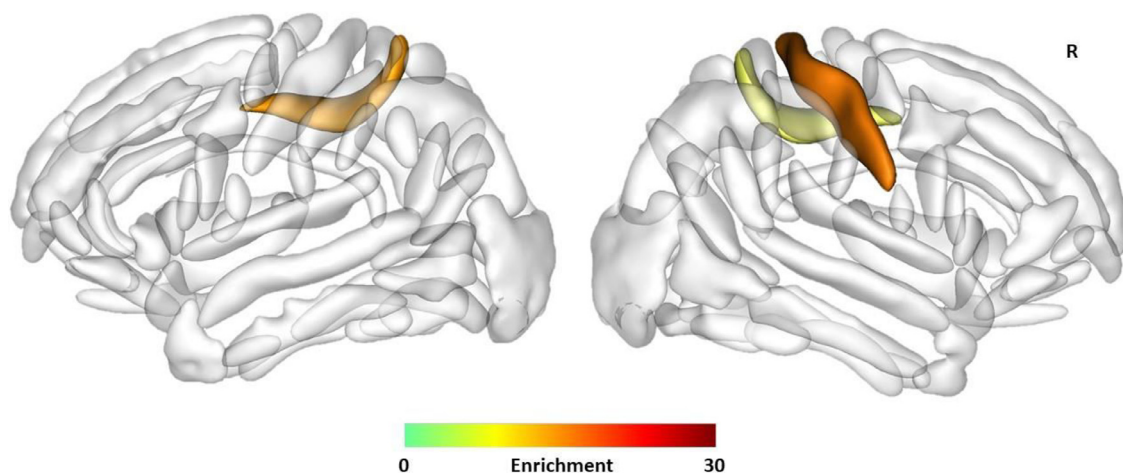


Fig. 2. Enrichment of heritability of sulcal opening in the left (Enrichment = 16.54, FDR corrected *P*-value = 0.040) and right calloso-marginal posterior fissures (Enrichment = 22.44, FDR corrected *P*-value = 0.040) and in the right central sulcus (Enrichment = 19.33, FDR corrected *P*-value = 0.034) with the Human Gained Enhancers (HGEs) active at 7 weeks postconception. The sulci are displayed using the statistical probability anatomy map (SPAM) representation, which represents the average sulci shape and position on the reference base of the BrainVISA sulci extraction pipeline (Perrot et al., 2011), R: Right.

4. Discussion

Using different genomic annotations relevant to human evolution over the last 30 million years, we found that genetic variation within human gained enhancers that are active during fetal development explained more trait heritability than expected for the left and right calloso-marginal posterior fissures and the right central sulcus in adults.

During primate evolution, the formation of gyri and sulci via cortical folding has shown increases of complexity in a structured manner. Cortical folding under the influence of genetic and activity-driven processes (Borrell, 2018) could result from different mechanical forces such as axonal tension, radial expansion or differential tangential expansion (Ronan and Fletcher, 2015). It has also been proposed that such mechanical stresses could in turn affect gene expression and cell behavior during brain development (Foubet et al., 2019). This complex gyrifica-

tion of the human brain has provided more cortical surface and more space for gray matter cell bodies, neuropil and glial cells (Namba and Huttner, 2017), which might have contributed to cognitive changes in modern humans related to distinct traits like creativity and language.

From the anatomical point of view, the central sulcus is one of the major sulci in the brain that has been of particular interest in the evolution in primates. Located in the middle of sensory-motor systems, it has been related to the fine tuning of the motor system in apes and specifically to the increasing motor control of the hand. Relative to the total cortical surface, the central sulcus surface has increased along the phylogenetic timeline of primates/apes, based on comparative analyses of Old World monkeys (common ancestor \approx 30 Mya), lesser apes (\approx 20–15 Mya) and great apes (\approx 15–10 Mya), reaching its maximum in the orangutan and gorilla and then decreasing in chimpanzee and human (Hopkins et al., 2014). Moreover, great apes and humans show a dis-

tinct dorsal ventral pattern in the central sulcus presumably due to the folding over the buried “pli de passage fronto parietal moyen” (PPFM) referred to as the motor-hand area or hand knob (Mangin et al., 2019). In humans, the PPFM gyrus has been hypothesized to relate to adaptations for bipedalism and increased use of the hands for tool-use and other manual functions (Hopkins et al., 2014).

The calloso-marginal posterior fissure is the posterior part of the marginal sulcus and borders the paracentral lobule on the medial surface of the cortex where the primary sensory and motor cortices merge. This region has been linked to the control of the hind limbs and lower extremities (i.e. leg and foot) (Liao et al., 2016). It has been suggested that anatomical changes within this region could be relevant to the evolution of locomotion in primates including different types of quadrupedalism, leaping, brachiation and, in rare cases, bipedalism (Dial et al., 2015). For instance, such changes could be related to the transition from arboreal to terrestrial quadrupedalism mostly found in Old World monkeys during the Oligocene period around 30 million years ago (Napier, 1967).

From the genetic point of view, human gained enhancers are regulatory genetic elements that emerged since our last common ancestor with Old World monkeys about 30 million years ago (Reilly et al., 2015). These elements were detected by comparing regulatory elements between mice, macaques, and humans during corticogenesis. Specifically, researchers profiled post-translational histone modifications (H3K27ac and H3K4me2) to map active promoters and enhancers in mice, macaques and humans, and to identify increases in gene activity in human cortex from 7 to 12 weeks post conception (Reilly et al., 2015). These stages have been chosen to span the period of cell proliferation that generate cortical neurons when uniquely human features of the cortex begin to emerge. Symmetrical vs asymmetrical fate decision choices of the progenitor cells could be triggered by the activation of regulatory elements such as HGEs (Rakic, 1995). Indeed, HGEs are strongly enriched in open chromatin regions of the developing ventricular zone (Amiri et al., 2018; de la Torre-Ubieta et al., 2018). We hypothesize that genetic effects influencing earlier cell fate decisions could lead to stronger impacts on adult cortical structures, consistent with the predictions of the radial unit hypothesis. This could explain why we observed a stronger enrichment at 7 weeks post conception, whereas not at 8.5 or 12 weeks. In the present study, our results suggest that common genetic variations in living human populations within these regulatory elements are related to sulcal morphology. By doing so, it gives us some insight into possible biological functions gained during human evolution. Looking at non-brain features, human gained enhancers have been associated with human limb development (Cotney et al., 2013), and are argued to be important for specific changes in hindlimb morphology such as the characteristic inflexibility and shortened digits of the human foot (Prabhakar et al., 2008). Given that human gained enhancers are active in the brain and that their genetic variations are related to sulcal features in the dorsal sensory-motor system, we may speculate that they played a role in the evolution of locomotion in primates and contributed to adaptations to our unique form bipedalism. We identified three genome-wide significant SNPs within the Human Gained Enhancers (HGEs) active at 7 weeks postconception associated with the sulcal opening of the right calloso-marginal posterior fissure (rs2158694, rs2107964 and rs1182143). They are all located within or in proximity to the G Protein Subunit Alpha 12 (GNA12) gene. GNA12 has been implicated in various transmembrane signaling systems and in the migration of neurons in the developing brain (Moers et al., 2008). Other studies found associations between GNA12 genetic variations and human brain structures such as ventricular volume (Smith et al., 2020; Vojinovic et al., 2018) and gray matter density (Chen et al., 2015). Interestingly, in this last study, the associated brain regions were mainly located in medial structures of the brain encompassing the calloso-marginal posterior fissure.

In this study, we focused on sulcal opening and depth features to assess sulcal morphology instead of cortical measures such as thickness and surface area. Sulcal morphometry may be more related to differential neuronal proliferation (Reillo et al., 2011) and to axonal fiber con-

straints (Van Essen, 1997). On the other hand, cortical thickness seems more related to cellular and laminar organization of the cortical mantle (Wagstyl et al., 2015), while surface area is driven by the number of radial columns perpendicular to the pial surface (Rakic, 2009). This distinction may explain why our analyses of human gained enhancers and sulcal phenotypes highlighted different cortical regions from those for a similar analysis focused on surface area (Tilot et al., 2021), as these different biological mechanisms are not controlled by the same genetic factors. One particular result is that enrichment of heritability is only present for sulcal opening and not for sulcal depth. Sulcal depth and opening has been associated with neurodegenerative processes (Kochunov et al., 2005), while differences in sulcal length have been associated with disrupted neurodevelopment (Auzias et al., 2014). However, this dichotomy might be an oversimplification and sulcal metrics associated with brain atrophy could also be long term consequences of early neurodevelopmental processes (Schor and Bianchi, 2021). Although it is interesting to speculate on the biological processes behind differences in sulcal morphology, we need to stay cautious interpreting sulcal metrics as they do not provide direct insight into cellular/molecular mechanisms (Borrell, 2018). In a recent study of more than 9000 subjects, sulcal opening was found to be the most heritable and reliable sulcal metric (Pizzagalli et al., 2020), which could contribute to the strong relationship between this metric and the genomic annotations tested in the present study. Moreover, by selecting only significantly heritable sulci in our study, we might have missed enrichments of heritability for other sulci. However, previous work has shown that less heritable sulci are also less reliably measured (Pizzagalli et al., 2020). Therefore, our approach specifically looks for enrichment within reliably measured sulci (See Supplementary Figure S1 and Information Text).

In our study, we also reported the total SNP-based heritability of sulcal opening. These results are very similar to those reported in Le Guen et al. (2019) and Pizzagalli et al. (2020). This is not surprising given that these studies used overlapping samples of participants. For these results, we are indeed in the framework of reproducibility and not replicability as these studies draw from the same UK Biobank dataset.

Our findings should be considered in light of some limitations. We limited our study to genetic annotations over a selection of broadly defined periods of primate evolutionary history. Other approaches could be used with better temporal resolution and more comprehensive temporal distribution along lineages that led to emergence of Homo sapiens (Albers and McVean, 2020; Andirkó et al., 2021). Moreover, with our methodology we assessed only genetic variations that are polymorphic in current human populations. This study design does not allow assessment of effects of ancestral changes that are now fixed (non-variant) in modern humans, although such variations are also very likely to have contributed to the evolution of cortical gyrification. On another matter, we did not find brain structures implicated in higher-order cognitive abilities such as executive functions or language. However, the absence of positive findings here might have several alternative explanations. First, the proposed uniquely human form of cognition may not be due to a singular cognitive system but to a synergy between several behavioral traits (MacLean, 2016). This diversity of behavioral components could in part explain our failure to identify specific sulcal features associated with the human evolutionary annotations that we tested. Second, the contribution of genetic processes within cortical folding is currently debated. Indeed, mechanical forces, such as mechanical morphogenesis, have been proposed to contribute to cortical folding and are thought to play a causal role in the development and evolution of brain organization (Heuer and Toro, 2019). This convoluted path between genetic factors and sulcal shapes could conceal part of their relationships and explain why our positive results are here limited to motor cortices. Third, our sample is constituted of subjects over 45 years where cerebral atrophy is already playing a role in sulcal morphology. The effect of aging on sulcal metrics and particularly sulcal width could potentially reduce associations with developmentally-active genetic measures.

Finally, we did not interpret significant negative enrichments of heritability for the Neanderthal introgressed SNPs (See Table S8). Indeed, the LDSC approach that we used to estimate partitioned heritability allows for enrichments with a negative sign, but these values are unexpected as there are no biologically plausible mechanisms by which such directions of effect could occur. Note that these are distinct from heritability depletions, which according to the way we calculate enrichments are indicated by estimates between 0 and 1. Observations of significant negative estimates for enrichment could be due to the cumulative effect of (1) the low SNP proportions of the evolutionary annotations as compared to the reference panel, and (2) an overall lower frequency of minor alleles for Neanderthal introgressed SNPs than the other genomic annotations by a factor of three (See Table S1). In this case, the effect sizes within this annotation may not be normally distributed, producing model instability and making enrichment values uninterpretable. The use of enhanced Neanderthal introgression annotations, including a higher number of variants, should overcome this issue in the future (McArthur et al., 2021).

This study on cortical gyrification expands beyond prior work showing genetic variations within human gained enhancers have effects on surface area of multiple cortical regions such as the inferior frontal gyrus, a region known for its involvement in language processing (Tilot et al., 2021). In our study, we showed that genetic variations in genomic regions that have shown different regulatory activity over the last 30 million years of human evolution may have also impacted on the shape of different human sulci, albeit in different regions of the cortex. Based on the literature, the relationship between sulci, namely the central sulcus and calloso-marginal posterior fissure, and the human gained enhancers may possibly relate to the evolution of locomotion in primates and bipedalism in humans, generating hypotheses for further investigation. Future studies may help elaborate further on the neurobiological substrates of such evolution patterns.

Data and code availability statement

The analyses described here were conducted under UK Biobank data application number 25,251.

The cortical sulci were extracted from T1-weighted images using BrainVISA (<http://brainvisa.info>). Morphologist 2015, an image processing pipeline included in BrainVISA, was used to quantify sulcal parameters.

Code used to perform analyses is available at <https://github.com/bulik/ldsc> and <https://bitbucket.org/jasonlouisstein/enigmaevolma6/src/master/>.

We made the summary statistics file from the GWAS of the sulcal traits available on the NHGRI-EBI Catalog (<https://www.ebi.ac.uk/gwas/home>).

Declaration of Competing Interest

The authors declare that they have no known competing financial interests or personal relationships that could have appeared to influence the work reported in this paper.

Credit authorship contribution statement

Herve Lemaitre: Conceptualization, Investigation, Formal analysis, Visualization, Writing – original draft, Writing – review & editing. **Yann Le Guen:** Data curation, Methodology. **Amanda K. Tilot:** Methodology, Conceptualization. **Jason L. Stein:** Methodology, Conceptualization. **Cathy Philippe:** Methodology, Writing – review & editing. **Jean-François Mangin:** Conceptualization, Writing – review & editing. **Simon E. Fisher:** Conceptualization, Writing – review & editing. **Vincent Frouin:** Conceptualization, Writing – review & editing.

Acknowledgement

This research has been conducted using data from UK Biobank, a major biomedical database: (www.ukbiobank.ac.uk).

We thank Gökberk Alagöz (Max Planck Institute for Psycholinguistics, Nijmegen) for helpful comments on the manuscript.

Supplementary materials

Supplementary material associated with this article can be found, in the online version, at doi:[10.1016/j.neuroimage.2022.119773](https://doi.org/10.1016/j.neuroimage.2022.119773).

References

- Albers, P.K., McVean, G., 2020. Dating genomic variants and shared ancestry in population-scale sequencing data. *PLoS Biol* 18, e3000586. doi:[10.1371/journal.pbio.3000586](https://doi.org/10.1371/journal.pbio.3000586).
- Alfaro-Almagro, F., Jenkinson, M., Bangerter, N.K., Andersson, J.L.R., Griffanti, L., Douaud, G., Sotiropoulos, S.N., Jbabdi, S., Hernandez-Fernandez, M., Vallee, E., Vidaurre, D., Webster, M., McCarthy, P., Rorden, C., Daducci, A., Alexander, D.C., Zhang, H., Dragonu, I., Matthews, P.M., Miller, K.L., Smith, S.M., 2018. Image processing and Quality Control for the first 10,000 brain imaging datasets from UK Biobank. *NeuroImage* 166, 400–424. doi:[10.1016/j.neuroimage.2017.10.034](https://doi.org/10.1016/j.neuroimage.2017.10.034).
- Amiri, A., Coppola, G., Scuderi, S., Wu, F., Roychowdhury, T., Liu, F., Pochareddy, S., Shin, Y., Safi, A., Song, L., Zhu, Y., Sousa, A.M.M., Gerstein, M., Crawford, G.E., Sestan, N., Abyzov, A., Vaccarino, F.M., 2018. Transcriptome and epigenome landscape of human cortical development modeled in brain organoids. *Science* 362, eaat6720. doi:[10.1126/science.aat6720](https://doi.org/10.1126/science.aat6720).
- Andirkó, A., Moriano, J., Vitriolo, A., Kuhlwlilm, M., Testa, G., Boeckx, C., 2021. Fine-grained temporal mapping of derived high-frequency variants supports the mosaic nature of the evolution of *Homo sapiens*. *bioRxiv* 2021.01.22.427608. <https://doi.org/10.1101/2021.01.22.427608>
- Auzias, G., Viellard, M., Takerkart, S., Villeneuve, N., Poinso, F., Fonséca, D.D., Girard, N., Deruelle, C., 2014. Atypical sulcal anatomy in young children with autism spectrum disorder. *NeuroImage Clin* 4, 593–603. doi:[10.1016/j.nicl.2014.03.008](https://doi.org/10.1016/j.nicl.2014.03.008).
- Borrell, V., 2018. How Cells Fold the Cerebral Cortex. *J. Neurosci. Off. J. Soc. Neurosci.* 38, 776–783. doi:[10.1523/JNEUROSCI.1106-17.2017](https://doi.org/10.1523/JNEUROSCI.1106-17.2017).
- Bruner, E., Jacobs, H.L.L., 2013. Alzheimer's disease: the downside of a highly evolved parietal lobe? *J. Alzheimers Dis. JAD* 35, 227–240. doi:[10.3233/JAD-122299](https://doi.org/10.3233/JAD-122299).
- Bufill, E., Agusti, J., Blesa, R., 2011. Human neoteny revisited: The case of synaptic plasticity. *Am. J. Hum. Biol. Off. J. Hum. Biol. Counc.* 23, 729–739. doi:[10.1002/ajhb.21225](https://doi.org/10.1002/ajhb.21225).
- Bycroft, C., Freeman, C., Petkova, D., Band, G., Elliott, L.T., Sharp, K., Motyer, A., Vukcevic, D., Delaneau, O., O'Connell, J., Cortes, A., Welsh, S., Young, A., Effingham, M., McVean, G., Leslie, S., Allen, N., Donnelly, P., Marchini, J., 2018. The UK Biobank resource with deep phenotyping and genomic data. *Nature* 562, 203–209. doi:[10.1038/s41586-018-0579-z](https://doi.org/10.1038/s41586-018-0579-z).
- Capra, J.A., Erwin, G.D., McKinsey, G., Rubenstein, J.L.R., Pollard, K.S., 2013. Many human accelerated regions are developmental enhancers. *Philos. Trans. R. Soc. Lond. B. Biol. Sci.* 368, 20130025. doi:[10.1098/rstb.2013.0025](https://doi.org/10.1098/rstb.2013.0025).
- Chen, J., Calhoun, V.D., Arias-Vasquez, A., Zwiers, M.P., van Hulzen, K., Fernández, G., Fisher, S.E., Franke, B., Turner, J.A., Liu, J., 2015. G-protein genomic association with normal variation in gray matter density. *Hum. Brain Mapp* 36, 4272–4286. doi:[10.1002/hbm.22916](https://doi.org/10.1002/hbm.22916).
- Cotney, J., Leng, J., Yin, J., Reilly, S.K., DeMare, L.E., Emera, D., Ayoub, A.E., Rakic, P., Noonan, J.P., 2013. The Evolution of Lineage-Specific Regulatory Activities in the Human Embryonic Limb. *Cell* 154, 185–196. doi:[10.1016/j.cell.2013.05.056](https://doi.org/10.1016/j.cell.2013.05.056).
- de la Torre-Ubieta, L., Stein, J.L., Won, H., Opland, C.K., Liang, D., Lu, D., Geschwind, D.H., 2018. The Dynamic Landscape of Open Chromatin during Human Cortical Neurogenesis. *Cell* 172, 289–304. doi:[10.1016/j.cell.2017.12.014](https://doi.org/10.1016/j.cell.2017.12.014), e18.
- Dial, K.P., Shubin, N., Brainerd, E., 2015. Major Transformations in the Evolution of Primate Locomotion. <https://doi.org/10.7202/CHICAGO/9780226268392.003.0015>
- Dobzhansky, T., 1973. Nothing in Biology Makes Sense except in the Light of Evolution. *Am. Biol. Teach.* 35, 125–129. doi:[10.2307/4444260](https://doi.org/10.2307/4444260).
- Dumoncel, J., Subsol, G., Durrleman, S., Bertrand, A., de Jager, E., Oettlé, A.C., Lockhat, Z., Suleman, F.E., Beaudet, A., 2021. Are endocasts reliable proxies for brains? A 3D quantitative comparison of the extant human brain and endocast. *J. Anat.* 238, 480–488. doi:[10.1111/joa.13318](https://doi.org/10.1111/joa.13318).
- Ernst, J., Kellis, M., 2012. ChromHMM: automating chromatin-state discovery and characterization. *Nat. Methods* 9, 215–216. doi:[10.1038/nmeth.1906](https://doi.org/10.1038/nmeth.1906).
- Finucane, H.K., Bulik-Sullivan, B., Gusev, A., Trynka, G., Reshef, Y., Loh, P.-R., Anttila, V., Xu, H., Zang, C., Farh, K., Ripke, S., Day, F.R., 2015. Partitioning heritability by functional annotation using genome-wide association summary statistics. *Nat. Genet.* 47, 1228–1235. doi:[10.1038/ng.3404](https://doi.org/10.1038/ng.3404).
- Foubet, O., Trejo, M., Toro, R., 2019. Mechanical morphogenesis and the development of neocortical organisation. *Cortex J. Devoted Study Nerv. Syst. Behav.* 118, 315–326. doi:[10.1016/j.cortex.2018.03.005](https://doi.org/10.1016/j.cortex.2018.03.005).
- Grasby, K.L., Jahanshad, N., Painter, J.N., Colodro-Conde, L., Bralten, J., Hibar, D.P., Lind, P.A., Pizzagalli, F., Ching, C.R.K., McMahon, M.A.B., Shatikhina, N., Zsembik, L.C.P., Thomopoulos, S.I., Zhu, A.H., Strike, L.T., Agartz, I., Alhusaini, S., Almeida, M.A.A., Alnæs, D., Amlien, I.K., Andersson, M., Ard, T., Armstrong, N.J., Ashley-Koch, A., Atkins, J.R., Bernard, M., Brouwer, R.M., Buimer, E.E.L., Bülow, R., Bürger, C., Cannon, D.M., Chakravarty, M., Chen, Q., Cheung, J.W., Couvy-Duchesne, B., Dale, A.M., Dalvie, S., de Araujo, T.K., de Zubicaray, G.I., de

- Zwarte, S.M.C., den Braber, A., Doan, N.T., Dohm, K., Ehrlich, S., Engelbrecht, H.R., Erk, S., Fan, C.C., Fedko, I.O., Foley, S.F., Ford, J.M., Fukunaga, M., Garrett, M.E., Ge, T., Giddaluru, S., Goldman, A.L., Green, M.J., Groenewold, N.A., Grotegerd, D., Gurholt, T.P., Gutman, B.A., Hansell, N.K., Harris, M.A., Harrison, M.B., Haswell, C.C., Hauser, M., Hermes, S., Heslenfeld, D.J., Ho, N.F., Hoehn, D., Hoffmann, P., Holleran, L., Hoogman, M., Hottenga, J.-J., Ikeda, M., Janowitz, D., Jansen, I.E., Jia, T., Jockwitz, C., Kanai, R., Karama, S., Kasperavicute, D., Kaufmann, T., Kelly, S., Kikuchi, M., Klein, M., Knapp, M., Knodt, A.R., Krämer, B., Lam, M., Lancaster, T.M., Lee, P.H., Lett, T.A., Lewis, L.B., Lopes-Cendes, I., Luciano, M., Macciardi, F., Marquand, A.F., Mathias, S.R., Melzer, T.R., Milanese, Y., Mirza-Schreiber, N., Moreira, J.C.V., Mühleisen, T.W., Müller-Myhsok, B., Najt, P., Nakahara, S., Nho, K., Olde Loohuis, L.M., Orfanos, D.P., Pearson, J.F., Pitcher, T.L., Pütz, B., Quidé, Y., Ragothaman, A., Rashid, F.M., Reay, W.R., Redlich, R., Reinbold, C.S., Repple, J., Richard, G., Riedel, B.C., Risacher, S.L., Rocha, C.S., Mota, N.R., Salminen, L., Saremi, A., Saykin, A.J., Schlag, F., Schmaal, L., Schofield, P.R., Secolin, R., Shapland, C.Y., Shen, L., Shin, J., Shumskaya, E., Sønderby, I.E., Sprooten, E., Tansey, K.E., Teumer, A., Thalathuthu, A., Tordesillas-Gutiérrez, D., Turner, J.A., Uhlmann, A., Vallerga, C.L., van der Meer, D., van Donkelaar, M.M.J., van Eijk, L., van Erp, T.G.M., van Haren, N.E.M., van Rooij, D., van Tol, M.-J., Veldink, J.H., Verhoef, E., Walton, E., Wang, M., Wang, Y., Wardlaw, J.M., Wen, W., Westley, L.T., Whelan, C.D., Witt, S.H., Wittfeld, K., Wolf, C., Wolfers, T., Wu, J.Q., Yasuda, C.L., Zaremba, D., Zhang, Z., Zwiers, M.P., Artiges, E., Assareh, A.A., Ayasa-Arriola, R., Belger, A., Brandt, C.L., Brown, G.G., Cichon, S., Curran, J.E., Davies, G.E., Degenhardt, F., Dennis, M.F., Dietsche, B., Djurovic, S., Doherty, C.P., Espiritu, R., Garjito, D., Gil, Y., Gowland, P.A., Green, R.C., Häusler, A.N., Heindel, W., Ho, B.-C., Hoffmann, W.U., Holsboer, F., Homuth, G., Hosten, N., Jack, C.R., Jang, M., Jansen, A., Kimbrel, N.A., Kolskär, K., Koops, S., Krug, A., Lim, K.O., Luyckx, J.J., Mathalon, D.H., Mather, K.A., Mattay, V.S., Matthews, S., Mayoral Van Son, J., McEwen, S.C., Melle, I., Morris, D.W., Mueller, B.A., Nauck, M., Nordvik, J.E., Nöthen, M.M., O'Leary, D.S., Opel, N., Martinot, M.-L.P., Pike, G.B., Preda, A., Quinlan, E.B., Rasser, P.E., Ratnakar, V., Reppermund, S., Steen, V.M., Tooney, P.A., Torres, F.R., Veltman, D.J., Voyvodic, J.T., Whelan, R., White, T., Yamori, H., Adams, H.H.H., Bis, J.C., Debetto, S., Decarli, C., Fornage, M., Gudnason, V., Hofer, E., Ikram, M.A., Launer, L., Longstreth, W.T., Lopez, O.L., Mazoyer, B., Mosley, T.H., Roshchupkin, G.V., Satizabal, C.L., Schmidt, R., Seshadri, S., Yang, Q., Alzheimer's Disease Neuroimaging Initiative, CHARGE Consortium, EPiGEN Consortium, IMAGEN Consortium, SYS Consortium, Parkinson's Progression Markers Initiative, Alvim, M.K.M., Ames, D., Anderson, T.J., Andreassen, O.A., Arias-Vasquez, A., Bastin, M.E., Baune, B.T., Beckham, J.C., Blangero, J., Boomsma, D.I., Brodaty, H., Brunner, H.G., Buckner, R.L., Buitelaar, J.K., Bustillo, J.R., Cahn, W., Cairns, M.J., Calhoun, V., Carr, V.J., Caseras, X., Caspers, S., Cavalleri, G.L., Cendes, F., Corvin, A., Crespo-Facorro, B., Dalrymple-Alford, J.C., Dannlowski, U., de Geus, E.J.C., Deary, I.J., Delanty, N., Depondt, C., Desrivieres, S., Donohoe, G., Espeseth, T., Fernández, G., Fisher, S.E., Flor, H., Forstner, A.J., Francks, C., Franke, B., Glahn, D.C., Gollub, R.L., Grabe, H.J., Gruber, O., Häberg, A.K., Hariri, A.R., Hartman, C.A., Hashimoto, R., Heinz, A., Henskens, F.A., Hillegeers, M.H.J., Hoekstra, P.J., Holmes, A.J., Hong, L.E., Hopkins, W.D., Hulshoff Pol, H.E., Jernigan, T.L., Jönsson, E.G., Kahn, R.S., Kennedy, M.A., Kircher, T.T.J., Kochunov, P., Kwok, J.B.J., Le Hellard, S., Loughland, C.M., Martin, N.G., Martinot, J.-L., McDonald, C., McMahon, K.L., Meyer-Lindenberg, A., Michie, P.T., Morey, R.A., Mowry, B., Nyberg, L., Oosterlaan, J., Ophoff, R.A., Pantelis, C., Paus, T., Pausova, Z., Penninx, B.W.J.H., Polderman, T.J.C., Posthuma, D., Rietschel, M., Roffman, J.L., Rowland, L.M., Sachdev, P.S., Sämann, P.G., Schall, U., Schumann, G., Scott, R.J., Sim, K., Sidiyia, S.M., Smoller, J.W., Sommer, I.E., St Pourcain, B., Stein, D.J., Toga, A.W., Trollor, J.N., Van der Wee, N.J.A., van 't Ent, D., Völzke, H., Walter, H., Weber, B., Weinberger, D.R., Wright, M.J., Zhou, J., Stein, J.L., Thompson, P.M., Medland, S.E., Enhancing Neuroimaging Genetics through Meta-Analysis Consortium (ENIGMA)—Genetics working group, 2020. The genetic architecture of the human cerebral cortex. *Science* 367. doi:10.1126/science.aay6690.
- Gregory, M.D., Kippenhan, J.S., Eisenberg, D.P., Kohn, P.D., Dickinson, D., Mattay, V.S., Chen, Q., Weinberger, D.R., Saad, Z.S., Berman, K.F., 2017. Neanderthal-Derived Genetic Variation Shapes Modern Human Cranium and Brain. *Sci. Rep.* 7, 6308. doi:10.1038/s41598-017-06587-0.
- Gunz, P., Tilot, A.K., Wittfeld, K., Teumer, A., Shapland, C.Y., van Erp, T.G.M., Danneemann, M., Vernot, B., Neubauer, S., Guadalupe, T., Fernández, B., Brunner, H.G., Enard, W., Fallon, J., Hosten, N., Völker, U., Profico, A., Di Vincenzo, F., Manzi, G., Kelso, J., St Pourcain, B., Hublin, J.-J., Franke, B., Pääbo, S., Macciardi, F., Grabe, H.J., Fisher, S.E., 2019. Neandertal Introgression Sheds Light on Modern Human Endocranial Globularity. *Curr. Biol.* CB 29, 120–127. doi:10.1016/j.cub.2018.10.065, e5.
- Heuer, K., Gulban, O.F., Bazin, P.-L., Osoianu, A., Valabregue, R., Santin, M., Herbin, M., Toro, R., 2019. Evolution of neocortical folding: A phylogenetic comparative analysis of MRI from 34 primate species. *Cortex J. Devoted Study Nerv. Syst. Behav.* 118, 275–291. doi:10.1016/j.cortex.2019.04.011.
- Heuer, K., Toro, R., 2019. Role of mechanical morphogenesis in the development and evolution of the neocortex. *Phys. Life Rev.* 31, 233–239. doi:10.1016/j.plev.2019.01.012.
- Holloway, R.L., Sherwood, C.C., Hof, P.R., Rilling, J.K., 2009. Evolution of the Brain in Humans – Paleoneurology. In: Binder, M.D., Hirokawa, N., Windhorst, U. (Eds.), *Encyclopedia of Neuroscience*. Springer, Berlin, Heidelberg, pp. 1326–1334. doi:10.1007/978-3-540-29678-2_3152.
- Hopkins, W.D., Meguerditchian, A., Coulon, O., Bogart, S., Mangin, J.-F., Sherwood, C.C., Grabowski, M.W., Bennett, A.J., Pierre, P.J., Fears, S., Woods, R., Hof, P.R., Vauclair, J., 2014. Evolution of the central sulcus morphology in primates. *Brain. Behav. Evol.* 84, 19–30. doi:10.1159/000362431.
- Kersbergen, K.J., Leroy, F., Işgum, I., Groenendaal, F., de Vries, L.S., Claessens, N.H.P., van Haastert, I.C., Moeskops, P., Fischer, C., Mangin, J.-F., Viergever, M.A., Dubois, J., Benders, M.J.N.L., 2016. Relation between clinical risk factors, early cortical changes, and neurodevelopmental outcome in preterm infants. *NeuroImage* 142, 301–310. doi:10.1016/j.neuroimage.2016.07.010.
- Kochunov, P., Mangin, J., Coyle, T., Lancaster, J., Thompson, P., Rivière, D., Cointepas, Y., Régis, J., Schlosser, A., Royall, D.R., Zilles, K., Mazziotta, J., Toga, A., Fox, P.T., 2005. Age-related morphology trends of cortical sulci. *Hum. Brain Mapp.* 26, 210–220. doi:10.1002/hbm.20198.
- Le Guen, Y., Auzias, G., Leroy, F., Noulhiane, M., Dehaene-Lambertz, G., Duchesnay, E., Mangin, J.-F., Coulon, O., Frouin, V., 2018. Genetic influence on the Sulcal Pits: On the Origin of the First Cortical Folds. *Cereb. Cortex N. Y. N* 1991 28, 1922–1933. doi:10.1093/cercor/bhx098.
- Le Guen, Y., Philippe, C., Rivière, D., Lemaire, H., Grigis, A., Fischer, C., Dehaene-Lambertz, G., Mangin, J.-F., Frouin, V., 2019. eQTL of KCN22 regionally influences the brain sulcal widening: evidence from 15,597 UK Biobank participants with neuroimaging data. *Brain Struct. Funct.* 224, 847–857. doi:10.1007/s00429-018-1808-9.
- Liao, C.-C., Qi, H.-X., Reed, J.L., Miller, D.J., Kaas, J.H., 2016. Congenital foot deformation alters the topographic organization in the primate somatosensory system. *Brain Struct. Funct.* 221, 383–406. doi:10.1007/s00429-014-0913-7.
- MacLean, E.L., 2016. Unraveling the evolution of uniquely human cognition. *Proc. Natl. Acad. Sci. U. S. A.* 113, 6348–6354. doi:10.1073/pnas.1521270113.
- Mangin, J.-F., Jouvant, E., Cachia, A., 2010. In-vivo measurement of cortical morphology: means and meanings. *Curr. Opin. Neurol.* 23, 359–367. doi:10.1097/WCO.0b013e32833a0af6.
- Mangin, J.-F., Le Guen, Y., Labra, N., Grigis, A., Frouin, V., Guevara, M., Fischer, C., Rivière, D., Hopkins, W.D., Régis, J., Sun, Z.Y., 2019. Plis de passage? Deserve a Role in Models of the Cortical Folding Process. *Brain Topogr.* 32, 1035–1048. doi:10.1007/s10548-019-00734-8.
- Mangin, J.-F., Rivière, D., Cachia, A., Duchesnay, E., Cointepas, Y., Papadopoulos-Orfanos, D., Collins, D.L., Evans, A.C., Régis, J., 2004. Object-based morphometry of the cerebral cortex. *IEEE Trans. Med. Imaging* 23, 968–982. doi:10.1109/TMI.2004.831204.
- McArthur, E., Rinker, D.C., Capra, J.A., 2021. Quantifying the contribution of Neanderthal introgression to the heritability of complex traits. *Nat. Commun.* 12, 4481. doi:10.1038/s41467-021-24582-y.
- Moers, A., Nürnberg, A., Goebels, S., Wettschreck, N., Offermanns, S., 2008. *Galp12/Galp13* deficiency causes localized overmigration of neurons in the developing cerebral and cerebellar cortices. *Mol. Cell. Biol.* 28, 1480–1488. doi:10.1128/MCB.00651-07.
- Namba, T., Huttner, W.B., 2017. Neural progenitor cells and their role in the development and evolutionary expansion of the neocortex. *Wiley Interdiscip. Rev. Dev. Biol.* 6. doi:10.1002/wdev.256.
- Napier, J.R., 1967. Evolutionary aspects of primate locomotion. *Am. J. Phys. Anthropol.* 27, 333–341. doi:10.1002/ajpa.1330270306.
- Neubauer, S., 2014. Endocasts: possibilities and limitations for the interpretation of human brain evolution. *Brain. Behav. Evol.* 84, 117–134. doi:10.1159/000365276.
- Pääbo, S., 2014. The human condition—a molecular approach. *Cell* 157, 216–226. doi:10.1016/j.cell.2013.12.036.
- Perrot, M., Rivière, D., Mangin, J.-F., 2011. Cortical sulci recognition and spatial normalization. *Med. Image Anal.* 15, 529–550. doi:10.1016/j.media.2011.02.008.
- Peyrègne, S., Boyle, M.J., Dannemann, M., Prüfer, K., 2017. Detecting ancient positive selection in humans using extended lineage sorting. *Genome Res* 27, 1563–1572. doi:10.1101/gr.219493.116.
- Pizzagalli, F., Auzias, G., Yang, Q., Mathias, S.R., Faskowitz, J., Boyd, J.D., Amini, A., Rivière, D., McMahon, K.L., de Zubicaray, G.I., Martin, N.G., Mangin, J.-F., Glahn, D.C., Blangero, J., Wright, M.J., Thompson, P.M., Kochunov, P., Jahanshad, N., 2020. The reliability and heritability of cortical folds and their genetic correlations across hemispheres. *Commun. Biol.* 3, 510. doi:10.1038/s42003-020-01163-1.
- Prabhakar, S., Visel, A., Akiyama, J.A., Shoukyr, M., Lewis, K.D., Holt, A., Plajzer-Frick, I., Morrison, H., Fitzpatrick, D.R., Afzal, V., Pennacchio, L.A., Rubin, E.M., Noonan, J.P., 2008. Human-specific gain of function in a developmental enhancer. *Science* 321, 1346–1350. doi:10.1126/science.1155974.
- Purcell, S., Neale, B., Todd-Brown, K., Thomas, L., Ferreira, M.A.R., Bender, D., Maller, J., Sklar, P., de Bakker, P.I.W., Daly, M.J., Sham, P.C., 2007. PLINK: a tool set for whole-genome association and population-based linkage analyses. *Am. J. Hum. Genet.* 81, 559–575. doi:10.1086/519795.
- Rakic, P., 2009. Evolution of the neocortex: Perspective from developmental biology. *Nat. Rev. Neurosci.* 10, 724–735. doi:10.1038/nrn2719.
- Rakic, P., 1995. A small step for the cell, a giant leap for mankind: a hypothesis of neocortical expansion during evolution. *Trends Neurosci* 18, 383–388. doi:10.1016/0166-2236(95)93934-p.
- Reillo, I., de Juan Romero, C., García-Cabezas, M.Á., Borrell, V., 2011. A role for intermediate radial glia in the tangential expansion of the mammalian cerebral cortex. *Cereb. Cortex N. Y. N* 1991 21, 1674–1694. doi:10.1093/cercor/bhq238.
- Reilly, S.K., Yin, J., Ayoub, A.E., Emera, D., Leng, J., Cotney, J., Sarro, R., Rakic, P., Noonan, J.P., 2015. Evolutionary genomics. Evolutionary changes in promoter and enhancer activity during human corticogenesis. *Science* 347, 1155–1159. doi:10.1126/science.1260943.
- Ronan, L., Fletcher, P.C., 2015. From genes to folds: a review of cortical gyrfication theory. *Brain Struct. Funct.* 220, 2475–2483. doi:10.1007/s00429-014-0961-z.
- Schor, N.F., Bianchi, D.W., 2021. Neurodevelopmental Clues to Neurodegeneration. *Pediatr. Neurol.* 123, 67–76. doi:10.1016/j.pediatrneurol.2021.07.012.
- Simonti, C.N., Vernot, B., Bastarache, L., Bottinger, E., Carrell, D.S., Chisholm, R.L., Crosslin, D.R., Hebringer, S.J., Jarvik, G.P., Kullo, I.J., Li, R., Pathak, J., Ritchie, M.D., Roden, D.M., Verma, S.S., Tromp, G., Prato, J.D., Bush, W.S., Akey, J.M., Denny, J.C., Capra, J.A., 2016. The phenotypic legacy of admixture between modern humans and Neandertals. *Science* 351, 737–741. doi:10.1126/science.aad2149.

- Smith, S.M., Elliott, L.T., Alfaro-Almagro, F., McCarthy, P., Nichols, T.E., Douaud, G., Miller, K.L., 2020. Brain aging comprises many modes of structural and functional change with distinct genetic and biophysical associations. *eLife* 9, e52677. doi:[10.7554/eLife.52677](https://doi.org/10.7554/eLife.52677).
- Sudlow, C., Gallacher, J., Allen, N., Beral, V., Burton, P., Danesh, J., Downey, P., Elliott, P., Green, J., Landray, M., Liu, B., Matthews, P., Ong, G., Pell, J., Silman, A., Young, A., Sprosen, T., Peakman, T., Collins, R., 2015. UK biobank: an open access resource for identifying the causes of a wide range of complex diseases of middle and old age. *PLoS Med* 12, e1001779. doi:[10.1371/journal.pmed.1001779](https://doi.org/10.1371/journal.pmed.1001779).
- Tilot, A.K., Khrantsova, E.A., Liang, D., Grasby, K.L., Jahanshad, N., Painter, J., Colodro-Conde, L., Bralten, J., Hibar, D.P., Lind, P.A., Liu, S., Brotman, S.M., Thompson, P.M., Medland, S.E., Macciardi, F., Stranger, B.E., Davis, L.K., Fisher, S.E., Stein, J.L., 2021. The Evolutionary History of Common Genetic Variants Influencing Human Cortical Surface Area. *Cereb. Cortex N. Y. N* 1991 31, 1873–1887. doi:[10.1093/cercor/bhaa327](https://doi.org/10.1093/cercor/bhaa327).
- Van Essen, D.C., 1997. A tension-based theory of morphogenesis and compact wiring in the central nervous system. *Nature* 385, 313–318. doi:[10.1038/385313a0](https://doi.org/10.1038/385313a0).
- Vermunt, M.W., Tan, S.C., Castelijn, B., Geeven, G., Reinink, P., de Bruijn, E., Kondova, I., Persengiev, S., Bank, Netherlands Brain, Bontrop, R., Cuppen, E., de Laat, W., Creyghton, M.P., 2016. Epigenomic annotation of gene regulatory alterations during evolution of the primate brain. *Nat. Neurosci.* 19, 494–503. doi:[10.1038/nn.4229](https://doi.org/10.1038/nn.4229).
- Vernot, B., Tucci, S., Kelso, J., Schraiber, J.G., Wolf, A.B., Gittelman, R.M., Dannemann, M., Grote, S., McCoy, R.C., Norton, H., Scheinfeldt, L.B., Merriwether, D.A., Koki, G., Friedlaender, J.S., Wakefield, J., Pääbo, S., Akey, J.M., 2016. Excavating Neandertal and Denisovan DNA from the genomes of Melanesian individuals. *Science* 352, 235–239. doi:[10.1126/science.aad9416](https://doi.org/10.1126/science.aad9416).
- Vojinovic, D., Adams, H.H., Jian, X., Yang, Q., Smith, A.V., Bis, J.C., Teumer, A., Scholz, M., Armstrong, N.J., Hofer, E., Saba, Y., Luciano, M., Bernard, M., Trompet, S., Yang, J., Gillespie, N.A., van der Lee, S.J., Neumann, A., Ahmad, S., Andreassen, O.A., Ames, D., Amin, N., Arfanakis, K., Bastin, M.E., Becker, D.M., Beiser, A.S., Beyer, F., Brodaty, H., Bryan, R.N., Bülow, R., Dale, A.M., De Jager, P.L., Deary, I.J., DeCarli, C., Fleischman, D.A., Gottesman, R.F., van der Grond, J., Gudnason, V., Harris, T.B., Homuth, G., Knopman, D.S., Kwok, J.B., Lewis, C.E., Li, S., Loeffler, M., Lopez, O.L., Maillard, P., El Marroun, H., Mather, K.A., Mosley, T.H., Muetzel, R.L., Nauck, M., Nyquist, P.A., Panizzon, M.S., Pausova, Z., Psaty, B.M., Rice, K., Rotter, J.I., Royle, N., Satizabal, C.L., Schmidt, R., Schofield, P.R., Schreiner, P.J., Sidney, S., Stott, D.J., Thalamuthu, A., Uitterlinden, A.G., Valdés Hernández, M.C., Vernooij, M.W., Wen, W., White, T., Witte, A.V., Wittfeld, K., Wright, M.J., Yanek, L.R., Tiemeier, H., Kremen, W.S., Bennett, D.A., Jukema, J.W., Paus, T., Wardlaw, J.M., Schmidt, H., Sachdev, P.S., Villringer, A., Grabe, H.J., Longstreth, W.T., van Duijn, C.M., Launer, L.J., Seshadri, S., Ikram, M.A., Fornage, M., 2018. Genome-wide association study of 23,500 individuals identifies 7 loci associated with brain ventricular volume. *Nat. Commun.* 9, 3945. doi:[10.1038/s41467-018-06234-w](https://doi.org/10.1038/s41467-018-06234-w).
- Wagstyl, K., Ronan, L., Goodyer, I.M., Fletcher, P.C., 2015. Cortical thickness gradients in structural hierarchies. *NeuroImage* 111, 241–250. doi:[10.1016/j.neuroimage.2015.02.036](https://doi.org/10.1016/j.neuroimage.2015.02.036).
- Wei, Y., de Lange, S.C., Scholtens, L.H., Watanabe, K., Ardesch, D.J., Jansen, P.R., Savage, J.E., Li, L., Preuss, T.M., Rilling, J.K., Posthuma, D., van den Heuvel, M.P., 2019. Genetic mapping and evolutionary analysis of human-expanded cognitive networks. *Nat. Commun.* 10. doi:[10.1038/s41467-019-12764-8](https://doi.org/10.1038/s41467-019-12764-8).
- Zilles, K., Palomero-Gallagher, N., Amunts, K., 2013. Development of cortical folding during evolution and ontogeny. *Trends Neurosci* 36, 275–284. doi:[10.1016/j.tins.2013.01.006](https://doi.org/10.1016/j.tins.2013.01.006).