

Talazoparib, a Poly(ADP-ribose) Polymerase Inhibitor, for Metastatic Castration-resistant Prostate Cancer and DNA Damage Response Alterations: TALAPRO-1 Safety Analyses

Niven Mehra^{1,*}, Karim Fizazi², Johann S. de Bono³, Philippe Barthélémy⁴, Tanya Dorff⁵, Adam Stirling⁶, Jean-Pascal Machiels^{7,8}, Davide Bimbatti⁹, Deepak Kilari¹⁰, Herlinde Dumez¹¹, Consuelo Buttigliero¹², Inge M. van Oort¹³, Elena Castro¹⁴, Hsiang-Chun Chen¹⁵, Nicola Di Santo¹⁶, Liza DeAnnuntis¹⁷, Cynthia G. Healy¹⁸, Giorgio V. Scagliotti¹²

¹Department of Medical Oncology, Radboud University Medical Center, Nijmegen, The Netherlands

²Institut Gustave Roussy, University of Paris-Saclay, Villejuif, France

³The Institute of Cancer Research and The Royal Marsden Hospital, London, UK

⁴Medical Oncology, Institut de Cancérologie Strasbourg Europe, Strasbourg, France

⁵Medical Oncology & Therapeutics, City of Hope Comprehensive Cancer Center, Duarte, CA, USA

⁶ICON Cancer Centre, Queensland, Australia

⁷Medical Oncology, Cliniques Universitaires Saint-Luc, Brussels, Belgium

⁸Medical Oncology, Université catholique de Louvain (UCLouvain), Belgium

⁹Medical Oncology 1 Unit, Department of Oncology, Istituto Oncologico Veneto IOV IRCCS, Padova, Italy

¹⁰Division of Hematology and Oncology, Medical College of Wisconsin, Milwaukee, WI, USA

¹¹Department of General Medical Oncology, University Hospitals Leuven, Leuven Cancer Institute, and Laboratory of Experimental Oncology, Department of Oncology, KU Leuven, Leuven, Belgium

¹²Department of Oncology, University of Turin, San Luigi Gonzaga Hospital, Orbassano, Turin, Italy

¹³Department of Urology, Radboud University Medical Center, Nijmegen, The Netherlands

¹⁴Hospital Universitario Virgen de la Victoria, Instituto de Investigación Biomédica de Málaga (IBIMA), Málaga, Spain

¹⁵Biostatistics, Pfizer Inc., La Jolla, CA, USA

¹⁶Global Product Development, Pfizer Inc., Durham, NC, USA

¹⁷Safety, Pfizer Inc., Collegeville, PA, USA

¹⁸Oncology, Pfizer Inc., Collegeville, PA, USA

*Corresponding author: Niven Mehra, MD, Department of Medical Oncology, Radboud University Medical Center, Postbus 9101, 6500 HB, Nijmegen (HP452), Geert Grooteplein Zuid 8 (route 452), The Netherlands. Tel: +31 24 3610354; Fax: +31 24 3615025; Email: niven.mehra@radboudumc.nl

Abstract

Background: The phase II TALAPRO-1 study (NCT03148795) demonstrated durable antitumor activity in men with heavily pretreated metastatic castration-resistant prostate cancer (mCRPC). Here, we detail the safety profile of talazoparib.

Patients and Methods: Men received talazoparib 1 mg/day (moderate renal impairment 0.75 mg/day) orally until radiographic progression, unacceptable toxicity, investigator decision, consent withdrawal, or death. Adverse events (AEs) were evaluated: incidence, severity, timing, duration, potential overlap of selected AEs, dose modifications/discontinuations due to AEs, and new clinically significant changes in laboratory values and vital signs.

Results: In the safety population ($N = 127$; median age 69.0 years), 95.3% (121/127) experienced all-cause treatment-emergent adverse events (TEAEs). Most common were anemia (48.8% [62/127]), nausea (33.1% [42/127]), decreased appetite (28.3% [36/127]), and asthenia (23.6% [30/127]). Nonhematologic TEAEs were generally grades 1 and 2. No grade 5 TEAEs or deaths were treatment-related. Hematologic TEAEs typically occurred during the first 4–5 months of treatment. The median duration of grade 3–4 anemia, neutropenia, and thrombocytopenia was limited to 7–12 days. No grade 4 events of anemia or neutropenia occurred. Neither *BRCA* status nor alteration origin significantly impacted the safety profile. The median (range) treatment duration was 6.1 (0.4–24.9) months; treatment duration did not impact the incidence of anemia. Only 3 of the 15 (11.8% [15/127]) permanent treatment discontinuations were due to hematologic TEAEs (thrombocytopenia 1.6% [2/127]; leukopenia 0.8% [1/127]).

Conclusion: Common TEAEs associated with talazoparib could be managed through dose modifications/supportive care. Demonstrated efficacy and a manageable safety profile support continued evaluation of talazoparib in mCRPC.

ClinicalTrials.gov identifier: NCT03148795

Key words: *BRCA*; castration-resistant prostatic cancer; PARP inhibitor; talazoparib.

Received: 6 May 2022; Accepted: 1 July 2022.

© The Author(s) 2022. Published by Oxford University Press.

This is an Open Access article distributed under the terms of the Creative Commons Attribution License (<https://creativecommons.org/licenses/by/4.0/>), which permits unrestricted reuse, distribution, and reproduction in any medium, provided the original work is properly cited.

Implications for Practice

In the TALAPRO-1 phase II trial, nonhematologic treatment-emergent adverse events were generally mild/moderate. Hematologic treatment-emergent adverse events were common but manageable through dose modifications and supportive care. The median duration of grade 3-4 anemia, neutropenia, and thrombocytopenia was limited to 7-12 days. No grade 4 events of anemia or neutropenia occurred. Permanent discontinuations due to adverse events occurred in slightly more than 1 in 10 patients (11.8%); 3 patients discontinued due to hematologic adverse events. Durable antitumor efficacy, coupled with the generally manageable safety profile, supports the further evaluation of talazoparib for men with metastatic castration-resistant prostate cancer.

Introduction

Prostate cancer is the second most common cancer in men worldwide, with approximately 1.4 million new cases and 375 000 deaths in 2020.^{1,2} With improved detection and life expectancies, the global incidence of prostate cancer is expected to increase to 2.43 million cases in 2040.^{1,3,4} While androgen-deprivation therapy (ADT) induces remission for approximately 90% of patients with metastatic castration-sensitive prostate cancer (mCSPC), virtually all patients progress over time (median 24-36 months) and develop metastatic castration-resistant prostate cancer (mCRPC).⁵⁻⁷ The median survival time for patients with mCRPC is approximately 2-3 years.^{6,8,9} Despite declining mortality rates in most western countries, possibly due to early detection and treatment, the need for novel therapeutic strategies remains.^{2,10,11}

Germline or somatic alterations in cellular DNA damage response (DDR) genes, involved directly or indirectly with homologous recombination repair (HRR), have been identified in 23%-27% of men with mCRPC.¹²⁻¹⁵ While these alterations are associated with worse clinical outcomes,¹⁶⁻¹⁸ they may sensitize patients to targeted therapies, such as poly(ADP-ribose) polymerase (PARP) inhibitors.¹⁹ Talazoparib inhibits PARP1 and PARP2, two key factors involved in DDR, and effectively traps PARP on single-stranded DNA breaks, causing an accumulation of double-stranded DNA breaks that cannot be effectively repaired in cancer cells with alterations in DDR-HRR genes such as *BRCA1* and *BRCA2*.¹⁹⁻²³

Preclinical studies have also demonstrated that PARP2 plays a protective role against replicative stress in hematopoietic stem/progenitor cells, and depletion of PARP2 leads to anemia.^{24,25} PARP inhibitors are known to cause hematologic toxicities in patients with different tumor types.²⁶ The phase III EMBRACA and phase II ABRAZO trials established the safety profile of talazoparib in female and male patients with advanced breast cancer.²⁷⁻³⁰ The most common hematologic toxicities were anemia, neutropenia, and thrombocytopenia.²⁸⁻³¹

TALAPRO-1 is the first international phase II trial to evaluate the efficacy and tolerability of talazoparib monotherapy in heavily pretreated men with mCRPC and DDR-HRR alterations.^{32,33} The study demonstrated durable antitumor activity, with an objective response rate (ORR) of 29.8% (31/104; 95% CI, 21.2%-39.6%) observed for the primary cohort of patients with measurable disease. The highest efficacy was observed in men with *BRCA1/2* alterations (ORR = 45.9% [28/61]), although objective responses were observed in men with alterations in *PALB2* alone (ORR = 25.0% [1/4]) or *ATM* (ORR = 11.8 [2/17]). Adverse events observed in older men with mCRPC appeared similar to the established safety profile of talazoparib in younger women and men with breast cancer and included anemia, gastrointestinal events, and asthenia.^{29,33} Here, we provide an in-depth analysis of the

specific safety profile of talazoparib in men with mCRPC that may aid clinicians in the management of AEs and inform clinical trials investigating the use of talazoparib in combination with other anticancer treatments.

Patients and Methods

Study Design and Participants

TALAPRO-1 (ClinicalTrials.gov identifier: NCT03148795) is an ongoing, multinational, open-label phase II trial. Detailed study information has been previously published³³ but in summary, male patients (aged ≥ 18 years) with mCRPC were enrolled at 43 sites from within Australia, Brazil, Europe, South Korea, and the US. The safety population included patients with DDR-HRR core gene alterations that may sensitize to PARP inhibition (including but not limited to *ATM*, *ATR*, *BRCA1*, *BRCA2*, *CHEK2*, *FANCA*, *MLH1*, *MRE11A*, *NBN*, *PALB2*, *RAD51C*). Patients were previously treated with at least 1 taxane-based chemotherapy regimen for metastatic prostate cancer (castration-sensitive or -resistant) and progressed on at least 1 novel hormonal therapy (enzalutamide and/or abiraterone acetate/prednisone) given in the mCRPC setting.

All men received oral talazoparib (Pfizer Inc., New York, USA) 1 mg/day (0.75 mg/day for moderate renal impairment) and continued treatment until radiographic progression, unacceptable toxicity, investigator decision, withdrawal of consent, or death. Moderate renal impairment was defined as an estimated glomerular filtration rate of 30-59 mL/minute/1.73 m² provided by the central laboratory. Appropriate dose modifications were allowed; dosage could be reduced in increments of 0.25 mg/day, and supportive care could be provided following grade 2, 3, or 4 events. For grade 3-4 hematologic AEs (defined as anemia, hemoglobin <80 g/L; neutropenia, absolute neutrophil count [ANC] <1000/ μ L; thrombocytopenia, platelets <50 000/ μ L), talazoparib was paused and the patient was monitored weekly. Upon resolution of the event (anemia, hemoglobin ≥ 90 g/L; neutropenia, ANC ≥ 1500 / μ L; and thrombocytopenia, platelets $\geq 50 000$ / μ L), talazoparib was resumed at the next lowest dose level (as of protocol amendment 4 [November 15, 2018]). If the event persisted for >4 weeks without recovery, despite supportive care, talazoparib was permanently discontinued. Detailed protocol requirements following additional AEs have been previously published.³³ Clinical laboratory tests and safety assessments were performed at screening and at each scheduled visit while taking talazoparib (every 2 weeks up to week 9, then every 4 weeks up to week 25, and thereafter every 12 weeks [hematology and serum chemistry every 8 weeks]).

TALAPRO-1 followed good clinical practice standards, the Declaration of Helsinki, and the International Conference on Harmonization. The Institutional Review Board or Ethics

Committee at each study site approved the protocol. All patients provided signed informed consent.

Outcomes

Outcomes and assessments have been previously published.³³ The primary endpoint was confirmed ORR by blinded independent central review (BICR). Secondary and exploratory endpoints included time to objective response, duration of objective response, prostate-specific antigen (PSA) decline $\geq 50\%$ from baseline, time to PSA progression, circulating tumor cell (CTC) conversion rate, radiographic progression-free survival per BICR and investigator assessment, overall survival, safety, and potential biomarkers of response. Patient-reported outcomes (time to deterioration in patient-reported pain, as assessed by the Brief Pain Inventory-Short Form [BPI-SF]; change from baseline in patient-reported pain as per the BPI-SF; and change from baseline in patient-reported outcome general health status, as assessed by the European Quality of Life 5-Dimension 5-Level Scale [EQ-5D-5L]) have been reported previously.³⁴ The pharmacokinetic data will also be reported separately.

Safety Assessments

Safety analyses comprised the incidence of serious and non-serious AEs (including incidence of new clinically significant changes in clinical laboratory values and vital signs), severity of AEs, timing and duration of AEs, and incidence of dose modifications and of permanent treatment discontinuation due to AEs. All AEs were evaluated using the National Cancer Institute-Common Terminology Criteria for Adverse Events, version 4.03, and coded using the Medical Dictionary for Regulatory Activities, version 23.0. Adverse events of special interest (AESI) included acute myeloid leukemia (AML), myelodysplastic syndrome (MDS), venous thrombotic events, pneumonitis, and second primary nonhematologic malignancies. The treatment-emergent period was defined as starting from the first dose of talazoparib and continuing until 28 days after the last dose, or before new systemic antineoplastic therapy or investigational drug, whichever occurred first. AEs were considered treatment-emergent AEs (TEAEs) if they occurred during the treatment-emergent period. For concurrent events, TEAEs were considered overlapping if the patient experienced both the AEs for at least 1 day. For analyses of anemia followed by fatigue, thrombocytopenia followed by bleeding event, and neutropenia followed by infections, the second AE (fatigue, bleeding, infection) had to start the same day or later after the first AE (anemia, thrombocytopenia, neutropenia), but the start date of the second AE was before the end date of the first AE.

Statistical Analyses

The full statistical methodology has been previously reported.³³ Most statistical analyses of the safety endpoints presented here are descriptive, although time-to-event endpoints are summarized using the Kaplan-Meier method and 95% CIs for medians are based on the Brookmeyer-Crowley method.

Data cutoff (at the primary completion date) was September 4, 2020. All safety analyses were performed on the safety population, which was defined as all men who received ≥ 1 dose of talazoparib, including a subset of men with nonmeasurable disease enrolled under an early version of the protocol and DDR-HRR gene alterations assessed using an expanded

DDR-HRR gene panel (FoundationOne[®] CDx; Foundation Medicine, Cambridge, MA) including genes likely to sensitize to PARP inhibition.

For endpoints analyzed by DDR-HRR alteration, a hierarchical strategy, implemented post hoc based on the latest understanding of the likely relative importance of the alteration, was used. Men were separated into alteration groups in the following order: *BRCA1/2* ranked above *PALB2*, *PALB2* ranked above *ATM*, and *ATM* ranked above all other alterations. Association between hematologic AEs and germline DDR-HRR alteration was examined as a post hoc analysis. *P* values were based on Fisher's exact test.

Results

Patients

The safety population comprised 127 men (median age 69.0 years) with at least one DDR-HRR alteration enrolled between July 4, 2017, and March 20, 2020, from an initial population that included 1425 screened men with mCRPC (1297 patients either did not have DDR-HRR alterations or failed to meet other eligibility criteria and one patient did not receive talazoparib) (Supplementary Fig. S1). Of the 127 men included in the safety population, 23 (18.1%) were enrolled under earlier versions of the protocol and did not have measurable disease, and may have had alterations in genes from the expanded screening panel. Baseline characteristics are summarized in Table 1, including the incidence of DDR-HRR alterations. In the safety population, single DDR-HRR alterations were detected in 113 (89%) men and 14 (11%) had alterations in more than one DDR-HRR gene. Of the 127 men included in the safety population, *BRCA2* alterations were the most common, detected in 48% (61) of men, followed by alterations in *ATM* (15.7% [20]), *CHEK2* (9.4% [12]), *PALB2* (5.5% [7]), and *BRCA1* and *MLH1* (each 4.7% [6]). Five (3.9%) men had alterations detected in *MSH2*; 4 (3.1%) in *NBN*; 3 (2.4%) each in *FANCA* and *RAD51C*; 2 (1.6%) each in *ATR*, *FANCD2*, *MUTYH*, and *RAD50*; and 1 (0.8%) each in *ERCC4*, *FANCE*, *MRE11A*, *MSH6*, *POLD1*, *RAD51B*, and *TP53BP1*.

Within the safety population, there were 37 (29.1%) men who received talazoparib for between ≥ 6 months and < 12 months and 28 (22.0%) men who received talazoparib for ≥ 12 months. The median (range) treatment duration of talazoparib was 6.1 (0.4-24.9) months for all men and 8.3 (0.9-22.2) months for men with *BRCA1/2* alterations.

Occurrence of Treatment-Emergent Adverse Events

In the safety population, 95.3% (121/127) of all men experienced all-cause TEAEs (Fig. 1A). The most common any grade hematologic AEs in the safety population included anemia (48.8% [62/127]), thrombocytopenia (18.9% [24/127]), and neutropenia (16.5% [21/127]) (Fig. 1B). As shown in Fig. 1C, the most commonly reported nonhematologic AEs in the safety population included nausea (33.1% [42/127]), decreased appetite (28.3% [36/127]), and asthenia (23.6% [30/127]). Most nonhematologic AEs were grades 1 and 2.

None of the grade 5 TEAEs (7.9% [10/127]) were related to the study drug, and they included death due to disease progression (4.7% [6/127]), general physical health deterioration (0.8% [1/127]), pulmonary embolism (0.8% [1/127]), subdural hematoma (0.8% [1/127]), and cardio-respiratory arrest (0.8% [1/127]).

Table 1. Baseline patient characteristics (safety and efficacy populations).^a

	Safety population (N = 127)		Efficacy population					Total (N = 104)
	BRCA1/2 (N = 61) ^b	BRCA2 (N = 57) ^b	PALB2 (N = 4)	ATM (N = 17) ^c	Other (N = 22) ^d			
Age, median (range), years	69.0 (46.0-84.0)	69.0 (46.0-83.0)	72.5 (51.0-79.0)	67.0 (53.0-81.0)	71.0 (57.0-82.0)	69.0 (46.0-83.0)		
Race, n (%)								
White	110 (86.6)	50 (87.7)	3 (75.0)	16 (94.1)	19 (86.4)	91 (87.5)		
Black	4 (3.1)	3 (5.3)	0	0	0	3 (2.9)		
Asian	3 (2.4)	0	0	1 (5.9)	1 (4.5)	2 (1.9)		
Not reported	10 (7.9)	4 (7.0)	1 (25.0)	0	2 (9.1)	8 (7.7)		
Renal impairment, n (%)								
Normal/mild	105 (82.7)	46 (80.7)	4 (100.0)	15 (88.2)	16 (72.7)	85 (81.7)		
Moderate	22 (17.3)	11 (19.3)	0	2 (11.8)	6 (27.3)	19 (18.3)		
Baseline serum PSA (µg/L), median (IQR)	103.8 (24.0-303.1)	97.4 (20.8-296.0)	118.7 (56.3-244.5)	178.5 (56.1-308.5)	153.5 (33.8-305.0)	118.6 (26.0-304.1)		
Baseline testosterone (ng/dL), median (IQR)	10.1 (10.1-19.9)	10.1 (10.1-15.8)	15.8 (10.0-33.4)	14.1 (10.1-22.2)	10.1 (10.1-20.7)	10.1 (10.1-17.7)		
Baseline CTC count (cells/7.5 mL of blood), median (IQR)	5.0 (0.0-41.0)	5.0 (0.0-22.0)	13.0 (3.0-490.0)	23.0 (0.0-62.0)	3.5 (1.5-36.5)	5.0 (1.0-38.0)		
Total Gleason score, n (%)								
Grade Group 1 (≤6)	9 (7.1)	4 (7.0)	0	2 (11.8)	3 (13.6)	9 (8.7)		
Grade Group 2 (3 + 4) and 3 (4 + 3)	39 (30.7)	17 (29.8)	0	6 (35.3)	8 (36.4)	31 (29.8)		
Grade Groups 4 (8) and 5 (9-10)	78 (61.4)	35 (61.4)	4 (100.0)	9 (52.9)	11 (50.0)	63 (60.6)		
Not reported	1 (0.8)	1 (1.8)	0	0	0	1 (1.0)		
Initial M stage at primary diagnosis, n (%)								
M0	50 (39.4)	24 (42.6)	0	6 (35.3)	7 (31.8)	39 (37.5)		
M1	57 (44.9)	25 (43.9)	4 (100.0)	9 (52.9)	9 (40.9)	48 (46.2)		
MX	16 (12.6)	7 (11.5)	0	1 (5.9)	5 (22.7)	13 (12.5)		
Not reported	4 (3.1)	2 (3.3)	0	1 (5.9)	1 (4.5)	4 (3.8)		
Disease site, n (%)								
Visceral	41 (32.3)	17 (29.8)	3 (75.0)	5 (29.4)	10 (45.5)	36 (34.6)		
Non-visceral	86 (67.7)	40 (70.2)	1 (25.0)	12 (70.6)	12 (54.5)	68 (65.4)		
ECOG performance status, n (%)								
0	52 (40.9)	24 (39.3)	0	8 (47.1)	9 (40.9)	41 (39.4)		
1	63 (49.6)	31 (50.8)	4 (100.0)	8 (47.1)	10 (45.5)	53 (51.0)		
2	12 (9.4)	6 (9.8)	0	1 (5.9)	3 (13.6)	10 (9.6)		
Prior taxane use, n (%)								
Docetaxel only	65 (51.2)	35 (57.4)	1 (25.0)	9 (52.9)	9 (40.9)	54 (51.9)		

Table 1. Continued

	Safety population (N = 127)		Efficacy population					Total (N = 104)
			BRCA1/2 (N = 61) ^b	BRCA2 (N = 57) ^b	PALB2 (N = 4)	ATM (N = 17) ^c	Other (N = 22) ^d	
Docetaxel and cabazitaxel	61 (48.0)		26 (42.6)	25 (43.9)	3 (75.0)	8 (47.1)	12 (54.5)	49 (47.1)
Not reported	1 (0.8)		0	0	0	0	1 (4.5)	1 (1.0)
Prior NHT, n (%)								
Abiraterone acetate only	45 (35.4)		28 (45.9)	27 (47.4)	2 (50.0)	3 (17.6)	4 (18.2)	37 (35.6)
Enzalutamide only	46 (36.2)		20 (32.8)	19 (33.3)	2 (50.0)	8 (47.1)	7 (31.8)	37 (35.6)
Abiraterone acetate and enzalutamide	34 (26.8)		12 (19.7)	10 (17.5)	0	6 (35.3)	10 (45.5)	28 (26.9)
Not reported	2 (1.6)		1 (1.6)	1 (1.8)	0	0	1 (4.5)	2 (1.9)

Reprinted from de Bono et al.³³ Copyright (2021), with permission from Elsevier.

^aPatients were separated hierarchically by HRR gene alterations with BRCA1/2 ascendant over PALB2, PALB2 ascendant over ATM, and ATM ascendant over all other alterations.

^bBRCA1/2 and BRCA2: included two patients with both BRCA2 and PALB2 alterations, one patient with both BRCA2 and ATM alterations, one patient with both BRCA2 and CHEK2 alterations, and one patient with both BRCA2 and MLH1 alterations.

^cATM: included one patient with both ATM and FANCA alterations, and one patient with both ATM and RAD51C alterations.

^dOther: ATM, CHEK2, FANCA, MLH1, MRE11A, NBN, and RAD51C.

Abbreviations: BRCA1/2, breast cancer susceptibility gene 1 or 2; CTC, circulating tumor cell; ECOG, Eastern Cooperative Oncology Group; HRR, homologous recombination repair; IQR, interquartile range; n, number; NHT, novel hormonal therapy; PSA, prostate-specific antigen.

All-cause serious TEAEs were reported in 43 (33.9%) men (Supplementary Table S1). The most common (in >1 man) were pulmonary embolism (6.3% [8/127]), anemia (3.9% [5/127]), and pneumonia and urinary tract infection (both 2.4% [3/127]). Disease progression, reported as an AE, occurred in 3.1% [4/127] of men. There were 17 (13.4%) instances of any grade AESI, which included venous thrombotic events (9.4% [12/127]), nonhematologic second primary malignancies (2.4% [3/127]), and pneumonitis (1.6% [2/127]). No men had AML or MDS while on study or by the end of follow-up. There were no treatment-related deaths (Supplementary Table S2).

Onset and Duration of AEs Associated with Talazoparib

The median time (range) from the first dose of talazoparib to the onset of the first episode of grade 3 or higher anemia, neutropenia, and thrombocytopenia was 56.0 (13.0-198.0), 48.5 (15.0-263.0), and 17.0 (13.0-116.0) days, respectively. The median (range) duration of grade 3 anemia, grade 3 neutropenia, grade 3 thrombocytopenia, and grade 4 thrombocytopenia was 7 (1-38), 12 (7-18), 8 (5-28), and 11 (8-17) days, respectively (Fig. 2A). No grade 4 events of anemia or neutropenia occurred. The median time (range) from the first dose of talazoparib to the onset of the first episode of grade 3 nausea, decreased appetite, asthenia, and fatigue was 33.0 (13.0-49.0), 38.5 (30.0-50.0), 83.0 (13.0-737.0), and 36.0 (2.0-737.0) days, respectively (Fig. 2B). Definitions of hematologic AE grades are provided in Supplementary Table S3.³⁵

The cumulative risk by week for the most common hematologic TEAEs is shown in Fig. 3A. As shown in Fig. 3B and 3C, hematologic TEAEs typically occurred during the first 4-5 months of treatment. The cumulative risk by week for the most common nonhematologic TEAEs is presented in Fig. 4A. A similar trend for the onset of the most common all grade nonhematologic TEAEs was also observed (all grades, Fig. 4B; grade 3, Fig. 4C).

TEAEs were managed by dose modifications and supportive care. In the safety population, 34.6% (44/127) of men received ≥1 concomitant blood transfusion product and 29.9% (38/127) received a packed red blood cell transfusion (Supplementary Table S4); of those who received a packed red blood cell transfusion, 88.9% had hemoglobin levels between 70.0-110.0 g/L prior to the first transfusion (Supplementary Fig. S2). Of the 48.8% (62/127) of men who experienced anemia, 72.6% (45/62) received ≥1 supportive treatment. Overlapping grade 3-4 hematologic TEAEs were infrequent in men receiving talazoparib. The most common overlapping grade 3-4 condition was fatigue following the occurrence of anemia (12.6% [16/127]; Supplementary Fig. S3).

Impact of Clinical and Tumor Characteristics on Hematologic TEAEs

Neither BRCA status nor DDR-HRR gene alteration origin significantly impacted the development of grade 3-4 anemia. The baseline characteristics, prior treatments, germline or somatic DDR-HRR alteration status, and duration of treatment within the overall safety population, patients with grade 3-4 anemia, and patients with grade 3-4 neutropenia are shown in Supplementary Fig. S4. The duration of treatment was similar in the overall population versus men with grade

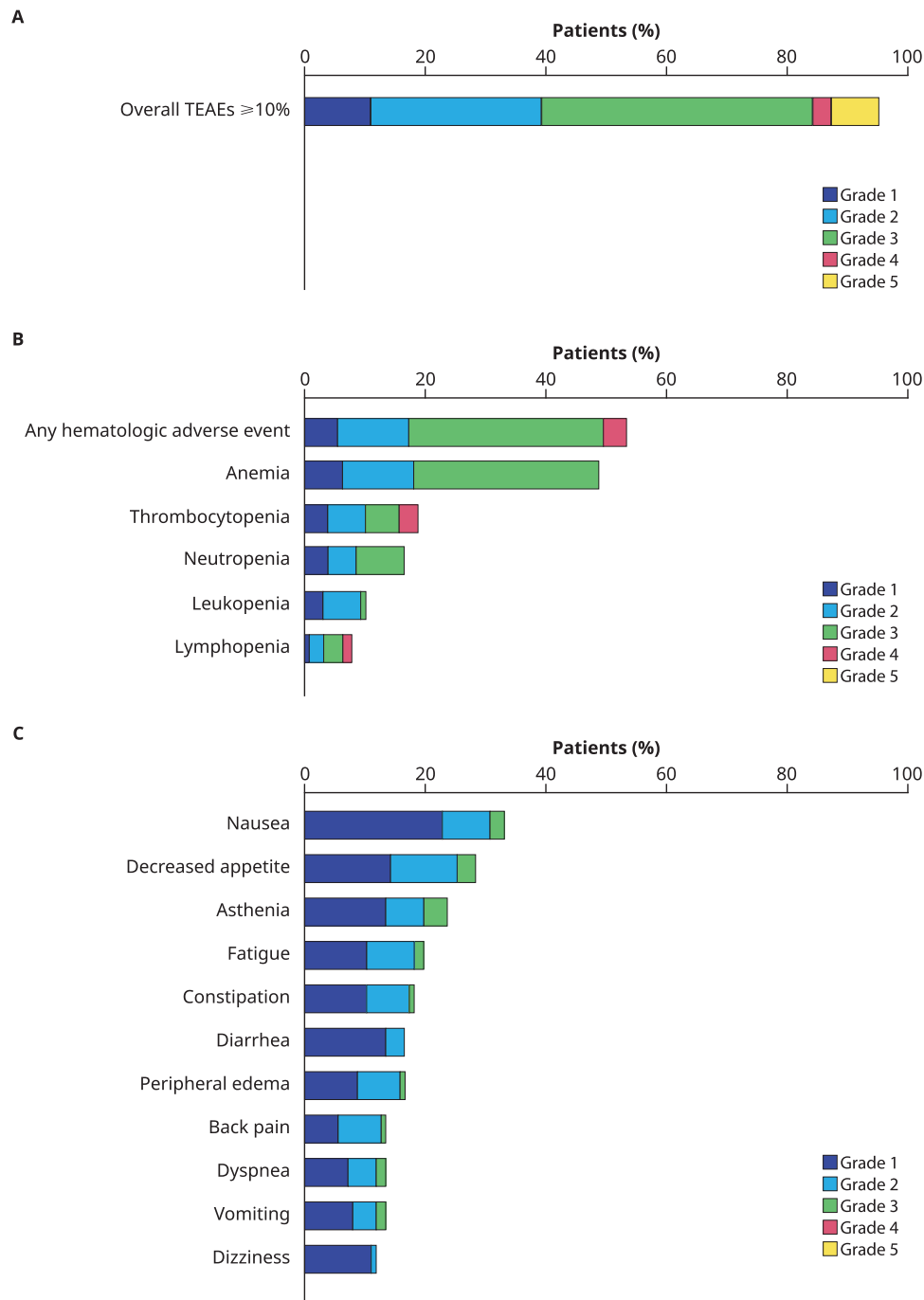


Figure 1. Any grade TEAEs (A) overall, (B) hematologic, and (C) nonhematologic^a ($N = 127$; safety population). Data were included up to 28 days after the last dose of talazoparib or before new systemic antineoplastic therapy, whichever occurred first. MedDRA v23.0 coding dictionary applied; NCI-CTCAE version 4.03. ^aIncludes TEAEs experienced by $\geq 10\%$ of patients. Abbreviations: MedDRA, Medical Dictionary for Regulatory Activities; NCI-CTCAE, National Cancer Institute-Common Terminology Criteria for Adverse Events; TEAE, treatment-emergent adverse event.

3-4 anemia. There were 51.2% (65/127) of men in the overall population who received treatment for 6 months or longer versus 56.4% (22/39) of men with grade 3-4 anemia. Among men with grade 3-4 anemia, 56.4% (22/39) had *BRCA1/2* alterations and 72.7% (16/22) of these men had a duration of treatment 6 months or longer versus 56.4% (22/39) of men in the overall population with grade 3-4 anemia.

The impact of various baseline characteristics on the development of treatment-emergent grade 3-4 anemia or neutropenia was examined. Men with low baseline hemoglobin

(<100 g/L) were more likely to experience treatment-emergent grade 3-4 anemia (75% [15/20]) than those with baseline hemoglobin within normal limits (22.4% [24/107]; $P < .0001$). Men with 4 or more prior anticancer regimens experienced a higher incidence of treatment-emergent grade 3-4 anemia (35.6% [26/73]) than men with 1-3 prior anticancer regimens (24.5% [13/53]), although the difference was not significant ($p = .24$). Duration of treatment was not significantly associated with the incidence of treatment-emergent grade 3-4 anemia: 27.4% (17/62) who received treatment

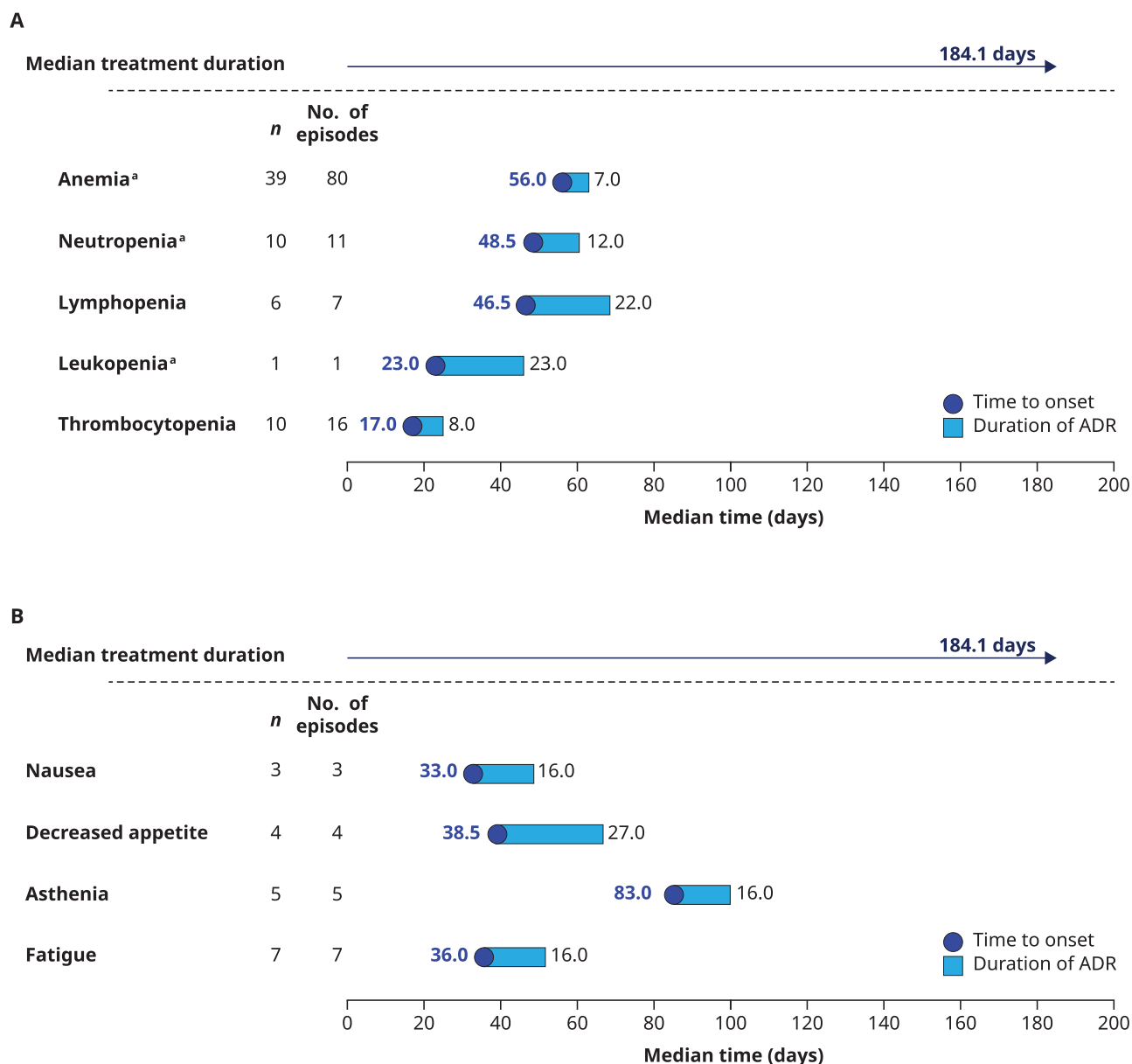


Figure 2. Median time from first dose of talazoparib to onset and duration of first grade ≥ 3 TEAEs: **(A)** hematologic adverse drug reactions and **(B)** nonhematologic adverse drug reactions ($N = 127$; safety population). MedDRA v23.0 coding dictionary applied; grades are evaluated based on NCI-CTCAE (version 4.03). Maximum grade of cluster/preferred term is considered for presenting descriptive statistics under the maximum grade of cluster/preferred term section. For duration of ADR by grade, all episodes with grades within the range were used in the calculation of descriptive statistics. ^aNo grade 4 TEAEs for anemia, neutropenia, or leukopenia; 2 men (1.6%) had grade 4 lymphopenia (median time to onset 75 days and duration 14 days) and 4 men (3.1%) had grade 4 thrombocytopenia (median time to onset 14.5 days and duration 11 days). Abbreviations: ADR, adverse drug reaction; MedDRA, Medical Dictionary for Regulatory Activities; NCI-CTCAE, National Cancer Institute-Common Terminology Criteria for Adverse Events; TEAE, treatment-emergent adverse event.

for less than 6 months developed treatment-emergent grade 3-4 anemia versus 33.8% (22/65) who received treatment for no less than 6 months. The incidence of any grade anemia was similar between men with normal renal function (48.5% [32/66]) and mild renal impairment (43.6% [17/39]), and the incidence was higher in men with moderate renal impairment (59.1% [13/22]).

For men with fewer than 10 baseline bone metastases, the associated risk of developing any grade of anemia was 44.2% ([19/43]; the risk of these patients presenting with grade ≥ 3 anemia was 23.3% [10/43]). For men with at least 10 bone metastases at baseline, the incidence was 62.5% ([35/56]

for developing any grade of anemia and 42.9% [24/56]) for developing grade ≥ 3 anemia (Supplementary Fig. S5).

Dose Modifications and Discontinuations

Dose interruptions or reductions due to TEAEs occurred in 47 (37.0%) and 33 (26.0%) men, respectively. The most common TEAEs leading to dose interruptions (>2 men) were anemia (18.9% [24/127]), thrombocytopenia (11.0% [14/127]), neutropenia (7.9% [10/127]), and decreased appetite (4.7% [6/127]). The most common TEAEs leading to dose reductions (>1 patient) were anemia (22.0% [28/127]), thrombocytopenia (4.7% [6/127]), neutropenia (3.1% [4/127]), and

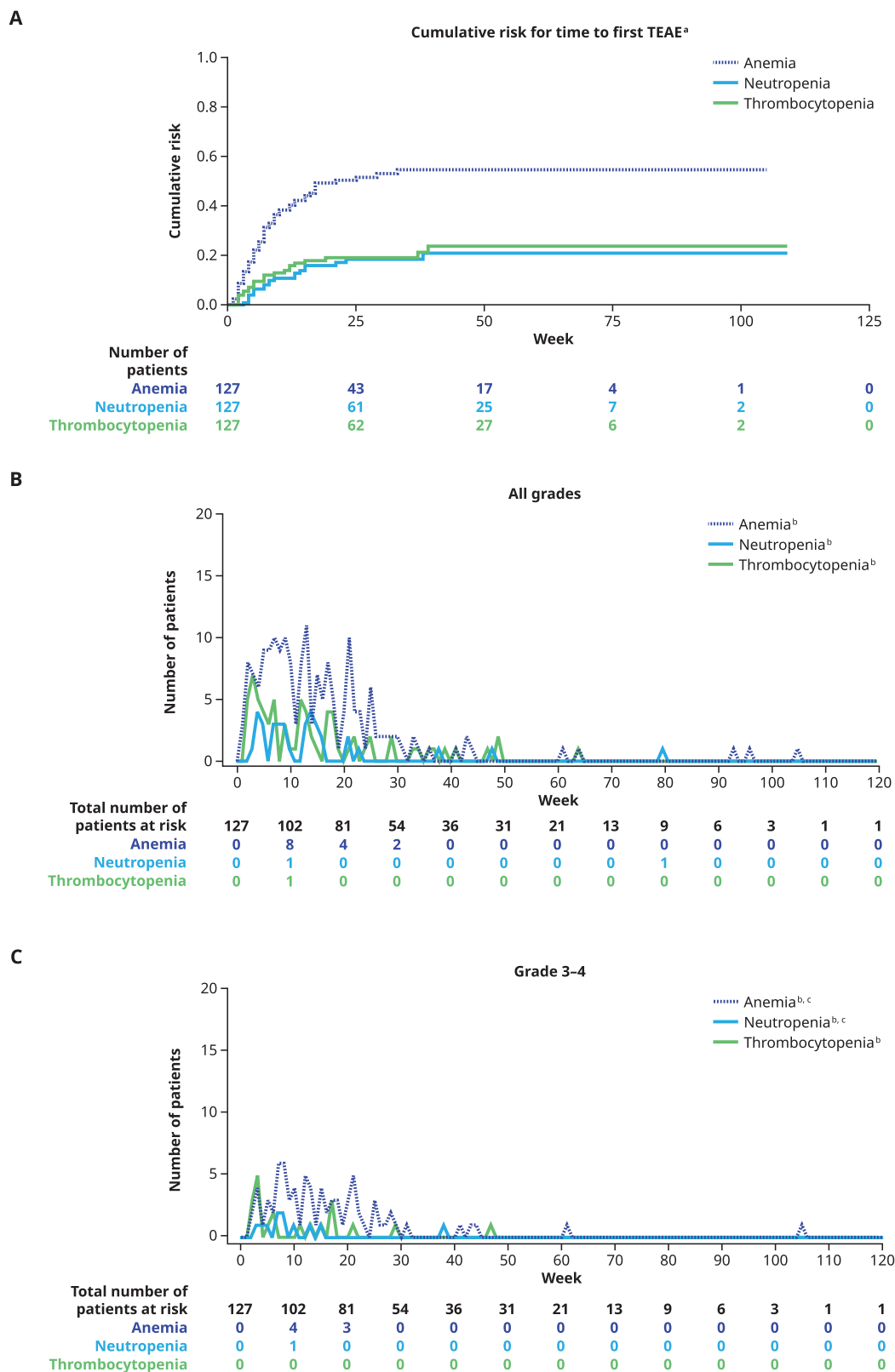


Figure 3. (A) Cumulative risk by week for time to first TEAE for anemia, neutropenia, and thrombocytopenia (cluster terms), (B) all grade TEAEs by week, and (C) grades 3-4 TEAEs by week ($N = 127$; safety population). Within each week, men with new reports of TEAEs within the cluster term were counted. Cluster terms were defined as ANEMIA: anemia, hematocrit decreased, hemoglobin decreased, red blood cell count decreased; NEUTROPENIA: neutropenia, neutrophil count decreased; THROMBOCYTOPENIA: thrombocytopenia, platelet count decreased. MedDRA v23.0 coding dictionary was applied. ^aTime to first episode of a preferred term within the cluster term was evaluated. Men who did not experience an event were censored at the end of the TE period. ^bNumber of patients with TEAEs. ^cNo grade 4 events occurred. Abbreviations: MedDRA, Medical Dictionary for Regulatory Activities; TE, treatment-emergent; TEAE, treatment-emergent adverse event.

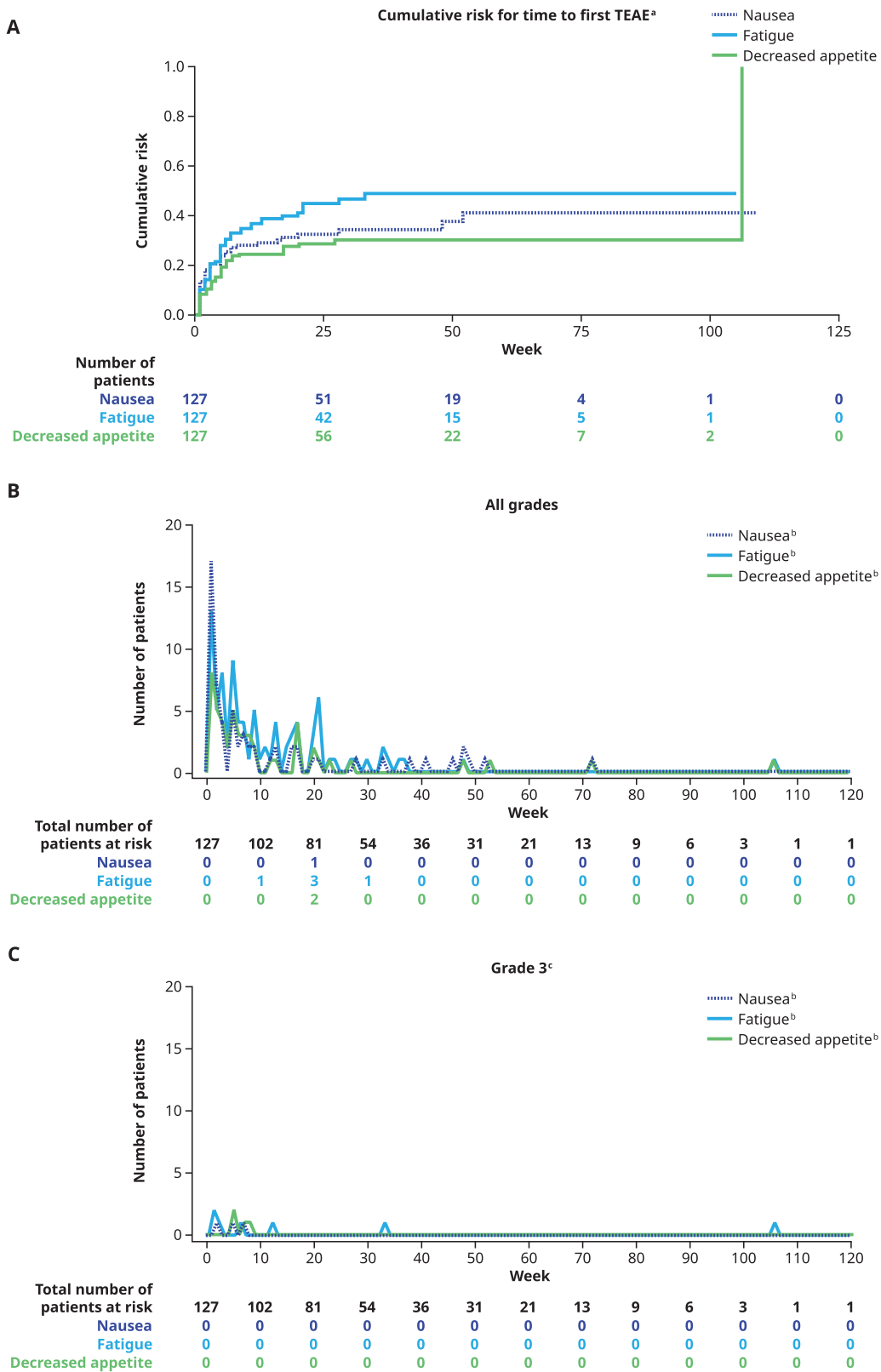


Figure 4. (A) Cumulative risk by week for time to first TEAE for nausea, fatigue (cluster term), and decreased appetite, (B) all grade TEAEs by week, and (C) grade 3 TEAEs by week ($N = 127$; safety population). MedDRA v23.0 coding dictionary was applied. Within each week, men with new reports of TEAEs within the cluster term were counted. Cluster term defined as FATIGUE: fatigue and asthenia. One patient had first occurrence of decreased appetite at 106 weeks after treatment start. ^aTime to first episode of a preferred term within the cluster term was considered. Men who did not experience an event were censored at the end of the treatment-emergent period. ^bNumber of patients with TEAEs. ^cThere were no grade 4 or 5 TEAEs observed for nausea, fatigue, or decreased appetite. Abbreviations: MedDRA, Medical Dictionary for Regulatory Activities; TEAE, treatment-emergent adverse event.

lymphopenia ([2.4% [3/127]] (Supplementary Table S5). Of the 23 (18.1%) men who experienced grade 3-4 anemia leading to a dose reduction, 10 (43.5%) experienced a recurrence of grade 3-4 anemia (Supplementary Table S6). Of the 32 (25.2%) men who experienced grade 3-4 anemia leading to a transfusion, 15 (46.9%) experienced a recurrence of grade 3-4 anemia (Supplementary Table S6).

Permanent treatment discontinuations due to all-causality TEAEs occurred in 15 men (11.8%); median (range) duration of treatment was 1.97 (0.43-7.92) months. The majority of permanent discontinuations were due to nonhematologic AEs, including back pain (1.6% [2 men]), and cancer pain, cardio-respiratory arrest, and disease progression (0.8% [1 man] each). Two (1.6%) men discontinued due to decreased platelet count and 1 (0.8%) man discontinued due to a decreased white blood cell count (Supplementary Table S5).

Discussion

The TALAPRO-1 trial demonstrated talazoparib to be effective in the treatment of mCRPC, particularly in men with *BRCA1/2* alterations.³³ The TALAPRO-1 patient population (older, heavily pretreated men with mCRPC) can be difficult to treat.³⁶⁻³⁸ Although the populations are distinct (patients with breast cancer were on average younger than patients with prostate cancer), the TEAEs were consistent with the established safety profile for talazoparib in female and male patients with germline *BRCA* (*gBRCA*)-altered advanced breast cancer.^{27-30,39} Here, we detail the safety profile of talazoparib in heavily pretreated men with mCRPC and somatic or germline DDR-HRR alterations to inform dosing in future clinical trials and provide clinicians with a thorough understanding of the incidence and management of TEAEs associated with talazoparib treatment.

The phase III EMBRACA and phase II ABRAZO trials established the safety profile of talazoparib in female and male patients with advanced breast cancer.²⁷⁻³⁰ In the EMBRACA trial, which led to the approval of talazoparib for the treatment of adult female and male patients with *gBRCA1/2*-altered human epidermal growth factor receptor 2-negative metastatic or locally advanced breast cancer, the most common hematologic toxicities were anemia, neutropenia, and thrombocytopenia.^{28,29,31} The most common nonhematologic AEs were fatigue, nausea, headache, alopecia, and vomiting.²⁹ In the ABRAZO trial, patients with advanced breast cancer and *gBRCA1/2* alterations, who had previously received either platinum or platinum-free cytotoxic regimens, demonstrated a similar safety profile. The most common AEs reported were anemia, fatigue, and nausea.³⁰ In the EMBRACA and ABRAZO trials, the median (range) age of patients was 45 (27-84) years and 50 (31-75) years, respectively,^{29,30} versus 69.0 (interquartile range [IQR] 63.0-74.0) years in the TALAPRO-1 trial.³³ All men in the TALAPRO-1 trial had received 1 or 2 prior chemotherapy regimens, including 1 or more taxane-based regimen in the metastatic setting. In contrast, in the EMBRACA trial, 76% of patients had received ≤ 1 prior cytotoxic regimen for advanced breast cancer.²⁹ The ABRAZO population was more heavily pretreated: a median (range) of 3 (1-10) prior cytotoxic therapies for advanced disease.³⁰

PARP inhibitors are known to cause hematologic toxicities, and anemia (48.8%) was the most common any grade hematologic toxicity in the TALAPRO-1 population. This

finding is consistent with the incidence of anemia reported in patients with *gBRCA*-altered advanced breast cancer treated with talazoparib in the EMBRACA trial (any grade, 52.8%) and ABRAZO trial (any grade, 52%).^{28,30} In TALAPRO-1, hematologic TEAEs were generally well-managed through dose modifications and supportive care. Of the 62 men who experienced anemia, 72.6% (45/62) received ≥ 1 supportive treatment and anemia was the most common TEAE leading to dose interruptions or reductions. With supportive care, the median duration of the most common grade 3 hematologic events was limited to 7-12 days. In the EMBRACA and ABRAZO trials, anemia was also the most common cause leading to a dose reduction or temporary interruption.^{29,30} However, there were no permanent discontinuations due to anemia in the TALAPRO-1 study. In the PROfound trial, 21.5% (55/256) of men (median [range] age 69 [47-91] years) treated with olaparib for mCRPC experienced grade ≥ 3 anemia.⁴⁰ In the GALAHAD trial, 33% (95/289) of men (median [IQR] age 69.0 [64.0-74.0] years) with mCRPC treated with niraparib experienced grade ≥ 3 anemia.⁴¹

No significant differences in the safety profile based on *BRCA* status or germline versus somatic alteration origin were observed. Ledermann et al also reported no significant difference in the proportion (or incidence) of patients with anemia between the overall patient population (any grade, 21%; grade ≥ 3 , 5%) and those with *BRCA1/2* alterations (any grade, 26%; grade ≥ 3 , 5%) in patients with ovarian cancer treated with olaparib.⁴² However, in the TRITON2 trial, which examined rucaparib in men with mCRPC, anemia was found to be more common in men with *BRCA1/2* alterations (any grade, 43.5%; grade ≥ 3 , 25.2%) than men with deleterious non-*BRCA* DDR alterations (any grade, 30.8% [24/78]; grade ≥ 3 , 15.4% [12/78]).^{43,44} In the TRITON2 trial, the median age (range) of patients with *BRCA* alterations was 72.0 (50-88), median number (range) of prior therapies for CRPC was 2 (1-8), and the proportion of patients who had ≥ 10 bone metastases was 47.0% (54/115).⁴⁴ The median age (IQR) for patients with *ATM*, *CDK12*, *CHEK2*, and other alterations in the TRITON2 trial was 73.0 (68.0-77.0), 64.0 (56.0-72.0), 71.5 (64.5-75.0), and 66.5 (61.0-72.0) years, respectively, and the median number of prior CRPC treatments for non-*BRCA* patients ranged between 2 and 3 (IQR 2-4).⁴³

In TALAPRO-1, the most common any grade nonhematologic TEAEs were nausea (33.1% [42/127]), decreased appetite (28.3% [36/127]), asthenia (23.6% [30/127]), and fatigue (19.7% [25/127]); most events were grade 1 or 2 in severity. Serious AEs due to nonhematologic TEAEs were less common. In the EMBRACA trial, the most common nonhematologic TEAEs associated with talazoparib were fatigue (62.2% [178/286]) and nausea (48.5% [139/286]) in women with *gBRCA* alterations and advanced breast cancer. Any grade alopecia and vomiting occurred in 25.2% (72/286) and 24.8% (71/286) of patients.²⁸ However, in TALAPRO-1, the incidence of alopecia was lower than the $\geq 10\%$ cutoff (4.7% [6/127]) and 13.4% (17/127) of men experienced vomiting.

Higher talazoparib exposure is associated with a higher incidence of hematologic AEs and dose interruptions, and reductions are an effective management strategy.²⁷ In TALAPRO-1, dose reductions due to an AE were common (26.0%); while permanent discontinuations due to an AE occurred in 11.8% of patients, only 2.4% of discontinuations were due to hematologic AEs. This finding is consistent with the trend observed

in the EMBRACA trial (reductions due to an AE, 52.1%; discontinuations due to an AE, 5.9%; discontinuations due to a hematologic AE, 1.4%).^{28,29}

A thorough understanding of the safety profile for treatment with talazoparib monotherapy and management of AEs in men with metastatic prostate cancer is essential in making treatment decisions and in future studies where there may be drug-drug interactions to consider. There are currently two ongoing phase III trials that compare talazoparib plus enzalutamide with enzalutamide monotherapy in men with metastatic prostate cancer: TALAPRO-2 and TALAPRO-3. TALAPRO-2 (NCT03395197) is studying men with mCRPC, with and without DDR-HRR alterations in a first-line setting. Following the conclusion of Part 1 of the TALAPRO-2 trial, the recommended dose of talazoparib was 0.5 mg/day (0.35 mg/day if moderate renal impairment) due to drug-drug interactions when combined with enzalutamide (160 mg/day).⁴⁵ TALAPRO-3 (NCT04821622) is enrolling men with mCSPC and DDR-HRR alterations receiving either 0.5 mg talazoparib plus 160 mg enzalutamide, or enzalutamide monotherapy.

Conclusion

In the ongoing TALAPRO-1 phase II study, no new safety signals were observed with talazoparib monotherapy in men with heavily pretreated mCRPC with DDR-HRR alterations. The most common any-grade TEAEs were anemia, nausea, decreased appetite, and asthenia. TEAEs were not associated with germline compared with somatic alterations. TEAEs were well managed through dose modifications and supportive care, with grade 3 hematologic AEs having a median duration of 7-12 days for the 3 most common hematologic AEs. The manageable safety profile and observed antitumor activity support further evaluation of talazoparib in advanced prostate cancer.

Acknowledgments

We thank the patients and their families and caregivers for their participation, as well as the trial centers who supported this trial. This study was sponsored by Pfizer Inc. Medical writing support was provided by Emily Messina, PhD, on behalf of CMC AFFINITY, a division of IPG Health Medical Communications, and was funded by Pfizer.

Funding

This study was sponsored by Pfizer.

Conflict of Interest

Niven Mehra: Astellas Pharma, Bristol-Myers Squibb, Genzyme, Janssen-Cilag, MSD Oncology, Roche (C/A), Astellas Pharma, Janssen-Cilag, Pfizer, Roche/Genentech, Sanofi (RF [institutional]), Astellas Pharma, Bristol-Myers Squibb, MSD Oncology, Roche (accommodation and expenses); **Karim Fizazi:** Astellas Pharma, Bayer, Clovis Oncology, CureVac, ESSA, Janssen Oncology, Orion Pharma GmbH, Sanofi (C/A), Astellas Pharma, Bayer, Janssen, Sanofi (H), Amgen, Janssen, MSD (travel, accommodation, expenses); **Johann S. de Bono:** Astellas Pharma, AstraZeneca, Bayer, BioXcel Therapeutics, Boehringer Ingelheim, Celgene, Daiichi-Sankyo, Eisai, Genmab, GSK, Janssen Oncology, Menarini Silicon Biosystems, Merck Serono,

MSD, Orion Pharma GmbH, Pfizer, Roche/Genentech, Sanofi, Sierra Oncology, Taiho Pharmaceutical (C/A), Astex Pharmaceuticals, AstraZeneca, Bayer, Celgene, CellCentric, Daiichi-Sankyo, Genentech, GSK, MedImmune, Medivation, Merck Serono, MSD, Orion Pharma GmbH, Sanofi, Sierra Oncology, Taiho Pharmaceutical (RF [institutional]), Astellas Pharma, AstraZeneca, BioXcel Therapeutics, Daiichi-Sankyo, Janssen Oncology, Menarini Silicon Biosystems, Pfizer, Roche/Genentech, Sanofi, Sierra Oncology (H), Astellas Pharma, AstraZeneca, Genmab, GSK, Orion Pharma GmbH, Qiagen, Sanofi, Taiho Pharmaceutical, Vertex (travel, accommodation, expenses), Inventor, with no financial interest, for patent 8,822,438 (IP); **Philippe Barthélémy:** Amgen, Astellas Pharma, AstraZeneca, Bristol-Myers Squibb, Ipsen, Janssen-Cilag, Merck KGaA, MSD, MSD Oncology, Pfizer (C/A), Astellas Pharma, Bristol-Myers Squibb, Ipsen, Janssen-Cilag, MSD, Pfizer (travel expenses and accommodations); **Tanya Dorff:** Advanced Accelerator Applications, Bayer, Bristol-Myers Squibb, Dendreon, Janssen, Seattle Genetics (C/A); **Adam Stirling:** AstraZeneca, Pfizer (H); **Jean-Pascal Machiels:** ALX Oncology, Amgen, AstraZeneca, Bayer, Boehringer Ingelheim, Bristol-Myers Squibb, Cue Biopharma, Debio, Incyte, Innate, Janssen, Johnson & Johnson, Merck Serono, MSD, Nanobiotix, Novartis, Pfizer, Roche (personal financial interests), AbbVie, AstraZeneca, Bayer, Boehringer Ingelheim, Celyad, GlaxoSmithKline, Incyte, iTeos, Janssen, Johnson & Johnson, KURA, Lilly, Merck Serono, MSD, Novartis, Pfizer, Roche, Sanofi-Aventis (institutional financial interests), AstraZeneca (nonfinancial interests, steering committee for head and neck trial [Kestrel] and the MSD steering committee for head and neck cancer trial [412], Amgen, Bristol-Myers Squibb, MSD, Pfizer (travel expenses). Belgian Society of Medical Oncology (board member), Belgian Foundation Against Cancer (member of the scientific committee), EORTC (member and active investigator/study coordinator of the EORTC 1559 trial); **Davide Bimbatti:** Astellas Pharma, BMS, Ipsen, Janssen, MSD, Novartis (C/A); **Deepak Kilari:** Eisai, Exelixis, MSD, Myovant Sciences, Sanofi (C/A), Astellas Pharma, Exelixis, Genentech, Genzyme (RF [institutional]), Astellas Pharma, Exelixis, Janssen (speaker's bureau), Bayer, Clovis Oncology, Exelixis, Janssen, Sanofi (travel, accommodation, expenses); **Herlinde Dumez:** Astellas Pharma, AstraZeneca, Bayer, Ipsen, Janssen-Cilag, MSD, Novartis, Pfizer, Roche, Sanofi (travel meeting accommodation); **Consuelo Buttiglierio:** Astellas Pharma, Bayer, Janssen-Cilag, Merck, MSD (C/A); **Inge M. van Oort:** Astellas Pharma, Bayer, Ipsen, Janssen, Roche, Sanofi (C/A), Astellas Pharma, Bayer (RF); **Elena Castro:** Astellas Pharma, AstraZeneca, Bayer, Clovis, Janssen, MSD, Pfizer, Roche (C/A), AstraZeneca, Bayer, Janssen-Cilag, Synlab (RF [institutional]), AstraZeneca, Bayer, Janssen (travel, accommodation, and expenses); **Hsiang-Chun Chen, Nicola Di Santo, Liza DeAnnuntis, and Cynthia G. Healy:** Pfizer (E, OI); **Giorgio V. Scagliotti:** AstraZeneca, BeiGene, Eli Lilly, Johnson & Johnson, MSD, Novartis, Pfizer, Roche, Takeda (H, commercial interest/relationships), AstraZeneca, BeiGene, Eli Lilly (C/A), Eli Lilly, MSD, Tesaro (RF [institutional]), Bayer (travel and accommodation).

(C/A) Consulting/advisory relationship; (RF) Research funding; (E) Employment; (ET) Expert testimony; (H) Honoraria received; (OI) Ownership interests; (IP) Intellectual property rights/inventor/patent holder; (SAB) Scientific advisory board.

Author Contributions

Acquisition of data: N.M., K.F., J.S.dB., P.B., T.D., A.S., J.-P.M., D.B., D.K., H.D., C.B., I.M.vO., E.C., G.V.S. Data oversight: H.-C.C., N.Di.S., L.D.A., C.G.H. Contributed to the study design, including the analysis: H.-C.C., N.Di.S., L.D.A., C.G.H. Assisted with the data analysis: H.-C.C. Interpretation of the data: All authors. Preparation, review, and approval of the manuscript: All authors. Agree to be accountable for all aspects of the work presented: All authors.

Data Availability

Upon request and subject to review, Pfizer will provide the data that support the findings of this study. Subject to certain criteria, conditions, and exceptions, Pfizer may also provide access to the related individual de-identified participant data. See <https://www.pfizer.com/science/clinical-trials/trial-data-and-results> for more information.

Supplementary Material

Supplementary material is available at *The Oncologist* online.

References

1. Ferlay J, Ervik M, Lam F et al. *Global cancer observatory: cancer today*. Lyon, France: International Agency for Research on Cancer. World Health Organization, 2020. Accessed March 2, 2022. Available at <https://gco.iarc.fr/today/home>.
2. Sung H, Ferlay J, Siegel RL, et al. Global cancer statistics 2020: GLOBOCAN estimates of incidence and mortality worldwide for 36 cancers in 185 countries. *CA Cancer J Clin* 2021;71:209-249. <https://doi.org/10.3322/caac.21660>.
3. Taitt HE. Global trends and prostate cancer: a review of incidence, detection, and mortality as influenced by race, ethnicity, and geographic location. *Am J Mens Health* 2018;12:1807-1823. <https://doi.org/10.1177/1557988318798279>.
4. Rawla P. Epidemiology of prostate cancer. *World J Oncol* 2019;10:63-89. <https://doi.org/10.14740/wjon1191>.
5. Tucci M, Caffo O, Buttigliero C, et al. Therapeutic options for first-line metastatic castration-resistant prostate cancer: Suggestions for clinical practise in the CHARTED and LATITUDE era. *Cancer Treat Rev*. 2019;74:35-42. <https://doi.org/10.1016/j.ctrv.2019.01.002>.
6. Huang X, Chau CH, Figg WD. Challenges to improved therapeutics for metastatic castrate resistant prostate cancer: from recent successes and failures. *J Hematol Oncol* 2012;5:35. <https://doi.org/10.1186/1756-8722-5-35>.
7. Karantanos T, Corn PG, Thompson TC. Prostate cancer progression after androgen deprivation therapy: mechanisms of castrate resistance and novel therapeutic approaches. *Oncogene* 2013;32:5501-5511. <https://doi.org/10.1038/onc.2013.206>.
8. Omlin A, Pezaro C, Mukherji D, et al. Improved survival in a cohort of trial participants with metastatic castration-resistant prostate cancer demonstrates the need for updated prognostic nomograms. *Eur Urol*. 2013;64:300-306. <https://doi.org/10.1016/j.eururo.2012.12.029>.
9. Westgeest HM, Uyl-de Groot CA, van Moorselaar RJA, et al. Differences in trial and real-world populations in the Dutch Castration-resistant Prostate Cancer Registry. *Eur Urol Focus* 2018;4:694-701. <https://doi.org/10.1016/j.euf.2016.09.008>.
10. Negoita S, Feuer EJ, Mariotto A, et al. Annual report to the nation on the status of cancer, part II: recent changes in prostate cancer trends and disease characteristics. *Cancer* 2018;124:2801-2814. <https://doi.org/10.1002/cncr.31549>.
11. Parker C, Castro E, Fizazi K, et al. Prostate cancer: ESMO Clinical Practice Guidelines for diagnosis, treatment and follow-up. *Ann Oncol*. 2020;31:1119-1134. <https://doi.org/10.1016/j.annonc.2020.06.011>.
12. Chung JH, Dewal N, Sokol E, et al. Prospective comprehensive genomic profiling of primary and metastatic prostate tumors. *JCO Precis Oncol* 2019;3:PO.18.00283. <https://doi.org/10.1200/PO.18.00283>.
13. Armenia J, Wankowicz SAM, Liu D, et al. The long tail of oncogenic drivers in prostate cancer. *Nat Genet*. 2018;50:645-651. <https://doi.org/10.1038/s41588-018-0078-z>.
14. Anscher MS, Chang E, Gao X, et al. FDA approval summary: rucaparib for the treatment of patients with deleterious BRCA-mutated metastatic castrate-resistant prostate cancer. *Oncologist* 2021;26:139-146. <https://doi.org/10.1002/onco.13585>.
15. U.S. Food and Drug Administration. FDA approves olaparib for HRR gene-mutated metastatic castration-resistant prostate cancer. 2020. Accessed March 2, 2022. Available at <https://www.fda.gov/drugs/drug-approvals-and-databases/fda-approves-olaparib-hrr-gene-mutated-metastatic-castration-resistant-prostate-cancer>.
16. Castro E, Romero-Laorden N, Del Pozo A, et al. PROREPAIR-B: a prospective cohort study of the impact of germline DNA repair mutations on the outcomes of patients with metastatic castration-resistant prostate cancer. *J Clin Oncol*. 2019;37:490-503. <https://doi.org/10.1200/JCO.18.00358>.
17. Lozano Mejorada R, Castro Marcos E, Aragon IM, et al. Clinical impact of somatic alterations in prostate cancer patients with and without previously known germline BRCA1/2 mutations: results from PROREPAIR-A study. *Ann Oncol*. 2020;31(suppl 4):S509-S510.
18. Kim IE Jr, Kim S, Srivastava A, et al. Similar incidence of DNA damage response pathway alterations between clinically localized and metastatic prostate cancer. *BMC Urol*. 2019;19:33. <https://doi.org/10.1186/s12894-019-0453-9>.
19. Lord CJ, Ashworth A. PARP inhibitors: synthetic lethality in the clinic. *Science* 2017;355:1152-1158. <https://doi.org/10.1126/science.aam7344>.
20. Murai J, Huang SN, Das BB, et al. Trapping of PARP1 and PARP2 by clinical PARP inhibitors. *Cancer Res*. 2012;72:5588-5599. <https://doi.org/10.1158/0008-5472.CAN-12-2753>.
21. Murai J, Huang SY, Renaud A, et al. Stereospecific PARP trapping by BMN 673 and comparison with olaparib and rucaparib. *Mol Cancer Ther*. 2014;13:433-443. <https://doi.org/10.1158/1535-7163.MCT-13-0803>.
22. Shen Y, Aoyagi-Scharber M, Wang B. Trapping poly(ADP-ribose) polymerase. *J Pharmacol Exp Ther*. 2015;353:446-457. <https://doi.org/10.1124/jpet.114.222448>.
23. Zandarashvili L, Langelier MF, Velagapudi UK, et al. Structural basis for allosteric PARP-1 retention on DNA breaks. *Science* 2020;368:eaax6367.
24. Farrés J, Martín-Caballero J, Martínez C, et al. PARP-2 is required to maintain hematopoiesis following sublethal γ -irradiation in mice. *Blood* 2013;122:44-54. <https://doi.org/10.1182/blood-2012-12-472845>.
25. Farres J, Llacuna L, Martín-Caballero J, et al. PARP-2 sustains erythropoiesis in mice by limiting replicative stress in erythroid progenitors. *Cell Death Differ*. 2015;22:1144-1157. <https://doi.org/10.1038/cdd.2014.202>.
26. Zhou JX, Feng LJ, Zhang X. Risk of severe hematologic toxicities in cancer patients treated with PARP inhibitors: a meta-analysis of randomized controlled trials. *Drug Des Devel Ther* 2017;11:3009-3017. <https://doi.org/10.2147/DDDT.S147726>.
27. Elmeligy M, Yu Y, Litton JK, et al. Exposure-safety analyses of talazoparib in patients with advanced breast cancer and germline BRCA1/2 mutations in the EMBRACA and ABRAZO trials. *J Clin Pharmacol*. 2020;60:1334-1343. <https://doi.org/10.1002/jcph.1626>.
28. Hurvitz SA, Gonçalves A, Rugo HS, et al. Talazoparib in patients with a germline BRCA-mutated advanced breast cancer: detailed

- safety analyses from the phase III EMBRACA trial. *Oncologist* 2020;25:e439-e450. <https://doi.org/10.1634/theoncologist.2019-0493>.
29. Litton JK, Rugo HS, Ettl J, et al. Talazoparib in patients with advanced breast cancer and a germline *BRCA* mutation. *N Engl J Med*. 2018;379:753-763. <https://doi.org/10.1056/NEJMoa1802905>.
 30. Turner NC, Telli ML, Rugo HS, et al. A phase II study of talazoparib after platinum or cytotoxic nonplatinum regimens in patients with advanced breast cancer and germline *BRCA1/2* mutations (ABRAZO). *Clin Cancer Res*. 2019;25:2717-2724. <https://doi.org/10.1158/1078-0432.CCR-18-1891>.
 31. Pfizer Inc. Talzenna (talazoparib capsule) prescribing information. 2021. Accessed November 11, 2021. <http://labeling.pfizer.com/ShowLabeling.aspx?id=11046>.
 32. ClinicalTrials.gov. A study of talazoparib in men with DNA repair defects and metastatic castration-resistant prostate cancer. 2017. Accessed March 2, 2022. Available at <https://clinicaltrials.gov/ct2/show/NCT03148795?term=talapro-1&draw=2&rank=1>.
 33. de Bono JS, Mehra N, Scagliotti GV, et al. Talazoparib monotherapy in metastatic castration-resistant prostate cancer with DNA repair alterations (TALAPRO-1): an open-label, phase 2 trial. *Lancet Oncol*. 2021;22:1250-1264. [https://doi.org/10.1016/S1470-2045\(21\)00376-4](https://doi.org/10.1016/S1470-2045(21)00376-4).
 34. Saad F, de Bono J, Barthélémy P, et al. Patient-reported outcomes in men with metastatic castration-resistant prostate cancer harboring DNA damage response alterations treated with Talazoparib: Results from TALAPRO-1. *Eur Urol*. 2022;S0302-2838(22)02407-1. <https://doi.org/10.1016/j.eururo.2022.05.030>.
 35. U.S. Department of Health and Human Services. *Common terminology criteria for adverse events (CTCAE) v4.03*. National Cancer Institute, 2010. Accessed March 2, 2022. Available at https://evs.nci.nih.gov/ftp1/CTCAE/CTCAE_4.03/CTCAE_4.03_2010-06-14_QuickReference_8.5x11.pdf.
 36. Italiano A, Ortholan C, Oudard S, et al. Docetaxel-based chemotherapy in elderly patients (age 75 and older) with castration-resistant prostate cancer. *Eur Urol*. 2009;55:1368-1375. <https://doi.org/10.1016/j.eururo.2008.07.078>.
 37. Sternberg CN, de Bono JS, Chi KN, et al. Improved outcomes in elderly patients with metastatic castration-resistant prostate cancer treated with the androgen receptor inhibitor enzalutamide: results from the phase III AFFIRM trial. *Ann Oncol*. 2014;25:429-434. <https://doi.org/10.1093/annonc/mdt571>.
 38. Boyle HJ, Alibhai S, Decoster L, et al. Updated recommendations of the International Society of Geriatric Oncology on prostate cancer management in older patients. *Eur J Cancer*. 2019;116:116-136. <https://doi.org/10.1016/j.ejca.2019.04.031>.
 39. de Bono J, Ramanathan RK, Mina L, et al. Phase I, dose-escalation, 2-part trial of the PARP inhibitor talazoparib in patients with advanced germline *BRCA1/2* mutations and selected sporadic cancers. *Cancer Discov* 2017;7:620-629. <https://doi.org/10.1158/2159-8290.CD-16-1250>.
 40. de Bono J, Mateo J, Fizazi K, et al. Olaparib for metastatic castration-resistant prostate cancer. *N Engl J Med*. 2020;382:2091-2102. <https://doi.org/10.1056/NEJMoa1911440>.
 41. Smith MR, Scher HI, Sandhu S, et al. Niraparib in patients with metastatic castration-resistant prostate cancer and DNA repair gene defects (GALAHAD): a multicentre, open-label, phase 2 trial. *Lancet Oncol*. 2022;23:362-373. [https://doi.org/10.1016/S1470-2045\(21\)00757-9](https://doi.org/10.1016/S1470-2045(21)00757-9).
 42. Ledermann J, Harter P, Gourley C, et al. Olaparib maintenance therapy in patients with platinum-sensitive relapsed serous ovarian cancer: a preplanned retrospective analysis of outcomes by *BRCA* status in a randomised phase 2 trial. *Lancet Oncol*. 2014;15:852-861. [https://doi.org/10.1016/S1470-2045\(14\)70228-1](https://doi.org/10.1016/S1470-2045(14)70228-1).
 43. Abida W, Campbell D, Patnaik A, et al. Non-*BRCA* DNA damage repair gene alterations and response to the PARP inhibitor rucaparib in metastatic castration-resistant prostate cancer: analysis from the phase II TRITON2 Study. *Clin Cancer Res*. 2020;26:2487-2496. <https://doi.org/10.1158/1078-0432.CCR-20-0394>.
 44. Abida W, Patnaik A, Campbell D, et al. Rucaparib in men with metastatic castration-resistant prostate cancer harboring a *BRCA1* or *BRCA2* gene alteration. *J Clin Oncol*. 2020;38:3763-3772. <https://doi.org/10.1200/JCO.20.01035>.
 45. Agarwal N, Azad A, Shore ND, et al. Talazoparib plus enzalutamide in metastatic castration-resistant prostate cancer: TALA-PRO-2 phase III study design. *Future Oncol*. 2022;18:425-436. <https://doi.org/10.2217/fon-2021-0811>.