

PDF hosted at the Radboud Repository of the Radboud University Nijmegen

The following full text is a publisher's version.

For additional information about this publication click this link.

<https://hdl.handle.net/2066/223478>

Please be advised that this information was generated on 2021-06-18 and may be subject to change.



Identification of ADHD risk genes in extended pedigrees by combining linkage analysis and whole-exome sequencing

Jordi Corominas¹ · Marieke Klein¹ · Tetyana Zayats² · Olga Rivero³ · Georg C. Ziegler³ · Marc Pauper¹ · Kornelia Neveling¹ · Geert Poelmans^{1,4} · Charline Jansch³ · Evgeniy Svirin^{3,5} · Julia Geissler⁶ · Heike Weber^{7,8} · Andreas Reif⁸ · Alejandro Arias Vasquez^{1,9,10} · Tessel E. Galesloot¹¹ · Lambertus A. L. M. Kiemeny¹¹ · Jan K. Buitelaar¹⁰ · Josep-Antoni Ramos-Quiroga^{12,13,14,15} · Bru Cormand^{16,17,18,19} · Marta Ribasés^{12,14,15} · Kristian Hveem^{20,21} · Maiken Elvestad Gabrielsen²⁰ · Per Hoffmann^{22,23,24,25} · Sven Cichon^{24,25,26} · Jan Haavik^{2,27} · Stefan Johansson^{28,29} · Christian P. Jacob⁷ · Marcel Romanos⁶ · Barbara Franke^{1,10} · Klaus-Peter Lesch^{3,5,30}

Received: 8 June 2017 / Revised: 1 May 2018 / Accepted: 18 June 2018 / Published online: 16 August 2018
© The Author(s) 2018. This article is published with open access

Abstract

Attention-deficit/hyperactivity disorder (ADHD) is a common neurodevelopmental disorder with a complex genetic background, hampering identification of underlying genetic risk factors. We hypothesized that combining linkage analysis and whole-exome sequencing (WES) in multi-generation pedigrees with multiple affected individuals can point toward novel ADHD genes. Three families with multiple ADHD-affected members ($N_{\text{total}} = 70$) and apparent dominant inheritance pattern were included in this study. Genotyping was performed in 37 family members, and WES was additionally carried out in 10 of those. Linkage analysis was performed using multi-point analysis in Superlink Online SNP 1.1. From prioritized linkage regions with a LOD score ≥ 2 , a total of 24 genes harboring rare variants were selected. Those genes were taken forward and were jointly analyzed in gene-set analyses of exome-chip data using the MAGMA software in an independent sample of patients with persistent ADHD and healthy controls ($N = 9365$). The gene-set including all 24 genes together, and particularly the gene-set from one of the three families (12 genes), were significantly associated with persistent ADHD in this sample. Among the latter, gene-wide analysis for the *AAEDI* gene reached significance. A rare variant (rs151326868) within *AAEDI* segregated with ADHD in one of the families. The analytic strategy followed here is an effective approach for identifying novel ADHD risk genes. Additionally, this study suggests that both rare and more frequent variants in multiple genes act together in contributing to ADHD risk, even in individual multi-case families.

Introduction

Attention-deficit/hyperactivity disorder (ADHD) is a multifactorial neurodevelopmental disorder, characterized by age-inappropriate inattention, hyperactivity, and increased impulsivity. ADHD is frequent in children, and in up to 60% of the cases impairments persist into adulthood [1]. ADHD presents a high risk for developing co-morbid disorders, increasing the burden on social, educational, and professional aspects of life [2, 3]. Family and twin studies showed that ADHD is highly heritable, both in childhood and in adulthood, with heritability estimates range between 70 and 90% [4–6]. Despite this considerable heritability, the identification of risk genes has been challenging [3, 7], and one reason for this could be the genetic complexity of the disease. Identified candidate genes so far mainly belong to

These authors contributed equally: Jordi Corominas, Marieke Klein.

These authors jointly supervised this work: Barbara Franke, Klaus-Peter Lesch.

Electronic supplementary material The online version of this article (<https://doi.org/10.1038/s41380-018-0210-6>) contains supplementary material, which is available to authorized users.

✉ Barbara Franke
barbara.franke@radboudumc.nl

✉ Klaus-Peter Lesch
kplesch@mail.uni-wuerzburg.de

Extended author information available on the last page of the article

monoaminergic neurotransmitter pathways, especially dopaminergic and serotonergic signaling [8–12]. Different (hypothesis-free) approaches, including genome-wide linkage analyses and genome-wide association studies (GWASs), have been performed in order to detect additional genetic factors for ADHD. In line with the ‘common disease-common variant’ model, mostly common genetic factors have been investigated, which generally convey very small effect sizes [3]. However, GWASs of ADHD are only just reaching sufficiently large samples sizes to produce genome-wide significant results. Linkage analysis, a method useful for identification of genetic risk factors of larger effect size using family data, has also contributed to the identification of risk loci for ADHD. A meta-analysis of linkage studies in ADHD reported a significant region in the distal part of chromosome 16q [13]. Within this region, the *CDH13* gene was repeatedly found among the top-findings in GWASs [14]. In addition, linkage analysis in families from a genetic isolate in combination with association testing identified the *ADGRL3/LPHN3* gene as an ADHD risk factor [15, 16]. More evidence for involvement of less frequent genetic variants with potentially larger effect sizes comes e.g. from genome-wide studies of copy number variants (CNVs) [17–21] and initial exome-chip [22] and whole-exome sequencing (WES) work [23, 24]. In addition, WES has been successful in identifying rare risk alleles for other neurodevelopmental/psychiatric disorders, such as autism spectrum disorders (ASDs) and schizophrenia (e.g. [25, 26]).

In this study, we explored whether a combination of linkage analysis and WES in large multi-generational pedigrees is a viable approach to gene-finding in ADHD. We narrowed down the search area for rare variants by linkage analysis in three multi-generation pedigrees with multiple ADHD-affected members. Based on the WES applied to subsets of family members, we selected rare variants present in all (suggestive) linkage regions in each family. In line with the polygenic nature of ADHD, in which both common and rare genetic variants are likely to contribute to disease etiology, we subsequently used the extracted gene-sets to analyze the cumulative role of common and rare variants in persistent ADHD in an independent exome-chip data set (IMpACT consortium; $N = 9365$ [22]).

Table 1 Summary of the families included in this study

Family	Total	Affected	Unaffected	Unknown	WES	Genotyping
P1	11	9	1	1	5	7
P2	29	15	6	8	2	15
P3	30	17	8	5	3	15

WES whole-exome sequencing; genotyping indicates the number of family members with available genome-wide genotyping data for linkage analyses

Materials and methods

Study participants

Multigenerational pedigrees

The study included three multi-generational families with multiple ADHD affected individuals ($N_{\text{total}} = 70$, $N_{\text{ADHD}} = 41$). The structure of the three families (Pedigree 1–3; P1–P3) is summarized in Table 1 and shown in Supplementary Figure 1. All families were of German origin and were ascertained through affected children referred to the outpatient clinic of the Department of Child and Adolescent Psychiatry and Psychotherapy, University Hospital Würzburg, Germany. For the index-child, strict inclusion and exclusion criteria were applied. Included index-children were aged ≥ 6 years and met criteria for ADHD combined subtype according to DSM-IV. Index-children had a birth weight >2000 g and Intelligence Quotient (IQ) > 80 , did not show any neurological or severe somatic disorder, drug abuse or ASDs, and did not receive psychotropic medication (except for stimulant medication for ADHD). Detailed description of the diagnostic procedure for family members was reported previously [27]. The study was approved by the Ethics Committee of the Julius-Maximilians-University of Würzburg. Written informed consent was obtained from all participating individuals.

Exome-chip data set

The data set, which did not include members of the families above, was genotyped on the Infinium Human CoreExome chip (Illumina, San Diego, CA, USA) and comprised 1846 adults with persistent ADHD and 7519 controls recruited from four different countries: Spain (615 cases and 932 controls), Norway (597 cases and 2598 controls), Germany (340 cases and 2 286 controls), and The Netherlands (294 cases and 1703 controls). Part of the Dutch controls were derived from the Nijmegen Biomedical Study (NBS, www.nijmegenbiomedischestudie.nl), a population-based survey conducted by the Departments of Epidemiology & Biostatistics and Clinical Chemistry of the Radboud University Medical Center [28]. Part of the Norwegian controls were derived from The Nord-Trøndelag Health Study (The HUNT study), a large population-based cohort [29]. Part of

the German controls were derived from the Heinz–Nixdorf–Recall cohort, a large population-based cohort [30]. Persistent adult ADHD was diagnosed according to DSM-IV criteria. A detailed description of all samples and (genotyping) procedures was recently published [22], and a shortened version is included in the Supplementary Methods. ADHD cases were of European descent and were part of the International Multicenter persistent ADHD Collaboration (IMpACT [31]). The study was approved by the Ethics Committees of the respective universities and/or hospitals. All participants signed informed consent.

Single-nucleotide polymorphism (SNP) genotyping and linkage analysis

Genome-wide SNP genotyping was performed on Affymetrix Genome-Wide Human SNP Array 6.0 (Affymetrix, Santa Clara, CA, USA). Microarray quality control parameters and genotype calls were generated with Affymetrix Genotyping Console v4.2.0.26 software (call rate > 0.99). Individuals were excluded if their call rate was below 97%. Genotyping data were filtered by removing SNPs with minor allele frequency (MAF) < 5%, missing genotypes > 5%, Mendelian errors > 10% for variants, or deviations from Hardy–Weinberg equilibrium (HWE, $P \leq 10^{-6}$). The remaining 665,362 SNPs were pruned to reduce linkage disequilibrium (LD) between markers using PLINK v1.07 software (<http://pngu.mgh.harvard.edu/purcell/plink/> [32]) with pairwise $R^2 > 0.01$ in sliding windows of 50 SNPs, moving in intervals of five SNPs. In total, 10,842 autosomal SNPs were included in the linkage analyses.

Multi-point linkage analyses of genome-wide SNP data were performed using Superlink Online SNP 1.1 [33], which can handle large pedigrees. Through parametric analysis, we computed logarithm of odds (LOD) scores using groups of markers with a window size of 10 markers. Based on the phenotypic characteristics of the pedigrees, a dominant model was specified with an allele frequency of 0.01 and a penetrance value of 0.99. The significance level was set at a LOD score of 3.3, but a score ≥ 2 was used to select candidate regions for further analyses (Supplementary Figure 2). The linked regions were bounded using 1 LOD-score intervals upstream and downstream from the marker with the highest LOD-score. Haplotypes of the regions of interest were constructed by using the haplotyping tool of Superlink Online SNP 1.1³³.

Whole-exome sequencing

For each family, two or more affected family members were strategically selected for WES based on meiotic distance and/or position in the pedigree (Table 1 and

Supplementary Figure 1). Genomic DNA was extracted from blood samples according to standard protocols [27]. The exome was targeted by Agilent Sure Select Human All Exon 50 Mb Target Enrichment kit (Agilent Technologies, Santa Clara, CA, USA) and sequenced by single-end sequencing on the 5500x1 SOLiD™ System (Life Technologies, Carlsbad, CA, USA). High quality reads were mapped to the hg19 reference genome (UCSC genome browser) using the Lifescope 2.1 software (<http://www.lifetechnologies.com/lifescopes/>) with default parameters. In addition, the SOLiD Lifescope Software v2.1 was used to call single-nucleotide variants (SNVs) using the diBayes algorithm. Variant annotation was done at the Department of Human Genetics of the Radboud university medical center using a pipeline developed in-house [34]. Variants were selected according to the following criteria: (i) variants with ≥ 20 reads, (ii) variants with a MAF < 1% in dbSNP (<http://www.ncbi.nlm.nih.gov/SNP/>), and (iii) variants present in all sequenced family members. Functional effects of variants were predicted by three different softwares: SIFT [35], PolyPhen-2 [36], and MutationTaster [37]. Conservation of variants was estimated by PhyloP [38] and Grantham score [39].

Gene-based and gene-set analyses in the exome-chip data set

The cumulative effect of common and rare variants in selected genes and gene-sets was tested using the independent, recently published IMpACT exome-chip data set (Supplementary Methods; [22]). Statistical analyses were performed using the Multi-marker Analysis of GenoMic Annotation (MAGMA) software package (version 1.02; <http://ctglab.nl/software/magma> [40]) and the SNP-wide mean model for gene-based association analysis (for detailed description see Supplementary Methods). Importantly, all data sets (Spanish, Norwegian, German, and Dutch) were analyzed individually, followed by meta-analysis on the level of gene-based statistics. Fixed effects were used to perform meta-analysis by using the square root of the sample sizes as weights. An LD correction was applied, based on the estimates of the 1000 genome phase 1 European ancestry samples [41]. Data were analyzed following a step-wise approach (see also Supplementary Figure 2): first, an overall gene-set was created, including all genes identified by the approach described above (24 genes). We tested whether all genes together were jointly as a gene-set associated with persistent ADHD. Post hoc to the analysis of the overall gene-set, we also tested family-specific gene-sets to localize the effect. Subsequently, we performed a gene-based look-up of genes from family P2 (12 genes), and genes were considered gene-wide

Table 2 List of candidate regions and genes selected based on the linkage analysis in each family

Family	LR selected	Genes with rare variants in WES	Gene-set analysis	
			$P_{\text{self-contained}}$	$P_{\text{competitive}}$
P1	8:118608158–124649389	----	0.2838	0.4512
	9:7754113–15568230	<i>TYRP1, FREM1</i>		
	9:97466973–102213749	----		
	11:115218677–120365028	<i>NXPE1, TMEM25, HYOU1, VPS11, ABCG4, CCDC153</i>		
	16:63079319–66386711	<i>HSF4</i>		
	16:81159781–83154022	<i>DYNLRB2, PKD1L2, PLCG2, OSGIN1, MBTPS1</i>		
P2	8:118608158–124649389	<i>DEPTOR, ATAD2</i>	0.0066	0.0042
	9:7754113–15568230	<i>PTPRD, TYRP1, FREM1</i>		
	9:97466973–102213749	<i>HSD17B3, AAED1, ANP32B^a, TBC1D2</i>		
	10:56177098–58789387	<i>PCDH15</i>		
	10:64668048–65875491	----		
	11:21968768–29134515	<i>ANO3</i>		
	11:115218677–120365028	<i>BUD13, VPS11</i>		
	13:106701406–109091885	----		
	16:63079319–66386711	----		
P3	6:203878–460901	----	0.1368	0.1393
	6:3446942–4470581	----		
	9:97466973–102213749	----		
	10:14311273–15844850	----		
	10:64668048–65875491	----		
	11:115218677–120365028	<i>BUD13, TMEM25, VPS11</i>		
	13:106701406–109091885	----		
	16:63079319–66386711	<i>CDH5</i>		
	16:81159781–83154022	<i>MBTPS1</i>		

Genes were included if they were present in the linkage region (LR; ± 1 Mb) with $\text{LOD} \geq 2$, to which the family was contributing and if they harbored a rare variant (according to our selection criteria).

^aNo variants were observed in the *ANP32B* gene in IMPACT exome-chip data. Gene-set-based association analysis used meta-analytic exome-chip data from 9365 individuals (1846 ADHD patients and 7519 controls [22]).

significant, if they reached the Bonferroni-corrected threshold adjusted for the number of genes within the gene-set (12 tests; $P < 0.0042$).

Gene Ontology enrichment analysis

To assess whether the 12 prioritized genes from family P2 converge on biological shared functions, we tested for enrichment in Gene Ontology (GO) terms for biological processes using FUMA [42]. Overrepresentation of biological functions of prioritized genes was tested for by comparison with gene-sets obtained from the Molecular Signature Database (MsigDB) v5.2 (i.e., GO gene sets), using hypergeometric tests. The sets of background genes were derived from 19,264 protein-coding genes. Benjamini–Hochberg correction (FDR) was used for

multiple test correction method for gene-set enrichment testing. Gene-set enrichments were considered significant at an adjusted P -value level < 0.05 .

Segregation analysis in family P2

To validate the presence of selected rare variants in the two sequenced individuals and to allow segregation analysis, all individuals of family P2 were genotyped for chr9:99404124G>C (rs151326868) and chr8:124346225T>C using PCR-based DNA sequencing. The locus of interest was amplified by conventional PCR and sequenced by direct Sanger sequencing (details and primer sequences are available upon request). Data obtained for the two variants were used to analyze the segregation with ADHD diagnosis.

Results

Linkage analysis across three families with ADHD

The main aim of the linkage analyses was to provide an additional filtering step for the WES data by narrowing down the genomic regions of interest. Linkage analysis was performed for each family individually, but also for all possible combinations of the three families. Informative individuals from each family were enrolled in the linkage study: nine individuals from family P1, 19 individuals from family P2, and 16 individuals from family P3 (Supplementary Figure 1). A total of 13 linkage regions with LOD-score ≥ 2 on chromosomes 6, 8, 9, 10, 11, 13, and 16 were identified (Supplementary Table 1, Supplementary Figures 3 and 4), and all were taken forward for subsequent analyses. Several significantly linked regions were observed by analyzing families together. The highest LOD scores (3.99 and 3.79) were located on chromosome 16 in the analysis combining P1 and P3 (Supplementary Table 1, Supplementary Figures 3 and 4). In family P1, six linkage regions were selected (LOD-score ≥ 2) for further analyses, but all of them needed the contribution of at least one additional family to reach significance. In family P2, nine linkage regions were identified, three of which specific to this family, and in family P3, nine linkage regions were identified of which five were specific to this single family (all linkage regions with LOD-score ≥ 2 ; Table 2 and Supplementary Table 1).

Whole-exome sequencing analysis

A total of ten ADHD-affected family members were included in WES: five from family P1 (ID1, ID2, ID4, ID5, and ID11), two from family P2 (ID21 and ID26), and three from family P3 (ID17, ID19, and ID20) (Supplementary Figure 1). We obtained an average of 5.46 billion bases of sequence per individual and about 82.2% (~4.49 billion bp) of the total bases mapped to the exomes, with a mean of 85-times coverage (for WES sequencing statistics per individual see Supplementary Table 1). Based on our selection criteria, the average number of shared rare variants present in each family was 1235 across the exome. Applying filtering based on the identified linkage regions, a total of 20 variants were selected from family P1, 13 variants from family P2, and five variants from family P3 (Supplementary Table 3).

Association analyses and candidate gene identification in an independent sample

All genes within linkage regions containing at least one of the selected rare variants were included in a list of candidate genes (Table 2). Gene-set analysis was performed based on this list using exome-chip data from an independent sample

of 1846 adults with persistent ADHD and 7519 controls [22]. Following testing of the overall gene-set (24 genes), we also tested gene-sets resulted from each family separately (Table 2). Meta-analysis of the individual exome-chip samples showed significant association of the overall gene-set in both self-contained and competitive tests ($P_{\text{self-contained}} = 0.0063$ and $P_{\text{competitive}} = 0.0103$, Table 2). The significant effect of the general gene-set was mainly driven by the effect of genes selected based on the linkage analyses in family P2 ($P_{\text{self-contained}} = 0.0066$ and $P_{\text{competitive}} = 0.0042$, 12 genes, Table 2), with additional minor contributions of the gene-sets resulting from the linkage analysis in the other two families (Supplementary Table 4). Focusing on individual genes of the P2 gene-set, gene-based analysis revealed that the *AAEDI* gene was significantly associated with persistent ADHD ($P = 0.0039$). Another gene in this gene set—*ATAD2*—yielded suggestive significance after correction for multiple testing ($P = 0.0072$, Table 3). For both genes, association was driven entirely by rare variants (Supplementary Tables 5 and 6).

To assess whether the 12 prioritized genes of the family P2 gene-set converged on biological functions or pathways, we tested for enrichment in GO terms (biological processes). Four significantly enriched GO-terms were detected, including ‘regulation of vesicle fusion’ ($P_{\text{adjusted}} = 0.0166$) and ‘cell–cell adhesion via plasma membrane adhesion molecules’ ($P_{\text{adjusted}} = 0.0328$) (Supplementary Figure 5).

Single variant validation and familial segregation analysis

Going back to the WES data of family P2, one rare missense variant was identified in both candidate genes

Table 3 Gene-based association results for the family P2 gene-set using IMPACT exome-chip data of 9365 individuals (1846 ADHD patients and 7519 controls; [22])

Gene	<i>N</i> variants	<i>P</i>
<i>AAEDI</i>	5	0.0039 ^a
<i>ATAD2</i>	5	0.0072
<i>BUD13</i>	11	0.0136
<i>ANO3</i>	9	0.1308
<i>DEPTOR</i>	6	0.2279
<i>TYRP1</i>	8	0.2824
<i>TBC1D2</i>	12	0.3181
<i>VPS11</i>	9	0.3258
<i>PCDH15</i>	27	0.3434
<i>PTPRD</i>	28	0.6350
<i>HSD17B3</i>	5	0.7097
<i>FREMI</i>	23	0.9460

^aSignificant association after Bonferroni correction (12 tests, $P < 0.00417$).

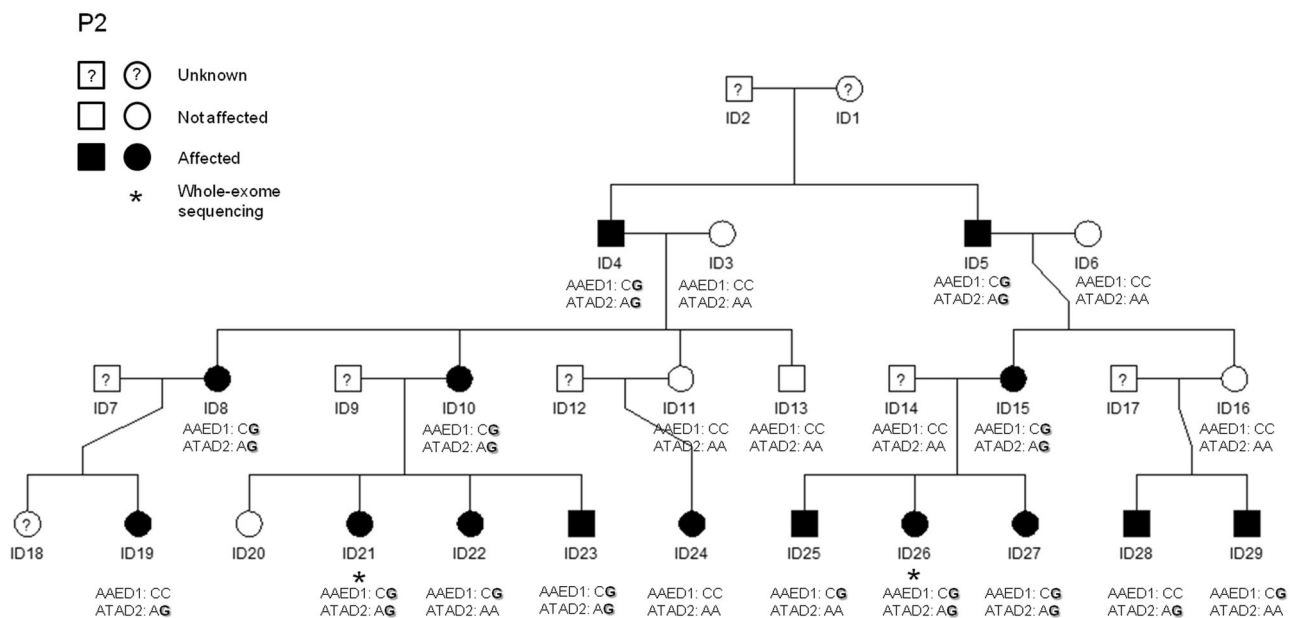


Fig. 1 Segregation analysis for rs151326868 (chr9:99404124G>C; *AAEDI* gene) and the SNV at chr8:124346225T>C (*ATAD2* gene) in family P2. ADHD-affected individuals are depicted by black symbols, unaffected family members are shown by white symbols and

individuals with unknown ADHD status are represented by a question mark in the symbol. An asterisk beneath an individual indicates that DNA was used for whole-exome sequencing analysis. Non-reference alleles are depicted in bold.

(*AAEDI* and *ATAD2*) from the gene-based analysis. The variant rs151326868, located in *AAEDI* (chr9:99404124G>C), was predicted to be deleterious in all pathogenicity tests (PolyPhen2, SIFT, and MutationTaster), was highly conserved (PhyloP>2.7 and Grantham score >80; Supplementary Table 7), and rare (MAF = 4.38×10^{-4} in the ExAC browser). The SNV chr8:124346225T>C in *ATAD2* was predicted to be deleterious only by MutationTaster, showed low conservation scores, and had very low MAF in the ExAC browser (8.24×10^{-06} ; Supplementary Table 7). The variant rs151326868 in *AAEDI* was also present in the exome-chip data (exome-chip marker exm764638; Supplementary Tables 5 and 6), the SNV chr8:124346225T>C in *ATAD2* was not.

Sanger sequencing of these two rare variants in *AAEDI* and *ATAD2* in all members of family P2 for whom DNA was available confirmed the presence of these variants in the two sequenced individuals and allowed segregation analysis. None of the healthy individuals carried either of the variants, 93% of the affected individuals (14/15) carried at least one of the two variants, and 60% of the affected individuals (9/15) carried both variants (Fig. 1).

Discussion

In this study, we aimed to identify novel genetic risk factors for ADHD by combining linkage analyses and WES in multi-generation families. We predicted that through a

family-based approach, we would be able to limit genetic heterogeneity, since rare variants with potentially higher penetrance may cause the disorder in familial ADHD cases. Linkage analyses revealed four genomic regions with a LOD score ≥ 3.3 and 15 additional regions with a LOD score ≥ 2 . Within these regions, we identified 38 rare variants within 25 genes across the three families. All genes together, and particularly the gene-set from family P2, were significantly associated with persistent ADHD in the independent exome-chip sample. Moreover, the *AAEDI* gene reached gene-wide significance in that sample, and a rare variant in *AAEDI* (rs151326868) segregated with ADHD in family P2.

Different designs can be used for WES studies aiming at identifying rare variants linked to complex diseases. In schizophrenia [26] and ASDs [43–45], large sample sizes of cases and controls have been used to find genes implicated in disease through rare variants in multiple patients. For ADHD, data sets have not yet reached the critical size to allow for a genome-wide, hypothesis-free analysis of WES data, but an initial study analyzed a pre-defined gene-set of interest and found evidence for enrichment of rare variants in cases [23]. A second approach, that has successfully been applied in other neurodevelopmental disorders, especially in ASDs [44, 46], is a trio-approach in sporadic patients and their parents. In this approach, one is assuming that the occurrence of the disorder in the patient is due to a de novo mutation. In ADHD, this design may seem less promising since the disorder does not reduce reproductive fitness as it

does in ASDs [47] and, therefore, sporadic cases are less frequently described and familial aggregation of ADHD is frequently observed [48]. However, recent evidence from Swedish population registries suggests that ADHD risk is strongly increased in the offspring of fathers older than 45 years [49], which seems to be linked to an age-related increasing mutation rate in the paternal germline [50]. Our own work also suggests that the cognitive profile of families with only one affected individual differs from that of families with more cases [51, 52], which may suggest that the trio-design could also be successful in ADHD. The third design, which we employed in the current study, is the extended pedigree-based approach, in which one screens for segregation of rare variants with disease across multiple affected individuals. Knowledge on the etiology of ADHD is, however, still limited, and therefore, ranking and prioritization of potential candidate genes is challenging. With this in mind, our combined linkage and WES approach did help to efficiently limit the list of potentially causative variants in a data-driven way. Filtering WES variants by linkage analysis has earlier been shown to be an effective tool for prioritizing common and exome variants in extended families with ADHD [14] or ASD [53].

We extended the family-based approach by testing the effects of observed genes carrying rare variants in an independent, large sample of exome-chip data. Importantly, most of the selected rare variants in the genes included in the gene-set analysis of family P2 are exonic and non-synonymous variants, so the overall result in the case-control analyses would not be affected by more stringent selection criteria for rare variants that are frequently used in WES studies (e.g., being functionally relevant). Specifically, the significant gene-based association of *AAEDI* would remain. Utilizing this independent sample, we showed that (some of the) identified genes may be relevant to ADHD in the population, thereby generalizing the findings from the single family. This approach also enabled us to study the cumulative effect of rare and common genetic variants in the identified candidate genes for association with persistent ADHD, maximizing power to find association by taking into account allelic heterogeneity [8, 22].

Importantly, our work supports the notion that—despite the apparent dominant segregation pattern - ADHD is not a monogenic disorder in the pedigrees investigated. Linkage analyses revealed several (suggestive) signals per family, suggesting that several genes/loci may carry risk variants for ADHD in each of those. Based on the linkage analyses, we did not expect a single gene or single locus to be associated with the clinical phenotype nor perfect cosegregation pattern of the rare, non-reference allele with ADHD in subsequent segregation analyses. A main contributing factor to the observed patterns may be assortative

mating, which is common in ADHD [54] (and e.g. present in family P1). Although we were quite liberal in selecting regions for further analysis (through including suggestive linkage signals), the observed pattern is similar to findings in previous linkage studies of ADHD [13, 14] and other neurodevelopmental disorders (e.g., for ASDs [53]).

The prioritized genes in the gene-set of family P2 converged on the biological function of vesicle fusion, which adds to the relevance of our findings, since the process of vesicle fusion to plasma (e.g., synaptic) membrane is closely related to the mechanism of neurotransmitter release. The *AAEDI* gene (coding for the AhpC/TSA Antioxidant Enzyme Domain Containing 1 protein) was significantly associated with persistent ADHD in the exome-chip sample, and the rare variant in this gene (rs151326868; MAF for C-allele in ExAC = 4.38×10^{-4}) segregated with ADHD risk in family P2. AAED1 strongly binds and interacts with the Protein Kinase C-Alpha-Binding Protein (PICK1) [55]. PICK1 binds to the dopamine transporter (DAT), more specifically to its carboxyl terminus, and is an important regulator of DAT trafficking in presynaptic sites of dopaminergic neurons [56]. Additionally, a direct and functional interaction between PICK1 and dopamine D₃ receptors (D₃R) has been reported [57]. Furthermore, PICK1 has a role in glutamate receptor regulation [58], and a recent study revealed that a glutamate gene-set showed association with the severity of hyperactivity/impulsivity in an ADHD case-only sample [59]. In addition, adult *Pick1* knockout mice show several behavioral abnormalities, such as hyperactivity and electrophysiological deficits in the prefrontal cortex [60]. With the prominent involvement of dopamine regulation in ADHD, as e.g. the dopaminergic system plays an important role in planning and initiation of motor responses, activation, switching, reaction to novelty, and reward processing [3], these molecular findings suggest a link between genetic variation in *AAEDI*, dopaminergic and glutamatergic signaling, and ADHD risk. Thus, studies of the *AAEDI* variant's functional impact in carrier-derived neurons of dopaminergic and glutamatergic specification, which have been differentiated from induced pluripotent stem cells (iPSCs), are currently being conducted (E. Svirin & K.P. Lesch, unpublished results).

Our combined approach of linkage and WES also identified a rare genetic variant in the *ATAD2* gene, coding for the ATPase family AAA domain-containing protein 2, and gene-based analysis of this gene revealed suggestive association with persistent ADHD. However, a neuronal function of this gene has not been described yet.

The findings described here need to be interpreted in light of several strengths and limitations. Although we considered only three families, we identified *AAEDI* as a novel ADHD candidate gene, showing that combining linkage analysis and WES can be an efficient strategy to

prioritize ADHD-associated genes/variants. In contrast to previous studies focusing on pre-defined gene-sets [23, 61], we performed an exome-wide search for rare variants. Additionally, we validated the association of the newly identified ADHD risk genes in an independent sample. However, two main types of genetic variation, which may have helped us to find contributing genes in families P1 and P3, remained unstudied. Firstly, genetic variation located in intronic and intergenic regions may be discovered by using whole-genome sequencing approaches. Alternatively, common variants in regulatory regions close to the genes of interest may be imputed and then included in association analyses. Since we know from studies in other psychiatric disorders that many risk variants are located within regulatory regions [62], genetic variation in those regions probably also contributes to the genetic architecture of ADHD. Secondly, CNVs could play a role in the etiology of ADHD, since prior studies have noted an enrichment of large CNVs in ADHD cases [17, 20, 63, 64], particularly in genes related to neurodevelopment [21]. Moreover, future studies may aim to integrate data from both rare variants and the common polygenic load in those families, in order to obtain a more complete picture on the genetic architecture of ADHD in the individual families.

In conclusion, we provide evidence for the role of rare variants in protein-coding genes in the etiology of ADHD. Our data adds to the notion that less frequent variants provide an additional source of relevant genetic risk factors, which received little attention in ADHD genetics so far. Moreover, we show that genes harboring rare genetic variants in individual families are associated with persistent ADHD in an independent sample. Therefore, this study suggests that the combination of linkage analyses and WES provides a practical approach for gene identification in genetically complex neurodevelopmental disorders, such as ADHD.

Acknowledgements We wish to thank all participants who took part in the study. We are grateful to S. Gross and M. Dona for the assistance in the recruitment and phenotypic characterization of families and to N. Schraud and G. Ortega for their technical expertise. This study is part of the International Multicentre persistent ADHD Collaboration (IMpACT; www.impactadhdgenomics.com). IMpACT unites major research centers working on the genetics of ADHD persistence across the lifespan and has participants in the Netherlands, Germany, Spain, Norway, The United Kingdom, The United States, Brazil, and Sweden. Principal investigators of IMpACT are: Barbara Franke (chair), Andreas Reif (co-chair), Stephen V. Faraone, Jan Haavik, Bru Cormand, Antoni Ramos-Quiroga, Philip Asherson, Klaus-Peter Lesch, Jonna Kuntsi, Claiton H. D. Bau, Jan Buitelaar, Stefan Johansson, Henrik Larsson, Alys Doyle, and Eugenio H. Grevet. This work was partly carried out on the Dutch national e-infrastructure with the support of the SURF Foundation. Barbara Franke and her team are supported by funding from a personal Vici grant of the Netherlands Organisation for Scientific Research (NWO; grant 016-130-669, to BF), from the European Community's Seventh Framework Programme (FP7/2007–2013) under grant agreements no. 602805

(Aggressotype), no. 602450 (IMAGEMEND), and no. 278948 (TACTICS), and from the European Community's Horizon 2020 Programme (H2020/2014–2020) under grant agreements no. 643051 (MiND) and no. 667302 (CoCA). In addition, this work was supported by the European College of Neuropsychopharmacology (ECNP Network "ADHD across the Lifespan"). Klaus-Peter Lesch and his team are supported by the Deutsche Forschungsgemeinschaft (DFG: CRU 125, CRC TRR 58 A1/A5), European Community (EC: AGGRESOTYPE FP7/No. 602805; Fritz Thyssen Foundation (No. 10.13.1185), ERA-Net NEURON/RESPOND, No. 01EW1602B, and 5–100 Russian Academic Excellence Project. The Nijmegen Biomedical Study is a population-based survey conducted at the Department for Health Evidence and the Department of Laboratory Medicine of the Radboud University Medical Center. Principal investigators of the Nijmegen Biomedical Study are L.A.L.M. Kiemeny, A.L.M. Verbeek, D.W. Swinkels, and B. Franke. The NBS exome chip data were generated in a research project that was financially supported by BBMRI-NL, a Research Infrastructure financed by the Dutch government (NWO 184.021.007). The Heinz Nixdorf Recall (HNR) study is supported by the Heinz Nixdorf Foundation (Germany). Additionally, the study is funded by the German Ministry of Education and Science and the German Research Council (DFG; Project SI 236/8-1, SI236/9-1, ER 155/6-1). We are extremely grateful to all investigators who contributed to the generation of this dataset. Bru Cormand is supported by the Spanish 'Ministerio de Economía y Competitividad' (SAF2015-68341-R) and by AGAUR, 'Generalitat de Catalunya' (2014SGR932). MR is a recipient of a Miguel de Servet contract from the Instituto de Salud Carlos III, Ministerio de Economía, Industria y Competitividad, Spain (CP09/00119 and CPII15/00023). Her work is also supported by Instituto de Salud Carlos III (PI12/01139, PI14/01700, PI15/01789, PI16/01505), and cofinanced by the European Regional Development Fund (ERDF), Agència de Gestió d'Ajuts Universitaris i de Recerca-AGAUR, Generalitat de Catalunya (2014SGR1357), Departament de Salut, Generalitat de Catalunya, Spain, and a NARSAD Young Investigator Grant from the Brain & Behavior Research Foundation. Jan Haavik and his team are supported by the K.G. Jebsen Foundation for Medical Research, University of Bergen, the Western Norwegian Health Authorities (Helse Vest). The Nord-Trøndelag Health Study (The HUNT Study) is a collaboration between the HUNT Research Centre (Faculty of Medicine, Norwegian University of Science and Technology, NTNU), the Nord-Trøndelag County Council, the Central Norway Health Authority and the Norwegian Institute of Public Health. SC is supported by the German Federal Ministry of Education and Research (BMBF) through the Integrated Network IntegraMent (Integrated Understanding of Causes and Mechanisms in Mental Disorders) under the auspices of the eMed Program (grant 01ZX1314A). He also receives support by the Swiss National Science Foundation (project no. 310030_156791). This publication was funded by the German Research Foundation (DFG) and the University of Wuerzburg in the funding programme Open Access Publishing.

Author contributions The study was initiated and directed by KPL and BF. MRo, JG, and CPJ ascertained and clinically characterized the families. JC, MK, and TZ conducted the statistical analyses. KN carried out the exome sequencing, and MP and GP provided bioinformatics input. Analysis of family data, genotyping validations and downstream data analyses were performed by KPL, AR, CJ, OR, GCZ, HW, and co-workers. BF, KPL, and AAV made substantial contribution to the analysis and interpretation of data. JC and MK wrote the first draft of the manuscript with critical input from BF and KPL. TEG, LK, JB, JH, SJ, JARQ, MRi, BC, AR, ES, KPL, BF, JB, KH, ME, and SC contributed data. BF and KPL provided funding for the project. All co-authors provided critical feedback on the manuscript and approved the final version of the manuscript.

Compliance with ethical standards

Conflict of interest BF received educational speaking fees from Merz and Shire. KPL served as a speaker for Eli Lilly and received research support from Medice, as did AR, all outside the submitted work. JH received speaker fees from Eli Lilly, HB Pharma, and Shire. In the past 3 years, JKB has been a consultant to/member of advisory board of/and/or speaker for Janssen Cilag BV, Eli Lilly, Lundbeck, Shire, Roche, Medice, Novartis, and Servier. He has received research support from Roche and Vifor. He is not an employee of any of these companies, and not a stock shareholder of any of these companies. He has no other financial or material support, including expert testimony, patents, royalties. All other authors report no biomedical financial interests or potential conflicts of interest.







Open Access This article is licensed under a Creative Commons Attribution 4.0 International License, which permits use, sharing, adaptation, distribution and reproduction in any medium or format, as long as you give appropriate credit to the original author(s) and the source, provide a link to the Creative Commons license, and indicate if changes were made. The images or other third party material in this article are included in the article's Creative Commons license, unless indicated otherwise in a credit line to the material. If material is not included in the article's Creative Commons license and your intended use is not permitted by statutory regulation or exceeds the permitted use, you will need to obtain permission directly from the copyright holder. To view a copy of this license, visit <http://creativecommons.org/licenses/by/4.0/>.

References

- Faraone SV, Biederman J, Mick E. The age-dependent decline of attention deficit hyperactivity disorder: a meta-analysis of follow-up studies. *Psychol Med*. 2006;36:159–65.
- Biederman J. Impact of comorbidity in adults with attention-deficit/hyperactivity disorder. *J Clin Psychiatry*. 2004;65(Suppl 3):3–7.
- Faraone SV, Asherson P, Banaschewski T, Biederman J, Buitelaar JK, Ramos-Quiroga JA, et al. Attention-deficit/hyperactivity disorder. *Nat Rev Dis Prim*. 2015;1:15020.
- Faraone SV, Perlis RH, Doyle AE, Smoller JW, Goralnick JJ, Holmgren MA, et al. Molecular genetics of attention-deficit/hyperactivity disorder. *Biol Psychiatry*. 2005;57:1313–23.
- Larsson H, Chang Z, D'Onofrio BM, Lichtenstein P. The heritability of clinically diagnosed attention deficit hyperactivity disorder across the lifespan. *Psychol Med*. 2014;44:2223–9.
- Chang Z, Lichtenstein P, Asherson PJ, Larsson H. Developmental twin study of attention problems: high heritabilities throughout development. *JAMA Psychiatry*. 2013;70:311–8.
- Franke B, Faraone SV, Asherson P, Buitelaar J, Bau CH, Ramos-Quiroga JA, et al. The genetics of attention deficit/hyperactivity disorder in adults, a review. *Mol Psychiatry*. 2012;17:960–87.
- Bralten J, Franke B, Waldman I, Rommelse N, Hartman C, Asherson P, et al. Candidate genetic pathways for attention-deficit/hyperactivity disorder (ADHD) show association to hyperactive/impulsive symptoms in children with ADHD. *J Am Acad Child Adolesc Psychiatry*. 2013;52:1204–12.e1.
- Franke B, Vasquez AA, Johansson S, Hoogman M, Romanos J, Boreatti-Hummer A, et al. Multicenter analysis of the SLC6A3/DAT1 VNTR haplotype in persistent ADHD suggests differential involvement of the gene in childhood and persistent ADHD. *Neuropsychopharmacology*. 2010;35:656–64.
- Gizer IR, Ficks C, Waldman ID. Candidate gene studies of ADHD: a meta-analytic review. *Hum Genet*. 2009;126:51–90.
- Weber H, Kittel-Schneider S, Heupel J, Weissflog L, Kent L, Freudenberg F, et al. On the role of NOS1 ex1f-VNTR in ADHD-allelic, subgroup, and meta-analysis. *Am J Med Genet B Neuropsychiatr Genet*. 2015;168:445–58.
- Wu J, Xiao H, Sun H, Zou L, Zhu LQ. Role of dopamine receptors in ADHD: a systematic meta-analysis. *Mol Neurobiol*. 2012;45:605–20.
- Zhou K, Dempfle A, Arcos-Burgos M, Bakker SC, Banaschewski T, Biederman J, et al. Meta-analysis of genome-wide linkage scans of attention deficit hyperactivity disorder. *Am J Med Genet B Neuropsychiatr Genet*. 2008;147B:1392–8.
- Lesch KP, Timmesfeld N, Renner TJ, Halperin R, Roser C, Nguyen TT, et al. Molecular genetics of adult ADHD: converging evidence from genome-wide association and extended pedigree linkage studies. *J Neural Transm*. 2008;115:1573–85.
- Arcos-Burgos M, Jain M, Acosta MT, Shively S, Stanescu H, Wallis D, et al. A common variant of the latrophilin 3 gene, LPHN3, confers susceptibility to ADHD and predicts effectiveness of stimulant medication. *Mol Psychiatry*. 2010;15:1053–66.
- Ribases M, Ramos-Quiroga JA, Sanchez-Mora C, Bosch R, Richarte V, Palomar G, et al. Contribution of LPHN3 to the genetic susceptibility to ADHD in adulthood: a replication study. *Genes Brain Behav*. 2011;10:149–57.
- Lesch KP, Selch S, Renner TJ, Jacob C, Nguyen TT, Hahn T, et al. Genome-wide copy number variation analysis in attention-deficit/hyperactivity disorder: association with neuropeptide Y gene dosage in an extended pedigree. *Mol Psychiatry*. 2011;16:491–503.
- Merker S, Reif A, Ziegler GC, Weber H, Mayer U, Ehls AC, et al. SLC2A3 single-nucleotide polymorphism and duplication influence cognitive processing and population-specific risk for attention-deficit/hyperactivity disorder. *J Child Psychol Psychiatry*. 2017;58:798–809.
- Thapar A, Martin J, Mick E, Arias Vasquez A, Langley K, Scherer SW, et al. Psychiatric gene discoveries shape evidence on ADHD's biology. *Mol Psychiatry*. 2016;21:1202–7.
- Williams NM, Franke B, Mick E, Anney RJ, Freitag CM, Gill M, et al. Genome-wide analysis of copy number variants in attention deficit hyperactivity disorder: the role of rare variants and duplications at 15q13.3. *Am J Psychiatry*. 2012;169:195–204.
- Williams NM, Zaharieva I, Martin A, Langley K, Mantripragada K, Fossdal R, et al. Rare chromosomal deletions and duplications in attention-deficit hyperactivity disorder: a genome-wide analysis. *Lancet*. 2010;376:1401–8.
- Zayats T, Jacobsen KK, Kleppe R, Jacob CP, Kittel-Schneider S, Ribases M, et al. Exome chip analyses in adult attention deficit hyperactivity disorder. *Transl Psychiatry*. 2016;6:e923.
- Demontis D, Lescai F, Borglum A, Glerup S, Ostergaard SD, Mors O, et al. Whole-exome sequencing reveals increased burden of rare functional and disruptive variants in candidate risk genes in individuals with persistent attention-deficit/hyperactivity disorder. *J Am Acad Child Adolesc Psychiatry*. 2016;55:521–3.
- Kiser DP, Rivero O, Lesch KP. Annual research review: the (epi) genetics of neurodevelopmental disorders in the era of whole-genome sequencing—unveiling the dark matter. *J Child Psychol Psychiatry*. 2015;56:278–95.
- Iossifov I, O'Roak BJ, Sanders SJ, Ronemus M, Krumm N, Levy D, et al. The contribution of de novo coding mutations to autism spectrum disorder. *Nature*. 2014;515:216–21.
- Purcell SM, Moran JL, Fromer M, Ruderfer D, Solovieff N, Roussos P, et al. A polygenic burden of rare disruptive mutations in schizophrenia. *Nature*. 2014;506:185–90.
- Romanos J, Freitag C, Jacob C, Craig DW, Dempfle A, Nguyen TT, et al. Genome-wide linkage analysis of ADHD using high-density SNP arrays: novel loci at 5q13.1 and 14q12. *Mol Psychiatry*. 2008;13:522–30.

28. Galesloot TE, Vermeulen SH, Swinkels DW, de Vegt F, Franke B, den Heijer M, et al. Cohort profile: the Nijmegen Biomedical Study (NBS). *Int J Epidemiol*. 2017;46:1099–1100j.
29. Krokstad S, Langhammer A, Hveem K, Holmen TL, Midthjell K, Stene TR, et al. Cohort profile: the HUNT Study, Norway. *Int J Epidemiol*. 2013;42:968–77.
30. Schmermund A, Mohlenkamp S, Stang A, Gronemeyer D, Seibel R, Hirche H, et al. Assessment of clinically silent atherosclerotic disease and established and novel risk factors for predicting myocardial infarction and cardiac death in healthy middle-aged subjects: rationale and design of the Heinz Nixdorf RECALL Study. Risk factors, evaluation of coronary calcium and lifestyle. *Am Heart J*. 2002;144:212–8.
31. Franke B, Reif A. IMPACTing on adult ADHD research. *Eur Neuropsychopharmacol*. 2013;23:413–5.
32. Purcell S, Neale B, Todd-Brown K, Thomas L, Ferreira MA, Bender D, et al. PLINK: a tool set for whole-genome association and population-based linkage analyses. *Am J Hum Genet*. 2007;81:559–75.
33. Silberstein M, Weissbrod O, Otten L, Tzemach A, Anisenia A, Shtark O, et al. A system for exact and approximate genetic linkage analysis of SNP data in large pedigrees. *Bioinformatics*. 2013;29:197–205.
34. de Ligt J, Willemsen MH, van Bon BW, Kleefstra T, Yntema HG, Kroes T, et al. Diagnostic exome sequencing in persons with severe intellectual disability. *N Engl J Med*. 2012;367:1921–9.
35. Sim NL, Kumar P, Hu J, Henikoff S, Schneider G, Ng PC. SIFT web server: predicting effects of amino acid substitutions on proteins. *Nucleic Acids Res*. 2012;40:W452–457.
36. Adzhubei IA, Schmidt S, Peshkin L, Ramensky VE, Gerasimova A, Bork P, et al. A method and server for predicting damaging missense mutations. *Nat Methods*. 2010;7:248–9.
37. Schwarz JM, Cooper DN, Schuelke M, Seelow D. MutationTaster2: mutation prediction for the deep-sequencing age. *Nat Methods*. 2014;11:361–2.
38. Pollard KS, Hubisz MJ, Rosenbloom KR, Siepel A. Detection of nonneutral substitution rates on mammalian phylogenies. *Genome Res*. 2010;20:110–21.
39. Grantham R. Amino acid difference formula to help explain protein evolution. *Science*. 1974;185:862–4.
40. de Leeuw CA, Mooij JM, Heskes T, Posthuma D. MAGMA: generalized gene-set analysis of GWAS data. *PLoS Comput Biol*. 2015;11:e1004219.
41. Genomes Project C, Abecasis GR, Altshuler D, Auton A, Brooks LD, Durbin RM, et al. A map of human genome variation from population-scale sequencing. *Nature*. 2010;467:1061–73.
42. Watanabe, K., Taskesen, E., van Bochoven, A. & Posthuma, D. Functional mapping and annotation of genetic associations with FUMA. *Nat Commun* 2017;8:1826.
43. Neale BM, Kou Y, Liu L, Ma'ayan A, Samocha KE, Sabo A, et al. Patterns and rates of exonic de novo mutations in autism spectrum disorders. *Nature*. 2012;485:242–5.
44. O'Roak BJ, Vives L, Girirajan S, Karakoc E, Krumm N, Coe BP, et al. Sporadic autism exomes reveal a highly interconnected protein network of de novo mutations. *Nature*. 2012;485:246–50.
45. Sanders SJ, Murtha MT, Gupta AR, Murdoch JD, Raubeson MJ, Willsey AJ, et al. De novo mutations revealed by whole-exome sequencing are strongly associated with autism. *Nature*. 2012;485:237–41.
46. Hashimoto R, Nakazawa T, Tsurusaki Y, Yasuda Y, Nagayasu K, Matsumura K, et al. Whole-exome sequencing and neurite outgrowth analysis in autism spectrum disorder. *J Hum Genet*. 2016;61:199–206.
47. Ploeger A, Galis F. Evolutionary approaches to autism- an overview and integration. *Mcgill J Med*. 2011;13:38.
48. Chen Q, Brikell I, Lichtenstein P, Serlachius E, Kuja-Halkola R, Sandin S, et al. Familial aggregation of attention-deficit/hyperactivity disorder. *J Child Psychol Psychiatry*. 2016;58:231–9.
49. D'Onofrio BM, Rickert ME, Frans E, Kuja-Halkola R, Almqvist C, Sjolander A, et al. Paternal age at childbearing and offspring psychiatric and academic morbidity. *JAMA Psychiatry*. 2014;71:432–8.
50. Kong A, Frigge ML, Masson G, Besenbacher S, Sulem P, Magnusson G, et al. Rate of de novo mutations and the importance of father's age to disease risk. *Nature*. 2012;488:471–5.
51. Oerlemans AM, Hartman CA, de Bruijn YG, Franke B, Buitelaar JK, Rommelse NN. Cognitive impairments are different in single-incidence and multi-incidence ADHD families. *J Child Psychol Psychiatry*. 2015;56:782–91.
52. Oerlemans AM, Hartman CA, De Bruijn YG, Van Steijn DJ, Franke B, Buitelaar JK, et al. Simplex and multiplex stratification in ASD and ADHD families: a promising approach for identifying overlapping and unique underpinnings of ASD and ADHD? *J Autism Dev Disord*. 2015;45:645–57.
53. Chapman NH, Nato AQ Jr., Bernier R, Ankenman K, Sohi H, Munson J, et al. Whole exome sequencing in extended families with autism spectrum disorder implicates four candidate genes. *Hum Genet*. 2015;134:1055–68.
54. Boomsma DI, Saviouk V, Hottenga J-J, Distel MA, de Moor MHM, Vink JM, et al. Genetic epidemiology of attention deficit hyperactivity disorder (ADHD Index) in adults. *PLoS ONE*. 2010;5:e10621.
55. Huttlin EL, Ting L, Bruckner RJ, Gebreab F, Gygi MP, Szpyt J, et al. The BioPlex network: a systematic exploration of the human interactome. *Cell*. 2015;162:425–40.
56. Torres GE. The dopamine transporter proteome. *J Neurochem*. 2006;97(Suppl 1):3–10.
57. Zheng M, Zhang X, Min C, Choi BG, Oh JJ, Kim KM. Functional regulation of dopamine D(3) receptor through interaction with PICK1. *Biomol Ther*. 2016;24:475–81.
58. Perroy J, El Far O, Bertaso F, Pin JP, Betz H, Bockaert J, et al. PICK1 is required for the control of synaptic transmission by the metabotropic glutamate receptor 7. *EMBO J*. 2002;21:2990–9.
59. Naaijen J, Bralten J, Poelmans G, Glennon JC, Franke B, Buitelaar JK. Glutamatergic and GABAergic gene sets in attention-deficit/hyperactivity disorder: association to overlapping traits in ADHD and autism. *Transl Psychiatry*. 2017;7:e999.
60. Nomura J, Jaaro-Peled H, Lewis E, Nunez-Abades P, Huppe-Gourgues F, Cash-Padgett T, et al. Role for neonatal D-serine signaling: prevention of physiological and behavioral deficits in adult Pick1 knockout mice. *Mol Psychiatry*. 2016;21:386–93.
61. Hawi Z, Cummins TD, Tong J, Arcos-Burgos M, Zhao Q, Matthews N, et al. Rare DNA variants in the brain-derived neurotrophic factor gene increase risk for attention-deficit hyperactivity disorder: a next-generation sequencing study. *Mol Psychiatry*. 2016;22:580–4.
62. Roussos P, Mitchell AC, Voloudakis G, Fullard JF, Pothula VM, Tsang J, et al. A role for non-coding variation in schizophrenia. *Cell Rep*. 2014;9:1417–29.
63. Elia J, Gai X, Xie HM, Perin JC, Geiger E, Glessner JT, et al. Rare structural variants found in attention-deficit hyperactivity disorder are preferentially associated with neurodevelopmental genes. *Mol Psychiatry*. 2010;15:637–46.
64. Stergiakouli E, Hamshere M, Holmans P, Langley K, Zaharieva I, de CG, et al. Investigating the contribution of common genetic variants to the risk and pathogenesis of ADHD. *Am J Psychiatry*. 2012;169:186–94.

Affiliations

Jordi Corominas¹ · Marieke Klein ¹ · Tetyana Zayats² · Olga Rivero ³ · Georg C. Ziegler³ · Marc Pauper¹ · Kornelia Neveling¹ · Geert Poelmans^{1,4} · Charline Jansch³ · Evgeniy Svirin^{3,5} · Julia Geissler⁶ · Heike Weber ^{7,8} · Andreas Reif ⁸ · Alejandro Arias Vasquez^{1,9,10} · Tessel E. Galesloot¹¹ · Lambertus A. L. M. Kiemeneij¹¹ · Jan K. Buitelaar¹⁰ · Josep-Antoni Ramos-Quiroga^{12,13,14,15} · Bru Cormand^{16,17,18,19} · Marta Ribasés ^{12,14,15} · Kristian Hveem^{20,21} · Maiken Elvestad Gabrielsen²⁰ · Per Hoffmann^{22,23,24,25} · Sven Cichon^{24,25,26} · Jan Haavik^{2,27} · Stefan Johansson^{28,29} · Christian P. Jacob⁷ · Marcel Romanos⁶ · Barbara Franke ^{1,10} · Klaus-Peter Lesch^{3,5,30}

- ¹ Department of Human Genetics, Donders Institute for Brain, Cognition and Behaviour, Radboud University Medical Center, Nijmegen, The Netherlands
- ² K.G. Jebsen Centre for Neuropsychiatric Disorders, Department of Biomedicine, University of Bergen, Bergen, Norway
- ³ Division of Molecular Psychiatry, Clinical Research Unit on Disorders of Neurodevelopment and Cognition, Center of Mental Health, University of Würzburg, Würzburg, Germany
- ⁴ Department of Molecular Animal Physiology, Donders Institute for Brain, Cognition and Behaviour, Radboud University Medical Center, Nijmegen, The Netherlands
- ⁵ Laboratory of Psychiatric Neurobiology, Institute of Molecular Medicine, I.M. Sechenov First Moscow State Medical University, Moscow, Russia
- ⁶ Department of Child and Adolescent Psychiatry, Psychosomatics and Psychotherapy, Center of Mental Health, University Hospital of Würzburg, Würzburg, Germany
- ⁷ Department of Psychiatry, Psychosomatics and Psychotherapy, Center of Mental Health, University of Würzburg, Würzburg, Germany
- ⁸ Department of Psychiatry, Psychosomatic Medicine and Psychotherapy, University Hospital Frankfurt, Frankfurt am Main, Germany
- ⁹ Department of Psychiatry, Donders Institute for Brain, Cognition and Behaviour, Radboud University Medical Center, Nijmegen, The Netherlands
- ¹⁰ Department of Cognitive Neuroscience, Donders Institute for Brain, Cognition and Behaviour, Radboud University Medical Center, Nijmegen, The Netherlands
- ¹¹ Department for Health Evidence, Radboud Institute for Health Sciences, Radboud University Medical Center, Nijmegen, The Netherlands
- ¹² Biomedical Network Research Center on Mental Health (CIBERSAM), Institute of Salud Carlos III, Madrid, Spain
- ¹³ Department of Psychiatry and Forensic Medicine, Universitat Autònoma de Barcelona, Barcelona, Catalonia, Spain
- ¹⁴ Department of Psychiatry, University Hospital Vall d'Hebron, Universitat Autònoma de Barcelona, Barcelona, Catalonia, Spain
- ¹⁵ Psychiatric Genetics Unit, Group of Psychiatry, Mental Health and Addiction, Vall d'Hebron Research Institute (VHIR), Universitat Autònoma de Barcelona, Barcelona, Spain
- ¹⁶ Department of Genetics, Microbiology and Statistics, Faculty of Biology, University of Barcelona, Barcelona, Catalonia, Spain
- ¹⁷ Institut de Biomedicina de la Universitat de Barcelona (IBUB), Barcelona, Catalonia, Spain
- ¹⁸ Instituto de Investigación Biomédica en Red de Enfermedades Raras (CIBERER), Institute of Salud Carlos III, Madrid, Spain
- ¹⁹ Institut de Recerca Sant Joan de Déu (IR-SJD), Esplugues de Llobregat, Catalonia, Spain
- ²⁰ K.G. Jebsen Center for Genetic Epidemiology, Department of Public Health, NTNU, Norwegian University of Science and Technology, Trondheim, Norway
- ²¹ HUNT Research Centre, Department of Public Health, Norwegian University of Science and Technology, Levanger, Norway
- ²² Institute of Human Genetics, University of Bonn, Bonn, Germany
- ²³ Department of Genomics, Life&Brain Center, University of Bonn, Bonn, Germany
- ²⁴ Institute of Medical Genetics and Pathology, University Hospital Basel, Basel, Switzerland
- ²⁵ Department of Biomedicine, University of Basel, Basel, Switzerland
- ²⁶ Institute of Neuroscience and Medicine (INM-1), Research Center Jülich, Jülich, Germany
- ²⁷ Division of Psychiatry, Haukeland University Hospital, Bergen, Norway
- ²⁸ Center for Medical Genetics and Molecular Medicine, Haukeland University Hospital, Bergen, Norway
- ²⁹ K.G. Jebsen Centre for Neuropsychiatric Disorders, Department of Clinical Science, University of Bergen, Bergen, Norway
- ³⁰ Department of Neuroscience, School of Mental Health and Neuroscience, Maastricht University, Maastricht, The Netherlands