

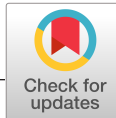
PDF hosted at the Radboud Repository of the Radboud University Nijmegen

The following full text is a publisher's version.

For additional information about this publication click this link.

<http://hdl.handle.net/2066/205513>

Please be advised that this information was generated on 2021-09-26 and may be subject to change.



PET imaging during hypoglycaemia to study adipose tissue metabolism

Marti Boss¹ | Hanne M. M. Rooijackers² | Mijke Buitinga¹ | Marcel J. R. Janssen¹ | Anne I. J. Arens¹ | Lioe-Fee de Geus-Oei¹ | Liesbeth P. Salm¹ | Bastiaan E. de Galan² | Martin Gotthardt¹

¹Department of Radiology and Nuclear Medicine, Nijmegen, the Netherlands

²Department of Internal Medicine, Radboud University Medical Center, Nijmegen, the Netherlands

Correspondence

Marti Boss, Department of Radiology and Nuclear Medicine, Geert Grooteplein-Zuid 10, 6500 HB Nijmegen, the Netherlands.
Email: marti.boss@radboudumc.nl

Abstract

Background: Disturbances in adipose tissue glucose uptake may play a role in the pathogenesis of type 2 diabetes, yet its examination by 2-deoxy-2-[¹⁸F]fluorodeoxyglucose ([¹⁸F]FDG) PET/CT is challenged by relatively low uptake kinetics. We tested the hypothesis that performing [¹⁸F]FDG PET/CT during a hypoglycaemic clamp would improve adipose tissue tracer uptake to allow specific comparison of adipose tissue glucose handling between people with or without type 2 diabetes.

Design: We enrolled participants with or without diabetes who were at least overweight, to undergo a hyperinsulinaemic hypoglycaemic clamp or a hyperinsulinaemic euglycaemic clamp (n = 5 per group). Tracer uptake was quantified using [¹⁸F]FDG PET/CT.

Results: Hypoglycaemic clamping increased [¹⁸F]FDG uptake in visceral adipose tissue of healthy participants ($P = 0.002$). During hypoglycaemia, glucose uptake in visceral adipose tissue of type 2 diabetic participants was lower as compared to healthy participants ($P < 0.0005$). No significant differences were observed in skeletal muscle, liver or pancreas.

Conclusions: The present findings indicate that [¹⁸F]FDG PET/CT during a hypoglycaemic clamp provides a promising new research tool to evaluate adipose tissue glucose metabolism. Using this method, we observed a specific impairment in visceral adipose tissue [¹⁸F]FDG uptake in type 2 diabetes, suggesting a previously underestimated role for adipose tissue glucose handling in type 2 diabetes.

KEYWORDS

[¹⁸F]FDG PET, adipose tissue, glucose metabolism, obesity, type 2 diabetes mellitus

1 | INTRODUCTION

The amount and distribution of adipose tissue (AT) are important contributing factors in the development of insulin

resistance and type 2 diabetes.¹ While hepatic² and muscle³ insulin resistance are generally regarded as the key factors in disrupted glucose homeostasis in type 2 diabetes, AT glucose handling could also play an important role. AT

This is an open access article under the terms of the Creative Commons Attribution-NonCommercial License, which permits use, distribution and reproduction in any medium, provided the original work is properly cited and is not used for commercial purposes.

© 2019 The Authors. *European Journal of Clinical Investigation* published by John Wiley & Sons Ltd on behalf of Stichting European Society for Clinical Investigation Journal Foundation.

has been shown to make a considerable contribution to insulin-stimulated glucose uptake from the circulation.⁴⁻⁶ Furthermore, there is substantial mechanistic evidence for impaired insulin-stimulated glucose uptake in AT in relation to obesity.⁷

Several previous studies have used [¹⁸F]FDG PET during a hyperinsulinaemic euglycaemic clamp to examine glucose uptake in different AT depots in individuals of different metabolic health, but results have not been completely consistent. Both Oliveira et al⁸ and Virtanen et al⁴ have shown an obesity-associated decrease in [¹⁸F]FDG uptake in visceral AT. However, a similar effect in subcutaneous AT was only demonstrated by one study⁴ and not by the other.⁸ In both these studies, [¹⁸F]FDG uptake in AT was not significantly different between metabolically healthy obese participants and obese individuals with type 2 diabetes.^{4,8}

These studies have used different methods of [¹⁸F]FDG PET imaging which could in part explain the different results. However, using ¹⁸F-FDG PET during a hyperinsulinaemic euglycaemic clamp to study tracer uptake in AT is challenging because of the low uptake values of [¹⁸F]FDG in AT as compared to skeletal muscle. Consequently, it is difficult to determine differences in tracer uptake between different AT depots and between individuals. The role of AT in glucose homeostasis could therefore be underestimated. An interesting case was reported in 2011 by Hofman et al in which an [¹⁸F]FDG PET/CT scan was performed in a healthy lean individual during unintentional insulin-induced hypoglycaemia. Surprisingly, an altered biodistribution of the radiopharmaceutical [¹⁸F]FDG was observed, with a markedly increased uptake in AT, most prominently in visceral AT, as compared to the uptake in skeletal muscle.⁹

Performing [¹⁸F]FDG PET during a hyperinsulinaemic hypoglycaemic clamp could thus stimulate tracer uptake in AT and thereby represent a new method to better examine AT glucose handling. We hypothesized that this method could elucidate differences in AT metabolism associated with type 2 diabetes, which would remain undetected in previous studies. In the current study, we therefore performed [¹⁸F]FDG PET/CT during a hyperinsulinaemic hypoglycaemic clamp in overweight or obese people with type 2 diabetes and healthy participants matched for BMI, to compare [¹⁸F]FDG uptake in AT between these groups.

2 | SUBJECTS AND METHODS

2.1 | Enrolment

We enrolled five participants with type 2 diabetes who were at least overweight (BMI > 25 kg/m²) and five BMI-matched individuals without diabetes to undergo a hyperinsulinaemic

hypoglycaemic clamp. In addition, five nondiabetic participants, again matched for BMI, underwent a hyperinsulinaemic euglycaemic clamp. All people with type 2 diabetes met the following inclusion criteria: clinically overt type 2 diabetes for at least 2 years, treated by diet or oral glucose-lowering medication alone (no previous insulin use), free from micro- and macrovascular complications except for background retinopathy and haemoglobin A1c (HbA1c) levels below 75 mmol/mol (9.0%). Healthy obese participants met the following inclusion criteria: fasting glucose < 6.1 mmol/L, HbA1c < 42 mmol/mol (6%) and a normal glucose tolerance test (plasma glucose levels below 6.5 mmol/L 2 hours after a 75 mg glucose challenge). The study was approved by the Radboud University Medical Center institutional review board and has been performed in accordance with the ethical standards as laid down in the 1964 Declaration of Helsinki and its later amendments. All participants provided written consent.

2.2 | Hyperinsulinaemic glucose clamps

All participants presented in the morning at 8.00 AM after an overnight fast (at least 8 hours). Participants with type 2 diabetes omitted their morning oral glucose-lowering medication (if applicable). Upon arrival, two catheters were inserted intravenously. One catheter was placed into the antecubital vein for frequent blood sampling and was positioned in a heated box (55-60°C) to obtain arterialized venous blood. The second catheter was inserted in the antecubital vein of the contralateral arm for infusion of insulin (Insulin Aspart; Novo Nordisk) and glucose 20% w/w (Baxter). Subsequently, infusion of insulin was initiated at a rate of 120 mU per m² per min after a bolus of 1 U (referred to as time point 0). Plasma glucose levels were brought to predetermined levels using a variable infusion of glucose 20%, based on plasma glucose measured at 5-minutes intervals (Biosen C-line; EKF Diagnostics), which was sustained during infusion of [¹⁸F]FDG, the incubation time and the scan. At the start of the clamping procedure, when plasma glucose levels were within the euglycaemic range, and just prior to positioning the patient in the scanner, when plasma glucose levels were within the predetermined range, blood was drawn to determine levels of growth hormone, cortisol, epinephrine and norepinephrine.

2.3 | PET imaging with [¹⁸F]FDG

PET imaging was performed using a Siemens Biograph mCT-40 time-of-flight PET/CT scanner. When stable plasma glucose levels were reached (targeting at 3.0 and 5.0 mmol/L for hypoglycaemia and euglycaemia, respectively), 1.6 MBq/kg [¹⁸F]FDG was infused. PET/CT images were obtained approximately 1 hour after injection from the

base of the skull until the knees at 4 minutes per bed position. A low-dose CT acquisition (40 mAs and 130 kV) of the same area as that covered by the PET scan was used for PET attenuation correction and as an anatomic reference. The size of the CT transaxial matrix was 512×512 (0.98×0.98 mm), and the CT slice width was 3 mm. High definition reconstruction of the images was performed with three iterations, 21 subsets and a post-reconstruction Gaussian filter of 3 mm in full width at half maximum. The transaxial PET matrix size was 256×256 , and pixel size was $3.18 \times 3.18 \times 3$.

2.4 | PET image tissue uptake quantification

PET/CT images were reviewed using Inveon Research Workplace software (version 4.1; Siemens Healthcare). CT images were smoothed with a Gaussian filter of 1 mm. Subsequently, regions of interest (ROIs) were drawn delineating different tissues on the CT image. AT was delineated by thresholding at -110 to -70 HU.⁶ The resulting ROI was then manually divided between visceral AT, abdominal subcutaneous AT and gluteofemoral AT. Skeletal muscle was delineated by manually drawing ROIs around the upper legs, lower back and right shoulder and performing thresholding at -21 to 104 HU within these ROIs to delineate skeletal muscle. ROIs around the liver and pancreas were drawn manually. All ROIs were drawn by a blinded observer. Tracer activity within the ROIs was recorded and expressed as standard uptake value (SUV), defined as activity per mL of tissue divided by the injected dose in MBq/g bodyweight.

2.5 | Statistical analysis

Data analysis was performed using SPSS (version 22; SPSS) with $P < 0.05$ considered statistically significant. Results are expressed as mean \pm SD. Glucose infusion rates during the procedure were compared between the groups using a two-way ANOVA repeated-measures analysis. The effects of type 2 diabetes and hypoglycaemia were tested using one-way ANOVA. Post hoc analyses were performed using the Bonferroni-Dunn test to reveal statistically significant differences between the groups. Levels of hormones before and during the procedure were compared using a Wilcoxon signed rank test.

3 | RESULTS

3.1 | Study participant characteristics

Table 1 shows the baseline characteristics of the participants. Patients with type 2 diabetes were generally well-controlled and older than the two control groups, but well matched for BMI to the healthy obese participants.

3.2 | Plasma glucose levels during the clamps

During the clamping procedure, glucose levels were 5.0 ± 0.3 mmol/L for the euglycaemia group. In the hypoglycaemia groups, glucose levels were 3.0 ± 0.1 for the healthy obese participants and 3.0 ± 0.1 for the patients with type 2 diabetes ($P = \text{NS}$, Figure 1A). Mean glucose infusion rates during the procedure were 7.1 ± 1.9 mg/kg/min for the

TABLE 1 Clinical characteristics of the study participants

	Nondiabetic		Type 2 diabetes
	Euglycaemic clamp (n = 5)	Hypoglycaemic clamp (n = 5)	Hypoglycaemic clamp (n = 5)
Age (y)	30 ± 4	27 ± 6	60 ± 5
Sex (female:male)	2:3	4:1	0:5
Bodyweight (kg)	110 ± 8	89 ± 5	88 ± 4
BMI (kg/m^2)	31.0 ± 1.1	30.0 ± 1.1	29.3 ± 0.4
Duration of diabetes (y)	NA	NA	11 ± 3
Diet			1
Oral medication			
Metformin			3
Sulfonylurea			1
Fasting glucose (mmol/L)	4.86 ± 0.25	5.08 ± 0.12	7.86 ± 0.49
HbA1c (%)/(mmol/mol)	$3.3 \pm 0.1/$	$3.2 \pm 0.1/$	$5.0 \pm 0.2/$
	35.8 ± 0.9	34.8 ± 1.4	55.0 ± 2.1

Data are shown as means \pm SD or as number (%).

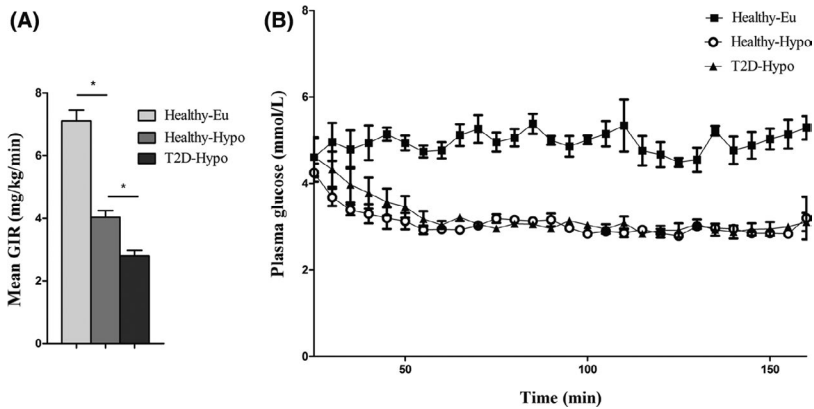


FIGURE 1 A, Time course of plasma glucose levels during the clamps. At time point 0, insulin infusion started. Black squares indicate values of the euglycaemia group. For hypoglycaemia: open circles, healthy participants; black triangles, type 2 diabetic participants. B, Mean glucose infusion rates during the procedure. Data are shown as means \pm SD. * $P < 0.05$ by Bonferroni-Dunn test

euglycaemia group. In the hypoglycaemia groups, glucose infusion rates were 4.0 ± 1.2 mg/kg/min for the healthy obese participants and 2.8 ± 1.0 mg/kg/min for the patients with type 2 diabetes ($P = 0.023$, Figure 1B).

3.3 | Counterregulatory hormones

For each group, levels of cortisol, growth hormone, epinephrine and norepinephrine measured before the clamping procedure were compared to levels measured during the procedure, when stable blood glucose values were reached. Hypoglycaemia significantly stimulated the release of the counterregulatory hormones epinephrine, norepinephrine, cortisol and growth hormone, whereas plasma levels of these hormones did not change in response to euglycaemia (Table 2). There were no major differences in these responses between subjects with type 2 diabetes and those without diabetes.

3.4 | The effect of hypoglycaemia on AT [^{18}F]FDG uptake

The distribution of [^{18}F]FDG was altered under hypoglycaemic conditions compared to euglycaemic conditions in healthy obese individuals, with glucose uptake in visceral AT being significantly higher during hypoglycaemia ($P = 0.004$). Hypoglycaemia also caused a numerical increase in [^{18}F]

FDG uptake in abdominal subcutaneous AT and gluteofemoral subcutaneous AT, but this effect did not reach statistical significance (Figure 2A).

3.5 | Comparison of [^{18}F]FDG uptake in AT between healthy participants and patients with type 2 diabetes

Under hypoglycaemic conditions, patients with type 2 diabetes had a lower [^{18}F]FDG uptake in visceral AT than the participants without diabetes (Figure 2A, $P < 0.0001$). Patients with type 2 diabetes and healthy participants showed no statistically significant difference in [^{18}F]FDG uptake either in abdominal subcutaneous AT or in gluteofemoral subcutaneous AT (Figure 2A). The total AT volume as well as the AT volume in the different depots did not differ significantly between the groups (data not shown, but available upon request).

3.6 | Comparison of [^{18}F]FDG uptake between different AT depots and other organs

Uptake of [^{18}F]FDG was compared between the different AT depots. In all groups, [^{18}F]FDG uptake in visceral AT was significantly higher than in subcutaneous AT. In healthy obese participants, visceral AT [^{18}F]FDG uptake was approximately twice as high as abdominal

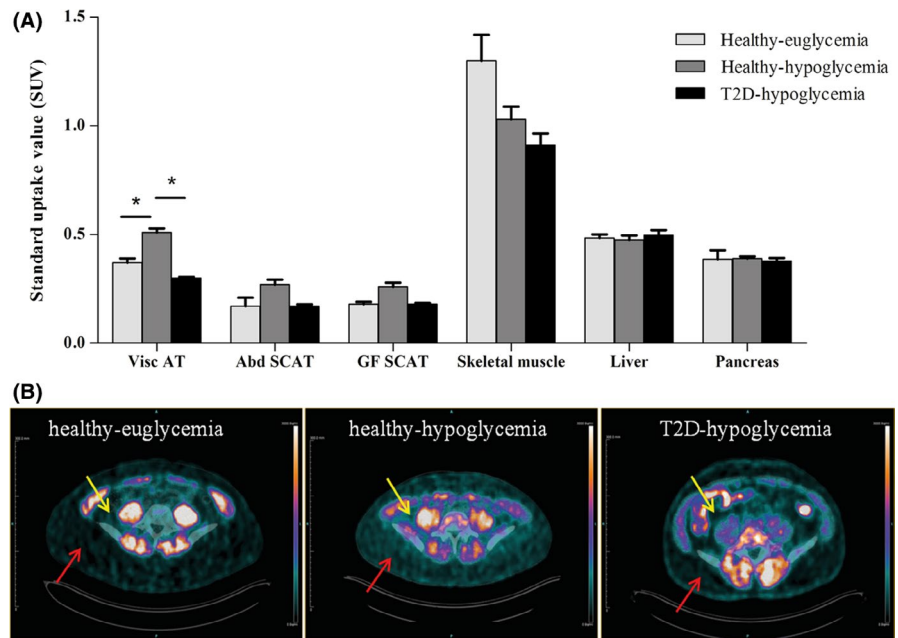
TABLE 2 Counterregulatory hormone levels before and during the clamping procedure

	Healthy-euglycaemia		Healthy-hypoglycaemia		T2D-hypoglycaemia	
	Before	During	Before	During	Before	During
Growth hormone (mE/L)	8.5 ± 4.0	0.4 ± 0.2	19.1 ± 7.7	18.1 ± 7.3	3.1 ± 1.7	$25.7 \pm 9.4^*$
Cortisol ($\mu\text{mol/L}$)	0.38 ± 0.04	0.25 ± 0.03	0.57 ± 0.18	0.53 ± 0.13	0.22 ± 0.02	$0.47 \pm 0.07^*$
Epinephrine (nmol/L)	0.12 ± 0.02	0.11 ± 0.02	0.15 ± 0.04	$1.15 \pm 0.25^*$	0.13 ± 0.03	$1.69 \pm 0.74^*$
Norepinephrine (nmol/L)	1.16 ± 0.10	1.19 ± 0.17	0.94 ± 0.13	$1.24 \pm 0.10^*$	1.28 ± 0.13	$1.90 \pm 0.26^*$

Data are shown as mean \pm SD

* $P < 0.05$ vs before values by Wilcoxon signed rank test.

FIGURE 2 Uptake of ^{18}F -FDG in different AT depots and other organs (A) across the groups. Bars represent means \pm SEM. $*P < 0.05$ by Bonferroni-Dunn test. ^{18}F FDG uptake ratios between AT and skeletal muscle are 1:6.3 and 1:3.2 for subjects under euglycaemic and hypoglycaemic conditions, respectively. Representative PET images of healthy participants under euglycaemia and hypoglycaemia and type 2 diabetes patients under hypoglycaemia (B). Yellow arrows indicate visceral AT, and red arrows indicate abdominal subcutaneous AT



subcutaneous AT and gluteofemoral subcutaneous AT tracer uptake, both during euglycaemia ($P < 0.0001$) and during hypoglycaemia ($P < 0.003$). In patients with type 2 diabetes, ^{18}F FDG in visceral AT was approximately 40% higher than in visceral subcutaneous AT and gluteofemoral subcutaneous AT (Figure 2A, $P < 0.0001$). Quantification of ^{18}F FDG accumulation in skeletal muscle, liver and pancreas did not reveal significant differences between the groups. However, because there was a numerically lower ^{18}F FDG uptake in skeletal muscle during hypoglycaemia, the tracer uptake ratio between AT and skeletal muscle was 1:6.3 versus 1:3.2 in subjects under euglycaemic and hypoglycaemic conditions, respectively ($P = 0.018$, Figure 2A).

4 | DISCUSSION

The main finding of this study is the stimulatory effect of hypoglycaemia on the uptake of ^{18}F FDG by AT. This method thereby enables a more precise and specific analysis of glucose handling by both visceral and subcutaneous AT, which has been challenging so far because of the low uptake values in AT compared to skeletal muscle under nonhypoglycaemic conditions. By using this approach, we also showed that the uptake of glucose in visceral AT of patients with type 2 diabetes is about 40% lower than in BMI-matched healthy participants (Figure 2), which suggests a specific impairment in visceral AT metabolism in patients with type 2 diabetes.

^{18}F FDG PET provides a tissue-specific, noninvasive method for whole-body analysis of glucose handling. Previous studies evaluating AT glucose metabolism using

^{18}F FDG PET were performed either under fasting conditions without a clamping procedure or during a hyperinsulinaemic euglycaemic clamp.^{3-6,8,10} Under these conditions, uptake values of ^{18}F FDG in AT are low, especially compared to uptake levels in skeletal muscle. Performing ^{18}F FDG PET during a hyperinsulinaemic hypoglycaemic clamp significantly increased the tracer uptake in visceral AT of healthy participants and also resulted in a numerical increase in ^{18}F FDG uptake in subcutaneous AT. Since tracer uptake was not raised in skeletal muscle during hypoglycaemia, the uptake ratio between AT and skeletal muscle increased, allowing better discrimination (Figure 2A). We therefore propose that this method may provide a new, attractive research tool that permits the comparison of glucose uptake in different AT depots and examination of glucose handling in patients with differences in metabolic health. This technique could potentially be valuable as a research tool to examine the underlying pathophysiology of patients at risk of developing type 2 diabetes.

While providing interesting methodological opportunities, it is not fully clear what causes the stimulatory effect of hypoglycaemia on visceral ^{18}F FDG uptake. Catecholamines, which increase in response to hypoglycaemia, suppress insulin-stimulated glucose uptake in skeletal muscle by activating protein kinase A through the stimulation of G-protein coupled receptors.¹¹⁻¹³ In contrast, while the counterregulatory response to hypoglycaemia was shown to increase lipolysis rates in AT, insulin signalling seems to remain intact.¹⁴ This could provide a possible explanation for the increased uptake ratio between AT and skeletal muscle observed in this study. Another contributing factor could be activation of the enzyme 5'adenosine monophosphate-activated protein kinase (AMPK) in adipocytes. AMPK is activated by metabolic

stresses that inhibit ATP production, like hypoglycaemia.¹⁵ This can in turn result in an increase of glucose uptake by adipocytes.¹⁶⁻¹⁸

By performing [¹⁸F]FDG PET during a hyperinsulinaemic hypoglycaemic clamp, we found a specific impairment in visceral AT metabolism in patients with type 2 diabetes compared to BMI-matched, healthy participants. In subcutaneous AT depots, skeletal muscle, liver and pancreas, no significant differences in [¹⁸F]FDG uptake were found between healthy and type 2 diabetic participants (Figure 2A). Also, in line with previous literature,^{4-6,8,10} the uptake of glucose was found to be significantly higher in visceral AT than in subcutaneous AT (Figure 2A), which can be explained by greater abundance and metabolic activity of visceral AT adipocytes.^{10,19} Because of the tissue specificity of the observed impairment in [¹⁸F]FDG uptake in this study, combined with the glucose handling capacity of visceral AT, we hypothesize that visceral AT glucose handling could play a role in the pathophysiology of type 2 diabetes. Following this pilot study, future investigations with larger patient numbers are key to further substantiate this hypothesis. Also, in this study, static PET scans were performed one hour after the injection of the radiopharmaceutical to quantify the tissue-specific uptake of [¹⁸F]FDG. Future studies with dynamic PET could give insight into uptake kinetics and provide further information on systemic glucose metabolism and its role in type 2 diabetes.

The mechanism behind the observed impairment in visceral AT remains unclear. A possible explanation is a loss of visceral AT insulin sensitivity in type 2 diabetes, which is supported by clear mechanistic evidence for AT insulin resistance.⁷ However, differences in glucose uptake by AT between healthy and type 2 diabetic subjects have not been found during euglycaemia in previous studies.^{4,8} Metabolic effects of counterregulatory hormones could also play a role. Cortisol and growth hormone, which were increased significantly in participants with type 2 diabetes during hypoglycaemia, while remaining stable in healthy participants (Table 2), are known to repress glucose uptake in AT.^{20,21} However, basal levels of these hormones were also higher in healthy participants. Also, effects of these hormones would not become acutely apparent,^{22,23} making their influence on the observed differences in this study less likely. Norepinephrine is known to increase the metabolic activity of adipose tissue via beta3-adrenergic receptors. Levels of norepinephrine were slightly increased in participants with type 2 diabetes as compared to healthy participants. While this effect is generally described for brown adipose tissue, a deficiency in the beta3-adrenergic pathway could potentially contribute to the observed impairment in [¹⁸F]FDG uptake in VAT of participants with type 2 diabetes in this study.

Limitations of this study that should be considered are the inequality in age and gender between the participants with type 2 diabetes and the healthy participants. However, it has been reported that age alone does not significantly influence insulin sensitivity.²⁴ Furthermore, uptake of [¹⁸F]FDG in AT has been shown to increase with age,²⁵ which would merely mask the decrease in [¹⁸F]FDG uptake in AT of type 2 diabetes patients observed in this study. Also, there is no report on any influence of gender on biodistribution of [¹⁸F]FDG. We therefore do not expect the inequality in age and gender between the groups to affect the validity of these results.

In conclusion, the present data indicate that [¹⁸F]FDG PET/CT performed during a hyperinsulinaemic hypoglycaemic clamp could be a promising new research tool to examine AT metabolism. By using this method, we here show that [¹⁸F]FDG uptake during hypoglycaemia is impaired in type 2 diabetes patients, specifically in visceral AT. This study thereby suggests a role for AT glucose handling in the pathophysiology of type 2 diabetes.

5 | PRIOR PRESENTATION

Parts of this study were presented at.

- The Annual Dutch Diabetes Research Meeting 2016, Oosterbeek, the Netherlands, 1-2 December 2016.
- The Gemeinsame Jahrestagung der Deutschen, Österreichischen und Schweizerischen Gesellschaften für Nuklearmedizin, Dresden, Germany, 26-29 April 2017.
- The Hot Topics in Molecular Imaging meeting of the European Society of Molecular Imaging in Les Houches, 21-26 January 2018.

ACKNOWLEDGEMENTS

The authors thank all the volunteers for their participation in this work. We thank M. van Riel, P. Kok, J. Butter, M Janssen and M.C. Attard for technical support during the PET/CT scans and D. Lobeek and T. Jansen for their help with collection of blood samples.

CONFLICT OF INTEREST

BEdG has received research support from Astra-Zeneca and is on a scientific advisory board for Novo Nordisk.

AUTHOR CONTRIBUTIONS

MB HMR, LS, BEdG and MG designed the study with input from MJ, AA and L-FdG-O. MB recruited the participants. HMR performed the glucose clamps. MB and HMR collected

the data. MB analysed the data. All authors discussed the results and implications and commented on the manuscript at all stages. BEdG and MG are the guarantors of this work and, as such, had full access to all the data in the study and take responsibility for the integrity of the data and the accuracy of the data analysis.

ORCID

Marti Boss  <https://orcid.org/0000-0002-5837-1803>

REFERENCES

- Kodama S, Horikawa C, Fujihara K, et al. Quantitative relationship between body weight gain in adulthood and incident type 2 diabetes: a meta-analysis. *Obes Rev.* 2014;15(3):202-214.
- Ter Horst KW, Gilijamse PW, Ackermans MT, et al. Impaired insulin action in the liver, but not in adipose tissue or muscle, is a distinct metabolic feature of impaired fasting glucose in obese humans. *Metabolism.* 2016;65(5):757-763.
- Dadson P, Landini L, Helmio M, et al. Effect of bariatric surgery on adipose tissue glucose metabolism in different depots in patients with or without type 2 diabetes. *Diabetes Care.* 2016;39(2):292-299.
- Virtanen KA, Iozzo P, Hallsten K, et al. Increased fat mass compensates for insulin resistance in abdominal obesity and type 2 diabetes: a positron-emitting tomography study. *Diabetes.* 2005;54(9):2720-2726.
- Ng JM, Azuma K, Kelley C, et al. PET imaging reveals distinctive roles for different regional adipose tissue depots in systemic glucose metabolism in nonobese humans. *Am J Physiol Endocrinol Metab.* 2012;303(9):E1134-1141.
- Christen T, Sheikine Y, Rocha VZ, et al. Increased glucose uptake in visceral versus subcutaneous adipose tissue revealed by PET imaging. *JACC Cardiovasc Imaging.* 2010;3(8):843-851.
- Weyer C, Funahashi T, Tanaka S, et al. Hypoadiponectinemia in obesity and type 2 diabetes: close association with insulin resistance and hyperinsulinemia. *J Clin Endocrinol Metabol.* 2001;86(5):1930-1935.
- Oliveira AL, Azevedo DC, Bredella MA, Stanley TL, Torriani M. Visceral and subcutaneous adipose tissue FDG uptake by PET/CT in metabolically healthy obese subjects. *Obesity (Silver Spring, Md).* 2015;23(2):286-289.
- Hofman MS, Hicks RJ. White fat, factitious hyperglycemia, and the role of FDG PET to enhance understanding of adipocyte metabolism. *EJNMMI Res.* 2011;1(1):2.
- Virtanen KA, Lonnroth P, Parkkola R, et al. Glucose uptake and perfusion in subcutaneous and visceral adipose tissue during insulin stimulation in nonobese and obese humans. *J Clin Endocrinol Metabol.* 2002;87(8):3902-3910.
- Lynch GS, Ryall JG. Role of beta-adrenoceptor signaling in skeletal muscle: implications for muscle wasting and disease. *Physiol Rev.* 2008;88(2):729-767.
- Walker KS, Watt PW, Cohen P. Phosphorylation of the skeletal muscle glycogen-targeting subunit of protein phosphatase 1 in response to adrenaline in vivo. *FEBS Lett.* 2000;466(1):121-124.
- Voss TS, Vendelbo MH, Kampmann U, et al. Acute hypoglycemia in healthy humans impairs insulin stimulated glucose uptake and glycogen synthase in skeletal muscle; a randomized clinical study. *Diabetes.* 2017; 66(9):2483-2494.
- Voss TS, Vendelbo MH, Kampmann U, et al. Effects of insulin-induced hypoglycaemia on lipolysis rate, lipid oxidation and adipose tissue signalling in human volunteers: a randomised clinical study. *Diabetologia.* 2017;60(1):143-152.
- Salt IP, Johnson G, Ashcroft SJ, Hardie DG. AMP-activated protein kinase is activated by low glucose in cell lines derived from pancreatic beta cells, and may regulate insulin release. *Biochem J.* 1998;335(Pt 3):533-539.
- Holmes BF, Kurth-Kraczek EJ, Winder WW. Chronic activation of 5'-AMP-activated protein kinase increases GLUT-4, hexokinase, and glycogen in muscle. *J Appl Physiol.* 1999;87(5):1990-1995.
- Kurth-Kraczek EJ, Hirshman MF, Goodyear LJ, Winder WW. 5' AMP-activated protein kinase activation causes GLUT4 translocation in skeletal muscle. *Diabetes.* 1999;48(8):1667-1671.
- Merrill GF, Kurth EJ, Hardie DG, Winder WW. AICA riboside increases AMP-activated protein kinase, fatty acid oxidation, and glucose uptake in rat muscle. *Am J Physiol.* 1997;273(6 Pt 1):E1107-1112.
- Ibrahim MM. Subcutaneous and visceral adipose tissue: structural and functional differences. *Obes Rev.* 2010;11(1):11-18.
- Andrews RC, Walker BR. Glucocorticoids and insulin resistance: old hormones, new targets. *Clin Sci.* 1999;96(5):513-523.
- Vijayakumar A, Novosyadlyy R, Wu Y, Yakar S, LeRoith D. Biological effects of growth hormone on carbohydrate and lipid metabolism. *Growth Horm IGF Res.* 2010;20(1):1-7.
- Djurhuus CB, Gravholt CH, Nielsen S, et al. Effects of cortisol on lipolysis and regional interstitial glycerol levels in humans. *Am J Physiol Endocrinol Metab.* 2002;283(1):E172-177.
- Djurhuus CB, Gravholt CH, Nielsen S, Pedersen SB, Moller N, Schmitz O. Additive effects of cortisol and growth hormone on regional and systemic lipolysis in humans. *Am J Physiol Endocrinol Metab.* 2004;286(3):E488-494.
- Ferrannini E, Vichi S, Beck-Nielsen H, Laakso M, Paolisso G, Smith U. Insulin action and age. European Group for the Study of Insulin Resistance (EGIR). *Diabetes.* 1996;45(7):947-953.
- Wehrli NE, Bural G, Houseni M, Alkhalaf K, Alavi A, Torigian DA. Determination of age-related changes in structure and function of skin, adipose tissue, and skeletal muscle with computed tomography, magnetic resonance imaging, and positron emission tomography. *Semin Nucl Med.* 2007;37(3):195-205.

How to cite this article: Boss M, Rooijackers HMM, Buitinga M, et al. PET imaging during hypoglycaemia to study adipose tissue metabolism. *Eur J Clin Invest.* 2019;49:e13120. <https://doi.org/10.1111/eci.13120>