

PDF hosted at the Radboud Repository of the Radboud University Nijmegen

The following full text is a publisher's version.

For additional information about this publication click this link.

<http://hdl.handle.net/2066/110866>

Please be advised that this information was generated on 2019-04-25 and may be subject to change.

RESEARCH ARTICLE

Open Access

Development of a set of process and structure indicators for palliative care: the Europall project

Kathrin Woitha^{1*}, Karen Van Beek², Nisar Ahmed³, Jeroen Hasselaar¹, Jean-Marc Mollard⁵, Isabelle Colombet^{6,7}, Lukas Radbruch⁴, Kris Vissers¹ and Yvonne Engels¹

Abstract

Background: By measuring the quality of the organisation of palliative care with process and structure quality indicators (QIs), patients, caregivers and policy makers are able to monitor to what extent recommendations are met, like those of the council of the WHO on palliative care and guidelines. This will support the implementation of public programmes, and will enable comparisons between organisations or countries.

Methods: As no European set of indicators for the organisation of palliative care existed, such a set of QIs was developed. An update of a previous systematic review was made and extended with more databases and grey literature. In two project meetings with practitioners and experts in palliative care the development process of a QI set was finalised and the QIs were categorized in a framework, covering the recommendations of the Council of Europe.

Results: The searches resulted in 151 structure and process indicators, which were discussed in steering group meetings. Of those QIs, 110 were eligible for the final framework.

Conclusions: We developed the first set of QIs for the organisation of palliative care. This article is the first step in a multi step project to identify, validate and pilot QIs.

Keywords: Quality indicator, Organisation, Europe, Public health, Palliative care, Europall

Background

Following the 2002 definition of the World Health Organisation (WHO), palliative care is no longer restricted to patients with cancer; it should be available for all patients with life-threatening diseases [1]. Furthermore, palliative care is applicable early in the course of the disease and can be delivered in conjunction with interventions that aim to prolong life. Palliative care needs a team approach in order to relieve not only pain and other somatic symptoms but also to provide multi-dimensional care including psychosocial and spiritual care and support for patients and their proxies. This wider definition implies an increase of the number of patients eligible for palliative care. Due to successful medical interventions, the aging population and improved survival of patients with chronic diseases or

with cancer, the demand for palliative care will increase too [2,3].

In 2003, the Council of Europe launched recommendations for the organisation of palliative care regarding settings and services, policy and organisation, quality improvement and research, education and training, family, communication with the patient and family, teams and bereavement. This included further cooperation between European countries [4]. As most scientific studies focus on clinical outcomes, it is unclear whether these recommendations and the WHO definition have been implemented in the organisation of palliative care in Europe. By measuring the quality of the organisation of palliative care, patients, caregivers and policy makers can monitor whether in their country, specific settings and networks for palliative care meet the recommendations of the council of Europe and of the WHO. This information would give better insight, which is needed for the measurement of the impact of palliative care programs [5].

* Correspondence: k.woitha@anes.umcn.nl

¹Department of Anaesthesiology, Pain and Palliative Medicine, Radboud University Nijmegen Medical Centre, Geert Grote Plein 10, Nijmegen 6500 HB, The Netherlands

Full list of author information is available at the end of the article

A valid and reliable method for assessing the quality of the organisation of care is the use of structure and process quality indicators (QIs). QIs are 'explicitly defined and measurable items referring to the outcomes, processes or structure of care' [6,7]. In a systematic review published in 2009, clinical indicators appeared to be widely overrepresented over indicators that assess organisational issues of palliative care, and most QIs were developed in and for one specific country or setting [8].

Therefore, we aimed to develop a scientifically sound European set of structure and process QIs, as a first step in quality measurement and improvement.

Methods

The study, undertaken by partners from seven collaborating countries (Belgium, United Kingdom, France, Germany, Netherlands, Poland and Spain), ran from October 2007 till September 2010 [9]. It was co-funded by the European Executive Agency for Health and Consumers (EAHC).

QI sets can be based on existing sets of QIs, recommendations from clinical guidelines, scientific literature, best practice or expert consensus [6]. We used a combination of these.

As palliative care, being a relatively young field within health care is changing rapidly. The initial phase of this project was an update and extension of a previous review aiming to find already existing QIs in literature or aspects of the organisation of the palliative care for which QIs would be useful [8]. QIs were operationalized as 'measurable items referring to the outcomes, processes or structure of care' [6,7]. Organisation of palliative care was defined as 'systems to enable the delivery of good quality in palliative care,' which made us focus on processes and structures [7]. Besides publications that describe the development or use of QIs for the organisation of palliative care, publications were used that describe the structure or process of good palliative care, in order to develop QIs if not available yet.

Main database search

As an update and extension of an existing systematic review, the following bibliographic databases were searched: Medline, Scopus, PsycINFO, Social Medicine, CINAHL, the Cochrane Database, Embase, SIGLE, ASCO, and Google Scholar by an existing search strategy (Additional file 1: Appendix A) [8]. If applicable, Mesh terms were changed, as these are database-specific.

Inclusion criteria were a publication period from December 2007 to May 2009, as the systematic review ran until December 2007 and containing information about the development or use of (sets of) QIs.

Papers describing QIs about palliative care for children, clinical outcome indicators, patient outcome and

on treatment were excluded, as well as scientific papers that were not written in English.

The initial selection process was based on independent screening by three researchers of title and/or abstract, followed by a selection based on full text. Additionally, reference lists of obtained papers were studied and hand searches were performed (Current Opinion in Supportive and Palliative Care, Journal of Pain and Symptom Management, Palliative Medicine and Quality and Safety in Health Care Journal).

The QIs derived from the search were categorized in a framework. It was based on (1) a previously developed framework for evaluation of the organisation of general practice and adapted for palliative care and (2) the recommendations of the Council of Europe [4,10]. It contains the domains 1. Definition of a palliative care service, 2. Access to palliative care, 3. Infrastructure, 4. Assessment tools, 5. Personnel, 6. Documentation of clinical data, 7. Quality and safety issues, 8. Reporting clinical activity of palliative care, 9. Research and 10. Education.

Grey literature search

If a domain or subdomain of the framework was not covered with QIs found in the literature search, an additional grey literature search was performed. Grey literature was defined as 'literature which has not been formally published in peer-reviewed literature' [11]. Inclusion of grey literature was restricted to reports from government agencies or scientific research groups, white papers and websites from national organisations of the seven participating countries. Finally, the network of the Europall research group was used to identify relevant papers.

Methods of screening and article selection

The steering group of the Europall project planned two meetings in September and October 2009 with all project members (Additional file 1: Appendix B).

QI selection

The draft set of structure and process QIs was discussed during the first steering group meeting in September 2009. Academic experts from several disciplines in palliative care, all from one of the seven participating European countries were invited. Consensus was based on 1. whether it considered a process or structure QI 2. whether it overlapped with other proposed QIs, 3. to which domain of the framework (Table 1) it belonged [10] and 4. for which settings it was applicable. Based on the grey literature search, the project partners could suggest new QIs about aspects that were relevant but not yet operationalised as QIs.

Table 1 Quality indicator set

Definition of a palliative care service				
1	All the services below are part of a comprehensive palliative care service: Palliative day care, Palliative home care support team, Hospice beds, Palliative hospital support team, Inpatient palliative care hospital beds, Palliative care outpatient clinic, Bereavement support	Structure indicator	All settings	New developed
2	All the services below are part of a comprehensive palliative care service: Palliative day care	Structure indicator	All settings	New developed
3	All the services below are part of a comprehensive palliative care service: Palliative home care support team	Structure indicator	All settings	New developed
4	All the services below are part of a comprehensive palliative care service: Hospice beds	Structure indicator	All settings	New developed
5	All the services below are part of a comprehensive palliative care service: Palliative hospital support team	Structure indicator	All settings	New developed
6	All the services below are part of a comprehensive palliative care service: Inpatient palliative care hospital beds (e.g. palliative care unit)	Structure indicator	All settings	New developed
7	All the services below are part of a comprehensive palliative care service: Palliative care outpatient clinic	Structure indicator	All settings	New developed
8	All the services below are part of a comprehensive palliative care service: Bereavement support	Structure indicator	All settings	New developed
Access to palliative care				
A. Access and availability (All settings)				
9	A palliative care team is available at the request of the treating professional/team in all of the following settings: Day care, at home, Hospital, Hospice, Nursing home, Outpatient clinic, Day care	Process indicator	All settings	New developed
10	A palliative care team is available at the request of the treating professional/team in all of the following settings: Day care (excluding palliative day care)	Process indicator	All settings	New developed
11	A palliative care team is available at the request of the treating professional/team in all of the following settings: At home (or home replacing institution s.a mental institution, prison)	Process indicator	All settings	New developed
12	A palliative care team is available at the request of the treating professional/team in all of the following settings: Hospital	Process indicator	All settings	New developed
13	A palliative care team is available at the request of the treating professional/team in all of the following settings: Hospice	Process indicator	All settings	New developed
14	A palliative care team is available at the request of the treating professional/team in all of the following settings: Care home	Process indicator	All settings	New developed
15	A palliative care team is available at the request of the treating professional/team in all of the following settings: Outpatient clinic (excluding palliative care outpatient clinic)	Process indicator	All settings	New developed
16	For every professional/team specialised palliative care advice is available 24 hours a day, 7 days a week	Process indicator	All settings	Changed
17	Patients in need of palliative care and their families have access to palliative care facilities: Throughout the entire duration of their disease	Process indicator	All settings	Changed
18	Patients in need of palliative care and their families have access to palliative care facilities: With no extra financial consequences for the patient	Process indicator	All settings	Changed
19	Patients receiving palliative care have access to diagnostic investigations (e.g. X-rays, blood samples) regardless of their setting	Process indicator	All settings	Changed
Primary care (Home, Nursing home)				
20	Palliative care is available for the patient and their family by:Phone	Process indicator	Primary care indicator	Changed
21	Palliative care is available for the patient and their family by: Visiting the patient	Process indicator	Primary care indicator	Changed
22	Palliative care is available for the patient and their family by: Bringing the patient to the service	Process indicator	Primary care indicator	Changed
23	For a palliative patient in a crisis, the following can be arranged within 24 hours: Admission	Process indicator	Primary care indicator	Changed
24	For a palliative patient in a crisis, the following can be arranged within 24 hours: An urgent discharge to patients home	Process indicator	Primary care indicator	Changed

Table 1 Quality indicator set (Continued)

25	For a palliative patient in a crisis, the following can be arranged within 24 hours: Transfer to another setting of care	Process indicator	Primary care indicator	Changed
B. Out of hours (All settings)				
Staff				
26	A member of a palliative care team is available 24 hours a day, 7 days a week: For palliative care consultation by phone	Process indicator	All settings	Changed
27	A member of a palliative care team is available 24 hours a day, 7 days a week: To provide bedside care in a crisis	Process indicator	All settings	Changed
Drugs				
28	The following treatments are available for a palliative patient 24 hours a day, 7 days a week: Opioids and other controlled drugs	Structure indicator	Primary care indicator	Combined/ Changed
29	The following treatments are available for a palliative patient 24 hours a day, 7 days a week: Anticipatory medication for the dying patient	Structure indicator	Primary care indicator	Combined/ Changed
30	The following treatments are available for a palliative patient 24 hours a day, 7 days a week: Syringe drivers	Structure indicator	Primary care indicator	Combined/ Changed
C. Continuity of care (All settings)				
31	There is a procedure for exchange of clinical information across caregivers, disciplines and settings	Process indicator	All settings	Changed
32	Before discharge/transfer/admission there is information transfer to the caregivers in the next setting regarding care and treatment	Process indicator	All settings	Changed
33	There is a professional caregiver per individual palliative patient nominated as responsible 'key worker' who coordinates care	Process indicator	All settings	Combined/ Changed
34	The responsible 'key worker' pays special attention to continuity of care within and across settings	Process indicator	All settings	Combined/ Changed
Inpatient setting (Hospital, Palliative care unit, Hospice)				
35	General practitioners (GPs) are routinely called when a patient is being discharged home or transferred to another setting	Process indicator	Inpatient setting indicator	Changed
36	The discharge/transfer letter of palliative care patients contains a multidimensional diagnosis, prognosis and treatment plan (see indicator 48 Clinical record)	Structure indicator	Inpatient setting indicator	Changed
Primary care				
37	The primary care out-of-hours service has handover forms (written or -electronic) with clinical information of all palliative care patients in the terminal phase at home	Structure indicator	Primary care indicator	Changed
Infrastructure				
A. All settings				
Infrastructure				
38	Specialist equipment (e.g. anti decubitus mattresses, aspiration material, stoma care, oxygen delivery, special drug administration pumps, hospital beds, etc.) is available for the nursing care of palliative care patients in each specific setting	Structure indicator	All settings	Changed
39	There is a dedicated room where multidisciplinary team meetings within one setting takes place	Structure indicator	All settings	New developed
40	There are dedicated facilities for multidisciplinary communications across settings: A dedicated room for meetings	Structure indicator	All settings	Changed
41	There are dedicated facilities for multidisciplinary communications across settings: Facilities for video or telephone conferences	Structure indicator	All settings	Changed
Information about care				
42	There is an up to date directory of local caregivers and organisations that can have a role in palliative care	Structure indicator	All settings	New developed
43	There are dedicated information about the palliative care service: A website	Structure indicator	All settings	Changed
44	There are dedicated information about the palliative care service: Leaflets or brochures	Structure indicator	All settings	Changed
45	Patient information should be available in relevant foreign languages	Structure indicator	All settings	Changed

Table 1 Quality indicator set (Continued)

46	Appropriately trained translators should be available if professional caregivers and patient or family members do not speak the same language	Process indicator	All settings	Changed
47	There is a computerised medical record, to which all professional caregivers involved in the care of palliative care patients have access: Within one setting	Process indicator	All settings	Combined
IT systems				
48	There is a computerised medical record, to which all professional caregivers involved in the care of palliative care patients have access: Across different settings	Process indicator	All settings	Combined
B. Inpatient setting (Hospital, Palliative care unit, Hospice, Nursing home)				
49	Consultations with the patient and/or family/informal caregivers are done in an environment where privacy is guaranteed (e.g. there is a dedicated room)	Structure indicator	Inpatient setting indicator	Changed
50	Dying patients are able to have a single bedroom if they want to	Process indicator	Inpatient setting indicator	New developed
51	There are facilities for a relative to stay overnight	Structure indicator	Inpatient setting indicator	New developed
52	Family members and friends are able to visit the dying patient without restrictions of visiting hours	Process indicator	Inpatient setting indicator	Changed
53	There is a private place (e.g. dedicated room) for saying goodbye to the deceased	Structure indicator	Inpatient setting indicator	New developed
C. Home care				
54	For a palliative care patient staying at home there is the possibility, if needed, to provide someone (a volunteer or professional) to stay overnight if needed	Process indicator	Home care indicator	Changed
Assessment tools				
55	There is a holistic assessment of palliative care needs of patients and their family caregivers (e.g. SPARC)	Process indicator	All settings	Changed
56	There is an assessment of pain and other symptoms using a validated instrument	Process indicator	All settings	Changed
Personnel palliative care services				
A. Staff				
57	The multidisciplinary team that provides palliative care consists of at least one of the following disciplines: Physician	Structure indicator	All settings	Changed
58	The multidisciplinary team that provides palliative care consists of at least one of the following disciplines: Nurse	Structure indicator	All settings	Changed
59	The multidisciplinary team that provides palliative care consists of at least one of the following disciplines: Spiritual/religious caregiver	Structure indicator	All settings	Changed
60	The multidisciplinary team that provides palliative care consists of at least one of the following disciplines: Psychologist/Psychiatrist	Structure indicator	All settings	Changed
61	The multidisciplinary team that provides palliative care consists of at least one of the following disciplines: Social worker	Structure indicator	All settings	Changed
62	The multidisciplinary team that provides palliative care consists of at least one of the following disciplines: Physiotherapist	Structure indicator	All settings	Changed
63	The multidisciplinary team that provides palliative care consists of at least one of the following disciplines: Occupational therapist	Structure indicator	All settings	Changed
64	The multidisciplinary team that provides palliative care consists of at least one of the following disciplines: Dietitian	Structure indicator	All settings	Changed
65	The multidisciplinary team that provides palliative care consists of at least one of the following disciplines: Bereavement counselor	Structure indicator	All settings	Changed
66	The multidisciplinary team that provides palliative care consists of at least one of the following disciplines: Pharmacist	Structure indicator	All settings	Changed
B. Education and training for staff/volunteers				
67	New staff receives a standardised induction training	Process indicator	All settings	Changed
68	All team members have certified (accredited?) training in palliative care, appropriate to their discipline	Process indicator	All settings	Changed

Table 1 Quality indicator set (Continued)

69	All volunteers have training in palliative care.	Process indicator	All settings	Combined/Changed
C. Support systems				
70	All team members have an annual appraisal	Process indicator	All settings	Changed
71	All team members who professionally deal with loss have access to a program for care for the carers	Process indicator	All settings	Changed
72	Satisfaction with working in the team is assessed (e.g. Team Climate Inventory)	Process indicator	All settings	Changed
D. Organisation of care				
73	Palliative care services work in conjunction with the referring professional/team	Process indicator	Inpatient setting indicator	New developed
74	There is a regular interdisciplinary/multi-professional meeting to discuss palliative care patients: daily meetings to discuss day-to-day management of palliative care patients	Process indicator	All settings	Combined/Changed
75	There is a regular interdisciplinary/multi-professional meeting to discuss palliative care patients: weekly (inter- and multidisciplinary) meeting to review palliative care patients referrals and care plans	Process indicator	All settings	Combined/Changed
E. Information sharing				
76	All relevant team members are informed about patients who have died	Process indicator	Inpatient setting indicator	Changed
Documentation of clinical data				
A. Clinical record (All settings)				
77	For patients receiving palliative care a structured palliative care clinical record is used	Process indicator	All settings	Changed
78	The palliative care clinical record contains evidence of documentation of the following items: Clinical summary	Process indicator	All settings	Changed
79	The palliative care clinical record contains evidence of documentation of the following items: Physical aspects of care	Process indicator	All settings	Changed
80	The palliative care clinical record contains evidence of documentation of the following items: Psychological and psychiatric aspects of care	Process indicator	All settings	Changed
81	The palliative care clinical record contains evidence of documentation of the following items: Social aspects of care	Process indicator	All settings	Changed
82	The palliative care clinical record contains evidence of documentation of the following items: Spiritual, religious, existential aspects of care	Process indicator	All settings	Changed
83	The palliative care clinical record contains evidence of documentation of the following items: Cultural aspects of care	Process indicator	All settings	Changed
84	The palliative care clinical record contains evidence of documentation of the following items: Care of imminently dying patient	Process indicator	All settings	Changed
85	The palliative care clinical record contains evidence of documentation of the following items: Ethical, legal aspects of care	Process indicator	All settings	Changed
86	The palliative care clinical record contains evidence of documentation of the following items: Multidimensional treatment plan	Process indicator	All settings	Changed
87	The palliative care clinical record contains evidence of documentation of the following items: Follow up assessment	Process indicator	All settings	Changed
B. Timely documentation				
Inpatient setting (Hospital, Palliative care unit, Hospice, Nursing home)				
88	Within 24 hours of admission there is documentation of the initial assessment of: Prognosis, Functional status, Pain and other symptoms, Psychosocial symptoms, The patient's capacity to make decisions	Process indicator	Inpatient setting indicator	Changed
89	There is documentation that patients reporting pain or other symptoms at the time of admission, had their pain or other symptoms relieved or reduced to a level of their satisfaction within 48 hours of admission	Process indicator	Inpatient setting indicator	Changed
90	There is documentation about the discussion of patient preferences within 48 hours of admission	Process indicator	Inpatient setting indicator	Changed

Table 1 Quality indicator set (Continued)

91	A discharge/transfer summary is available in the medical record within 48 hours after discharge/transfer	Process indicator	Inpatient setting indicator	Changed
	All settings			
92	There is documentation of pain assessment at 4 hour intervals	Process indicator	All settings	Changed
93	The discussion of patient's preferences is reviewed on a regular basis (in parallel with disease progression) or on request of the patient	Process indicator	All settings	Changed
94	There is documentation that within 24 hours after patient transfer, the responsible physician in the receiving setting has visited the patient	Process indicator	All settings	Changed
95	There is documentation that within 24 hours after patient transfer, the new palliative care team in the receiving setting has visited the patient	Process indicator	All settings	Changed
	Quality and safety issues			
	A. Quality policies			
96	The palliative care service has a quality improvement program	Process indicator	All settings	Changed
97	There is documentation whether targets set for quality improvement have been met	Process indicator	All settings	Changed
98	Clinical audit are part of the quality improvement program	Process indicator	All settings	Changed
99	The setting uses a program about early initiation of palliative care (e.g. the Gold Standards Framework)	Process indicator	All settings	Changed
	B. Adverse events			
100	There is a register for adverse events	Process indicator	All settings	Changed
101	There is a documented procedure to analyse and follow up adverse events	Process indicator	All settings	Changed
	C. Complaints procedure			
102	There is a patient complaints procedure	Process indicator	All settings	Changed
	Reporting clinical activity of palliative care services			
103	The palliative care service uses a database for recording clinical activity	Process indicator	All settings	Changed
104	The following is part of the database: Diagnosis, Date of diagnosis, Date of referral, Date of admission to the palliative care service, Date of death, Place of death, Preferred place of death	Process indicator	All settings	Changed
105	From the database the service is able to derive: Time from diagnosis to referral to palliative care, Time from referral to initiation of palliative care, Time from initiation of palliative care to death, Frequency of unplanned consultations with the out-of-hours service for palliative care patients who are at home, Frequency of unplanned hospital admissions of palliative care patients, Percentage of non-oncological patients receiving palliative care	Process indicator	All settings	New developed
106	Based on the database, an annual report is made about the service	Process indicator	All settings	Changed
	Research			
107	There is evidence that the palliative care service is involved in research in palliative care (e.g. authorship of publications, research grants)	Process indicator	All settings	Changed
	Education			
108	All health and social care students have standardised learning objectives for basic training in palliative care	Process indicator	All settings	Changed
109	All health and social care professionals have standardised learning objectives for continuing basic training in palliative care	Process indicator	All settings	New developed
110	There is a program for specialised training in palliative care for professionals working in a service that provides specialised palliative care	Process indicator	All settings	New developed

3. Based on this meeting, adaptations were made and a new draft QI set was presented in the second steering group meeting in October.

Results

Search flow

The literature search resulted in 541 papers, including a previous systematic review on quality indicators for palliative care [8]. Most of the papers came from the database search (n=527), followed by the hand search (n= 29) and least of grey literature search (n=14).

In the screening process 16 duplicates were identified, and titles and abstracts of 511 papers were searched. Of these, 389 documents were excluded, as they did not contain QIs. Full papers were obtained of 122 publications, from which 63 papers were included; 57 resulting from the database search [12-68] and another six papers from the additional hand searches (Figure 1) [69-74].

Results grey literature search

The grey literature search yielded seven papers, deriving from Belgium, the Netherlands and the UK [9,75-80]. These sources included government sites, national health organisations and national institutes (Figure 1).

This additional search resulted in the development of 53 QIs, divided over almost all domains (see Additional file 1).

QI development

Sixhundred-thirtyfive QIs were derived from this literature review. After screening of duplicates, selecting process and structure QIs and combining QIs covering the same topic, the remaining 151 QIs were organised in the framework and discussed in the first steering group meeting. The two steering group meetings resulted in a reduction from 151 to 110 QIs (Additional file 1: Appendix C) (Figure 2). For instance the domain about finance QIs was excluded for the final set as the QIs were more useful on national level than in the setting specific palliative care institutions.

The rest of the QIs were distributed over the framework (Table 1) [10].

The majority of the 110 QIs were process QIs (n=76), the other structure QIs (n=34). Some of the QIs (n=24) were only applicable in specific settings; ten in primary care, thirteen in inpatient settings and one in home care. The others were meant for all settings that deliver palliative care.

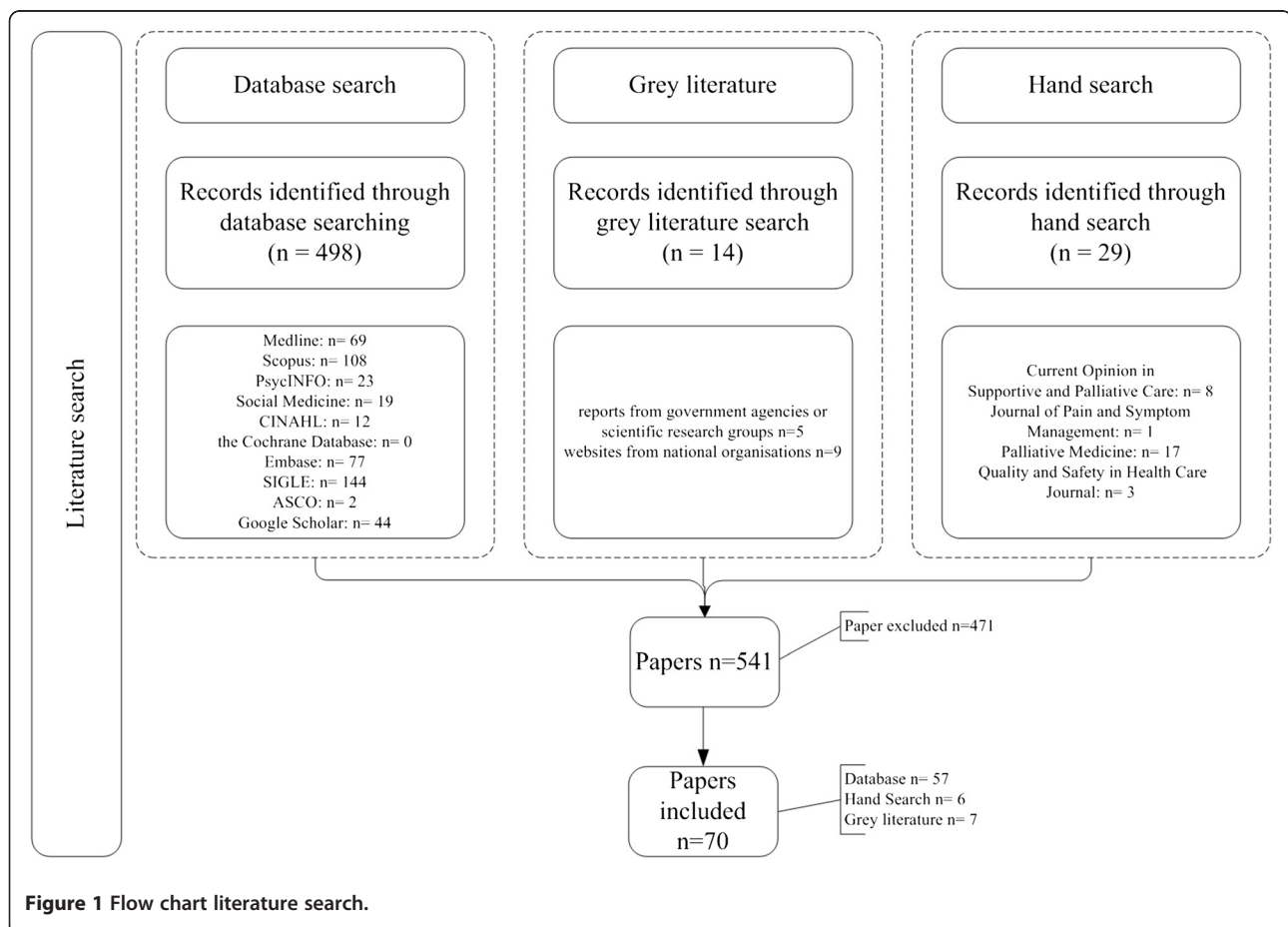
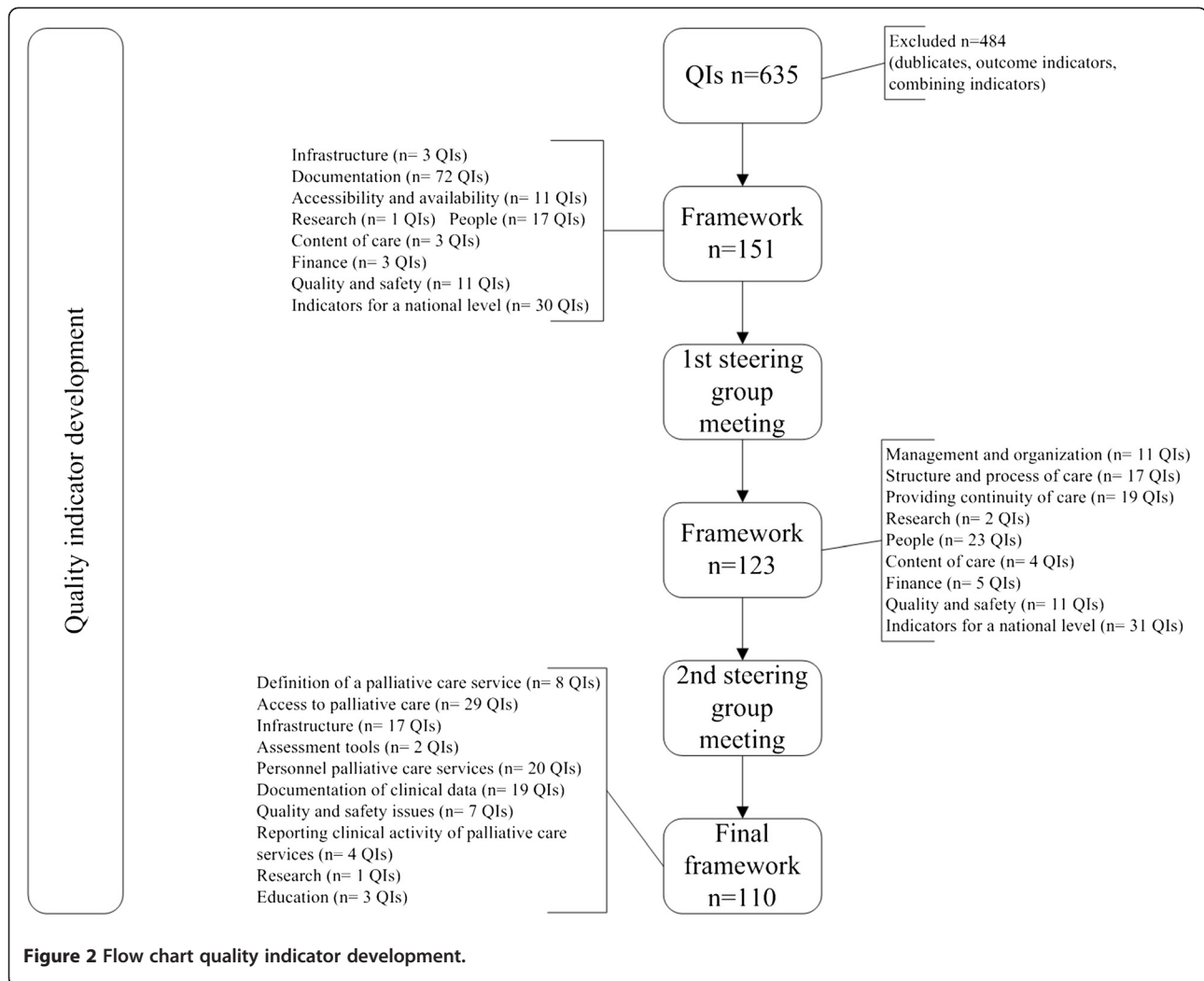


Figure 1 Flow chart literature search.



Twenty-four QIs were developed based on organisational aspects found in literature (Table 1, QI 51). Finally, several QIs (n= 86), were changed in their presentation of text during the procedure. For example, originally developed QIs for other settings like the intensive care unit, were adapted to make them appropriate for palliative care settings.

Discussion

We were able to develop an international framework with 110 QIs to assess the organisation of palliative care in several kind of settings. To our knowledge, this study presents the first systematically developed international set of QIs on this topic. Part of the QIs are setting specific, whereas others will be applicable in all kind of settings that deliver palliative care.

Where Pasman et al. performed a systematic review on all kind of QIs for palliative care, and Pastrana et al. focused on outcome indicators for Germany, we focused on process and structure QIs [8,81]. By using an

international perspective and by not limiting the study to symptom control, our study follows the recommendations of Ostgathe et al. [82]. Our set also contains two QIs that are linked to the World Health Assembly's proposed global health indicator 'Access to palliative care assessed by morphine-equivalent consumption of strong opioid analgesia (excluding methadone) per death by cancer', but without the restriction to patients with cancer [83].

Strength and limitations

We chose an approach with several consecutive methodological steps to develop a set of QIs. Of those aspects that were considered important for the organisation of palliative care but of which no QIs could be found, we developed QIs ourselves [84]. Of those QIs that were developed for a restricted group of patients or setting (e.g. ICU or vulnerable elderly) we checked whether we could rephrase them into QIs for more types of settings or palliative patients. Defining QIs in a consensus procedure is a good

option if scientific literature is not yet available [7], particularly because it combines several methods to improve validity. Using a group approach has the advantage that participants can share their expertise and experience. Groups often make better decisions than individuals [85].

The naming of QIs as process or structure indicators can be discussed. Yet, this only influences the categorisation and not the content, importance or use of a QI.

Another strong aspect of our procedure is the inclusion of grey literature, which created the possibility to include documents from important although not scientific sources [86].

As the Europall project was a collaboration of seven European countries, only experts of these countries were represented in the steering group meetings. Other European countries, with different health care and financing systems, cultures and palliative care, were not involved at this stage.

This first step resulted in a set of structure and process QIs, that can help professionals or settings to measure the quality of care of their setting. In a next step, a subset will be developed of which each QI is applicable in the seven participating countries.

Based on a modified RAND Delphi method the following set will be interesting for international comparison. The advantage of this comprehensive set enables each country and each setting the opportunity to see all QIs that are available on this topic.

The last step will describe a pilot study to test the set of QIs on face-validity, applicability and discriminative power. This includes almost all (26) European countries. These studies will be published separately.

Further research

The final set can be used to provide feedback to settings or countries to reflect on their performance, for supporting quality improvement activities, accreditation, research, and enhancing transparency about quality. They can be used to evaluate the implementation of the WHO definition and the recommendations of the council of Europe [1,4].

From 2011 to 2015, a follow-up project to Europall called IMPACT (funded by the EU 7th framework) will develop and test strategies to implement these QIs.

Conclusions

This review resulted in the first comprehensive framework of QIs for the organisation of palliative care.

Additional file

Additional file 1: Supplementary online content. Development of a set of process and structure indicators for palliative care: the Europall

project. Appendix A- Search strategies for databases. Appendix B- Project partners. Appendix C- Indicators set for the organisation of palliative care.

Competing interest

This work was partly funded by EAHC (Executive Agency for Health and Consumers, grant: 2006111 PPP 'Best practices in palliative care'). The funders had no role in study design, data collection and analysis, decision to publish, or preparation of the manuscript. The authors have no financial disclosures.

Authors' contributions

KvB participated in the literature search, design of the study and drafted the manuscript. NA participated in the literature search, design of the study and drafted the manuscript. JH participated in the literature search, design of the study and drafted the manuscript. JMM was actively involved in the selection and developmental process of the QI. She attended the expert meeting. IC was actively involved in the selection and developmental process of the QI. She attended the expert meeting. LR and helped to draft the manuscript and had an advisory role. KV conceived of the study and participated in its design and coordination and helped to draft the manuscript. YE conceived of the study and participated in its design and coordination and helped to draft the manuscript. All authors read and approved the final manuscript.

Acknowledgements

The authors are grateful to the EAHC (Executive Agency for Health and Consumers) for funding the Europall project. We would like to thank Hristina Mileva from EAHC specifically for her help and support. Further our thanks also go to the many individuals and organisations in the seven countries that contributed information to the project. We are especially grateful to all those who shared their views with us.

Belgium: Johan Menten

England: Sam Ahmedzai, Bill Noble

France: Jean-Christophe Mino

Germany: Eberhard Klaschik, Birgit Jaspers

Poland: Wojciech Leppert, Sylwia Dziegielewska

Spain: Xavier Gomez Batiste Alentorn, Silvia Paz, Marisa Martinez Munoz

Author details

¹Department of Anaesthesiology, Pain and Palliative Medicine, Radboud University Nijmegen Medical Centre, Geert Grote Plein 10, Nijmegen 6500 HB, The Netherlands. ²Department of Radiotherapy-Oncology and Palliative Medicine, University Hospital Leuven, Leuven, Belgium. ³Academic Unit of Supportive Care, School of Medicine and Biomedical Sciences, The University of Sheffield, Sykes House, Little Common Lane, Sheffield S11 9NE, UK. ⁴Department of Science and Research in Palliative Medicine, University of Bonn, Malteser Hospital Bonn/Rhein-Sieg, Bonn, Germany. ⁵Réseau de Santé, Paris Sud, France. ⁶Université Paris Descartes, Sorbonne Paris Cité, Public Health, Paris F-75006, France. ⁷AP-HP, Cochin Teaching Hospital, Palliative Medicine, Paris F-75014, France.

Received: 20 October 2011 Accepted: 31 October 2012

Published: 2 November 2012

References

1. WHO: *Definition of Palliative Care*. <http://www.who.int/cancer/palliative/definition/en/>.
2. *10 facts on ageing and the life course*. <http://www.who.int/features/factfiles/ageing/en/index.html>.
3. *What are the public health implications of global ageing?* <http://www.who.int/features/qa/42/en/index.html>.
4. *Recommendation Rec (2003) 24 of the Committee of Ministers to member states on the organisation of palliative care*. [http://www.coe.int/t/dg3/health/Source/Rec\(2003\)24_en.pdf](http://www.coe.int/t/dg3/health/Source/Rec(2003)24_en.pdf).
5. Smith TJ, Hillner BE: *Ensuring quality cancer care by the use of clinical practice guidelines and critical pathways*. *J Clin Oncol* 2001, **19**:2886-2897.
6. Campbell SM, Ludt S, Van Lieshout J, Boffin N, Wensing M, Petek D, Grol R, Roland MO: *Quality indicators for the prevention and management of cardiovascular disease in primary care in nine European countries*. *Eur J Cardiovasc Prev Rehabil* 2008, **15**:509-515.

7. Campbell SM, Braspenning J, Hutchinson A, Marshall MN: **Research methods used in developing and applying quality indicators in primary care.** *BMJ* 2003, **326**:816–819.
8. Pasman HRW, Brandt HE, Deliens L, Francke AL: **Quality indicators for palliative care: a systematic review.** *J Pain Symptom Manage* 2009, **38**:145–156.
9. *Europall Project.* <http://www.europall.eu/>.
10. Engels Y, Campbell S, Dautzenberg M, van den Hombergh P, Brinkmann H, Szecsenyi J, Falcoff H, Seuntjens L, Kuenzi B, Grol R: **Developing a framework of, and quality indicators for, general practice management in Europe.** *Fam Pract* 2005, **22**:215–222.
11. Cook AM, Finlay IG, Edwards AG, Hood K, Higginson IJ, Goodwin DM, Normand CE, Douglas HR: **Efficiency of searching the grey literature in palliative care.** *Journal of Pain and Symptom Management* 2001, **22**:797–801.
12. Aa Petersen M, Pedersen L, Groenvold M: **Does the agreement of patient and physician assessments of health related quality of life in palliative care depend on patient characteristics?** *Palliat Med* 2007, **21**:289–294.
13. ASCO-ESMO: **Consensus statement on quality cancer care.** *J Clin Oncol* 2010, **24**:3498–3499.
14. Becker G, Sarhatlic R, Olschewski M, Xander C, Momm F, Blum HE: **End-of-life care in hospital: current practice and potentials for improvement.** *J Pain Symptom Manage* 2007, **33**:711–719.
15. Bottomley A: **The journey of health-related quality of life assessment.** *Lancet Oncol* 2008, **9**:906.
16. Brumley R, Enguidanos S, Jamison P, Seitz R, Morgenstern N, Saito S, McIlwaine J, Hillary K, Gonzalez J: **Increased satisfaction with care and lower costs: results of a randomized trial of in-home palliative care.** *J Am Geriatr Soc* 2007, **55**:993–1000.
17. Casarett D, Pickard A, Bailey FA, Ritchie C, Furman C, Rosenfeld K, Shreve S, Chen Z, Shea JA: **Do palliative consultations improve patient outcomes?** *J Am Geriatr Soc* 2008, **56**:593–599.
18. Delgado-Guay MO, Parsons HA, Li Z, Palmer LJ, Bruera E: **Symptom distress, interventions, and outcomes of intensive care unit cancer patients referred to a palliative care consult team.** *Cancer* 2009, **115**:437–445.
19. Demiris G, Oliver DP, Wittenberg-Lyles E: **Assessing caregivers for team interventions (ACT): a new paradigm for comprehensive hospice quality care.** *Am J Hosp Palliat Care* 2009, **26**:128–134.
20. Dixon BK: **Quality measures crafted for palliative.** *Hospice Medicine. Family Practice News* 2007, **37**:6.
21. Dougherty E, Pierce B, Ma C, Panzarella T, Rodin G, Zimmermann C: **Factors associated with work stress and professional satisfaction in oncology staff.** *Am J Hosp Palliat Care* 2009, **26**:105–111.
22. Dy SM, Shugarman LR, Lorenz KA, Mularski RA, Lynn J, for the RAND—Southern California Evidence-Based Practice Center: **A systematic review of satisfaction with care at the end of life.** *J Am Geriatr Soc* 2008, **56**:124–129.
23. Gelfman LP, Meier DE, Morrison RS: **Does palliative care improve quality? A survey of bereaved family members.** *J Pain Symptom Manage* 2008, **36**:22–28.
24. Gomez-Batiste X, Fontanals MD, Roca J, Borrás JM, Viladiu P, Stjernsward J, Rius E: **Catalonia WHO demonstration project on palliative care implementation 1990–1995: results in 1995.** *J Pain Symptom Manage* 1996, **12**:73–78.
25. Granda-Cameron C, Viola SR, Lynch MP, Polomano RC: **Measuring patient-oriented outcomes in palliative care: functionality and quality of life.** *Clin J Oncol Nurs* 2008, **12**:65–77.
26. Gries CJ, Curtis JR, Wall RJ, Engelberg RA: **Family member satisfaction with end-of-life decision making in the ICU.** *Chest* 2008, **133**:704–712.
27. Griffin JP, Koch KA, Nelson JE, Cooley ME: **Palliative care consultation, quality-of-life measurements, and bereavement for end-of-life care in patients with lung cancer: ACCP evidence-based clinical practice guidelines (2nd edition).** *Chest* 2007, **132**:404S–422S.
28. Grunfeld E, Lethbridge L, Dewar R, Lawson B, Paszat LF, Johnston G, Burge F, McIntyre P, Earle CC: **Towards using administrative databases to measure population-based indicators of quality of end-of-life care: testing the methodology.** *Palliat Med* 2006, **20**:769–777.
29. Hanratty B, Holland P, Jacoby A, Whitehead M: **Financial stress and strain associated with terminal cancer—a review of the evidence.** *Palliat Med* 2007, **21**:595–607.
30. Hicks F, Rees E: **A 'pain-free' death.** *Br Med Bull* 2008, **88**:23–41.
31. Irwin SA, Zurhellen CH, Diamond LC, Dunn LB, Palmer BW, Jeste DV, Twamley EW: **Unrecognised cognitive impairment in hospice patients: a pilot study.** *Palliat Med* 2008, **22**:842–847.
32. Jarabek BR, Jama AA, Cha SS, Ruegg SR, Moynihan TJ, McDonald FS: **Use of a palliative care order set to improve resident comfort with symptom management in palliative care.** *Palliat Med* 2008, **22**:343–349.
33. Jordhoy MS, Inger Ringdal G, Helbostad JL, Oldervoll L, Loge JH, Kaasa S: **Assessing physical functioning: a systematic review of quality of life measures developed for use in palliative care.** *Palliat Med* 2007, **21**:673–682.
34. Jünger S, Pestinger M, Elsner F, Krumm N, Radbruch L: **Criteria for successful multiprofessional cooperation in palliative care teams.** *Palliat Med* 2007, **21**:347–354.
35. Kairuz TE, Gargiulo D, Bunt C, Garg S: **Quality, safety and efficacy in the 'off-label' use of medicines.** *Curr Drug Saf* 2007, **2**:89–95.
36. Kapo J, Morrison LJ, Liao S: **Palliative care for the older adult.** *J Palliat Med* 2007, **10**:185–209.
37. Kim Y, Given BA: **Quality of life of family caregivers of cancer survivors: across the trajectory of the illness.** *Cancer* 2008, **112**:2556–2568.
38. Le BHC, Ashby MA: **Audit of deaths and palliative care referrals in a large Australian teaching hospital.** *J Palliat Med* 2007, **10**:835–836.
39. Leonard M, Agar M, Mason C, Lawlor P: **Delirium issues in palliative care settings.** *J Psychosom Res* 2008, **65**:289–298.
40. Lorenz K: **Progress in measuring and improving palliative and end-of-life quality.** *J Palliat Med* 2008, **11**:682–684.
41. Mayadev AS, Weiss MD, Distad BJ, Krivickas LS, Carter GT: **The amyotrophic lateral sclerosis center: a model of multidisciplinary management.** *Phys Med Rehabil Clin N Am* 2008, **19**:619–631.
42. McNiff KK, Neuss MN, Jacobson JO, Eisenberg PD, Kadlubek P, Simone JV: **Measuring supportive care in medical oncology practice: lessons learned from the quality oncology practice initiative.** *J Clin Oncol* 2008, **26**:3832–3837.
43. Meraviglia M, Sutter R, Gaskamp CD: **Providing spiritual care to terminally ill older adults.** *J Gerontol Nurs* 2008, **34**:8–14.
44. Miller SC, Kiely DK, Teno JM, Connor SR, Mitchell SL: **Hospice care for patients with dementia: does volume make a difference?** *J Pain Symptom Manage* 2008, **35**:283–291.
45. Miyashita M, Nakamura A, Morita T, Bito S: **Identification of quality indicators of end-of-life cancer care from medical chart review using a modified Delphi method in Japan.** *Am J Hosp Palliat Care* 2008, **25**:33–38.
46. Norton SA, Hogan LA, Holloway RG, Temkin-Greener H, Buckley MJ, Quill TE: **Proactive palliative care in the medical intensive care unit: effects on length of stay for selected high-risk patients.** *Crit Care Med* 2007, **35**:1530–1535.
47. van der Ploeg E, Depla MFIA, Shekelle P, Rigter H, Mackenbach JP: **Developing quality indicators for general practice care for vulnerable elders; transfer from US to The Netherlands.** *Qual Saf Health Care* 2008, **17**:291–295.
48. Pronost A, Le Gouge ALD: **The effects of various features of haematology-oncology services using the palliative approach and the socio-demographic characteristics of healthcare providers on health indicators: social support, perceived stress, coping strategies, quality of life at work.** *Oncology* 2008, **10**:125–134.
49. Quill TE: **Is length of stay on hospice a critical quality of care indicator?** *J Palliat Med* 2007, **10**:290–292.
50. Ripamonti CI: **Malignant bowel obstruction: tailoring treatment to individual patients.** *J Support Oncol* 2008, **6**:114–115.
51. Robinson C, Pesut B, Bottorff J, Mowry A, Broughton S, Fyles G: **Rural palliative care: a comprehensive review.** *J Palliat Med* 2009, **12**:253–258.
52. Rokoske FS, Schenck AHL: **Developing Quality Measures for Hospice and Palliative Care.** *Gerontologist* 2008, **48**:691.
53. Sampson EL, Thune-Boyle I, Kukkastenvehmas R, Jones L, Tookman A, King M, Blanchard MR: **Palliative care in advanced dementia: A mixed methods approach for the development of a complex intervention.** *BMC Palliat Care* 2008, **7**:8.
54. Sato K, Miyashita M, Morita T, Sanjo M, Shima Y, Uchitomi Y: **Reliability assessment and findings of a newly developed quality measurement instrument: quality indicators of end-of-life cancer care from medical chart review at a Japanese regional cancer center.** *J Palliat Med* 2008, **11**:729–737.
55. Sela RA: **Screening for depression in palliative cancer patients attending a pain and symptom control clinic.** *Palliat Support Care* 2007, **5**:207–217.
56. Slaven M, Wylie N, Fitzgerald B, Henderson N, Taylor S: **Who needs a palliative care consult?: the Hamilton Chart Audit tool.** *J Palliat Med* 2007, **10**:304–307.

57. Smith AK, McCarthy EP, Paulk E, Balboni TA, Maciejewski PK, Block SD, Prigerson HG: **Racial and ethnic differences in advance care planning among patients with cancer: impact of terminal illness acknowledgment, religiousness, and treatment preferences.** *J Clin Oncol* 2008, **26**:4131–4137.
58. van der Steen JT, Mitchell SL, Frijters DHM, Kruse RL, Ribbe MW: **Prediction of 6-month mortality in nursing home residents with advanced dementia: validity of a risk score.** *J Am Med Dir Assoc* 2007, **8**:464–468.
59. Tei Y, Morita T, Nakaho T, Takigawa C, Higuchi A, Suga A, Tajima T, Ikenaga M, Higuchi H, Shimoyama N, Fujimoto M: **Treatment efficacy of neural blockade in specialized palliative care services in Japan: a multicenter audit survey.** *J Pain Symptom Manage* 2008, **36**:461–467.
60. Teno JM, Connor SR: **Referring a patient and family to high-quality palliative care at the close of "life": "We met a new personality... with this level of compassion and empathy".** *JAMA* 2009, **301**:651–659.
61. Teunissen SCCM, Verhagen EH, Brink M, van der Linden BA, Voest EE, de Graeff A: **Telephone consultation in palliative care for cancer patients: 5 years of experience in The Netherlands.** *Support Care Cancer* 2007, **15**:577–582.
62. Torres-Vigil I, Aday LA: **Health care providers' assessments of the quality of advanced-cancer care in Latin American medical institutions: a comparison of predictors in five countries: Argentina, Brazil, Cuba, Mexico, and Peru.** *J Pain Palliat Care Pharmacother* 2008, **22**:7–20.
63. Tsai LY, Li IF, Liu CP, Su WH, Change TY: **Application of quality audit tools to evaluate care quality received by terminal cancer patients admitted to a palliative care unit.** *Support Care Cancer* 2008, **16**:1067–1074.
64. Tuffrey-Wijn I, Hogg JCL: **End-of-life and palliative care for people with intellectual disabilities who have cancer or other life-limiting illness: a review of the literature and available resources.** *J Appl Res Intellect Disabil* 2007, **20**:331–344.
65. Walling A, Lorenz KA, Dy SM, Naeim A, Sanati H, Asch SM, Wenger NS: **Evidence-based recommendations for information and care planning in cancer care.** *J Clin Oncol* 2008, **26**:3896–3902.
66. Wenig LC, Huang HL, Wilkie DJ, Hoenig NA, Suarez ML, Marschke M, Durham J: **Predicting survival with the palliative performance scale in a minority-serving hospice and palliative care program.** *J Pain Symptom Manage* 2009, **37**:642–648.
67. Yao CA, Hu WY, Lai YF, Cheng SY, Chen CY, Chiu TY: **Does dying at home influence the good death of terminal cancer patients?** *J Pain Symptom Manage* 2007, **34**:497–504.
68. Zib M, Saul P: **A pilot audit of the process of end-of-life decision-making in the intensive care unit.** *Crit Care Resusc* 2007, **9**:213–218.
69. Costantini M: **Editorial: place of death. It is time for a change of gear.** *Palliat Med* 2008, **22**:785–786.
70. Dudgeon DJ, Knott C, Eichholz M, Gerlach JL, Chapman C, Viola R, Van Dijk J, Preston S, Batchelor D, Bartfay E: **Palliative Care Integration Project (PCIP) quality improvement strategy evaluation.** *J Pain Symptom Manage* 2008, **35**:573–582.
71. Glasgow JL, McLennan SR, High KJ, Celi LAG: **Quality of dying in a New Zealand teaching hospital.** *Qual Saf Health Care* 2008, **17**:244–248.
72. Luthy C, Cedraschi C, Pautex S, Rentsch D, Piguat V, Allaz AF: **Difficulties of residents in training in end-of-life care. A qualitative study.** *Palliat Med* 2009, **23**:59–65.
73. Rayner L, Loge JH, Wasteson E, Higginson IJ: **The detection of depression in palliative care.** *Curr Opin Support Palliat Care* 2009, **3**:55–60.
74. Zaider T, Kissane D: **The assessment and management of family distress during palliative care.** *Curr Opin Support Palliat Care* 2009, **3**:67–71.
75. **Externe indicatoren voor pijn bij kanker.** <http://www.zichtbarezorg.nl/mailings/FILES/htmlcontent/Ziekenhuizen/New%20e%20tranche/Pijn%20bij%20kanker%20defnew%20incl%20wijzigingen%20nav%20autorisatie.pdf>.
76. **Klinische kwaliteitsindicatoren. Objective Elements - Communication (OEC).** Brussel: Federaal Kenniscentrum voor de gezondheidszorg (KCE). https://kce.fgov.be/sites/default/files/page_documents/d20061027343.pdf.
77. **Improving Supportive and Palliative Care for Adults National Institute for Clinical Excellence with Cancer.** <http://www.nice.org.uk/nicemedia/live/10893/28816/28816.pdf>.
78. **Plan van Aanpak Palliatieve Zorg 2008–2010.** <http://www.palliatief.nl/LinkClick.aspx?fileticket=yX68iRdBUjw%3d&tabid=3997&mid=10542>.
79. **Quality and outcomes framework.** <http://www.paymodernisation.scot.nhs.uk/gms/quality/docs/QualOutFrame0804.pdf>.
80. **Studie inzake de ontwikkeling van een registratie-instrument voor palliatieve zorg.** http://www.palliatief.be/accounts/143/attachments/Research/studie_registratie-instrument_pz_def.versie.pdf.
81. Pastrana T, Radbruch L, Nauck F, Hover G, Fegg M, Pestinger M, Ross J, Krumm N, Ostgathe C: **Outcome indicators in palliative care—how to assess quality and success. Focus group and nominal group technique in Germany.** *Support Care Cancer* 2010, **18**:859–868.
82. Ostgathe C, Voltz R: **Quality indicators in end-of-life care.** *Curr Opin Support Palliat Care* 2010, **4**:170–173.
83. Payne S, Leget C, Peruselli C, Radbruch L: **Quality indicators for palliative care: debates and dilemmas.** *Palliat Med* 2012, **26**:679–680.
84. Claessen S, Francke A, Belarbi H, Pasman H, van der Putten M, Deliens L: **A new set of quality indicators for palliative care: process and results of the development trajectory.** *J Pain Symptom Manage* 2011, **42**:169–182.
85. Mrowietz U, Kragballe K, Reich K, Spuls P, Griffiths C, Nast A, Franke J, Antoniou C, Arenberger P, Balieva F, Bylaite M, Correia O, Dauden E, Gisondi P, Iversen L, Kemeny L, Lahfa M, Nijsten T, Rantanen T, Reich A, Rosenbach T, Segaeert S, Smith C, Talmé T, Volc-Platzer B, Yawalkar N: **Definition of treatment goals for moderate to severe psoriasis: a European consensus.** *Arch Dermatol Res* 2010, **303**:1–10.
86. Genet N, Boerma WG, Kringos DS, Bouman A, Francke AL, Fagerstrom C, Melchiorre MG, Greco C, Deville W: **Home care in Europe: a systematic literature review.** *BMC Health Service Research* 2011, **11**:207.

doi:10.1186/1472-6963-12-381

Cite this article as: Woitha et al.: Development of a set of process and structure indicators for palliative care: the Europall project. *BMC Health Services Research* 2012 **12**:381.

Submit your next manuscript to BioMed Central and take full advantage of:

- Convenient online submission
- Thorough peer review
- No space constraints or color figure charges
- Immediate publication on acceptance
- Inclusion in PubMed, CAS, Scopus and Google Scholar
- Research which is freely available for redistribution

Submit your manuscript at
www.biomedcentral.com/submit

