

PDF hosted at the Radboud Repository of the Radboud University Nijmegen

The following full text is a publisher's version.

For additional information about this publication click this link.

<http://hdl.handle.net/2066/129802>

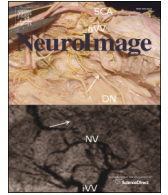
Please be advised that this information was generated on 2018-01-23 and may be subject to change.



Contents lists available at [ScienceDirect](#)

NeuroImage

journal homepage: www.elsevier.com/locate/ynimg



Corrigendum

Corrigendum to “Two-dimensional spatial tuning for saccades in human parieto-frontal cortex” [Neuroimage 87 (2014) 476–489]



Frank T.M. Leoné*, Ivan Toni, W. Pieter Medendorp

Radboud University Nijmegen, Donders Institute for Brain, Cognition and Behavior, 6525 HR Nijmegen, The Netherlands

The authors regret that errors were made in some of the figure citations in the article. On page 481, third paragraph, the second sentence should refer to Fig. 3. Also on page 483, third paragraph, the first sentence should refer to Figs. 3 and 9. The authors apologize for any inconvenience this may have caused the reader.

DOI of original article: <http://dx.doi.org/10.1016/j.neuroimage.2013.09.067>.

* Corresponding author.

E-mail address: f.leone@donders.ru.nl (F.T.M. Leoné).